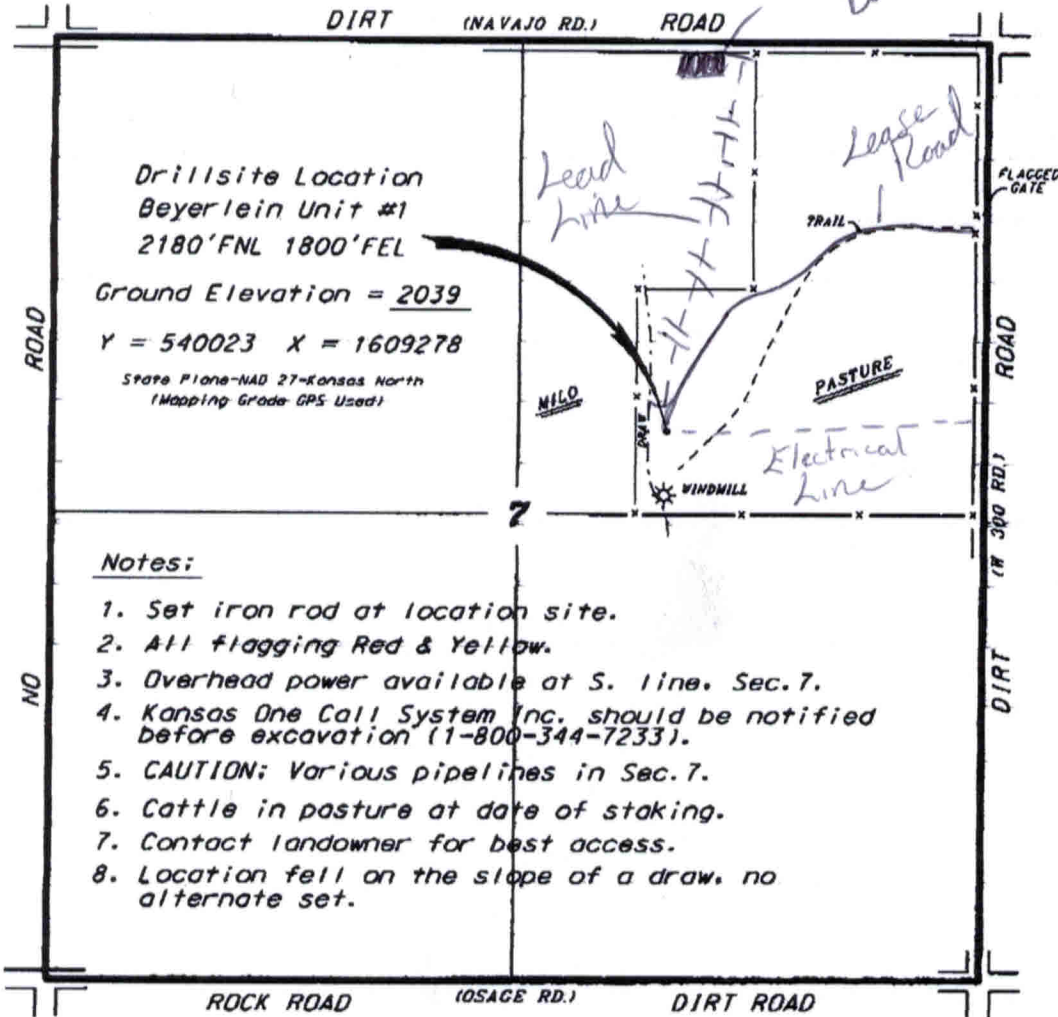


BACH OIL PRODUCTION, INC.
 BEYERLEIN LEASE
 NE-1/4, SECTION 7, T35, R18W
 PHILLIPS COUNTY, KANSAS

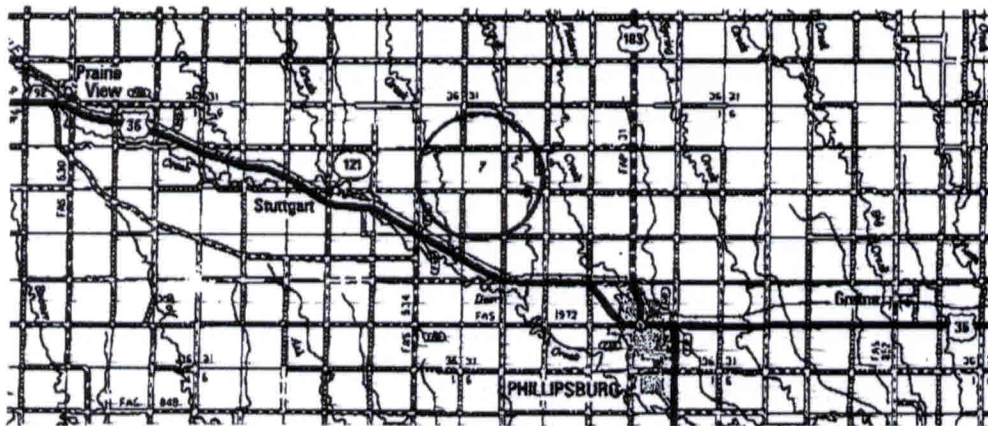
Tank Battery



Notes:

1. Set iron rod at location site.
2. All flagging Red & Yellow.
3. Overhead power available at S. line. Sec. 7.
4. Kansas One Call System Inc. should be notified before excavation (1-800-344-7233).
5. CAUTION; Various pipelines in Sec. 7.
6. Cattle in pasture at date of staking.
7. Contact landowner for best access.
8. Location fell on the slope of a draw, no alternate set.

Ingress and egress to location as shown on this plat is per usage only and may not be legally opened for public use. Contact landowner, tenant and county road department for access.



Controlling data is based upon the best maps and photographs available to us and upon a regular section of land containing 640 acres.

Approximate section lines were determined using the normal standard of care of oilfield surveyors practicing in the state of Kansas. The section corners, which establish the precise section lines, were not necessarily located, and the exact location of the drillsite location in the section is not guaranteed. Therefore, the operator securing this service and accepting this plat and all other services relying thereon agree to hold Central Kansas Oilfield Services, Inc., its officers and employees harmless from all claims, costs and expenses and hold entities released from any liability from incidental or consequential damage.

Elevations derived from National Geodetic Vertical datum.

Date October 16, 2012

CENTRAL KANSAS OILFIELD SERVICES, INC. (620)792-1977