



DRILL STEM TEST REPORT

Prepared For: **Carrie Exploration & Development**

210 w 22nd Hays Ks 67601

ATTN:

Matzek #4

25-19-11w Barton

Start Date: 2012.07.05 @ 18:03:00

End Date: 2012.07.05 @ 23:17:00

Job Ticket #: 17356 DST #: 2

Superior Testers Enterprises LLC
PO Box 138 Great Bend KS 67530
1-800-792-6902

Printed: 2012.07.05 @ 23:42:15

Carrie Exploration & Development 25-19-11w Barton Matzek #4 DST # 2 Lansing" D E F " 2012.07.05



DRILL STEM TEST REPORT

Carrie Exploration & Development

25-19-11w Barton

210 w 22nd Hays Ks 67601

Matzek #4

Job Ticket: 17356

DST#: 2

ATTN:

Test Start: 2012.07.05 @ 18:03:00

GENERAL INFORMATION:

Formation: **Lansing" DEF "**

Deviated: No Whipstock: ft (KB)

Time Tool Opened: 19:33:30

Time Test Ended: 23:17:00

Test Type: Conventional Bottom Hole (Initial)

Tester: Jared Scheck

Unit No: 3320-Great Bend -40

Interval: **3040.00 ft (KB) To 3089.00 ft (KB) (TVD)**

Reference Elevations: 1773.00 ft (KB)

Total Depth: 3089.00 ft (KB) (TVD)

1763.00 ft (CF)

Hole Diameter: 7.88 inches Hole Condition: Fair

KB to GR/CF: 10.00 ft

Serial #: 6731

Press@RunDepth: 169.30 psia @ ft (KB)

Capacity: 5000.00 psia

Start Date: 2012.07.05 End Date: 2012.07.05

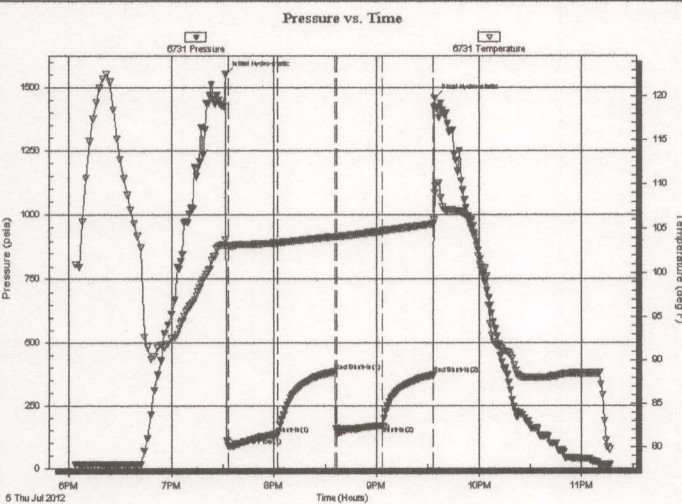
Last Calib.: 2012.07.05

Start Time: 18:04:00 End Time: 23:17:00

Time On Btm: 2012.07.05 @ 19:31:30

Time Off Btm: 2012.07.05 @ 21:34:00

TEST COMMENT: 1st Opening 30 Minutes-Strong blow built bottom of bucket in 1 minutes Gas to surface 25 minutes see gas report
 1st Shut-in 30 Minutes-Weak blow back
 2nd Opening 30 Minutes-Strong blow built bottom of bucket in 1 minute
 2nd Shut-in 30 Minutes Fair blow back 8 inches into bucket



PRESSURE SUMMARY

Time (Min.)	Pressure (psia)	Temp (deg F)	Annotation
0	1552.71	103.80	Initial Hydro-static
2	86.58	103.06	Open To Flow (1)
31	134.58	103.39	Shut-In(1)
64	382.98	104.12	End Shut-In(1)
66	145.59	104.09	Open To Flow (2)
92	169.30	104.71	Shut-In(2)
122	370.19	105.48	End Shut-In(2)
123	1458.30	108.96	Final Hydro-static

Recovery

Length (ft)	Description	Volume (bbl)
120.00	Gassy oil cut muddy w ater	1.68
0.00	20%gas 40%oil 10%mud 30%w ater	0.00
120.00	Gassy oil cut muddy w ater	1.68
0.00	15%gas 45%oil10%mud 30%w ater	0.00
60.00	muddy w ater 20%mud 80%w ater	0.84

Gas Rates

	Choke (inches)	Pressure (psia)	Gas Rate (Mcf/d)
First Gas Rate	0.13	4.00	1.50
Last Gas Rate	0.13	12.00	4.49
Max. Gas Rate	0.13	12.00	4.49



DRILL STEM TEST REPORT

Carrie Exploration & Development

25-19-11w Barton

210 w 22nd Hays Ks 67601

Matzek #4

Job Ticket: 17356

DST#: 2

ATTN:

Test Start: 2012.07.05 @ 18:03:00

GENERAL INFORMATION:

Formation: **Lansing" DEF "**

Deviated: No Whipstock: ft (KB)

Time Tool Opened: 19:33:30

Time Test Ended: 23:17:00

Test Type: Conventional Bottom Hole (Initial)

Tester: Jared Scheck

Unit No: 3320-Great Bend -40

Interval: **3040.00 ft (KB) To 3089.00 ft (KB) (TVD)**

Reference Elevations: 1773.00 ft (KB)

Total Depth: 3089.00 ft (KB) (TVD)

1763.00 ft (CF)

Hole Diameter: 7.88 inches Hole Condition: Fair

KB to GR/CF: 10.00 ft

Serial #: 8159

Press@RunDepth: 370.96 psia @ ft (KB)

Capacity: 5000.00 psia

Start Date: 2012.07.05 End Date: 2012.07.05

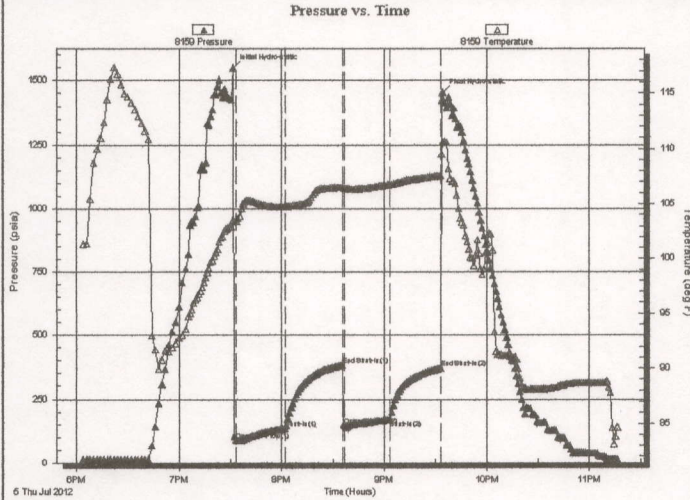
Last Calib.: 2012.07.05

Start Time: 18:04:00 End Time: 23:17:00

Time On Btm: 2012.07.05 @ 19:31:30

Time Off Btm: 2012.07.05 @ 21:34:00

TEST COMMENT: 1st Opening 30 Minutes-Strong blow built bottom of bucket in 1 minutes Gas to surface 25 minutes see gas report
 1st Shut-in 30 Minutes-Weak blow back
 2nd Opening 30 Minutes-Strong blow built bottom of bucket in 1 minute
 2nd Shut-in 30 Minutes Fair blow back 8 inches into bucket



PRESSURE SUMMARY

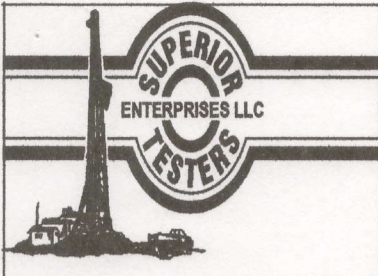
Time (Min.)	Pressure (psia)	Temp (deg F)	Annotation
0	1549.25	103.53	Initial Hydro-static
2	87.70	103.44	Open To Flow (1)
31	134.21	104.77	Shut-In(1)
64	383.14	106.50	End Shut-In(1)
66	143.75	106.44	Open To Flow (2)
92	169.50	106.76	Shut-In(2)
122	370.96	107.57	End Shut-In(2)
123	1453.50	110.58	Final Hydro-static

Recovery

Length (ft)	Description	Volume (bbl)
120.00	Gassy oil cut muddy w ater	1.68
0.00	20%gas 40%oil 10%mud 30%w ater	0.00
120.00	Gassy oil cut muddy w ater	1.68
0.00	15%gas 45%oil 10%mud 30%w ater	0.00
60.00	muddy w ater 20%mud 80%w ater	0.84

Gas Rates

	Choke (inches)	Pressure (psia)	Gas Rate (Mcf/d)
First Gas Rate	0.13	4.00	1.50
Last Gas Rate	0.13	12.00	4.49
Max. Gas Rate	0.13	12.00	4.49



DRILL STEM TEST REPORT

TOOL DIAGRAM

Carrie Exploration & Development

25-19-11w Barton

210 w 22nd Hays Ks 67601

Matzek #4

Job Ticket: 17356

DST#: 2

ATTN:

Test Start: 2012.07.05 @ 18:03:00

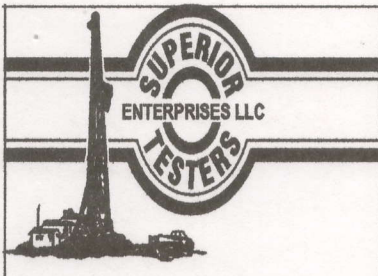
Tool Information

Drill Pipe:	Length: 3028.00 ft	Diameter: 3.80 inches	Volume: 42.47 bbl	Tool Weight: 1000.00 lb
Heavy Wt. Pipe:	Length: 0.00 ft	Diameter: 0.00 inches	Volume: 0.00 bbl	Weight set on Packer: 20000.00 lb
Drill Collar:	Length: 0.00 ft	Diameter: 0.00 inches	Volume: 0.00 bbl	Weight to Pull Loose: 40000.00 lb
			<u>Total Volume: 42.47 bbl</u>	Tool Chased 0.00 ft
Drill Pipe Above KB:	8.00 ft			String Weight: Initial 31000.00 lb
Depth to Top Packer:	3040.00 ft			Final 32000.00 lb
Depth to Bottom Packer:	ft			
Interval between Packers:	49.00 ft			
Tool Length:	69.00 ft			
Number of Packers:	2	Diameter: 6.75 inches		

Tool Comments:

Tool Description	Length (ft)	Serial No.	Position	Depth (ft)	Accum. Lengths
SHut-InTool	5.00		Inside	3025.00	
Hydraulic Tool	5.00			3030.00	
Packer	5.00			3035.00	20.00 Bottom Of Top Packer
Packer	5.00			3040.00	
Anchor	44.00			3084.00	
Recorder	1.00	6731	Inside	3085.00	
Recorder	1.00	8159	Outside	3086.00	
Bullnose	3.00			3089.00	49.00 Bottom Packers & Anchor

Total Tool Length: 69.00



DRILL STEM TEST REPORT

FLUID SUMMARY

Carrie Exploration & Development

25-19-11w Barton

210 w 22nd Hays Ks 67601

Matzek #4

Job Ticket: 17356

DST#: 2

ATTN:

Test Start: 2012.07.05 @ 18:03:00

Mud and Cushion Information

Mud Type: Gel Chem

Cushion Type:

Oil API:

deg API

Mud Weight: 9.00 lb/gal

Cushion Length:

ft

Water Salinity:

ppm

Viscosity: 57.00 sec/qt

Cushion Volume:

bbbl

Water Loss: 8.29 in³

Gas Cushion Type:

Resistivity: ohm.m

Gas Cushion Pressure:

psia

Salinity: 4000.00 ppm

Filter Cake: 1.00 inches

Recovery Information

Recovery Table

Length ft	Description	Volume bbl
120.00	Gassy oil cut muddy w ater	1.683
0.00	20%gas 40%oil 10%mud 30%w ater	0.000
120.00	Gassy oil cut muddy w ater	1.683
0.00	15%gas 45%oil10%mud 30%w ater	0.000
60.00	muddy w ater 20%mud 80%w ater	0.842

Total Length: 300.00 ft

Total Volume: 4.208 bbl

Num Fluid Samples: 0

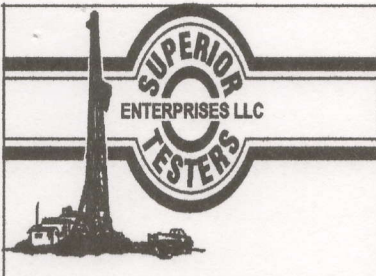
Num Gas Bombs: 0

Serial #:

Laboratory Name:

Laboratory Location:

Recovery Comments:



DRILL STEM TEST REPORT

GAS RATES

Carrie Exploration & Development

25-19-11w Barton

210 w 22nd Hays Ks 67601

Matzek #4

Job Ticket: 17356

DST#: 2

ATTN:

Test Start: 2012.07.05 @ 18:03:00

Gas Rates Information

Temperature: 59 (deg F)
Relative Density: 0.65
Z Factor: 0.8

Gas Rates Table

Flow Period	Elapsed Time	Choke (inches)	Pressure (psia)	Gas Rate (Mcf/d)
1	5	0.13	4.00	1.50
1	5	0.13	4.00	1.50
2	10	0.13	12.00	4.49
2	10	0.13	12.00	4.49

Serial #: 6731

Carrie Exploration & Development

Meizek #4

DST Test Number: 2

