



(620) 585-4250  
 212 Main St. • P.O. Box 218 • Derby, KS 67535  
 1999

# GEOLOGIST'S REPORT

DRILLING TIME AND SAMPLE LOG

COMPANY John Roy Evans Oil Co. LLC  
 LEASE Bieberle #9  
 FIELD Redwing  
 LOCATION Ne-SW-SW-Se (440' FSL, 225' FEL)  
 SEC 32 TWP 17 S RCF 12 W  
 COUNTY Barton STATE Kansas  
 CONTRACTOR Royal Drilling Co. (rig #2)  
 SPUD 7-6-2012 COMP 7-12-2012  
 RTD 3370 LTD 3365  
 MUD UP 2800 TYPE MUD Chemical Dispersed  
 SAMPLES SAVED FROM 2900  
 DRILLING TIME KEPT FROM 2900  
 SAMPLES EXAMINED FROM 2900  
 GEOLOGICAL SUPERVISION FROM 2950  
 GEOLOGIST ON WELL Jim Musgrove

ELEVATION: 1819  
 DEPTH: 1812  
 MEASUREMENTS: 5 1/2" x 7 1/2" SURFACE PRODUCTION  
 FROM -KB-  
 ELECTRICAL LOGS: Log Tech. Radiation  
Galvanic Log  
5 mic

FORMATION TOPS	LOC	SAMPLES
<u>anhydrite</u>	<u>710</u>	<u>1109</u>
<u>gas anhydrite</u>	<u>734</u>	<u>11078</u>
<u>Bieberle</u>	<u>2986</u>	<u>1167</u>
<u>Toronto</u>	<u>3005</u>	<u>1186</u>
<u>Douglas</u>	<u>3016</u>	<u>1197</u>
<u>Bryan lime</u>	<u>3083</u>	<u>1264</u>
<u>Hansburg</u>	<u>3095</u>	<u>1276</u>
<u>Base Kansas City</u>	<u>3332</u>	<u>1513</u>
<u>Aberkane</u>	<u>3350</u>	<u>1531</u>

MARKS

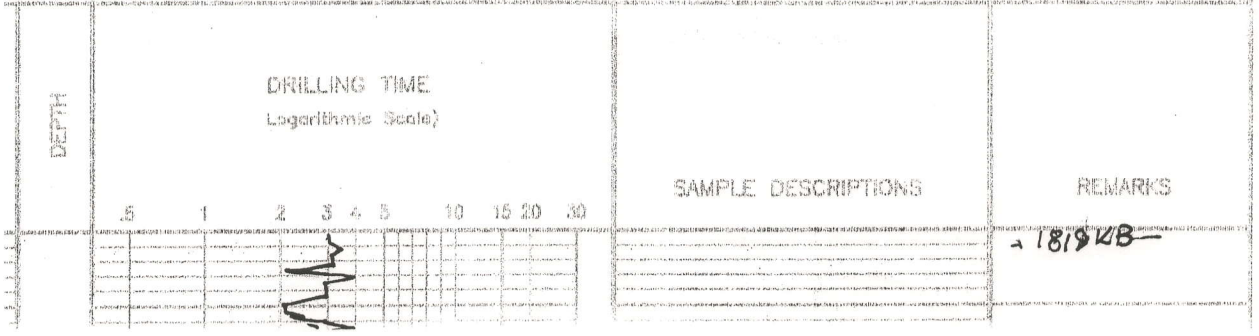
5 1/2" production casing was set & cemented on the Bieberle #9.

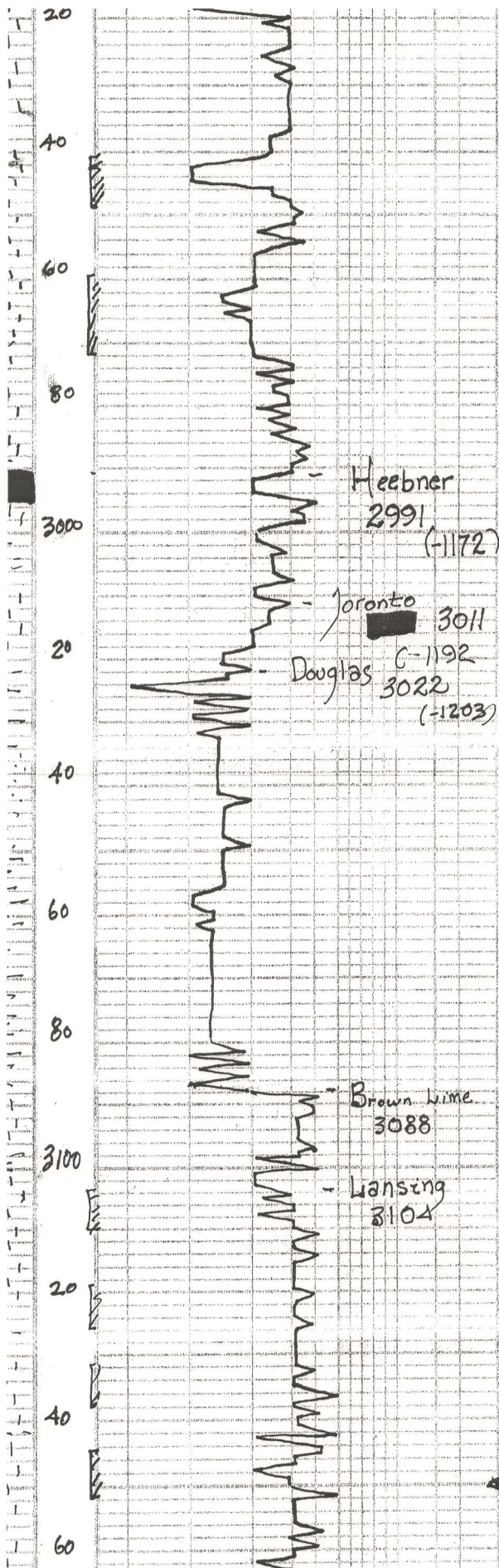


Respectfully submitted,  
 James C. Musgrove  
 Petroleum Geologist

## LEGEND

- Anhydrite
- Salt
- Sandstone
- Shale
- Carbon
- Limestone
- Coal/Lime
- Chert
- Dolomite





ls, gray/wh, ool, cherty,  
poor o' n/s

} 2

ls, gray/wh (xrh) few  
foss, cherty  
+ Dr. gray Δ

} 2

~ blk carb. sh

ls, tan, firm, poorly dev'g  
n/s

} 2

~ v.g. soft silty sh  
+ gray, grayish green, vfg,  
calc, mica, sand, poor vis'o  
n/s

} 2

aa

} }

aa

} 1

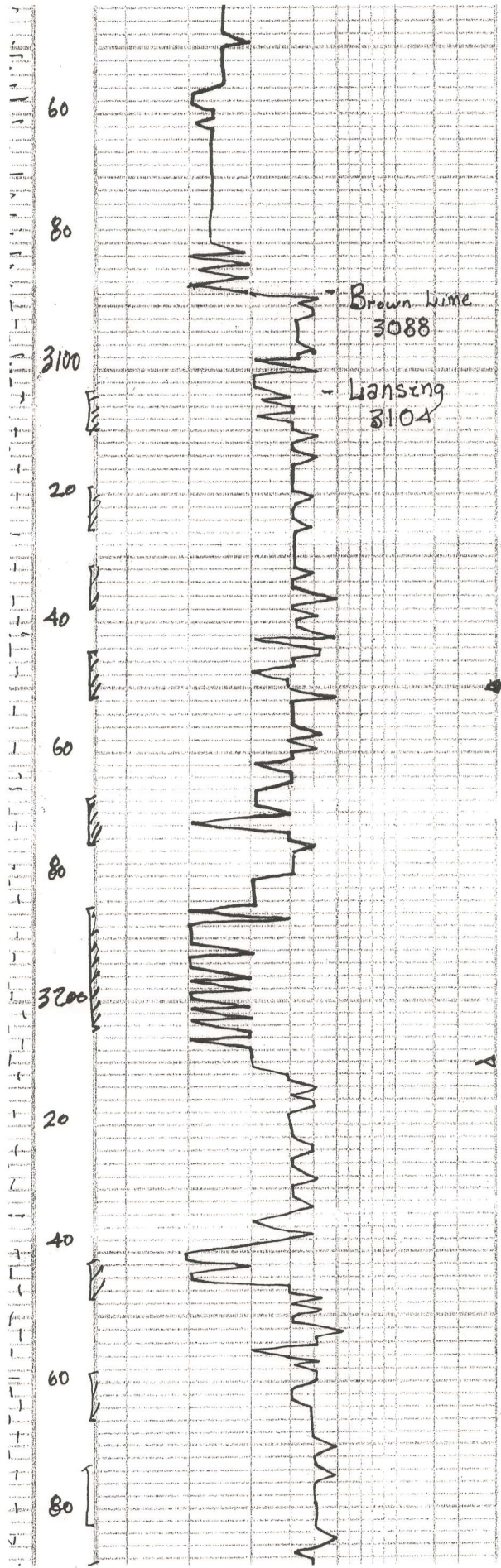
ls, tan, brown, (xrh)  
few Δ; poorly dev'g

ls, wh/crm, (xrh) cherty, poorly  
brown stn, Tr. f, no odo

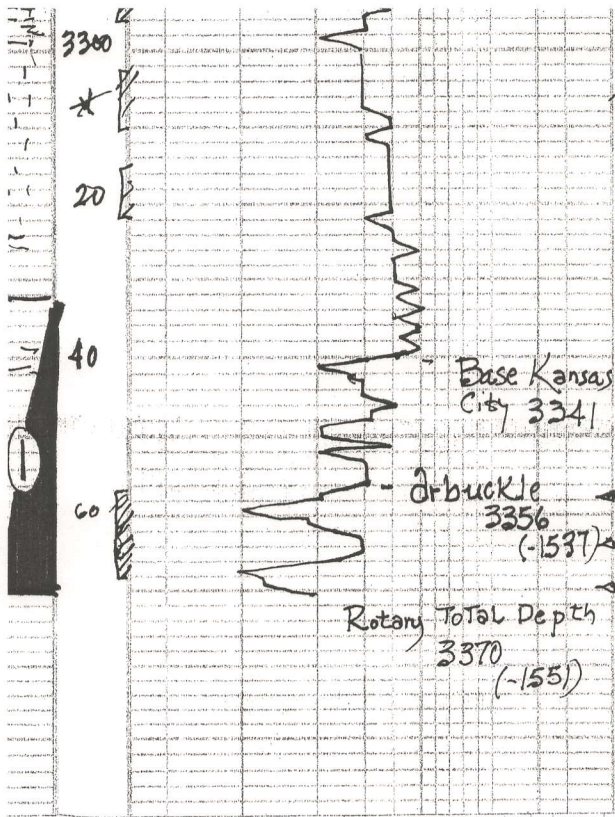
} 1

ls, gray, tan, foss, sub oom -  
poor vis'o, dk brown spotty  
stn, n/s, no odo

ls, wh/gray, cherty, poor o' n/s



} }  
 aa.  
 } }  
 aa.  
 } }  
 ls, tan, brown, (x ls)  
 few sh; poorly dev. sh  
 ls, wh/crm, (x ls), Chiky, Poor  
 brown sh, sh, no odor  
 } }  
 ls, gry; tan, foss, sub oom  
 poor vis, dk brown spbly  
 sh, nfo, no odor  
 ls, wh/gry, Chiky, Poor sh  
 ls, wh/gry, (x ls) slightly col,  
 Chiky, br. blk/brown sh  
 nfo, no odor  
 ls, tan, gry, wh, oom, good oom  
 (barren)  
 + wh Chik.  
 ls, wh/gry, Chiky, Poor  
 } }  
 ls, tan/gry, oom, good oom  
 Chiky, Poor  
 + wh Chik.  
 ls, wh/gry, Chiky,  
 poorly dev. sh  
 } }



ool. scatt. d. brown str. / sat,  
 Sfo, no odor.  
 }  
 ~ ls, wh/ gm, foss, shiny  
 poor vis. of m.  
 }  
 ls, gm / tan, d'y. (dse)  
 ~ mar / gm / green sh.  
 }  
 ~ dol, tan, sec. scatt. pp.  
 light brown str, Sfo, no odor.  
 }  
 ool. sat, poor str, wk Sfo,  
 no odor.

DST # 1 3331  
 - 3370  
 30-30-30-30  
 Blow weak  
 Rec. 2' oil cut mu.  
 (40% oil; 60% mud)  
 38' oil specked muc  
 pressures, ISIP 975  
 ISIP 938  
 I+P 49.5'  
 ISIP 64-65  
 HSH  
 1646  
 -1543