



KANSAS CORPORATION COMMISSION 1091986  
OIL & GAS CONSERVATION DIVISION

Form ACO-1

June 2009

Form Must Be Typed  
Form must be Signed  
All blanks must be Filled

**WELL COMPLETION FORM**  
**WELL HISTORY - DESCRIPTION OF WELL & LEASE**

OPERATOR: License # \_\_\_\_\_

Name: \_\_\_\_\_

Address 1: \_\_\_\_\_

Address 2: \_\_\_\_\_

City: \_\_\_\_\_ State: \_\_\_\_\_ Zip: \_\_\_\_\_ + \_\_\_\_\_

Contact Person: \_\_\_\_\_

Phone: ( \_\_\_\_\_ ) \_\_\_\_\_

CONTRACTOR: License # \_\_\_\_\_

Name: \_\_\_\_\_

Wellsite Geologist: \_\_\_\_\_

Purchaser: \_\_\_\_\_

Designate Type of Completion:

- New Well       Re-Entry       Workover
- Oil       WSW       SWD       SIOW
- Gas       D&A       ENHR       SIGW
- OG       GSW       Temp. Abd.
- CM (Coal Bed Methane)
- Cathodic       Other (Core, Expl., etc.): \_\_\_\_\_

If Workover/Re-entry: Old Well Info as follows:

Operator: \_\_\_\_\_

Well Name: \_\_\_\_\_

Original Comp. Date: \_\_\_\_\_ Original Total Depth: \_\_\_\_\_

- Deepening       Re-perf.       Conv. to ENHR       Conv. to SWD
- Conv. to GSW
- Plug Back: \_\_\_\_\_ Plug Back Total Depth \_\_\_\_\_
- Commingled      Permit #: \_\_\_\_\_
- Dual Completion      Permit #: \_\_\_\_\_
- SWD      Permit #: \_\_\_\_\_
- ENHR      Permit #: \_\_\_\_\_
- GSW      Permit #: \_\_\_\_\_

Spud Date or Recompletion Date      Date Reached TD      Completion Date or Recompletion Date

API No. 15 - \_\_\_\_\_

Spot Description: \_\_\_\_\_

\_\_\_\_\_ - \_\_\_\_\_ - \_\_\_\_\_ Sec. \_\_\_\_\_ Twp. \_\_\_\_\_ S. R. \_\_\_\_\_  East  West

\_\_\_\_\_ Feet from  North /  South Line of Section

\_\_\_\_\_ Feet from  East /  West Line of Section

Footages Calculated from Nearest Outside Section Corner:

- NE       NW       SE       SW

County: \_\_\_\_\_

Lease Name: \_\_\_\_\_ Well #: \_\_\_\_\_

Field Name: \_\_\_\_\_

Producing Formation: \_\_\_\_\_

Elevation: Ground: \_\_\_\_\_ Kelly Bushing: \_\_\_\_\_

Total Depth: \_\_\_\_\_ Plug Back Total Depth: \_\_\_\_\_

Amount of Surface Pipe Set and Cemented at: \_\_\_\_\_ Feet

Multiple Stage Cementing Collar Used?  Yes  No

If yes, show depth set: \_\_\_\_\_ Feet

If Alternate II completion, cement circulated from: \_\_\_\_\_

feet depth to: \_\_\_\_\_ w/ \_\_\_\_\_ sx cmt.

**Drilling Fluid Management Plan**

(Data must be collected from the Reserve Pit)

Chloride content: \_\_\_\_\_ ppm Fluid volume: \_\_\_\_\_ bbls

Dewatering method used: \_\_\_\_\_

Location of fluid disposal if hauled offsite: \_\_\_\_\_

Operator Name: \_\_\_\_\_

Lease Name: \_\_\_\_\_ License #: \_\_\_\_\_

Quarter \_\_\_\_\_ Sec. \_\_\_\_\_ Twp. \_\_\_\_\_ S. R. \_\_\_\_\_  East  West

County: \_\_\_\_\_ Permit #: \_\_\_\_\_

**AFFIDAVIT**

I am the affiant and I hereby certify that all requirements of the statutes, rules and regulations promulgated to regulate the oil and gas industry have been fully complied with and the statements herein are complete and correct to the best of my knowledge.

Submitted Electronically

**KCC Office Use ONLY**

- Letter of Confidentiality Received  
Date: \_\_\_\_\_
- Confidential Release Date: \_\_\_\_\_
- Wireline Log Received
- Geologist Report Received
- UIC Distribution
- ALT  I  II  III Approved by: \_\_\_\_\_ Date: \_\_\_\_\_



1091986

Operator Name: \_\_\_\_\_ Lease Name: \_\_\_\_\_ Well #: \_\_\_\_\_

Sec. \_\_\_\_\_ Twp. \_\_\_\_\_ S. R. \_\_\_\_\_  East  West County: \_\_\_\_\_

**INSTRUCTIONS:** Show important tops and base of formations penetrated. Detail all cores. Report all final copies of drill stems tests giving interval tested, time tool open and closed, flowing and shut-in pressures, whether shut-in pressure reached static level, hydrostatic pressures, bottom hole temperature, fluid recovery, and flow rates if gas to surface test, along with final chart(s). Attach extra sheet if more space is needed. Attach complete copy of all Electric Wire-line Logs surveyed. Attach final geological well site report.

Drill Stem Tests Taken <input type="checkbox"/> Yes <input type="checkbox"/> No <i>(Attach Additional Sheets)</i>  Samples Sent to Geological Survey <input type="checkbox"/> Yes <input type="checkbox"/> No  Cores Taken <input type="checkbox"/> Yes <input type="checkbox"/> No Electric Log Run <input type="checkbox"/> Yes <input type="checkbox"/> No Electric Log Submitted Electronically <input type="checkbox"/> Yes <input type="checkbox"/> No <i>(If no, Submit Copy)</i>  List All E. Logs Run:	<input type="checkbox"/> Log Formation (Top), Depth and Datum <input type="checkbox"/> Sample  Name Top Datum
---	---

CASING RECORD <input type="checkbox"/> New <input type="checkbox"/> Used							
Report all strings set-conductor, surface, intermediate, production, etc.							
Purpose of String	Size Hole Drilled	Size Casing Set (In O.D.)	Weight Lbs. / Ft.	Setting Depth	Type of Cement	# Sacks Used	Type and Percent Additives

ADDITIONAL CEMENTING / SQUEEZE RECORD				
Purpose:	Depth Top Bottom	Type of Cement	# Sacks Used	Type and Percent Additives
_____ Perforate _____ Protect Casing _____ Plug Back TD _____ Plug Off Zone				

Shots Per Foot	PERFORATION RECORD - Bridge Plugs Set/Type Specify Footage of Each Interval Perforated	Acid, Fracture, Shot, Cement Squeeze Record <i>(Amount and Kind of Material Used)</i>	Depth

TUBING RECORD:      Size: \_\_\_\_\_ Set At: \_\_\_\_\_ Packer At: \_\_\_\_\_ Liner Run:  Yes  No

Date of First, Resumed Production, SWD or ENHR. \_\_\_\_\_ Producing Method:  
 Flowing    Pumping    Gas Lift    Other (Explain) \_\_\_\_\_

Estimated Production Per 24 Hours	Oil Bbls.	Gas Mcf	Water Bbls.	Gas-Oil Ratio	Gravity
-----------------------------------	-----------	---------	-------------	---------------	---------

<b>DISPOSITION OF GAS:</b> <input type="checkbox"/> Vented <input type="checkbox"/> Sold <input type="checkbox"/> Used on Lease <i>(If vented, Submit ACO-18.)</i>	<b>METHOD OF COMPLETION:</b> <input type="checkbox"/> Open Hole <input type="checkbox"/> Perf. <input type="checkbox"/> Dually Comp. <input type="checkbox"/> Commingled <i>(Submit ACO-5)</i> <i>(Submit ACO-4)</i> <input type="checkbox"/> Other (Specify) _____	<b>PRODUCTION INTERVAL:</b> _____ _____
--	--	---

Form	ACO1 - Well Completion
Operator	Reif Oil & Gas Company LLC
Well Name	DECKERT 2
Doc ID	1091986

Tops

Name	Top	Datum
anhydrite	994	+1002
Base anhydrite	1028	+968
Heebner	3320	-1324
Toronto	3338	-1342
Douglas	3352	-1356
Brown Lime	3411	-1415
Lansing	3424	-1428
Base Kansas City	3640	-1644
Viola	3679	-1683
Arbuckle	3743	-1747
RTD	3870	-1874
LTD	3866	-1870



**DIAMOND TESTING**  
P.O. Box 157  
**HOISINGTON, KANSAS 67544**  
(620) 653-7550 • (800) 542-7313  
STC 30046.D1169

Company Reif Oil & Gas Co LLC Lease & Well No. Deckert No. 2  
Elevation 1999 KB Formation Arbuckle Effective Pay \_\_\_\_\_ Ft. Ticket No. J2965  
Date 7-3-12 Sec. 36 Twp. 20S Range 16W County Pawnee State Kansas  
Test Approved By James C. Musgrove Diamond Representative John C. Riedl

Formation Test No. 1 Interval Tested from 3,707 ft. to 3,757 ft. Total Depth 3,757 ft.  
Packer Depth 3,702 ft. Size 6 3/4 in. Packer Depth \_\_\_\_\_ ft. Size \_\_\_\_\_ in.  
Packer Depth 3,707 ft. Size 6 3/4 in. Packer Depth \_\_\_\_\_ ft. Size \_\_\_\_\_ in.  
Depth of Selective Zone Set \_\_\_\_\_ ft.

Top Recorder Depth (Inside) 3,710 ft. Recorder Number 30046 Cap. 6,000 psi.  
Bottom Recorder Depth (Outside) 3,754 ft. Recorder Number 11073 Cap. 4,000 psi.  
Below Straddle Recorder Depth \_\_\_\_\_ ft. Recorder Number \_\_\_\_\_ Cap. \_\_\_\_\_ psi.

Drilling Contractor Southwind Drilling, Inc. - Rig 4 Drill Collar Length 120 ft I.D. 2 1/4 in.  
Mud Type Chemical Viscosity 68 Weight Pipe Length \_\_\_\_\_ ft I.D. \_\_\_\_\_ in.  
Weight 9.3 Water Loss 10.2 cc. Drill Pipe Length 3,567 ft I.D. 3 1/2 in.  
Chlorides 8,500 P.P.M. Test Tool Length 20 ft Tool Size 3 1/2-IF in.  
Jars: Make Sterling Serial Number Not Run Anchor Length 50 ft. Size 4 1/2-FH in.  
Did Well Flow? No Reversed Out No Surface Choke Size 1 in. Bottom Choke Size 5/8 in.  
Main Hole Size 7 7/8 in. Tool Joint Size 4 1/2-XH in.

Blow: 1st Open: Packer Failure!  
2nd Open: N/A

Recovered \_\_\_\_\_ ft. of \_\_\_\_\_  
Recovered \_\_\_\_\_ ft. of \_\_\_\_\_  
Recovered \_\_\_\_\_ ft. of \_\_\_\_\_  
Recovered \_\_\_\_\_ ft. of \_\_\_\_\_  
Recovered \_\_\_\_\_ ft. of \_\_\_\_\_  
Recovered \_\_\_\_\_ ft. of \_\_\_\_\_

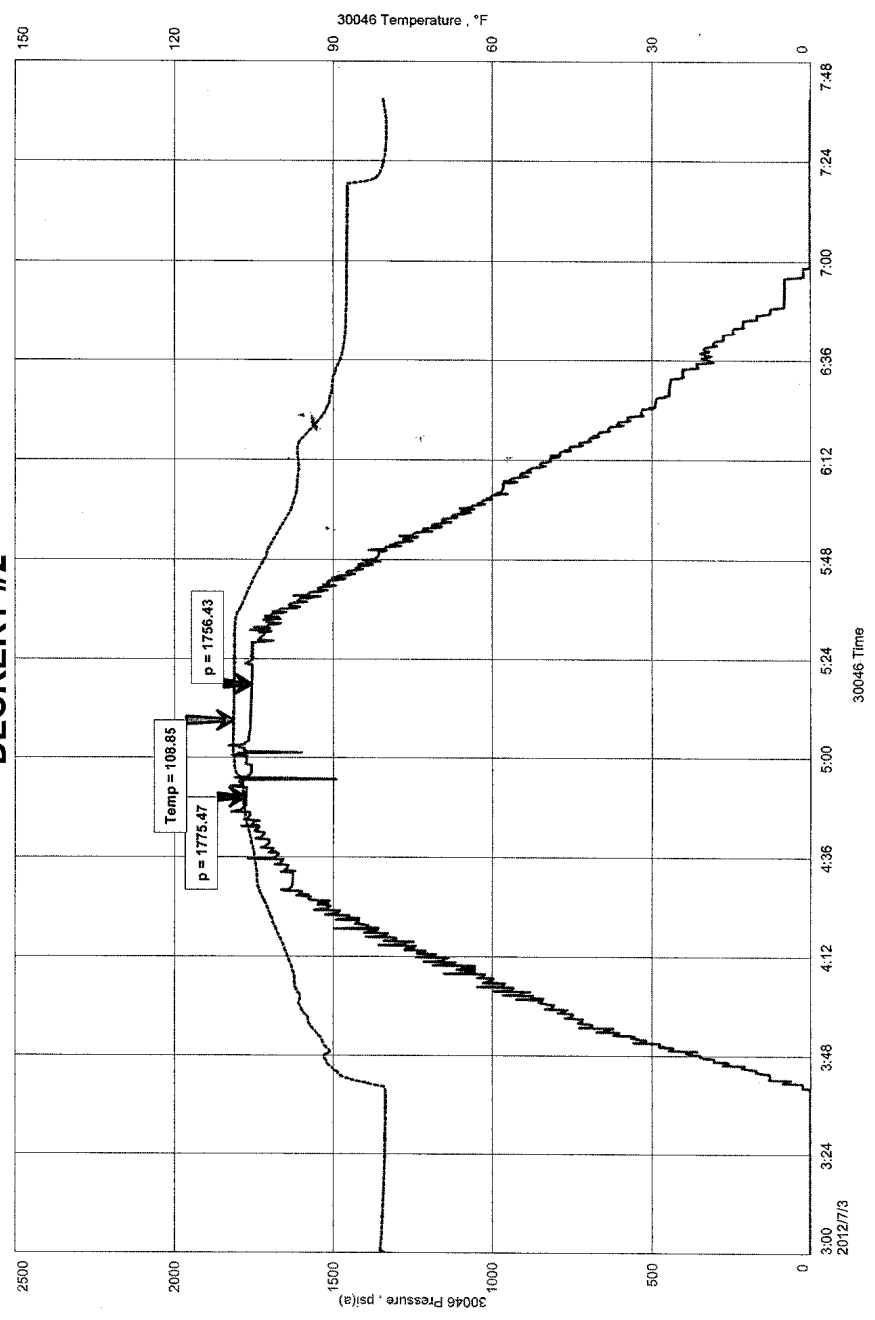
Remarks MISRUN!

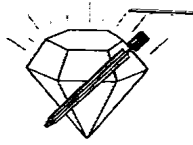
Time Set Packer(s) \_\_\_\_\_ Time Started off Bottom \_\_\_\_\_ Maximum Temperature 109°  
Initial Hydrostatic Pressure.....(A) 1775 P.S.I.  
Initial Flow Period.....Minutes 0 (B) \_\_\_\_\_ P.S.I. to (C) \_\_\_\_\_ P.S.I.  
Initial Closed In Period.....Minutes 0 (D) \_\_\_\_\_ P.S.I.  
Final Flow Period.....Minutes 0 (E) \_\_\_\_\_ P.S.I. to (F) \_\_\_\_\_ P.S.I.  
Final Closed In Period.....Minutes 0 (G) \_\_\_\_\_ P.S.I.  
Final Hydrostatic Pressure.....(H) 1756 P.S.I.

DECKERT #2  
Formation: ARBUCKLE  
Job Number: D1169

REIF OIL+GAS LLC  
Start Test Date: 2012/07/03  
Final Test Date: 2012/07/03

# DECKERT #2





**DIAMOND TESTING**  
P.O. Box 157  
**HOISINGTON, KANSAS 67544**  
(620) 653-7550 • (800) 542-7313  
STC 30046.D1170

Company Reif Oil & Gas Co LLC Lease & Well No. Deckert No. 2  
Elevation 1999 KB Formation Arbuckle Effective Pay \_\_\_\_\_ Ft. Ticket No. J2966  
Date 7-3-12 Sec. 36 Twp. 20S Range 16W County Pawnee State Kansas  
Test Approved By James C. Musgrove Diamond Representative John C. Riedl

Formation Test No. 2 Interval Tested from 3,636 ft. to 3,757 ft. Total Depth 3,757 ft.  
Packer Depth 3,631 ft. Size 6 3/4 in. Packer Depth \_\_\_\_\_ ft. Size \_\_\_\_\_ in.  
Packer Depth 3,636 ft. Size 6 3/4 in. Packer Depth \_\_\_\_\_ ft. Size \_\_\_\_\_ in.  
Depth of Selective Zone Set \_\_\_\_\_ ft.

Top Recorder Depth (Inside) 3,639 ft. Recorder Number 30046 Cap. 6,000 psi.  
Bottom Recorder Depth (Outside) 3,754 ft. Recorder Number 11073 Cap. 4,000 psi.  
Below Straddle Recorder Depth \_\_\_\_\_ ft. Recorder Number \_\_\_\_\_ Cap. \_\_\_\_\_ psi.

Drilling Contractor Southwind Drilling, Inc. - Rig 4 Drill Collar Length 120 ft I.D. 2 1/4 in.  
Mud Type Chemical Viscosity 65 Weight Pipe Length \_\_\_\_\_ ft I.D. \_\_\_\_\_ in.  
Weight 9.3 Water Loss 10.2 cc. Drill Pipe Length 3,496 ft I.D. 3 1/2 in.  
Chlorides 8,500 P.P.M. Test Tool Length 20 ft Tool Size 3 1/2-IF in.  
Jars: Make Sterling Serial Number Not Run Anchor Length 31' perf. w/90' drill pipe Size 4 1/2-FH in.  
Did Well Flow? No Reversed Out No Surface Choke Size 1 in. Bottom Choke Size 5/8 in.  
Main Hole Size 7 7/8 in. Tool Joint Size 4 1/2-XH in.

Blow: 1st Open: Strong blow. Gas to surface in 4 mins. Stabilized at 250 MCF/D. No blow back during shut-in.

2nd Open: Strong blow. Water to surface in 5 mins. Strong blow back during shut-in.

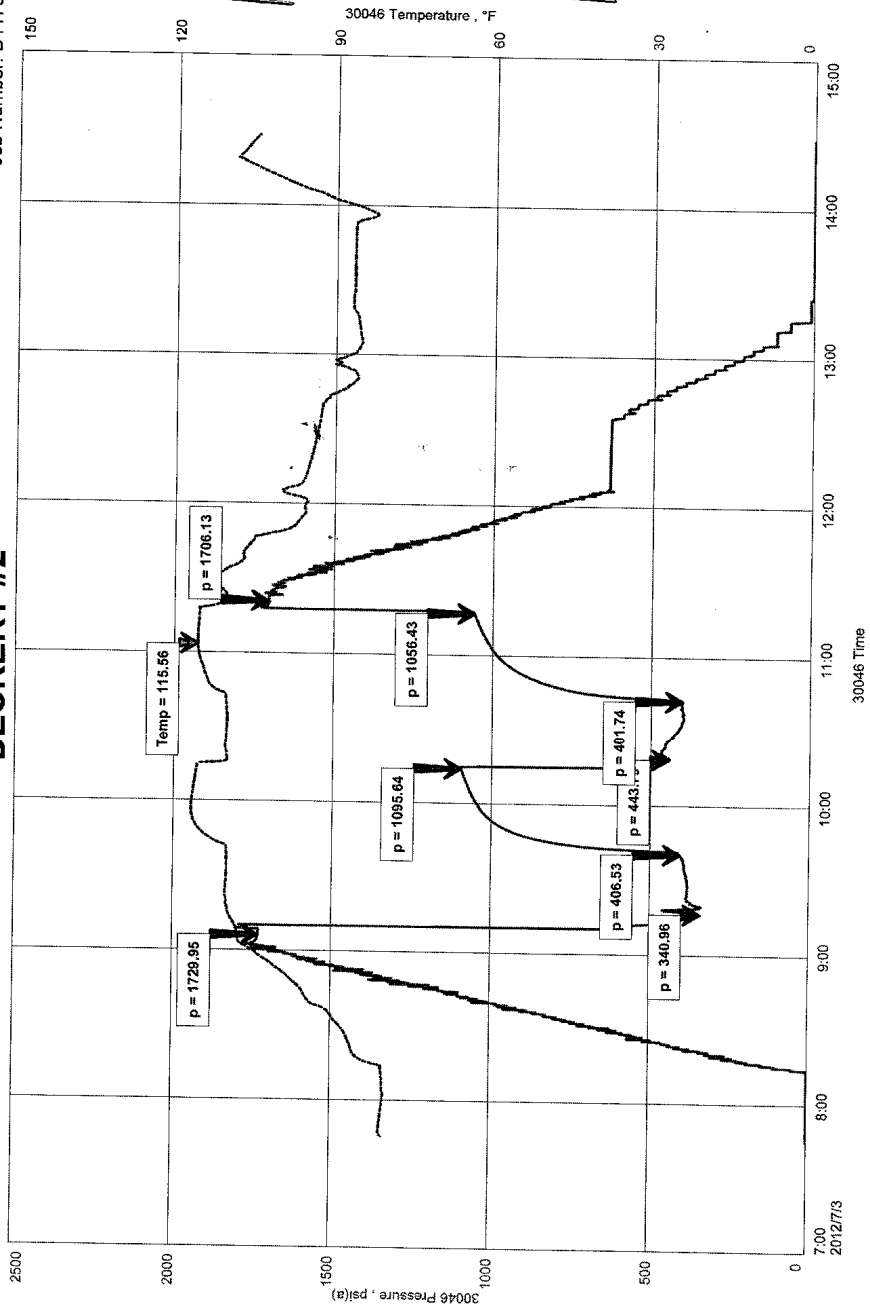
Recovered 1,240 ft. of gassy oil = 17.086600 bbls. (Grind out: 50%-gas; 50%-oil)  
Recovered 60 ft. of water = .295200 bbls. (Chlorides: 26,000 Ppm)  
Recovered 1,300 ft. of TOTAL FLUID = 17.381800 bbls.  
Recovered \_\_\_\_\_ ft. of \_\_\_\_\_  
Recovered \_\_\_\_\_ ft. of \_\_\_\_\_  
Recovered \_\_\_\_\_ ft. of \_\_\_\_\_  
Remarks \_\_\_\_\_

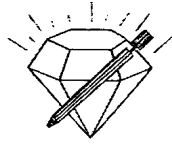
Time Set Packer(s) 9:10 A.M. Time Started off Bottom 11:10 A.M. Maximum Temperature 116°  
Initial Hydrostatic Pressure.....(A) 1730 P.S.I.  
Initial Flow Period.....Minutes 30 (B) 341 P.S.I. to (C) 407 P.S.I.  
Initial Closed In Period.....Minutes 30 (D) 1096 P.S.I.  
Final Flow Period.....Minutes 30 (E) 444 P.S.I. to (F) 402 P.S.I.  
Final Closed In Period.....Minutes 30 (G) 1056 P.S.I.  
Final Hydrostatic Pressure.....(H) 1706 P.S.I.

REIF OIL+GAS LLC  
Start Test Date: 2012/07/03  
Final Test Date: 2012/07/03

DECKERT #2  
Formation: ARBUCKLE  
Job Number: D1170

# DECKERT #2





**DIAMOND TESTING**  
P.O. Box 157  
**HOISINGTON, KANSAS 67544**  
(620) 653-7550 • (800) 542-7313  
STC 30046.D1171

Company Reif Oil & Gas Co LLC Lease & Well No. Deckert No. 2  
Elevation 1999 KB Formation Arbuckle Effective Pay \_\_\_\_\_ Ft. Ticket No. J2967  
Date 7-3-12 Sec. 36 Twp. 20S Range 16W County Pawnee State Kansas  
Test Approved By James C. Musgrove Diamond Representative John C. Riedl

Formation Test No. 3 Interval Tested from 3,760 ft. to 3,772 ft. Total Depth 3,772 ft.  
Packer Depth 3,755 ft. Size 6 3/4 in. Packer Depth \_\_\_\_\_ ft. Size \_\_\_\_\_ in.  
Packer Depth 3,760 ft. Size 6 3/4 in. Packer Depth \_\_\_\_\_ ft. Size \_\_\_\_\_ in.  
Depth of Selective Zone Set \_\_\_\_\_ ft.

Top Recorder Depth (Inside) 3,763 ft. Recorder Number 30046 Cap. 6,000 psi.  
Bottom Recorder Depth (Outside) 3,769 ft. Recorder Number 11073 Cap. 4,000 psi.  
Below Straddle Recorder Depth \_\_\_\_\_ ft. Recorder Number \_\_\_\_\_ Cap. \_\_\_\_\_ psi.

Drilling Contractor Southwind Drilling, Inc. - Rig 4 Drill Collar Length 120 ft I.D. 2 1/4 in.  
Mud Type Chemical Viscosity 60 Weight Pipe Length \_\_\_\_\_ ft I.D. \_\_\_\_\_ in.  
Weight 9.2 Water Loss 10.0 cc. Drill Pipe Length 3,620 ft I.D. 3 1/2 in.  
Chlorides 9,000 P.P.M. Test Tool Length 20 ft Tool Size 3 1/2-IF in.  
Jars: Make Sterling Serial Number Not Run Anchor Length \_\_\_\_\_ ft. Size 4 1/2-FH in.  
Did Well Flow? No Reversed Out No Surface Choke Size 1 in. Bottom Choke Size 5/8 in.  
Main Hole Size 7 7/8 in. Tool Joint Size 4 1/2-XH in.

Blow: 1st Open: Weak blow. Dead in 10 mins. Flushed tool but didn't help. No blow back during shut-in.  
2nd Open: No blow. No blow back during shut-in.

Recovered 20 ft. of thick drilling mud (sludge) = .098400 bbls.  
Recovered \_\_\_\_\_ ft. of \_\_\_\_\_  
Recovered \_\_\_\_\_ ft. of \_\_\_\_\_  
Recovered \_\_\_\_\_ ft. of \_\_\_\_\_  
Recovered \_\_\_\_\_ ft. of \_\_\_\_\_  
Recovered \_\_\_\_\_ ft. of \_\_\_\_\_

Remarks Tool slid approximately 10 ft. Tool plugged. MISRUN!

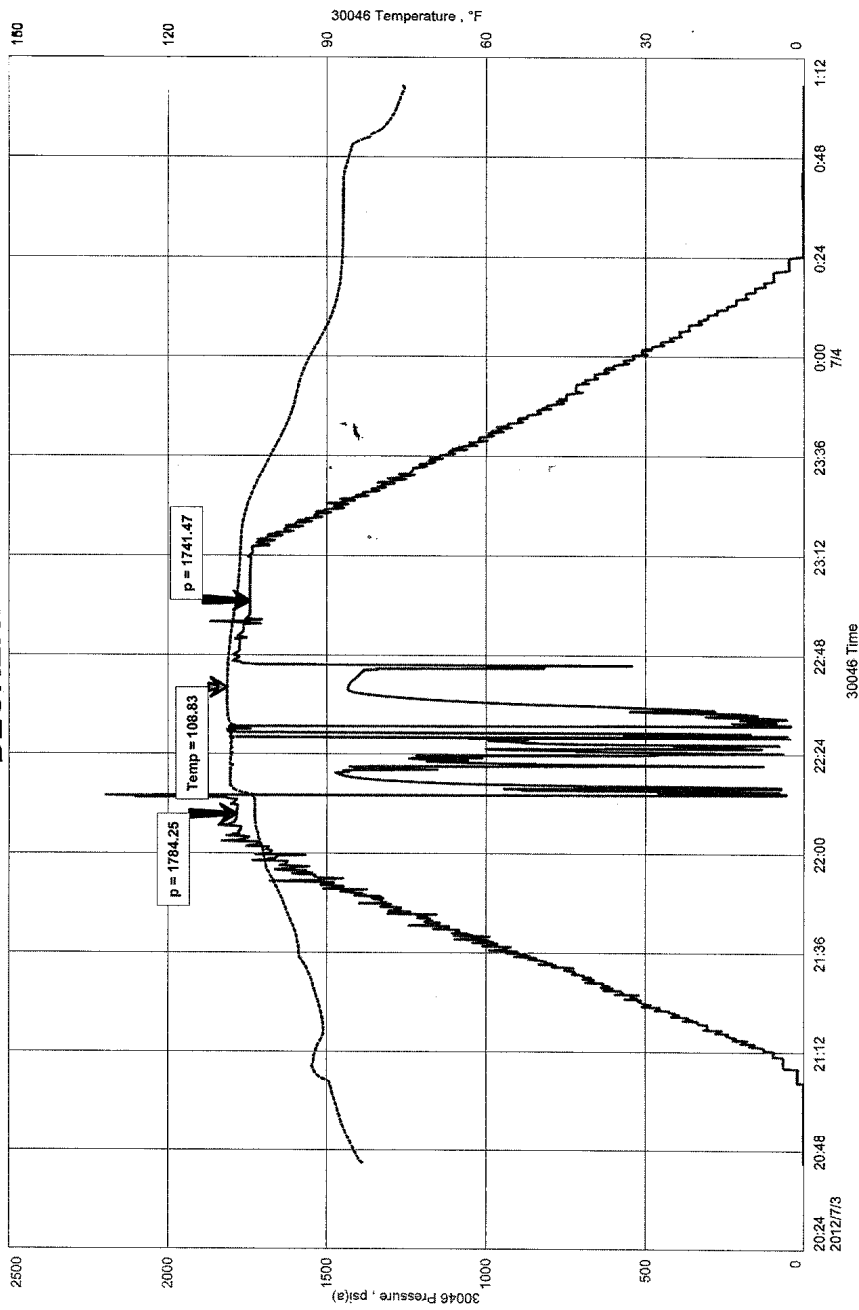
Time Set Packer(s) 10:10 P.M. Time Started off Bottom 10:45 P.M. Maximum Temperature 109°  
Initial Hydrostatic Pressure.....(A) 1784 P.S.I.  
Initial Flow Period.....Minutes 20 (B) \_\_\_\_\_ P.S.I. to (C) \_\_\_\_\_ P.S.I.  
Initial Closed In Period.....Minutes 15 (D) \_\_\_\_\_ P.S.I.  
Final Flow Period.....Minutes 0 (E) \_\_\_\_\_ P.S.I. to (F) \_\_\_\_\_ P.S.I.  
Final Closed In Period.....Minutes 0 (G) \_\_\_\_\_ P.S.I.  
Final Hydrostatic Pressure.....(H) 1741 P.S.I.

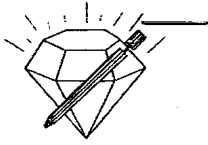


REIF OIL+GAS LLC  
Start Test Date: 2012/07/03  
Final Test Date: 2012/07/04

DECKERT #2  
Formation: ARBUCKLE  
Job Number: D1171

# DECKERT #2





**DIAMOND TESTING**  
P.O. Box 157  
**HOISINGTON, KANSAS 67544**  
(620) 653-7550 • (800) 542-7313  
STC 30046.D1172

Company Reif Oil & Gas Co LLC Lease & Well No. Deckert No. 2  
Elevation 1999 KB Formation Arbuckle Effective Pay \_\_\_\_\_ Ft. Ticket No. J296  
Date 7-4-12 Sec. 36 Twp. 20S Range 16W County Pawnee State Kansas  
Test Approved By James C. Musgrove Diamond Representative \_\_\_\_\_ John C. Riedl

Formation Test No. 4 Interval Tested from 3,760 ft. to 3,772 ft. Total Depth 3,772 ft.  
Packer Depth 3,755 ft. Size 6 3/4 in. Packer Depth \_\_\_\_\_ ft. Size \_\_\_\_\_ in.  
Packer Depth 3,760 ft. Size 6 3/4 in. Packer Depth \_\_\_\_\_ ft. Size \_\_\_\_\_ in.  
Depth of Selective Zone Set \_\_\_\_\_ ft.

Top Recorder Depth (Inside) 3,763 ft. Recorder Number 30046 Cap. 6,000  
Bottom Recorder Depth (Outside) 3,769 ft. Recorder Number 11073 Cap. 4,000  
Below Straddle Recorder Depth \_\_\_\_\_ ft. Recorder Number \_\_\_\_\_ Cap. \_\_\_\_\_

Drilling Contractor Southwind Drilling, Inc. - Rig 4 Drill Collar Length 120 ft I.D. 2 1/2  
Mud Type Chemical Viscosity 50 Weight Pipe Length \_\_\_\_\_ ft I.D. \_\_\_\_\_  
Weight 9.2 Water Loss 10.0 cc. Drill Pipe Length 3,620 ft I.D. 3 1/2  
Chlorides 8,000 P.P.M. Test Tool Length 20 ft Tool Size 3 1/2-I  
Jars: Make Sterling Serial Number Not Run Anchor Length 12 ft. Size 4 1/2-FT  
Did Well Flow? No Reversed Out No Surface Choke Size 1 in. Bottom Choke Size 5/8  
Main Hole Size 7 7/8 in. Tool Joint Size 4 1/2-XI

Blow: 1st Open: Strong blow. Off bottom of bucket in 1 min. No blow back during shut-in.  
2nd Open: Strong blow. Off bottom of bucket in 1 min. Gas to surface in 10 mins. Stabilized at 15 MCF/D. Strong blow back during shut-in.

Recovered 200 ft. of water & oil cut gassy mud = 2.846000 bbls. (Grind out: 25%-gas; 15%-oil; 10%-water; 50%-mud)  
Recovered 800 ft. of gas cut water = 10.266800 bbls. (Grind out: 15%-gas; 85%-water) Chlorides: 34,000 Ppm  
Recovered 1,000 ft. of TOTAL FLUID = 13.112800 bbls.  
Recovered \_\_\_\_\_ ft. of \_\_\_\_\_  
Recovered \_\_\_\_\_ ft. of \_\_\_\_\_  
Recovered \_\_\_\_\_ ft. of \_\_\_\_\_

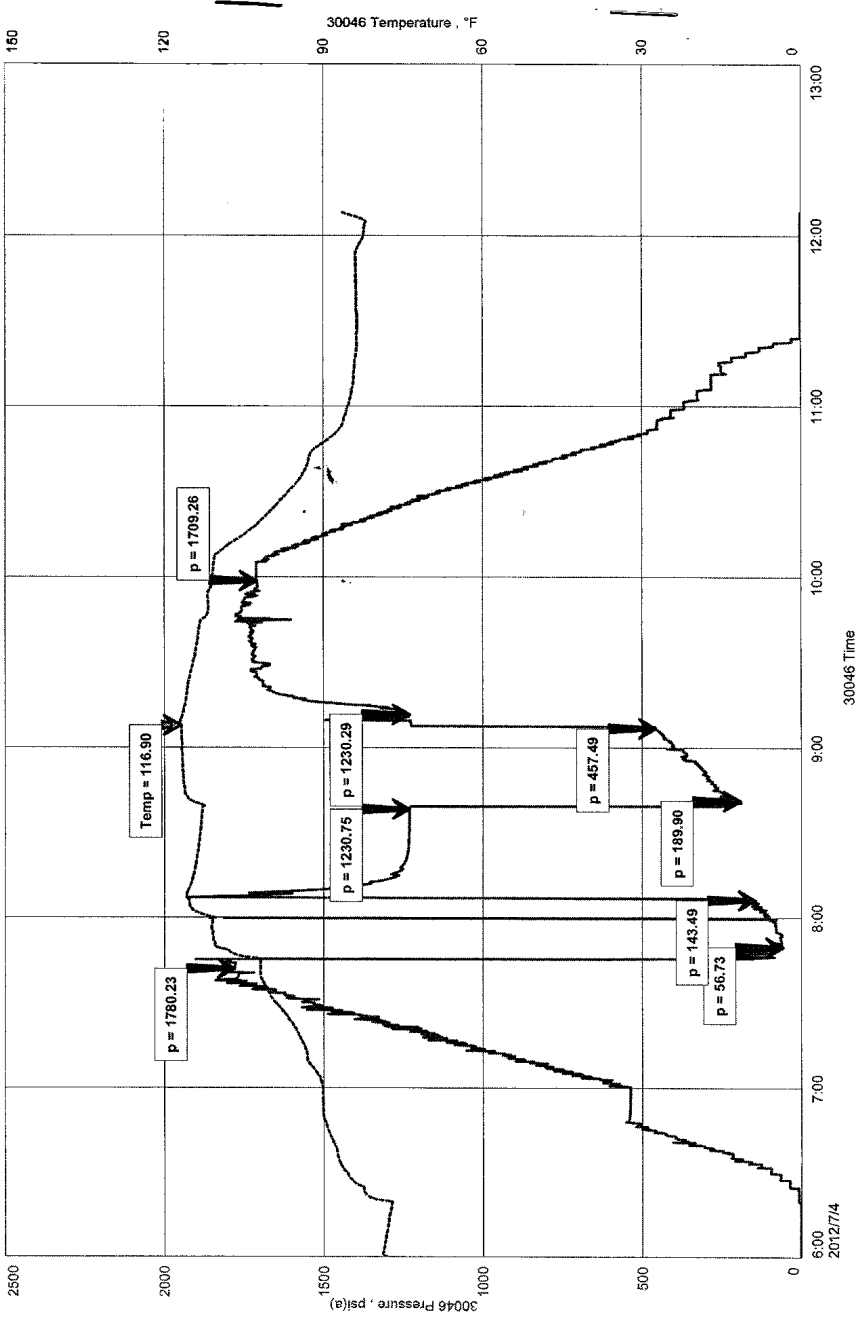
Remarks Tool slid during test causing erratic Psi readings.

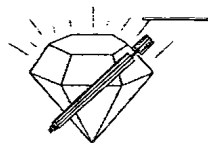
Time Set Packer(s) 7:45 A.M. Time Started off Bottom 9:45 A.M. Maximum Temperature 117°  
Initial Hydrostatic Pressure.....(A) 1780 P.S.I.  
Initial Flow Period.....Minutes 30 (B) 57 P.S.I. to (C) 143 P.S.I.  
Initial Closed In Period.....Minutes 30 (D) 1231 P.S.I.  
Final Flow Period.....Minutes 30 (E) 190 P.S.I. to (F) 457 P.S.I.  
Final Closed In Period.....Minutes 30 (G) 1230 P.S.I.  
Final Hydrostatic Pressure.....(H) 1709 P.S.I.

DECKERT #2  
Formation: ARBUCKLE  
Job Number: D1172

REIF OIL+GAS LLC  
Start Test Date: 2012/07/04  
Final Test Date: 2012/07/04

### DECKERT #2





**DIAMOND TESTING**  
P.O. Box 157  
**HOISINGTON, KANSAS 67544**  
(620) 653-7550 • (800) 542-7313  
STC 30046.D1173

Company Reif Oil & Gas Co LLC Lease & Well No. Deckert No. 2  
Elevation 1999 KB Formation Arbuckle Effective Pay \_\_\_\_\_ Ft. Ticket No. J2969  
Date 7-4-12 Sec. 36 Twp. 20S Range 16W County Pawnee State Kansas  
Test Approved By James C. Musgrove Diamond Representative \_\_\_\_\_ John C. Riedl

Formation Test No. 5 Interval Tested from 3,789 ft. to 3,800 ft. Total Depth 3,800 ft.  
Packer Depth 3,784 ft. Size 6 3/4 in. Packer Depth \_\_\_\_\_ ft. Size \_\_\_\_\_ in.  
Packer Depth 3,789 ft. Size 6 3/4 in. Packer Depth \_\_\_\_\_ ft. Size \_\_\_\_\_ in.  
Depth of Selective Zone Set \_\_\_\_\_ ft.

Top Recorder Depth (Inside) 3,792 ft. Recorder Number 30046 Cap. 6,000 psi.  
Bottom Recorder Depth (Outside) 3,797 ft. Recorder Number 11073 Cap. 4,000 psi.  
Below Straddle Recorder Depth \_\_\_\_\_ ft. Recorder Number \_\_\_\_\_ Cap. \_\_\_\_\_ psi.

Drilling Contractor Southwind Drilling, Inc. - Rig 4 Drill Collar Length 120 ft I.D. 2 1/4 in.  
Mud Type Chemical Viscosity 50 Weight Pipe Length \_\_\_\_\_ ft I.D. \_\_\_\_\_ in.  
Weight 9.2 Water Loss 10.0 cc. Drill Pipe Length 3,649 ft I.D. 3 1/2 in.  
Chlorides 8,000 P.P.M. Test Tool Length 20 ft Tool Size 3 1/2-IF in.  
Jars: Make Sterling Serial Number Not Run Anchor Length 11 ft. Size 4 1/2-FH in.  
Did Well Flow? No Reversed Out No Surface Choke Size 1 in. Bottom Choke Size 5/8 in.  
Main Hole Size 7 7/8 in. Tool Joint Size 4 1/2-XH in.

Blow: 1st Open: Strong blow. Gas to surface in 5 mins. Stabilized at 250 MCF/D. Strong blow back during shut-in.  
2nd Open: Strong blow. Off bottom of bucket in 1 min. Oil to surface in 20 mins. Strong blow back during shut-in.

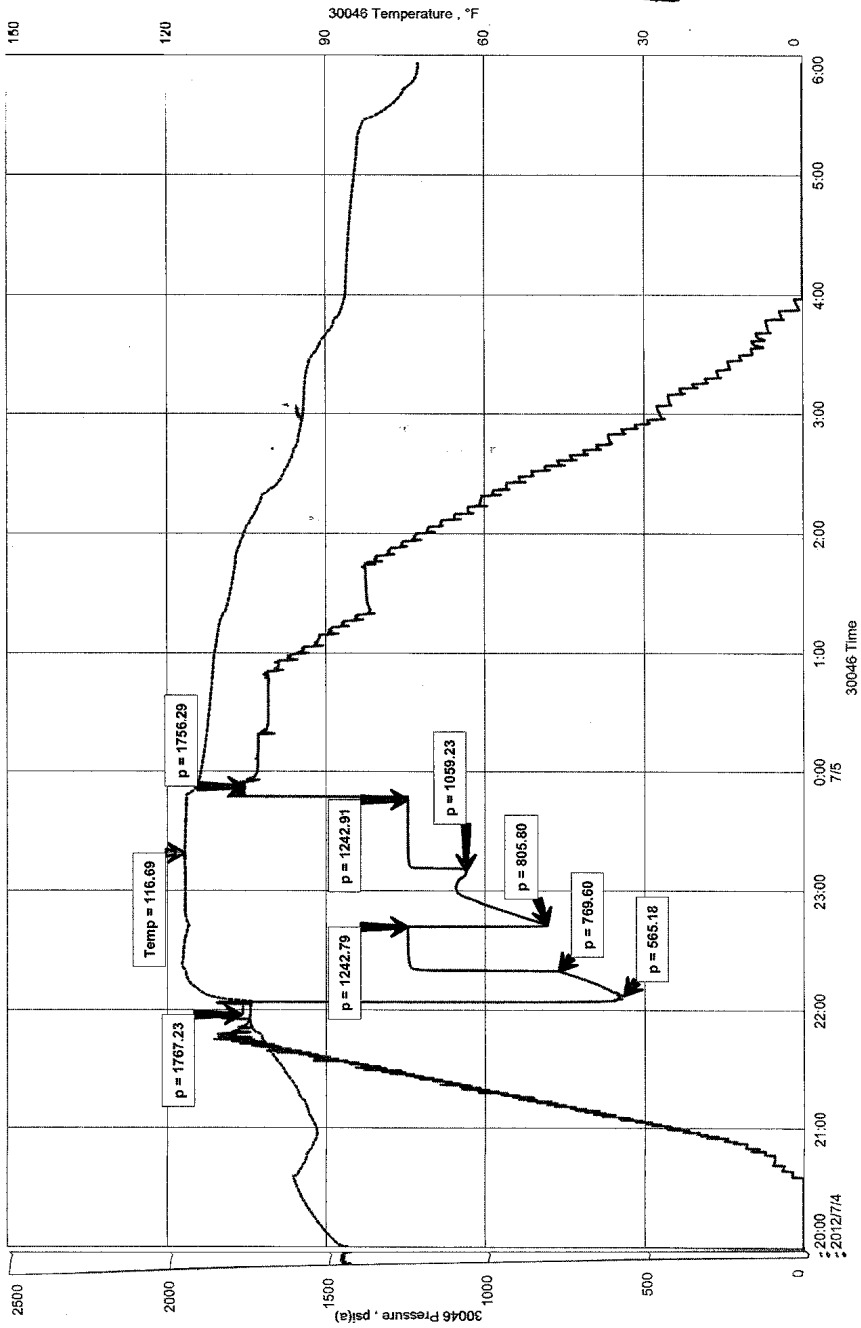
Recovered 2,600 ft. of gassy oil = 36.998000 bbls. (Grind out: 50%-gas; 50%-oil)  
Recovered 1,100 ft. of gassy water = 14.535800 bbls. (Grind out: 20%-gas; 80%-water) Chlorides: 30,000 Ppm  
Recovered 3,700 ft. of TOTAL FLUID = 51.533800 bbls.  
Recovered \_\_\_\_\_ ft. of \_\_\_\_\_  
Recovered \_\_\_\_\_ ft. of \_\_\_\_\_  
Recovered \_\_\_\_\_ ft. of \_\_\_\_\_  
Remarks \_\_\_\_\_

Time Set Packer(s) 10:10 P.M. Time Started off Bottom 11:50 P.M. Maximum Temperature 117°  
Initial Hydrostatic Pressure.....(A) 1767 P.S.I.  
Initial Flow Period.....Minutes 20 (B) 565 P.S.I. to (C) 770 P.S.I.  
Initial Closed In Period.....Minutes 20 (D) 1243 P.S.I.  
Final Flow Period.....Minutes 30 (E) 806 P.S.I. to (F) 1059 P.S.I.  
Final Closed In Period.....Minutes 30 (G) 1243 P.S.I.  
Final Hydrostatic Pressure.....(H) 1756 P.S.I.

DECKERT #2  
Formation: ARBUCKLE  
Job Number: D1173

# DECKERT #2

REF OIL L+GAS LLC  
Start Test Date: 2012/07/04  
Final Test Date: 2012/07/05





**BASIC**<sup>SM</sup>  
ENERGY SERVICES  
PRESSURE PUMPING & WIRELINE

10244 NE Hwy. 61  
P.O. Box 8613  
Pratt, Kansas 67124  
Phone 620-672-1201

**FIELD SERVICE TICKET**

1718 06702 A

DATE \_\_\_\_\_ TICKET NO. \_\_\_\_\_

DATE OF JOB 7-6-12	DISTRICT Pratt	NEW WELL <input type="checkbox"/>	OLD WELL <input checked="" type="checkbox"/>	PROD <input type="checkbox"/>	INJ <input type="checkbox"/>	WDW <input type="checkbox"/>	CUSTOMER ORDER NO.:		
CUSTOMER Rosa Oil Co		LEASE Duckert		WELL NO. 2					
ADDRESS		COUNTY Pawnee		STATE KS					
CITY		STATE		SERVICE CREW Orlando, Kansas, Prater					
AUTHORIZED BY		JOB TYPE: C New - 5/2							
EQUIPMENT#	HRS	EQUIPMENT#	HRS	EQUIPMENT#	HRS	TRUCK CALLED	DATE	AM	TIME
3720	1						7-6-12	AM	11:00
3320	1					ARRIVED AT JOB	7-6-12	AM	1:00
1780	1					START OPERATION		AM	
						FINISH OPERATION		AM	
						RELEASED		AM	
						MILES FROM STATION TO WELL		AM	65

CONTRACT CONDITIONS: (This contract must be signed before the job is commenced or merchandise is delivered).  
The undersigned is authorized to execute this contract as an agent of the customer. As such, the undersigned agrees and acknowledges that this contract for services, materials, products, and/or supplies includes all of and only those terms and conditions appearing on the front and back of this document. No additional or substitute terms and/or conditions shall become a part of this contract without the written consent of an officer of Basic Energy Services LP.

SIGNED: \_\_\_\_\_  
(WELL OWNER, OPERATOR, CONTRACTOR OR AGENT)

ITEM PRICE REF. NO.	MATERIAL, EQUIPMENT AND SERVICES USED	UNIT	QUANTITY	UNIT PRICE	\$ AMOUNT
CP103	Buildup Post	SK	150		
CP103	Buildup Post	SK	50		
CP105	C-111P	LB	33		
CC111	Seal	LB	1334		
CC112	Reaction Reducer	LB	97		
CC201	6/16 ball	LB	750		
CE103	Top & bottom plug	EA	1		
CE201	Buildup Stone 50	EA	1		
CE1151	Turbulent Flow St. 50	EA	1		
CE1151	Turbulent Flow St. 50	EA	5		
CE1161	Ball Valve 50	EA	1		
CE204	Claymat	Gal	5		
CE151	Mud Solvent	Gal	300		
E100	Pressure Transducer	EA	65		
E101	Heavy Equipment M. Valve	EA	150		
E113	Ball Valve	EA	559		
CE304	D-100 Clay 3000-4000	EA	1		
CE300	Plug Cement	EA	200		
CE304	Plug Cement	EA	1		
5000	Service Support	EA	1		

CHEMICAL / ACID DATA:			

SUB TOTAL		2433.11
SERVICE & EQUIPMENT	%TAX ON \$	
MATERIALS	%TAX ON \$	
TOTAL		

SERVICE REPRESENTATIVE Steve Oil Co	THE ABOVE MATERIAL AND SERVICE ORDERED BY CUSTOMER AND RECEIVED BY: (WELL OWNER OPERATOR CONTRACTOR OR AGENT)
--	--

FIELD SERVICE ORDER NO. \_\_\_\_\_