



# TEMPORARY ABANDONMENT WELL APPLICATION

OPERATOR: License# \_\_\_\_\_  
 Name: \_\_\_\_\_  
 Address 1: \_\_\_\_\_  
 Address 2: \_\_\_\_\_  
 City: \_\_\_\_\_ State: \_\_\_\_\_ Zip: \_\_\_\_\_ + \_\_\_\_\_  
 Contact Person: \_\_\_\_\_  
 Phone: ( \_\_\_\_\_ ) \_\_\_\_\_  
 Contact Person Email: \_\_\_\_\_  
 Field Contact Person: \_\_\_\_\_  
 Field Contact Person Phone: ( \_\_\_\_\_ ) \_\_\_\_\_

API No. 15- \_\_\_\_\_  
 Spot Description: \_\_\_\_\_  
 \_\_\_\_\_ Sec. \_\_\_\_\_ Twp. \_\_\_\_\_ S. R. \_\_\_\_\_  E  W  
 \_\_\_\_\_ feet from  N /  S Line of Section  
 \_\_\_\_\_ feet from  E /  W Line of Section  
 GPS Location: Lat: \_\_\_\_\_, Long: \_\_\_\_\_  
 County: \_\_\_\_\_ (e.g. xx.xxxxx) (e.g. -xxx.xxxxx)  
 Lease Name: \_\_\_\_\_ Well #: \_\_\_\_\_  
 Elevation: \_\_\_\_\_  GL  KB  
 Well Type: (check one)  Oil  Gas  OG  WSW  Other: \_\_\_\_\_  
 SWD Permit #: \_\_\_\_\_  ENHR Permit #: \_\_\_\_\_  
 Gas Storage Permit #: \_\_\_\_\_  
 Spud Date: \_\_\_\_\_ Date Shut-In: \_\_\_\_\_

	Conductor	Surface	Production	Intermediate	Liner	Tubing
Size						
Setting Depth						
Amount of Cement						
Top of Cement						
Bottom of Cement						

Casing Fluid Level: \_\_\_\_\_ How Determined? \_\_\_\_\_ Date: \_\_\_\_\_  
 Casing Squeeze(s): \_\_\_\_\_ to \_\_\_\_\_ w / \_\_\_\_\_ sacks of cement, \_\_\_\_\_ to \_\_\_\_\_ w / \_\_\_\_\_ sacks of cement. Date: \_\_\_\_\_  
 (top) (bottom) (top) (bottom)  
 Do you have a valid Oil & Gas Lease?  Yes  No  
 Depth and Type:  Junk in Hole at \_\_\_\_\_ (depth)  Tools in Hole at \_\_\_\_\_ (depth) Casing Leaks:  Yes  No Depth of casing leak(s): \_\_\_\_\_  
 Type Completion:  ALT. I  ALT. II Depth of:  DV Tool: \_\_\_\_\_ w / \_\_\_\_\_ sacks of cement  Port Collar: \_\_\_\_\_ w / \_\_\_\_\_ sack of cement  
 (depth) (depth)  
 Packer Type: \_\_\_\_\_ Size: \_\_\_\_\_ Inch Set at: \_\_\_\_\_ Feet  
 Total Depth: \_\_\_\_\_ Plug Back Depth: \_\_\_\_\_ Plug Back Method: \_\_\_\_\_

**Geological Data:**

Formation Name	Formation Top	Formation Base	Completion Information
1. _____	At: _____	to _____ Feet	Perforation Interval _____ to _____ Feet or Open Hole Interval _____ to _____ Feet
2. _____	At: _____	to _____ Feet	Perforation Interval _____ to _____ Feet or Open Hole Interval _____ to _____ Feet

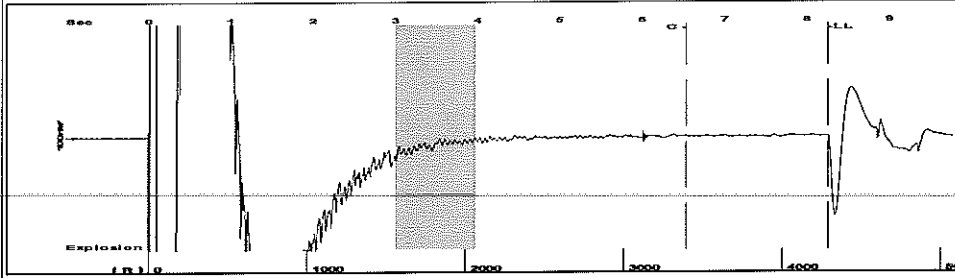
Submitted Electronically

<b>Do NOT Write in This Space - KCC USE ONLY</b>	Date Tested: _____	Results: _____	Date Plugged: _____	Date Repaired: _____	Date Put Back in Service: _____
	Review Completed by: _____	Comments: _____	TA Approved: Yes <input type="checkbox"/> Denied <input type="checkbox"/>		

**Mail to the Appropriate KCC Conservation Office:**

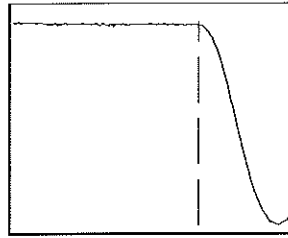
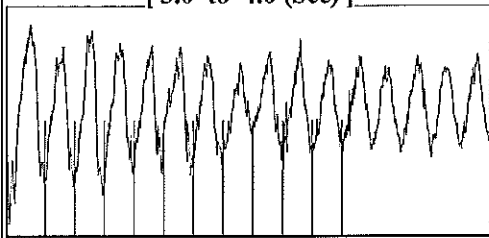
	KCC District Office #1 - 210 E. Frontview, Suite A, Dodge City, KS 67801	Phone 620.225.8888
	KCC District Office #2 - 3450 N. Rock Road, Building 600, Suite 601, Wichita, KS 67226	Phone 316.630.4000
	KCC District Office #3 - 1500 SW Seventh Steet, Chanute, KS 66720	Phone 620.432.2300
	KCC District Office #4 - 2301 E. 13th Street, Hays, KS 67601-2651	Phone 785.625.0550
	Underground Porosity Gas Storage (UPGS) 8200 E. 34th Street Circle N., Suite 1003, Wichita, KS 67226	Phone 316.734.4933

Group: MyWells Well: Lucas 3-22 (acquired on: 08/27/12 10:21:09)



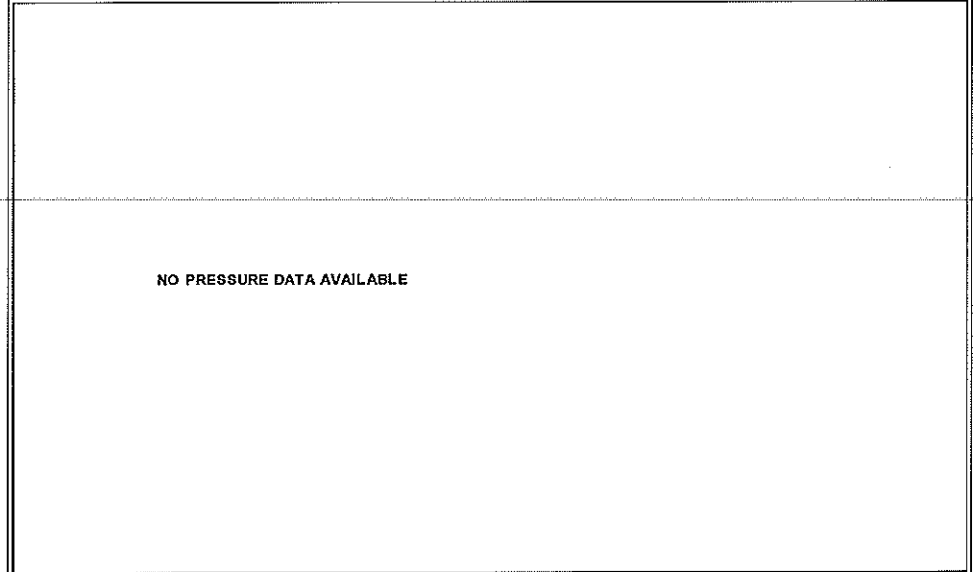
Filter Type High Pass Automatic Collar Count Yes Time 8.26 sec  
 Manual Acoustic Velo 1032.57 ft/s Manual JTS/sec 16.2866 Joints 135.388  
 Depth 4291.81 ft

[ 3.0 to 4.0 (Sec) ]



Analysis Method: Automatic

Group: MyWells Well: Lucas 3-22 (acquired on: 08/27/12 10:21:09)



Change in Pressure 385.22 psi PT 6147  
 Change in Time 2.25 min Range 0 - 7 psi

Group: MyWells Well: Lucas 3-22 (acquired on: 08/27/12 10:21:09)

Production  
 Current Potential  
 Oil - \* - \* - \* - BBL/D  
 Water - \* - \* - \* - BBL/D  
 Gas - \* - \* - \* - Mscf/D

IPR Method Vogel  
 PBHP/SBHP - \* - \*  
 Production Efficiency 0.0

Oil 40 deg.API  
 Water 1.05 Sp.Gr.H2O  
 Gas 0.70 Sp.Gr.AIR

Acoustic Velocity 1039.18 ft/s

Casing Pressure 4360.9 psi (g)  
 Casing Pressure Buildup 385.2 psi  
 2.25 min  
 Gas/Liquid Interface Pressure 4876.1 psi (g)

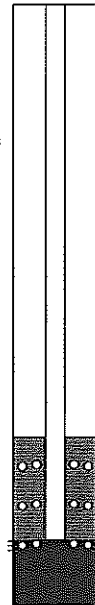
Liquid Level Depth 4291.81 ft

Pump Intake Depth 5493.00 ft

Formation Depth 5558.00 ft

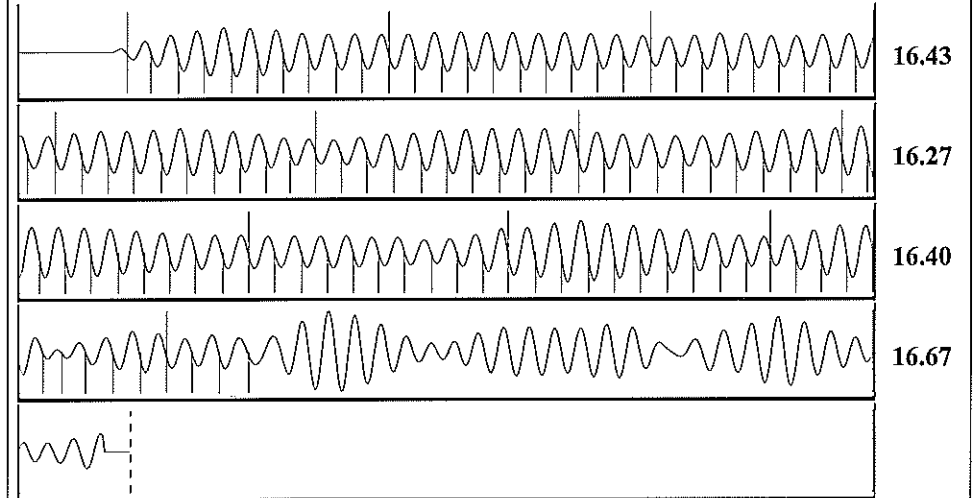
Formation Submergence  
 Total Gaseous Liquid Column HT (TVD) 1201 ft  
 Equivalent Gas Free Liquid HT (TVD) 225 ft

Acoustic Test



Producing  
 Annular Gas Flow 9375 Mscf/D  
 % Liquid 19 %  
 Pump Intake 4923.9 psi (g)  
 Producing BHP 4935.0 psi (g)  
 Static BHP - \* - \* psi (g)

Group: MyWells Well: Lucas 3-22 (acquired on: 08/27/12 10:21:09)



Acoustic Velocity 1039.18 ft/s Joints counted 103  
 Joints Per Second 16.3908 jts/sec Joints to liquid level 135.388  
 Depth to liquid level 4291.81 ft Filter Width 14.2866 18.2866  
 Automatic Collar Count Yes Time to 1st Collar 0.252 6.536