

1090154

Operator Name: _____ Lease Name: _____ Well #: _____

Sec. _____ Twp. _____ S. R. _____ East West County: _____

INSTRUCTIONS: Show important tops of formations penetrated. Detail all cores. Report all final copies of drill stems tests giving interval tested, time tool open and closed, flowing and shut-in pressures, whether shut-in pressure reached static level, hydrostatic pressures, bottom hole temperature, fluid recovery, and flow rates if gas to surface test, along with final chart(s). Attach extra sheet if more space is needed.

Final Radioactivity Log, Final Logs run to obtain Geophysical Data and Final Electric Logs must be emailed to kcc-well-logs@kcc.ks.gov. Digital electronic log files must be submitted in LAS version 2.0 or newer AND an image file (TIFF or PDF).

Drill Stem Tests Taken <i>(Attach Additional Sheets)</i>	<input type="checkbox"/> Yes <input type="checkbox"/> No	<input type="checkbox"/> Log	Formation (Top), Depth and Datum	<input type="checkbox"/> Sample
Samples Sent to Geological Survey	<input type="checkbox"/> Yes <input type="checkbox"/> No	Name	Top	Datum
Cores Taken	<input type="checkbox"/> Yes <input type="checkbox"/> No			
Electric Log Run	<input type="checkbox"/> Yes <input type="checkbox"/> No			
List All E. Logs Run:				

CASING RECORD <input type="checkbox"/> New <input type="checkbox"/> Used							
Report all strings set-conductor, surface, intermediate, production, etc.							
Purpose of String	Size Hole Drilled	Size Casing Set (In O.D.)	Weight Lbs. / Ft.	Setting Depth	Type of Cement	# Sacks Used	Type and Percent Additives

ADDITIONAL CEMENTING / SQUEEZE RECORD				
Purpose:	Depth Top Bottom	Type of Cement	# Sacks Used	Type and Percent Additives
<input type="checkbox"/> Perforate				
<input type="checkbox"/> Protect Casing				
<input type="checkbox"/> Plug Back TD				
<input type="checkbox"/> Plug Off Zone				

Did you perform a hydraulic fracturing treatment on this well? Yes No *(If No, skip questions 2 and 3)*

Does the volume of the total base fluid of the hydraulic fracturing treatment exceed 350,000 gallons? Yes No *(If No, skip question 3)*

Was the hydraulic fracturing treatment information submitted to the chemical disclosure registry? Yes No *(If No, fill out Page Three of the ACO-1)*

Shots Per Foot	PERFORATION RECORD - Bridge Plugs Set/Type Specify Footage of Each Interval Perforated	Acid, Fracture, Shot, Cement Squeeze Record <i>(Amount and Kind of Material Used)</i>	Depth

TUBING RECORD: Size: _____ Set At: _____ Packer At: _____ Liner Run: Yes No

Date of First, Resumed Production, SWD or ENHR: _____ Producing Method: Flowing Pumping Gas Lift Other *(Explain)* _____

Estimated Production Per 24 Hours	Oil Bbls.	Gas Mcf	Water Bbls.	Gas-Oil Ratio	Gravity

DISPOSITION OF GAS: <input type="checkbox"/> Vented <input type="checkbox"/> Sold <input type="checkbox"/> Used on Lease <i>(If vented, Submit ACO-18.)</i>	METHOD OF COMPLETION: <input type="checkbox"/> Open Hole <input type="checkbox"/> Perf. <input type="checkbox"/> Dually Comp. <input type="checkbox"/> Commingled <i>(Submit ACO-5)</i> <input type="checkbox"/> Other <i>(Specify)</i> _____ <input type="checkbox"/> Other <i>(Specify)</i> _____	PRODUCTION INTERVAL: _____ _____
--	---	---

Conservation Division
Finney State Office Building
130 S. Market, Rm. 2078
Wichita, KS 67202-3802



Phone: 316-337-6200
Fax: 316-337-6211
<http://kcc.ks.gov/>

Mark Sievers, Chairman
Thomas E. Wright, Commissioner

Sam Brownback, Governor

August 09, 2012

Nicholas D. Hess
Cobalt Energy LLC
115 S. BELMONT #12
PO BOX 8037
WICHITA, KS 67208

Re: ACO1
API 15-065-23833-00-00
Lee 'A' 1-12
NW/4 Sec.12-06S-21W
Graham County, Kansas

Dear Production Department:

We are herewith requesting that the Well Completion Form ACO-1 and attached information for the subject well be held confidential for a period of two years.

Should you have any questions or need additional information regarding subject well, please contact our office.

Respectfully,
Nicholas D. Hess



**TRILOBITE
TESTING, INC.**

DRILL STEM TEST REPORT

Cobalt Energy, LLC

7-6-19, Rooks, KS

PO Box 8037
Wichita KS 67208

Brobst A #1-7

Job Ticket: 47086

DST#: 1

ATTN: Robert Hendrix

Test Start: 2012.08.04 @ 14:25:00

GENERAL INFORMATION:

Formation: **Tor-KC "C"**

Deviated: No Whipstock: ft (KB)

Time Tool Opened: 18:25:00

Time Test Ended: 00:35:00

Test Type: Conventional Bottom Hole (Initial)

Tester: Brett Dickinson

Unit No: 59

Interval: 3292.00 ft (KB) To 3380.00 ft (KB) (TVD)

Reference Elevations: 2117.00 ft (KB)

Total Depth: 3380.00 ft (KB) (TVD)

2107.00 ft (CF)

Hole Diameter: 7.88 inches Hole Condition: Fair

KB to GR/CF: 10.00 ft

Serial #: 8369 Inside

Press @ Run Depth: 73.76 psig @ 3293.00 ft (KB)

Capacity: 8000.00 psig

Start Date: 2012.08.04

End Date:

2012.08.05

Last Calib.: 2012.08.05

Start Time: 14:25:05

End Time:

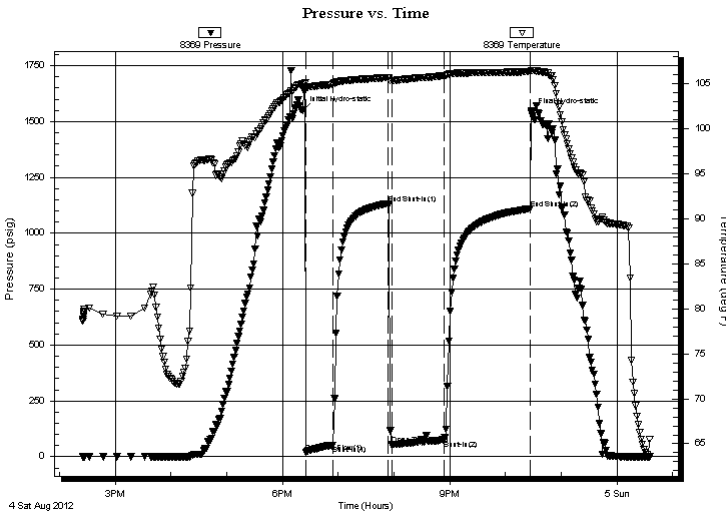
00:35:00

Time On Btm: 2012.08.04 @ 18:21:30

Time Off Btm: 2012.08.04 @ 22:28:00

TEST COMMENT: IF-2.75in blow
IS-No blow
FF-2in blow
FSI-No blow

PRESSURE SUMMARY



Time (Min.)	Pressure (psig)	Temp (deg F)	Annotation
0	1548.17	104.95	Initial Hydro-static
4	21.35	104.59	Open To Flow (1)
33	50.93	104.97	Shut-In(1)
93	1133.44	105.69	End Shut-In(1)
96	53.73	105.36	Open To Flow (2)
152	73.76	105.91	Shut-In(2)
245	1109.72	106.34	End Shut-In(2)
247	1540.26	106.49	Final Hydro-static

Recovery

Length (ft)	Description	Volume (bbl)
114.00	VSOCM 10%O 90%M	1.05
1.00	Free oil	0.01

Gas Rates

Choke (inches)	Pressure (psig)	Gas Rate (Mcf/d)



**TRILOBITE
TESTING, INC.**

DRILL STEM TEST REPORT

FLUID SUMMARY

Cobalt Energy, LLC

7-6-19, Rooks, KS

PO Box 8037
Wichita KS 67208

Brobst A #1-7

Job Ticket: 47086

DST#: 1

ATTN: Robert Hendrix

Test Start: 2012.08.04 @ 14:25:00

Mud and Cushion Information

Mud Type: Gel Chem

Cushion Type:

Oil API:

deg API

Mud Weight: 9.00 lb/gal

Cushion Length:

ft

Water Salinity:

ppm

Viscosity: 52.00 sec/qt

Cushion Volume:

bbbl

Water Loss: 6.40 in³

Gas Cushion Type:

Resistivity: ohm.m

Gas Cushion Pressure:

psig

Salinity: 1100.00 ppm

Filter Cake: inches

Recovery Information

Recovery Table

Length ft	Description	Volume bbl
114.00	VSOCM 10%O 90%M	1.053
1.00	Free oil	0.014

Total Length: 115.00 ft Total Volume: 1.067 bbl

Num Fluid Samples: 0

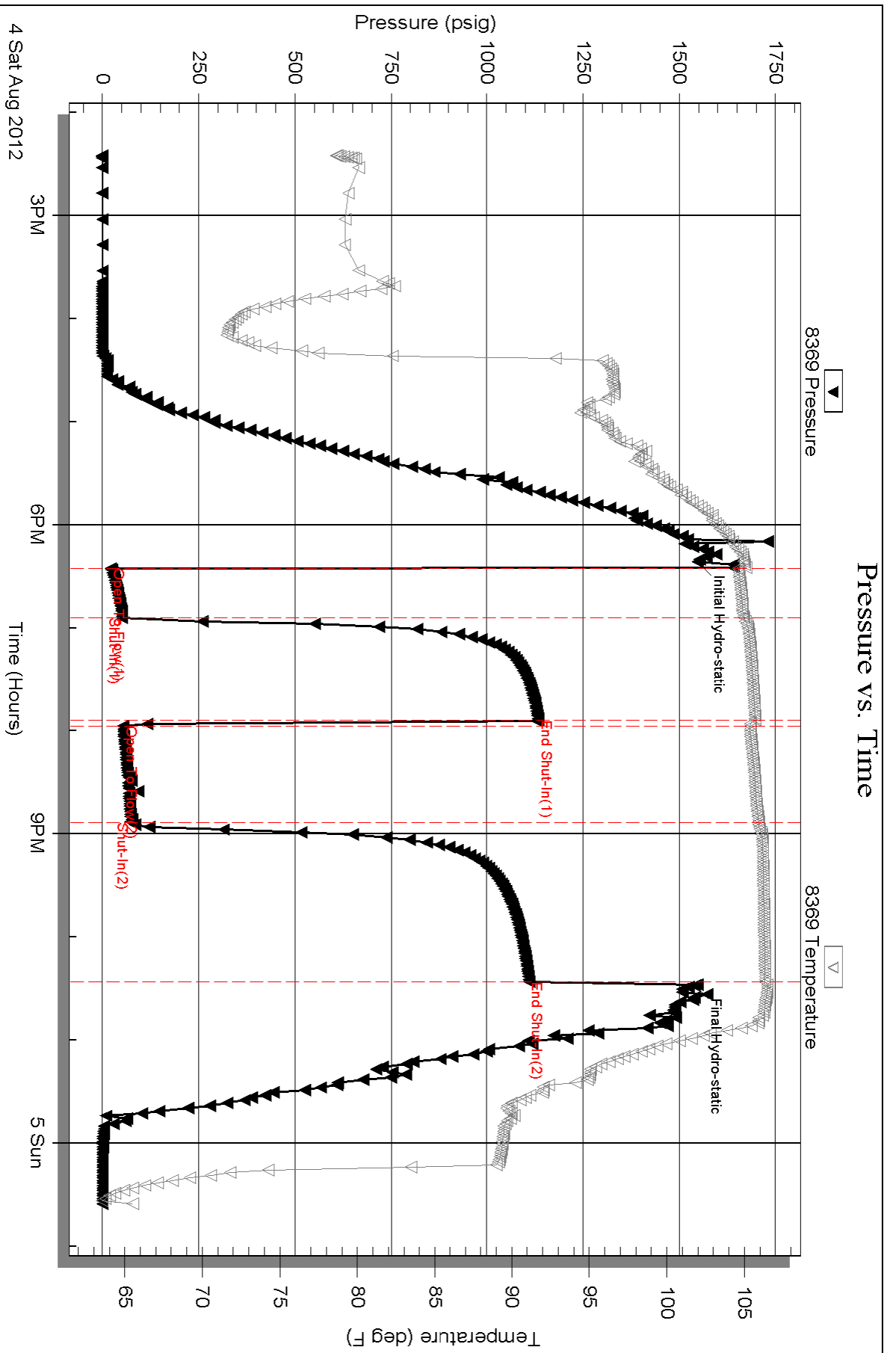
Num Gas Bombs: 0

Serial #:

Laboratory Name:

Laboratory Location:

Recovery Comments:

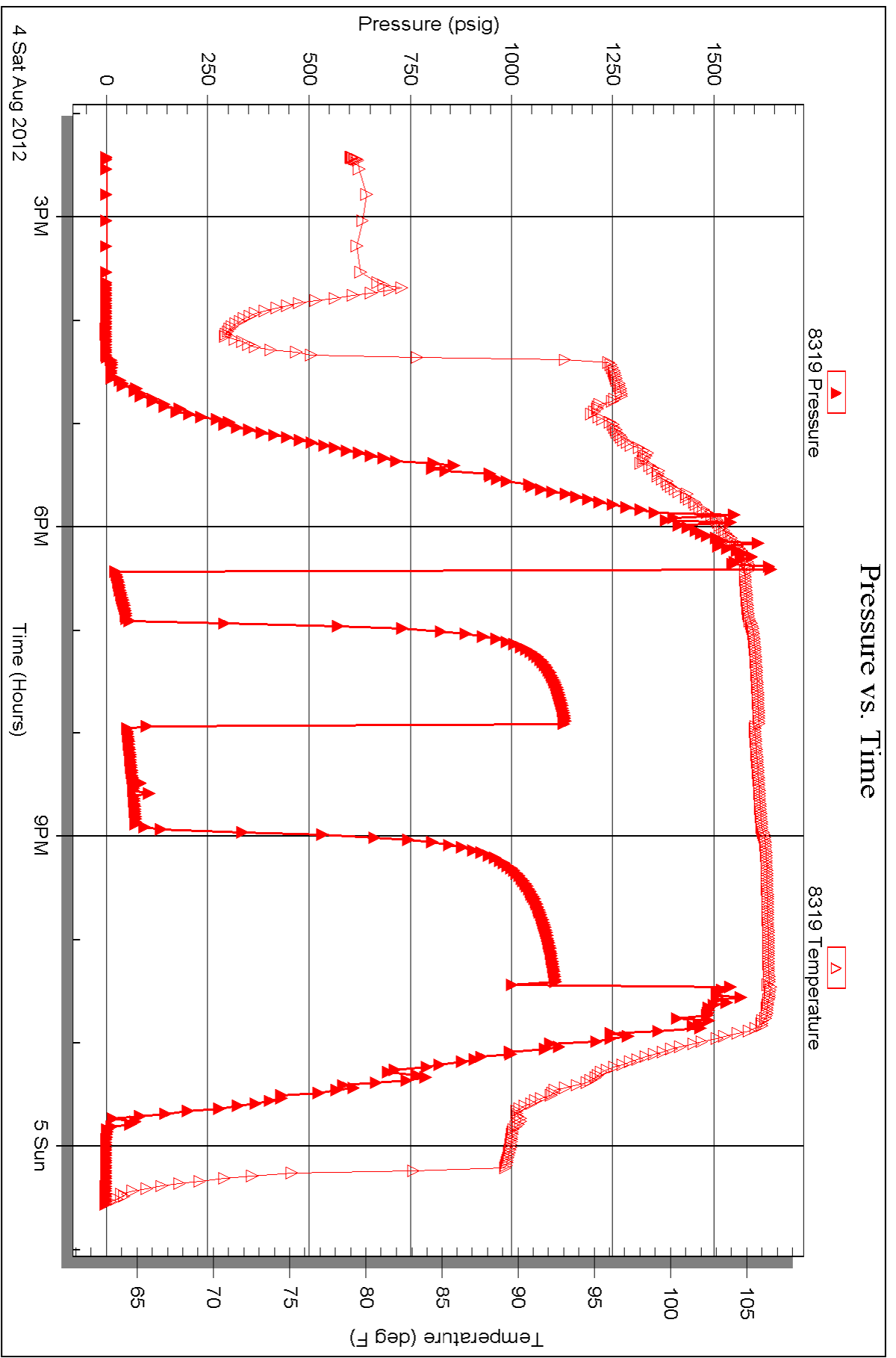


Serial #: 8319

Outside Cobalt Energy, LLC

Brobst A #1-7

DST Test Number: 1





**TRILOBITE
TESTING, INC.**

DRILL STEM TEST REPORT

Cobalt Energy, LLC

7-6-19, Rooks, KS

PO Box 8037
Wichita KS 67208

Brobst A #1-7

Job Ticket: 47087

DST#: 2

ATTN: Robert Hendrix

Test Start: 2012.08.05 @ 10:10:00

GENERAL INFORMATION:

Formation: **LANS E-F**

Deviated: No Whipstock: ft (KB)

Time Tool Opened: 12:12:30

Time Test Ended: 16:59:00

Test Type: Conventional Bottom Hole (Initial)

Tester: RANDY WILLIAMS

Unit No: 59

Interval: 3398.00 ft (KB) To 3420.00 ft (KB) (TVD)

Reference Elevations: 2117.00 ft (KB)

Total Depth: 3420.00 ft (KB) (TVD)

2107.00 ft (CF)

Hole Diameter: 7.88 inches Hole Condition: Fair

KB to GR/CF: 10.00 ft

Serial #: 8369

Press @ Run Depth: 19.14 psig @ ft (KB)

Capacity: 8000.00 psig

Start Date: 2012.08.05

End Date: 2012.08.05

Last Calib.: 2012.08.05

Start Time: 10:10:05

End Time: 16:58:59

Time On Btm: 2012.08.05 @ 12:12:00

Time Off Btm: 2012.08.05 @ 14:46:30

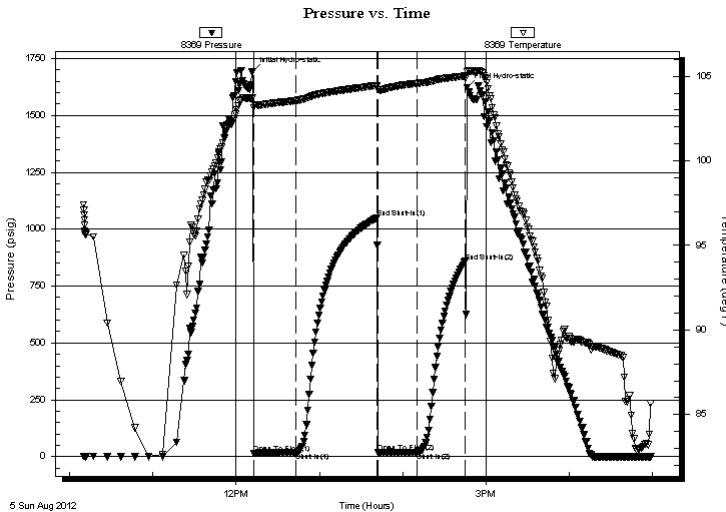
TEST COMMENT: IF - WEAK SURFACE BLOW

ISI - NBB

FF - NO BLOW

FSI - NBB

PRESSURE SUMMARY



Time (Min.)	Pressure (psig)	Temp (deg F)	Annotation
0	1693.47	103.72	Initial Hydro-static
1	15.67	103.16	Open To Flow (1)
31	17.28	103.57	Shut-In(1)
89	1048.58	104.45	End Shut-In(1)
90	18.43	104.21	Open To Flow (2)
119	19.14	104.58	Shut-In(2)
153	858.38	105.01	End Shut-In(2)
155	1621.40	105.27	Final Hydro-static

Recovery

Length (ft)	Description	Volume (bbl)
3.00	MUD CUT OIL 1%-O, 99%-M	0.01

Gas Rates

Choke (inches)	Pressure (psig)	Gas Rate (Mcf/d)



TRILOBITE TESTING, INC.

DRILL STEM TEST REPORT

Cobalt Energy, LLC

7-6-19, Rooks, KS

PO Box 8037
Wichita KS 67208

Brobst A #1-7

Job Ticket: 47087

DST#: 2

ATTN: Robert Hendrix

Test Start: 2012.08.05 @ 10:10:00

GENERAL INFORMATION:

Formation: **LANS E-F**

Deviated: No Whipstock: ft (KB)

Time Tool Opened: 12:12:30

Time Test Ended: 16:59:00

Test Type: Conventional Bottom Hole (Initial)

Tester: RANDY WILLIAMS

Unit No: 59

Interval: 3398.00 ft (KB) To 3420.00 ft (KB) (TVD)

Reference Elevations: 2117.00 ft (KB)

Total Depth: 3420.00 ft (KB) (TVD)

2107.00 ft (CF)

Hole Diameter: 7.88 inches Hole Condition: Fair

KB to GR/CF: 10.00 ft

Serial #: 8319 Inside

Press @ Run Depth: psig @ 3402.00 ft (KB)

Capacity: 8000.00 psig

Start Date: 2012.08.05

End Date:

2012.08.05

Last Calib.:

1899.12.30

Start Time: 10:10:05

End Time:

16:58:59

Time On Btm:

Time Off Btm:

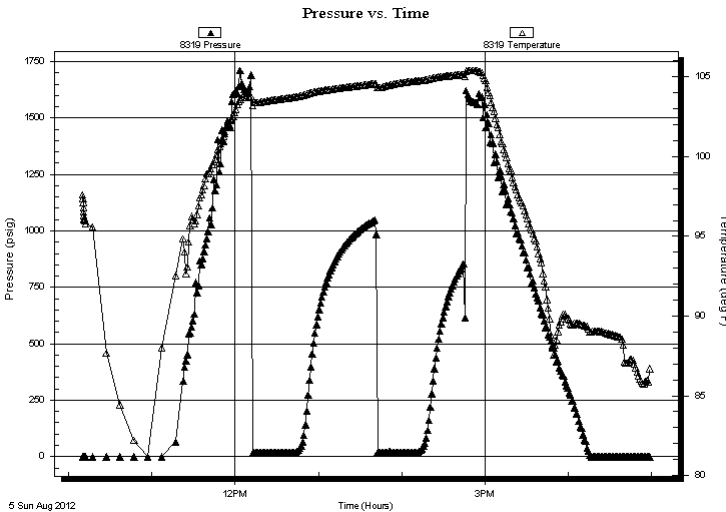
TEST COMMENT: IF - WEAK SURFACE BLOW

ISI - NBB

FF - NO BLOW

FSI - NBB

PRESSURE SUMMARY



Time (Min.)	Pressure (psig)	Temp (deg F)	Annotation

Recovery

Length (ft)	Description	Volume (bbl)
3.00	MUD CUT OIL 1%-O, 99%-M	0.01

Gas Rates

Choke (inches)	Pressure (psig)	Gas Rate (Mcf/d)



**TRILOBITE
TESTING, INC.**

DRILL STEM TEST REPORT

FLUID SUMMARY

Cobalt Energy, LLC

7-6-19, Rooks, KS

PO Box 8037
Wichita KS 67208

Brobst A #1-7

Job Ticket: 47087

DST#: 2

ATTN: Robert Hendrix

Test Start: 2012.08.05 @ 10:10:00

Mud and Cushion Information

Mud Type: Gel Chem

Cushion Type:

Oil API:

deg API

Mud Weight: 9.00 lb/gal

Cushion Length: ft

Water Salinity: ppm

Viscosity: 54.00 sec/qt

Cushion Volume: bbl

Water Loss: 6.79 in³

Gas Cushion Type:

Resistivity: ohm.m

Gas Cushion Pressure: psig

Salinity: 1100.00 ppm

Filter Cake: 1.00 inches

Recovery Information

Recovery Table

Length ft	Description	Volume bbl
3.00	MUD CUT OIL 1%-O, 99%-M	0.015

Total Length: 3.00 ft Total Volume: 0.015 bbl

Num Fluid Samples: 0

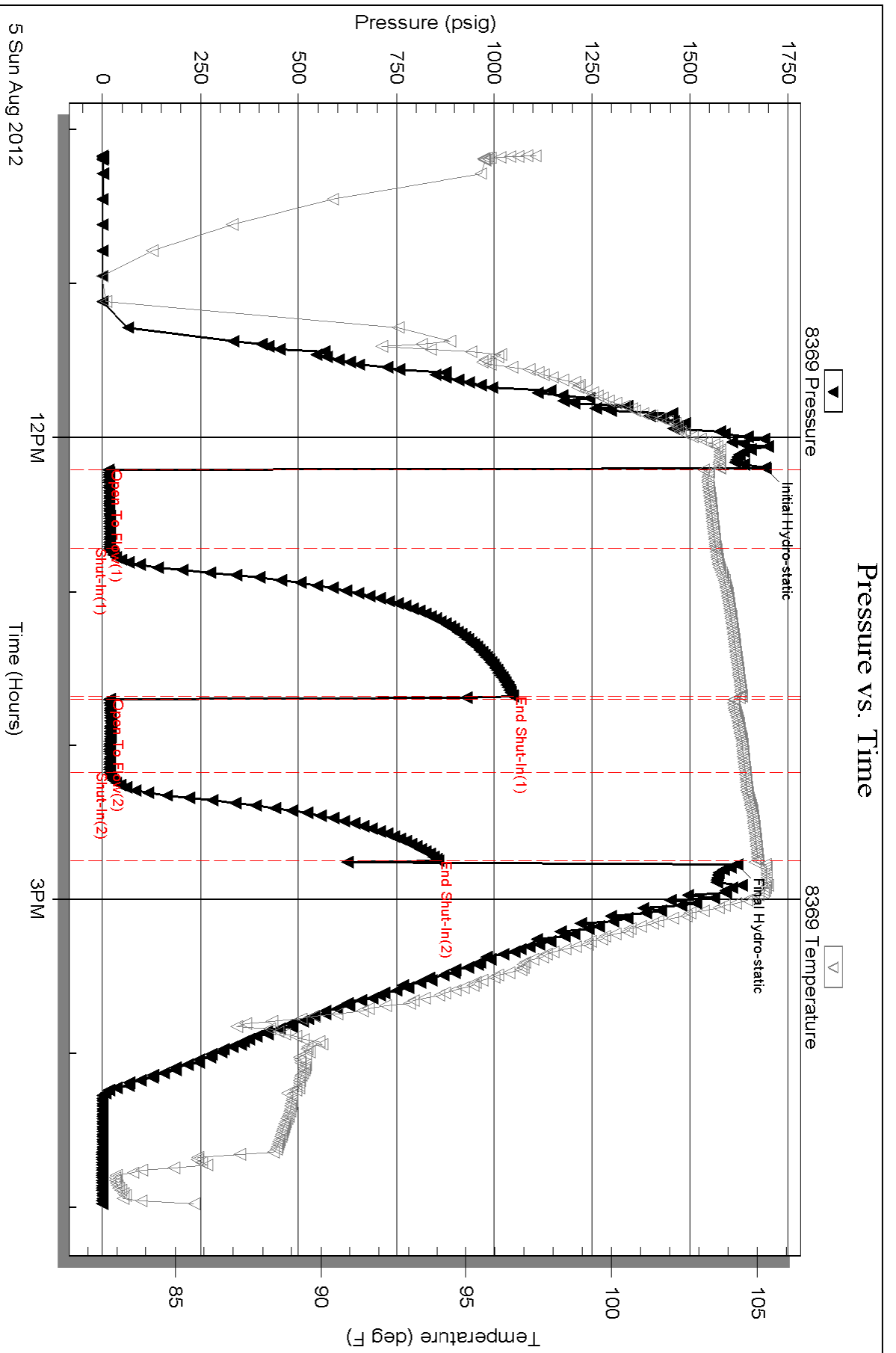
Num Gas Bombs: 0

Serial #:

Laboratory Name:

Laboratory Location:

Recovery Comments:



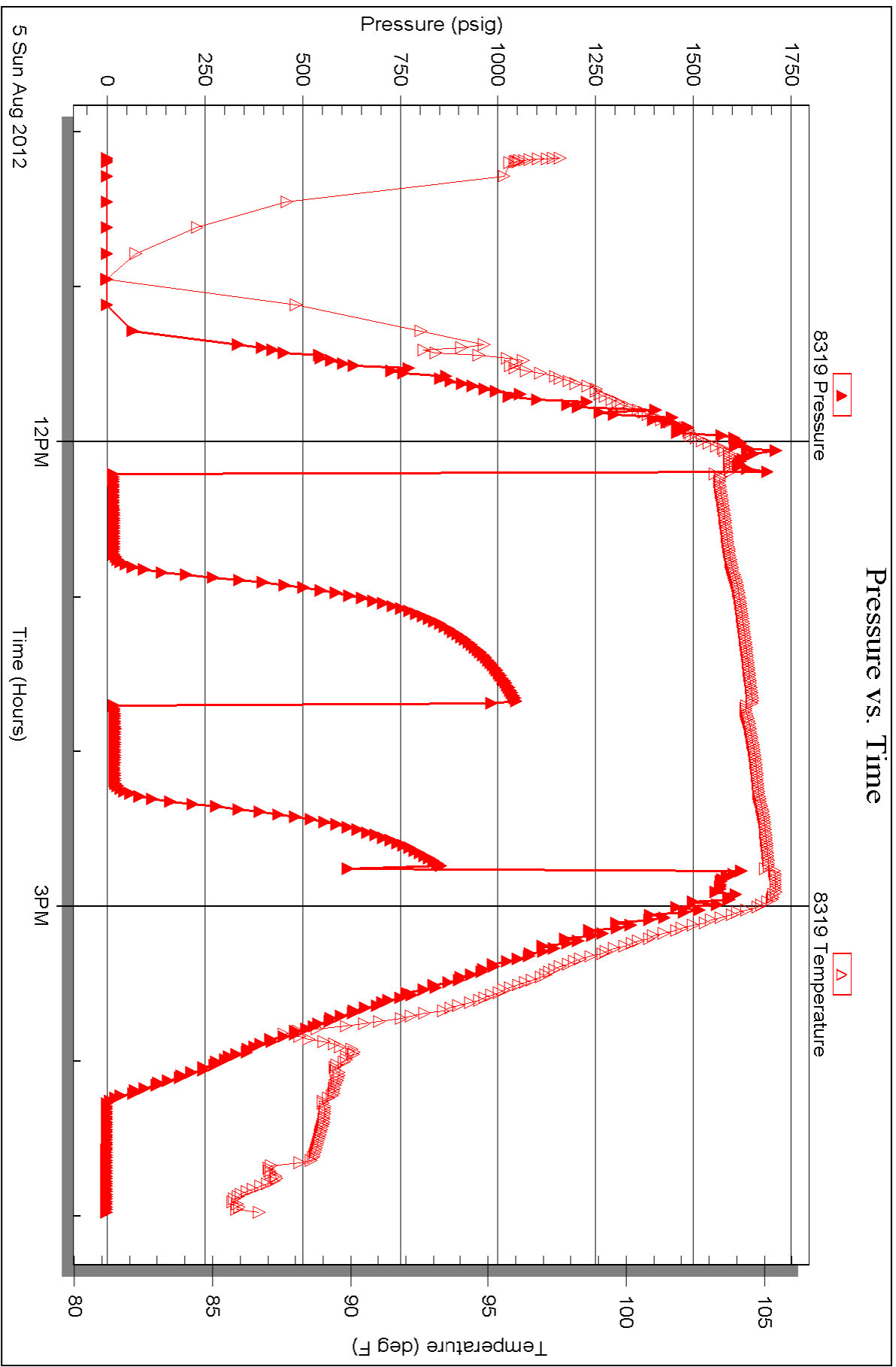
Serial #: 8319

Inside

Cobalt Energy, LLC

Brobst A #1-7

DST Test Number: 2





TRILOBITE TESTING, INC.

DRILL STEM TEST REPORT

Cobalt Energy, LLC

7-6-19, Rooks, KS

PO Box 8037
Wichita KS 67208

Brobst A #1-7

Job Ticket: 47088

DST#: 3

ATTN: Robert Hendrix

Test Start: 2012.08.06 @ 08:30:00

GENERAL INFORMATION:

Formation: **LKC - H,I,J**

Deviated: No Whipstock: ft (KB)

Time Tool Opened: 10:30:30

Time Test Ended: 14:10:30

Test Type: Conventional Bottom Hole (Initial)

Tester: Randy Williams

Unit No: 59

Interval: 3447.00 ft (KB) To 3520.00 ft (KB) (TVD)

Reference Elevations: 2117.00 ft (KB)

Total Depth: 3520.00 ft (KB) (TVD)

2107.00 ft (CF)

Hole Diameter: 7.88 inches Hole Condition: Fair

KB to GR/CF: 10.00 ft

Serial #: 8369 Outside

Press @ Run Depth: 37.30 psig @ 3482.00 ft (KB)

Capacity: 8000.00 psig

Start Date: 2012.08.06

End Date:

2012.08.06

Last Calib.:

2012.08.06

Start Time:

08:30:05

End Time:

14:10:29

Time On Btm:

2012.08.06 @ 10:30:00

Time Off Btm:

2012.08.06 @ 12:31:00

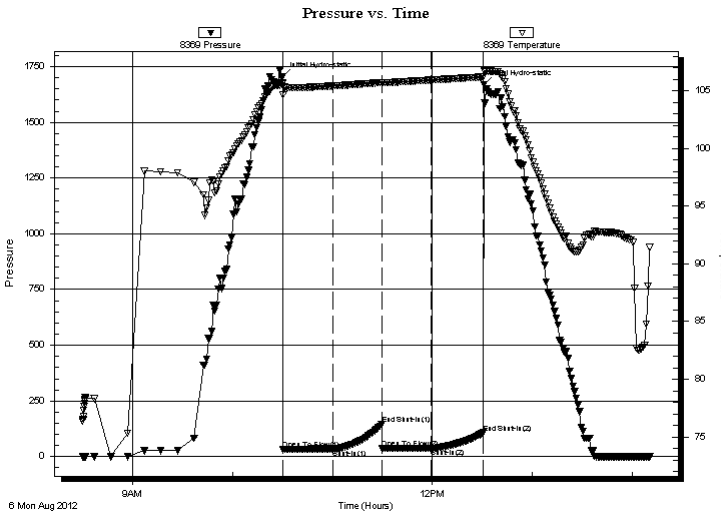
TEST COMMENT: IF - Weak 1/8 Blow died in 29 min

ISI - NBB

FF - No Blow

FSI - NBB

PRESSURE SUMMARY



Time (Min.)	Pressure (psig)	Temp (deg F)	Annotation
0	1706.60	105.65	Initial Hydro-static
1	32.85	104.64	Open To Flow (1)
31	35.16	105.42	Shut-In(1)
60	145.15	105.71	End Shut-In(1)
60	36.10	105.65	Open To Flow (2)
90	37.30	105.93	Shut-In(2)
121	106.68	106.19	End Shut-In(2)
121	1668.76	106.76	Final Hydro-static

Recovery

Length (ft)	Description	Volume (bbl)
2.00	OCM, 1% O , 99% M	0.01

Gas Rates

	Choke (inches)	Pressure (psig)	Gas Rate (Mcf/d)



**TRILOBITE
TESTING, INC.**

DRILL STEM TEST REPORT

FLUID SUMMARY

Cobalt Energy, LLC

7-6-19, Rooks, KS

PO Box 8037
Wichita KS 67208

Brobst A #1-7

Job Ticket: 47088

DST#: 3

ATTN: Robert Hendrix

Test Start: 2012.08.06 @ 08:30:00

Mud and Cushion Information

Mud Type: Gel Chem

Cushion Type:

Oil API:

deg API

Mud Weight: 9.00 lb/gal

Cushion Length:

ft

Water Salinity:

ppm

Viscosity: 57.00 sec/qt

Cushion Volume:

bbbl

Water Loss: 7.20 in³

Gas Cushion Type:

Resistivity: ohm.m

Gas Cushion Pressure:

psig

Salinity: 1100.00 ppm

Filter Cake: 1.00 inches

Recovery Information

Recovery Table

Length ft	Description	Volume bbl
2.00	OCM, 1% O , 99% M	0.010

Total Length: 2.00 ft Total Volume: 0.010 bbl

Num Fluid Samples: 0

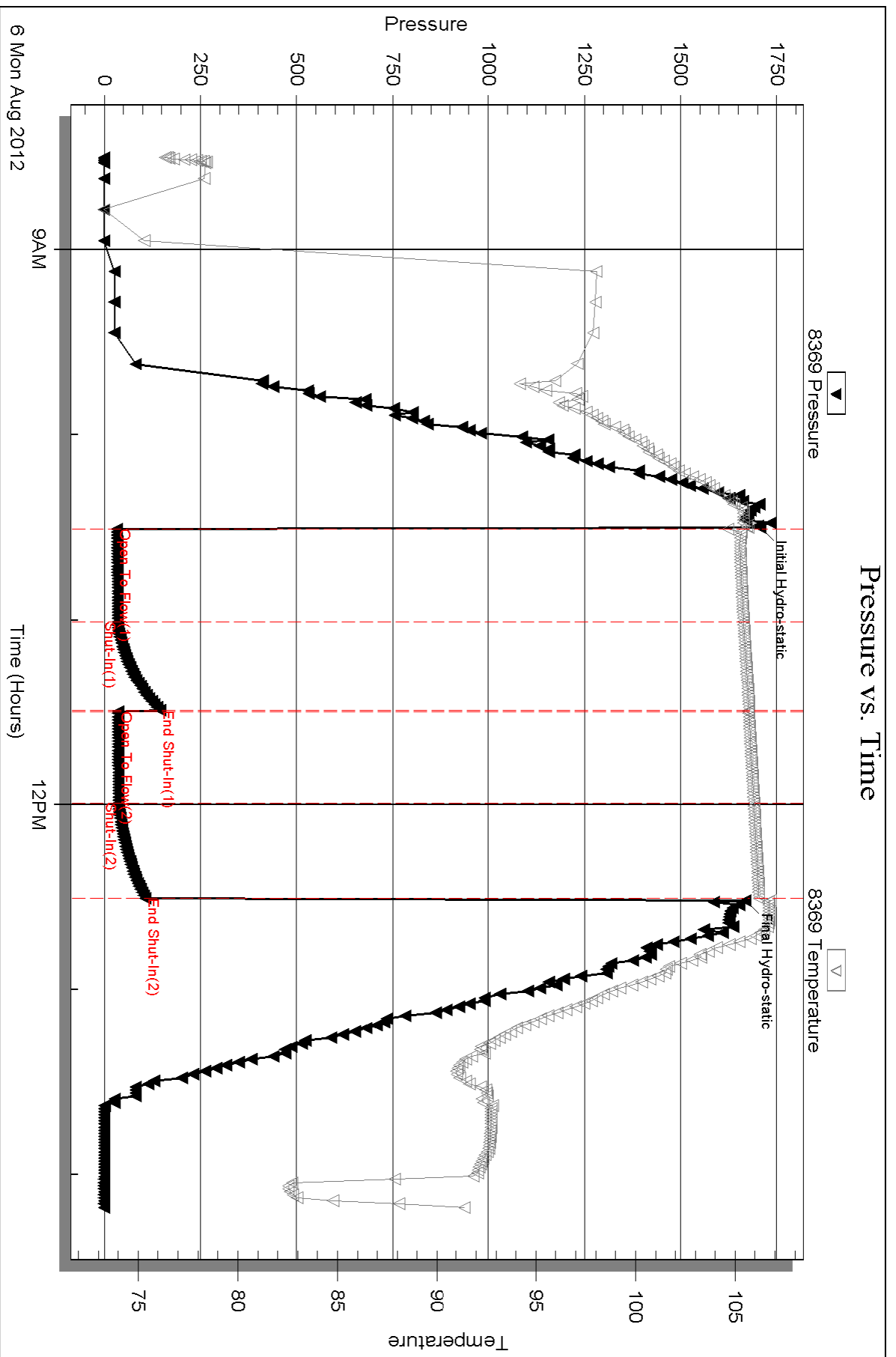
Num Gas Bombs: 0

Serial #:

Laboratory Name:

Laboratory Location:

Recovery Comments:



Robert D. Hendrix

Petroleum Geologist

GEOLOGIST'S REPORT DRILLING TIME AND SAMPLE LOG

COMPANY **Cobalt Energy LLC**

LEASE **Lee "A" #1-12**

FIELD **Wildcat**

LOCATION **771' fml & 1707' fwl**

SEC **12** TWP **6 s** RGE **21 w**

COUNTY **Graham** STATE **Kansas**

CONTRACTOR **Val Energy Inc. Rig #3**

SPUD **7/18/2012** COMP **7/27/2012**

RTD **3540** LTD **3541**

MUD UP **2773'** TYPE MUD **Chemical**

SAMPLES SAVED FROM **3100** TO **TD**

DRILLING TIME KEPT FROM **3100** TO **TD**

SAMPLES EXAMINED FROM **3100** TO **TD**

GEOLOGICAL SUPERVISION FROM **3200**

GEOLOGIST ON WELL **Robert D. Hendrix**

FORMATION TOPS

ELECTRIC LOG

SAMPLE

Anhydrite **1668 (+468)**

Base Anhydrite **1698 (+438)**

Heebner Sh. **3239 (-1103)**

Lansing **3284 (-1148)**

Stark Sh. **3446 (-1310)**

BKC **3472 (-1338)**

Granite **3514 (-1378)**

ELEVATIONS

KB **2136'**

DF _____

GL **2126'**

Measurements Are All From **Kelly Bushing**

CASING

CONDUCTOR _____

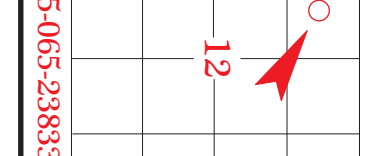
SURFACE **8-5/8" at 392'**

PRODUCTION **X**

ELECTRICAL SURVEYS

Reg Log _____

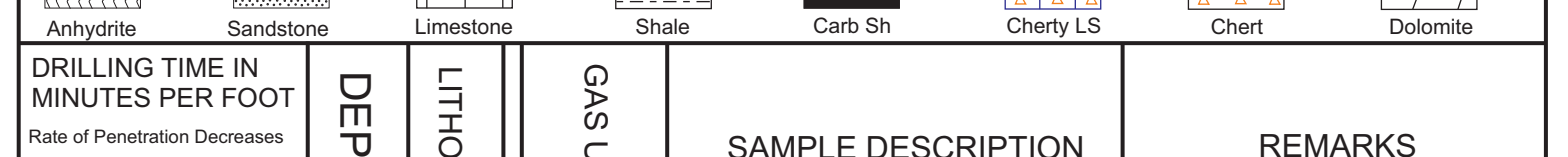
Log Tech _____



REMARKS: *All pertinent shows were tested and after further log examination the decision was made to plug and abandon this hole.*

Respectfully Submitted
Robert D Hendrix

LEGEND



DEPTH	LITHOLOGY	GAS UNITS	SAMPLE DESCRIPTION	REMARKS
1650	Anhydrite			Anhydrite 1668 (+468)
1700	Base Anhydrite			Base Anhydrite 1698 (+438)
1750				
3100	Limestone		Limestone: white to tan, f-mxn, sl chalky, v cherty, sl fossiliferous, pr interxln por, ns Limestone: white to tan, fxln, sl fossiliferous, pr vug por, ns Shale: gray, black	DST #1 3247-3275 30-60-60-90 1st open: weak blow built to 3" then died back to 2 1/4" 2nd open: weak blow built to 1/2" Rec: 72' slomc 5/95 hydro: 1577-1563 psi lf: 43-59 psi ff: 63-68 psi sip: 706-596 psi bht: 106° F
50			Limestone: white, fxln, sl cherty, fossiliferous, pr interxln por, fr dark spotty to sat stain, slsfo on break, no odor Shale: gray, black, red	
3200			Shale: gray, green, black, red Shale: gray, black, red Limestone: white to tan, fxln, sl chalky, sl fossiliferous, no vis por Limestone: white to tan, fxln, sl chalky, sl cherty, oolitic in part, fossiliferous, no vis por Shale: gray, green, red Limestone: white to tan, fxln, fossiliferous, no por, ns Shale: gray, green, red	DST #2 3187-3230 (straddle) 30-60-60-90 1st open: weak blow built to 2 1/2" 2nd open: weak blow built to 3" Rec: 77' vslocm 2/98 hydro: 1558-1530 psi lf: 28-53 psi ff: 51-74 psi sip: 960-941 psi bht: 106° F
			Limestone: white to tan, fxln, sl cherty, fossiliferous, 3 pieces, fr interxln por, fr dark spotty dark stain, fr sfo on break, fr odor Limestone: white to tan, fxln, fossiliferous, pr interxln por, ns Limestone: white to tan, fxln, fossiliferous, pr interxln por, ns	Geologist on location 3200' at 1:01 Am 7/23/2012
			Shale: black, carbonaceous Limestone: brown, fxln, fossiliferous, pelltoidal, no vis por, ns Shale: gray, green, red, black	Heebner 3239 (-1103)
			Shale: gray, green, red, black Limestone: white, fxln, sl cherty, fossiliferous, gd interxln por, 10% of sample, spotty dark stain, sl sfg, faint odor Limestone: white, fxln, sl cherty, sl chalky, fossiliferous, no vis por, ns Shale: gray, green, red	wt 9.1, vis. 44, lcm 4# Mud-Co, Tyler Lang 8:00am, 7/23/2012
			Limestone: white, fxln, sl chalky, fossiliferous, sl interxln por, 2% of sample, spotty dark stain, sl sfo on break, no odor Limestone: white, fxln, sl chalky, sl cherty, fossiliferous, no vis por, ns	Lansing 3280 (-1144) 8:00am, 7/24/2012
			Shale: gray, green, red, black	
			Limestone: white, f-mxn, oolitic, fossiliferous, fr oolitic por, some barren, 5% of sample lt spotty stain, 2 pieces with vsf sfo on break, no odor Shale: gray, green, red	wt 9.1, vis. 47, lcm 3# Mud-Co, Gary Schmidtberger
			Limestone: white to tan, fxln, cherty, pr interxln por, 5% of sample, lt spotty to sat stain, sl sfo on break, no odor Limestone: white to tan, f-mxn, cherty, fossiliferous, fr interxln por, 10% of sample, lt spotty to sat stain, sl sfo with more on on break, no odor Shale: gray, green, red, black	8:00am, 7/25/2012 wt 9.1, vis. 47, lcm 3# Mud-Co, Gary Schmidtberger
			Limestone: white, f-mxn, oolitic, fossiliferous, fr oolitic por, some barren, 5% of sample lt spotty stain, 2 pieces with vsf sfo on break, no odor Shale: gray, green, red	DST #3 3271-3305 30-60-30-30 1st open: weak blow built to 1/2" 2nd open: no blow Rec: 7' m-w-os hydro: 1576-1570 psi lf: 26-30 psi ff: 34-33 psi sip: 646-535 psi bht: 103° F
			Limestone: white to tan, fxln, cherty, pr interxln por, 5% of sample, lt spotty to sat stain, sl sfo on break, no odor Limestone: white to tan, f-mxn, cherty, fossiliferous, fr interxln por, 10% of sample, lt spotty to sat stain, sl sfo with more on on break, no odor Shale: gray, green, red, black	
			Limestone: white, fxln, cherty, no vis por, ns Shale: gray, red, black	wt 9.1, vis. 47, lcm 3# Mud-Co, Gary Schmidtberger
			Limestone: white to tan, fxln, sl chalky, 2% sample no vis por, lt sat stain, nfo, no odor Limestone: white, fxln, sl chalky, 1% sample no vis por, lt sat stain, nfo, no odor Limestone: white, fxln, sl chalky, soft, 3% sample no vis por, lt sat stain, vsf sfo on break, faint odor	Stark Sh. 3447 (-1311)
			Shale: black, dark gray Shale: gray, red, black	
			Limestone: white, f-mxn, chalky, sl cherty, fossiliferous oolitic in part, no vis por, 12 pieces with dark spotty stain, nfo, no odor Limestone: white, fxln, chalky, sl cherty, no vis por, ns	BKC 3474 (-1338)
			Shale: gray, red Shale: gray, red	
			Limestone: white to tan, f-mxn, chalky, oolitic, fossiliferous, no vis por, ns Shale: gray, red, black	Granite 3515 (-1379)
			Shale: gray, red, black	
			Granite: orange, transparent, black, feldspathic biotitic, no vis por, ns	RTD 3540 (-1404)
				Geologist off location at 5:30am 7/27/2012
				DST #4 3298-3330 30-60-60-60 1st open: BOB in 9 1/2 min 2nd open: BOB 23 min Rec: 613' water 196' mw 30/70 hydro: 1594-1527 psi lf: 31-195 psi ff: 198-390 psi sip: 968-958 psi bht: 109° F chl: 51,000 api rw .117 @ 93.2° F
				DST #5 3342-3393 30-60-30-30 1st open: weak blow built to 2 1/2" 2nd open: weak surface died 15 min Rec: 86' m-w-scum of oil hydro: 1610-1600 psi lf: 56-64 psi ff: 75-75 psi sip: 1065-968 psi bht: 106° F



CONSOLIDATED
ON Well Services, LLC

PO Box 884, Chanute, KS 66720
620-431-9210 or 800-467-8676

TICKET NUMBER 37005
LOCATION Oakley 6
FOREMAN Mitsko

FIELD TICKET & TREATMENT REPORT
CEMENT

KS

DATE	CUSTOMER #	WELL NAME & NUMBER	SECTION	TOWNSHIP	RANGE	COUNTY
7-19-12	2180	Lee "A" #1-12	12	6S	21W	Graham
CUSTOMER Colbalt			Bogue 11 1/2" 1130 3E 1145 Estinto			
MAILING ADDRESS			TRUCK #	DRIVER	TRUCK #	DRIVER
CITY			452 T118	Damon m		
STATE			506	WIS P		
ZIP CODE						

JOB TYPE Surface HOLE SIZE 12 1/4 HOLE DEPTH 400 CASING SIZE & WEIGHT 8 5/8 x 24 #
 CASING DEPTH 395.31 DRILL PIPE _____ TUBING _____ OTHER _____
 SLURRY WEIGHT 14.8 SLURRY VOL 1.36 WATER gal/sk _____ CEMENT LEFT in CASING 20'
 DISPLACEMENT 23 1/2 bbls DISPLACEMENT PSI _____ MIX PSI _____ RATE 4 1/2 bbl

REMARKS: Safety Meeting & Rig up Val Rig #3 Run casing load Plug in Plus cement
mix 250 lbs Common + 38 cement + 28 gal Released Plug displaced
23 1/2 bbls water shut in Cement did circulate Approx 10 bbls to bit

Thank Mitsko & crew

ACCOUNT CODE	QUANTITY or UNITS	DESCRIPTION of SERVICES or PRODUCT	UNIT PRICE	TOTAL
5401S	1	PUMP CHARGE	1085. ⁰⁰	1085. ⁰⁰
5407	55	MILEAGE	5. ⁰⁰	275. ⁰⁰
5407A	11.75	Ton mileage delivery	1.67	1079. ⁶⁵
1104S	250 lbs	250 lbs Common Class A	17.65	4412.50
1102	705	Calcium Chloride	1.89	627.45
111PB	470	Bentonite gel	1.25	117.50
4432	1	8 5/8 wooden plug	96. ⁰⁰	96. ⁰⁰
			Subtotal	7693. ¹⁰
			less 10% discount	769.32
				6923.78
			SALES TAX	356.97
			ESTIMATED TOTAL	7280.75

Completed

Revin 3737

AUTHORIZATION circulation TITLE _____ DATE 7-19-12

I acknowledge that the payment terms, unless specifically amended in writing on the front of the form or in the customer's account records, at our office, and conditions of service on the back of this form are in effect for services identified on this form

251381



CONSOLIDATED
Oil Well Services, LLC

PO Box 884, Chanute, KS 66720
620-431-9210 or 800-467-8676

TICKET NUMBER 37008
LOCATION Oakley KS
FOREMAN Miles Shaw
Joe Blanchard

FIELD TICKET & TREATMENT REPORT
CEMENT

KS

DATE	CUSTOMER #	WELL NAME & NUMBER	SECTION	TOWNSHIP	RANGE	COUNTY
7-27-12	2180	Lee "A" #1-12	12	6S	21W	Graham
CUSTOMER <u>Colbalt Energy</u>			TRUCK #	DRIVER	TRUCK #	DRIVER
MAILING ADDRESS			<u>452 TIR</u>	<u>Bobby S</u>		
CITY			<u>460</u>	<u>Joe B/</u>		
STATE						
ZIP CODE						

JOB TYPE DTA HOLE SIZE 7 1/8 HOLE DEPTH _____ CASING SIZE & WEIGHT _____
 CASING DEPTH _____ DRILL PIPE 1682 TUBING _____ OTHER _____
 SLURRY WEIGHT _____ SLURRY VOL _____ WATER gal/sk _____ CEMENT LEFT in CASING _____
 DISPLACEMENT _____ DISPLACEMENT PSI _____ MIX PSI _____ RATE _____

REMARKS: Safety Meeting + Rig upon Val #3 Plus as orders
1st plug 255 sks @ 1682'
2nd plug 100 sks @ 1020'
3rd plug 70 sks @ 445' 220 sks 60/40 poz 48 gal 1/4" flt
Top plug 10 sks @ 40' with plug
RH 30 sks MH 15 sks

Thanks Miles & crew

ACCOUNT CODE	QUANTITY or UNITS	DESCRIPTION of SERVICES or PRODUCT	UNIT PRICE	TOTAL
5405 N	1	PUMP CHARGE	1325. ⁰⁰	1325. ⁰⁰
5406	55	MILEAGE	5. ⁰⁰	275. ⁰⁰
5407 A	9.46	Ton mileage delivery	1.67	869. ⁰⁰
1131	220 SKS	60/40 poz cement	15.10	3322. ⁰⁰
1118B	757 #	Bentonite gel	.25	189.25
1107	55 #	Flu seal	2.82	155. ⁹⁰
4432	1	8 5/8 wooden plug	96. ⁰⁰	96. ⁰⁰
			Subtotal	6231.35
			less 10% discount	6231.4
			Subtotal	5608.21
			SALES TAX	255.65
			ESTIMATED TOTAL	5863.86

Completed

Ravin 3737

AUTHORIZATION Mitchell W TITLE _____ DATE _____

I acknowledge that the payment terms, unless specifically amended in writing on the front of the form or in the customer's account records, at our office, and conditions of service on the back of this form are in effect for services identified on this form.

251641