

OPERATOR

Company: STELBAR OIL CORPORATION, INC.
 Address: 1625 N. WATERFRONT PARKWAY, #200
 WICHITA, KS 67206-6602

Contact Geologist: KENT SCRIBNER
 Contact Phone Nbr: 316-264-8374
 Well Name: BIRD #1-17
 Location: 441' FSL, 2174 FWL, SEC 17-29S-41W API: 15-187-21207-0000
 Pool: DRY AND ABANDONED Field: ARROYO
 State: KANSAS Country: STANTON

Scale 1:240 Imperial

Well Name: BIRD #1-17
 Surface Location: 441' FSL, 2174 FWL, SEC 17-29S-41W
 Bottom Location:
 API: 15-187-21207-0000
 License Number:
 Spud Date: 7/5/2012 Time: 3:00 AM
 Region: SW KANSAS
 Drilling Completed: 7/11/2012 Time: 11:45 AM
 Surface Coordinates:
 Bottom Hole Coordinates:
 Ground Elevation: 3418.00ft
 K.B. Elevation: 3431.00ft
 Logged Interval: 3500.00ft To: 5520.00ft
 Total Depth: 5520.00ft
 Formation: MISSISSIPPIAN
 Drilling Fluid Type: CHEMICAL

SURFACE CO-ORDINATES

Well Type: Vertical
 Longitude: 101.826594 Latitude: 37.520934
 N/S Co-ord:
 E/W Co-ord:

ELEVATIONS

K.B. Elevation: 3431.00ft Ground Elevation: 3418.00ft
 K.B. to Ground: 13.00ft

TOTAL DEPTH

Measurement Type:	Measurement Depth:	TVD:
STRAP	5518.00	0.00
LOG	5522.00	0.00

LOGGED BY

Company: LARRY P. FRIEND
 Address: 1639 BURNS
 WICHITA, KS 67203-2757
 Phone Nbr: 316-265-2228
 Logged By: Geologist Name:

CONTRACTOR

Contractor: STERLING DRILLING CO.
 Rig #: 5
 Rig Type: DOUBLE
 Spud Date: 7/5/2012 Time: 3:00 AM
 TD Date: 7/11/2012 Time: 11:45 AM
 Rig Release: Time:

CASING SUMMARY

	Surface	Intermediate	Main
Bit Size	12.25 in		7.88 in

Bit Size	12.25 in		7.88 in		
Hole Size	12.25 in		7.88 in		
	Size	Set At	Type	# of Joints	Drilled Out At
Surf Casing	8.625 in	1628 ft	24#	39	
Int Casing					
Prod Casing	NONE in				

CASING SEQUENCE

Type	Hole Size	Casing Size	At
SURFACE	12.25 in	8.63	1628.00 ft

OPEN HOLE LOGS

Logging Company: WEATHERFORD
 Logging Engineer: ADAM SILL
 Truck #:
 Logging Date: 7/12/2012
 # Logs Run: 4
 Time Spent:
 # Logs Run Successful: 4

LOGS RUN

Tool	Logged Interval	Logged Interval	Hours	Remarks	Run #
CND W/PE	5522.00ft	3550.00ft	0.00		1
DI	5522.00ft	1628.00ft	0.00		1
SONIC	5522.00ft	1628.00ft	0.00		1
MICRO	5522.00ft	3550.00ft	0.00		1

LOGGING OPERATION SUMMARY

Date	From	To	Description Of Operation
7/11/2012	5522.00ft	1628.00ft	

Formation Depths

FORMATION DEPTHS	SAMPLE	LOG	COMPARISON TO: OXY, KU -1 WELL SW-SE, SEC 17-T29S-R41W
ATOKA	4918 (-1487)	4919 (-1488)	-4
MORROW SHALE	5018 (-1587)	5020 (-1589)	-5
LW. MORROW. MARKER	5323 (-1892)	5326 (-1895)	-5
UP. KEYES SAND	5396 (-1965)	5400 (-1969)	+1
MISS. CHESTER	5417 (-1986)	5420 (-1989)	+4
MISS. ST. GENEVIEVE	5459 (-2028)	5460 (-2029)	+3

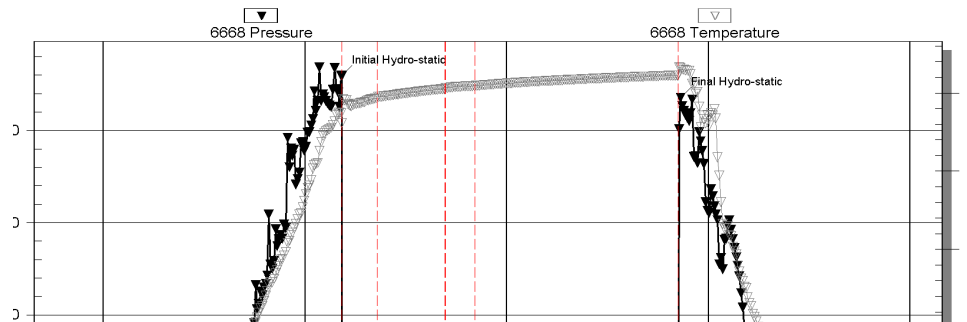
DRILLSTEM TESTS

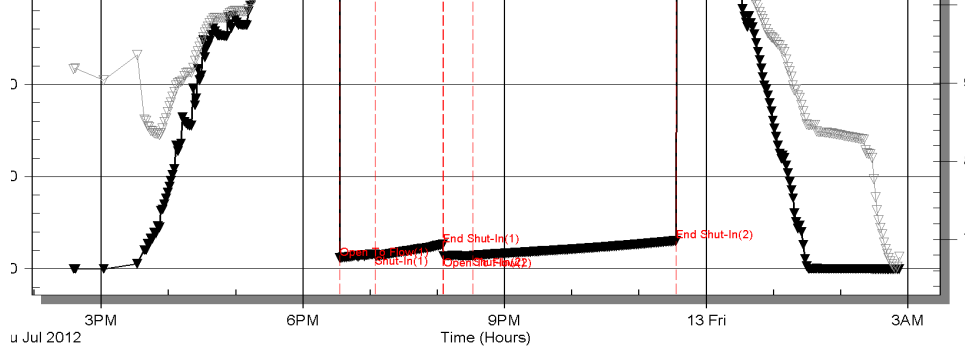
No	Interval	Formation
1	5335-5445 (5337-5447 LOG)	UP. KEYES SAND

DST #1 CHART

6668 Outside Stelbar Oil Corp. Inc. Bird 1-17 DST Test Number: 1

Pressure vs. Time





esting, Inc

Ref. No: 48397

Printed: 2012.07.13 @ 04:08:11

ROCK TYPES



ACCESSORIES

MINERAL

- Argillaceous
- ⊥ Calcareous
- Carbonaceous Flakes
- Sandy

FOSSIL

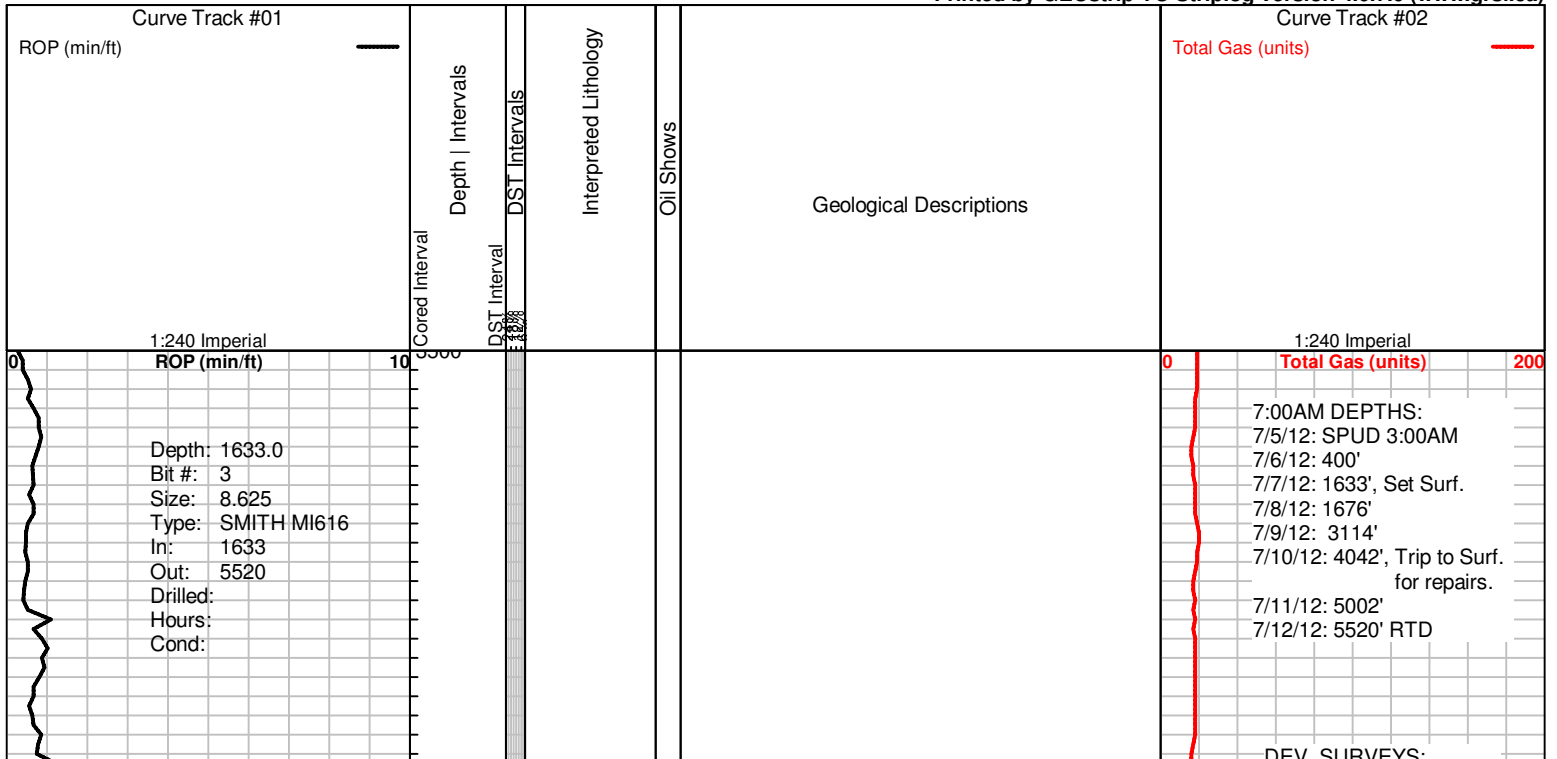
- ◊ Oolites

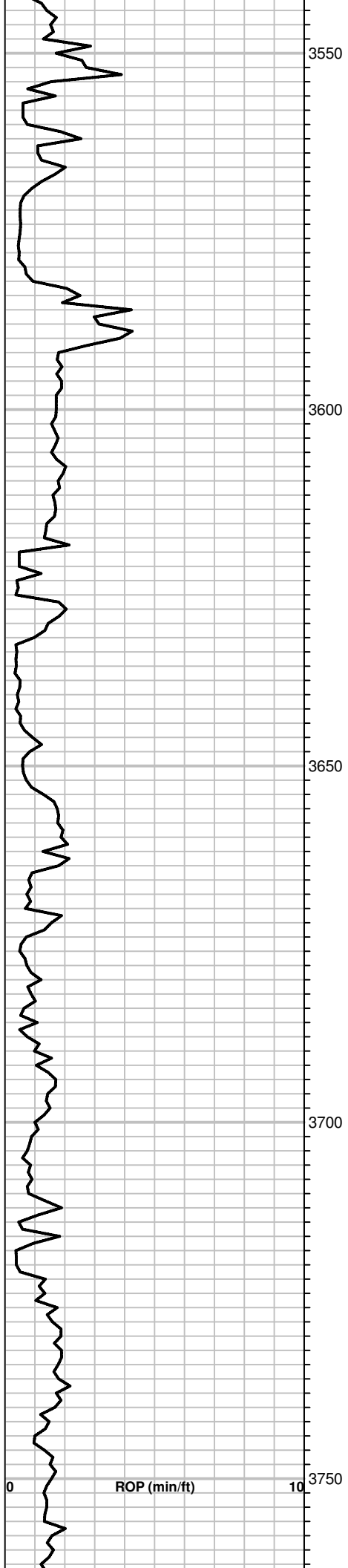
OTHER SYMBOLS

OIL SHOWS

- Even Stn
- Spotted Stn 50 - 75 %
- Spotted Stn 25 - 50 %
- Spotted Stn 1 - 25 %
- Questionable Stn
- D Dead Oil Stn
- Fluorescence

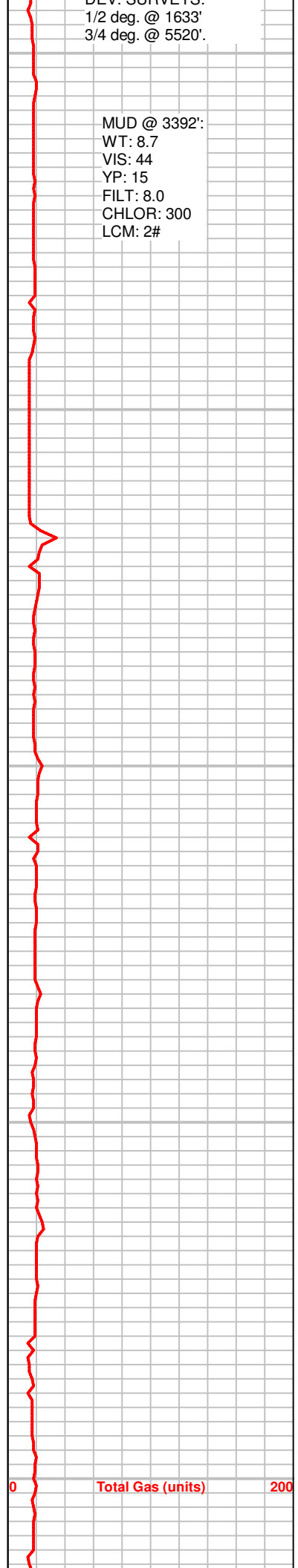
Printed by GEOstrip VC Striplog version 4.0.7.0 (www.grsi.ca)

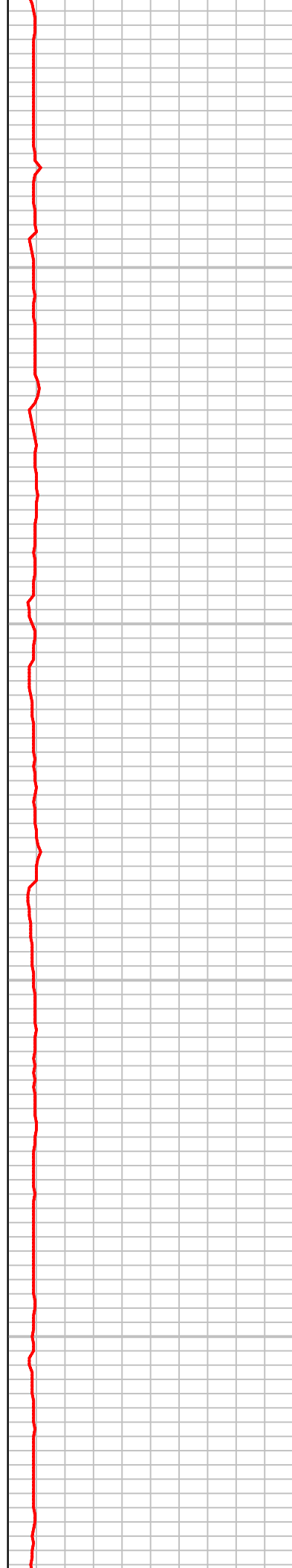
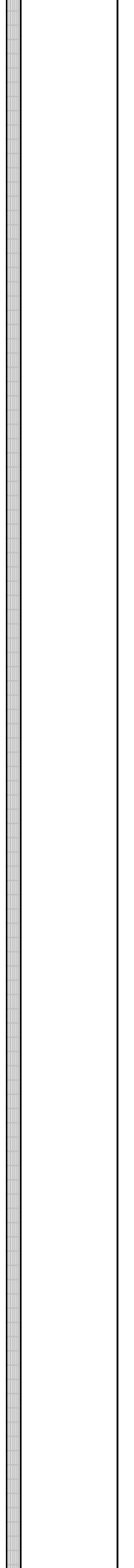
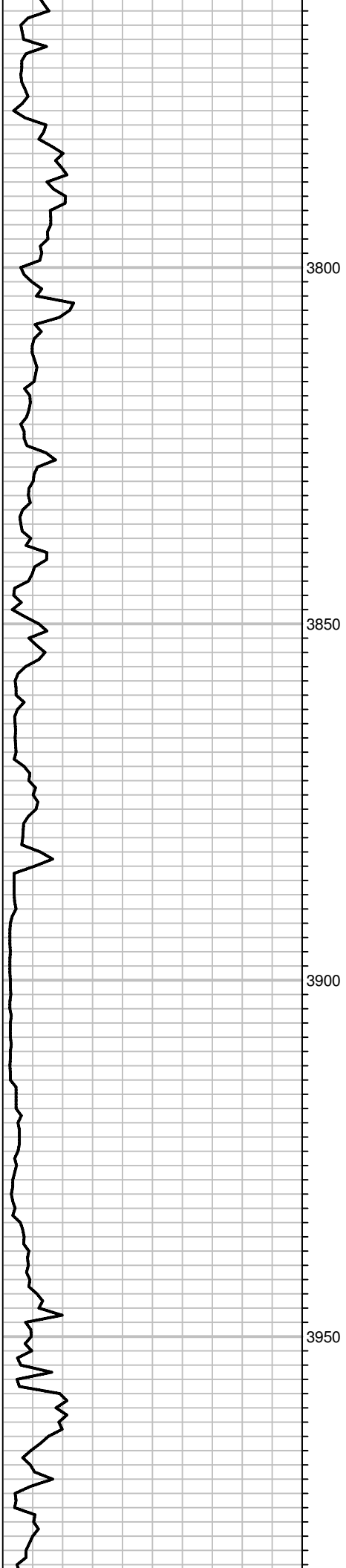


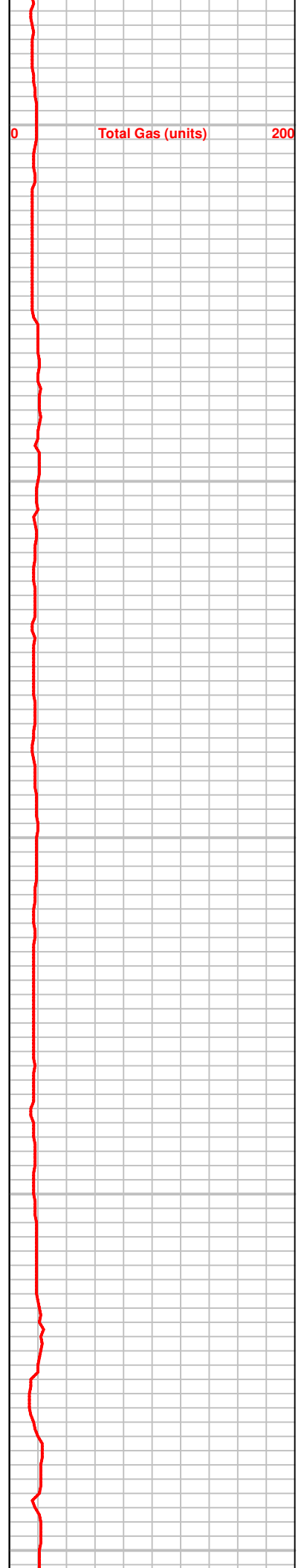
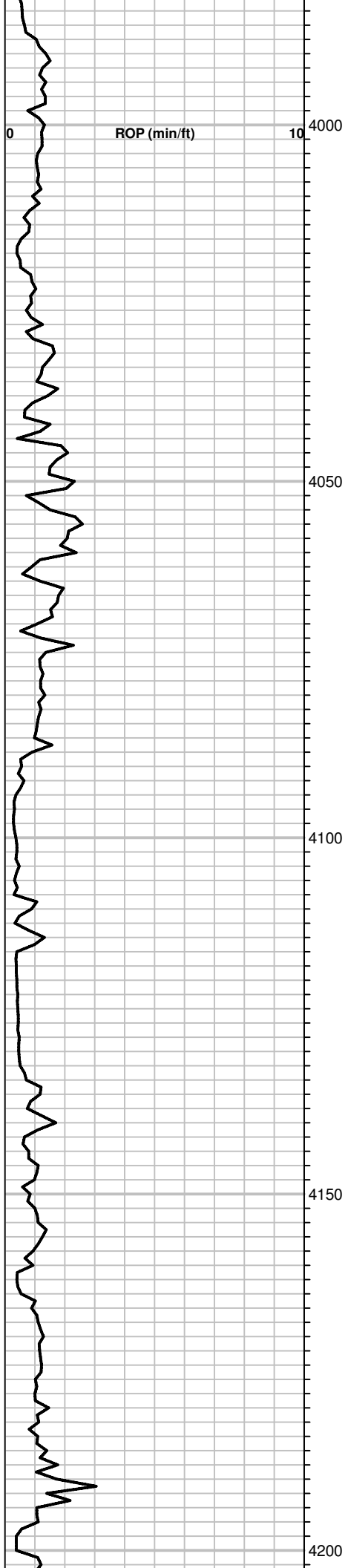


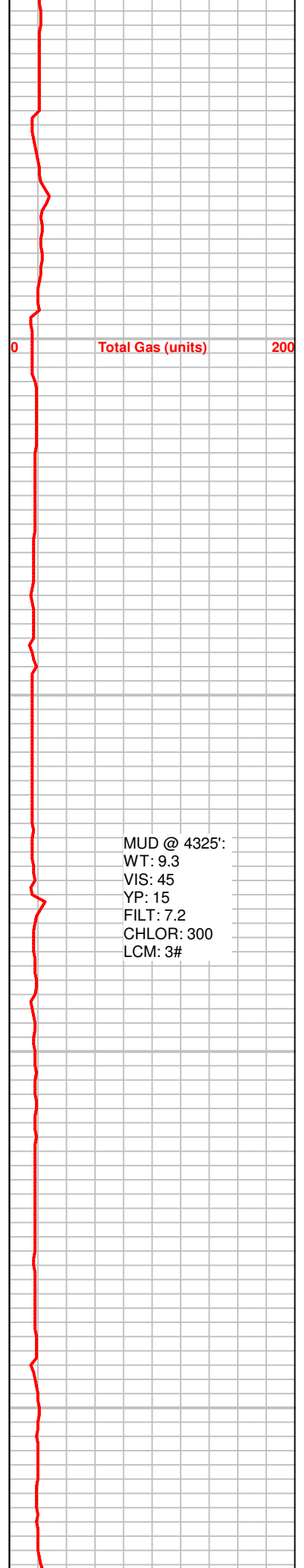
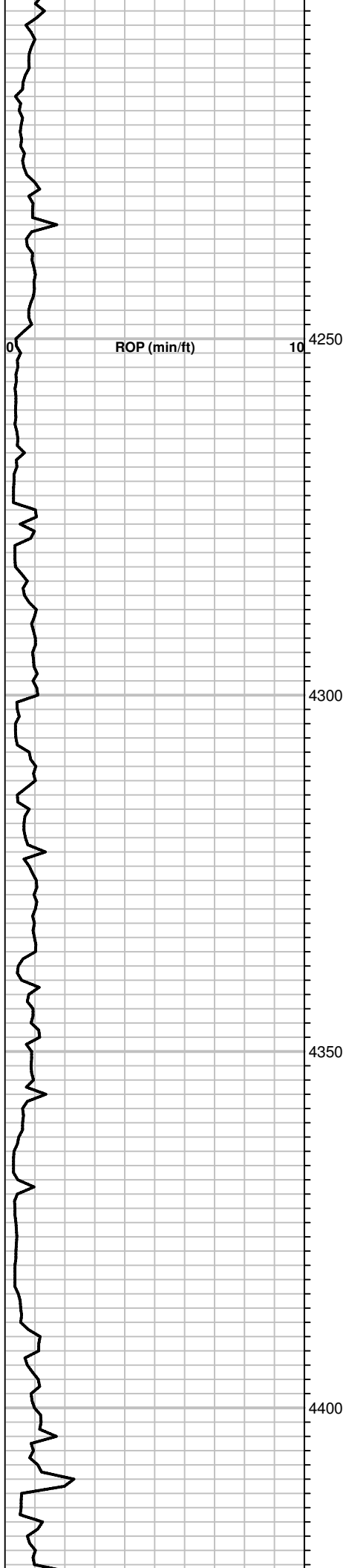
DEV: SURVEYS:
1/2 deg. @ 1633'
3/4 deg. @ 5520'

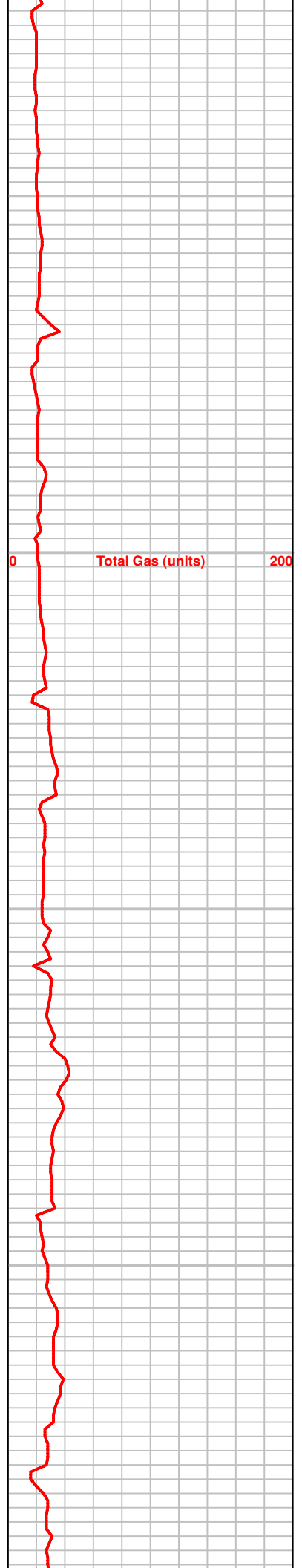
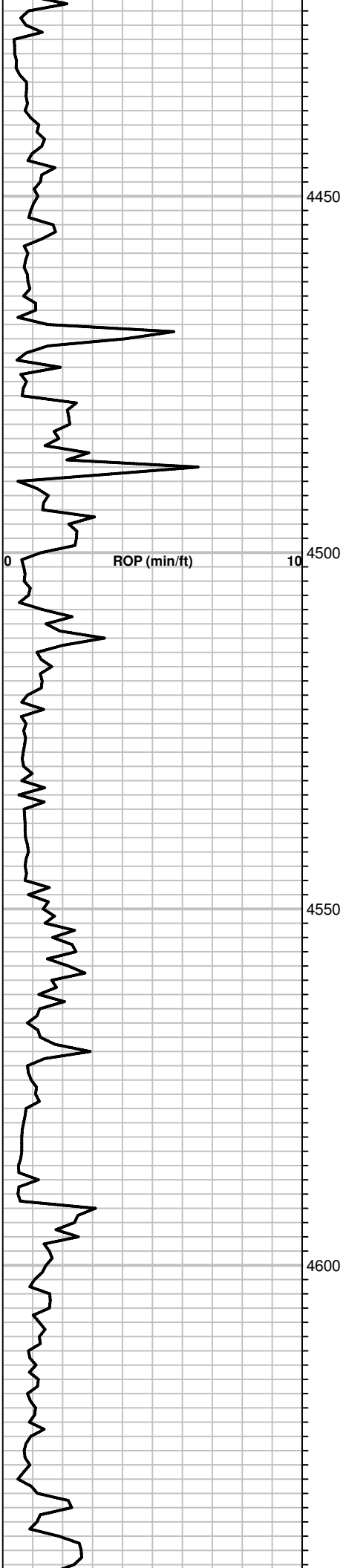
MUD @ 3392':
WT: 8.7
VIS: 44
YP: 15
FILT: 8.0
CHLOR: 300
LCM: 2#

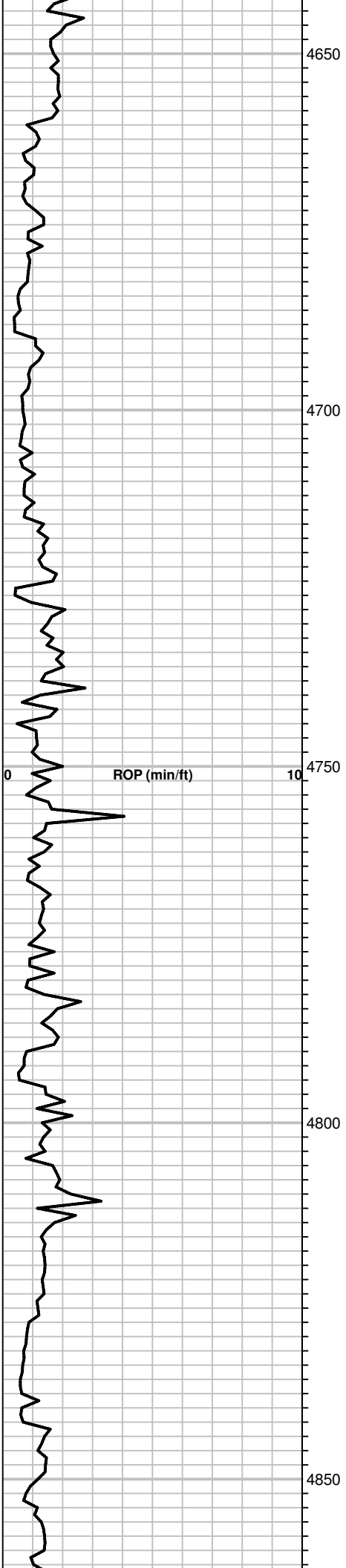








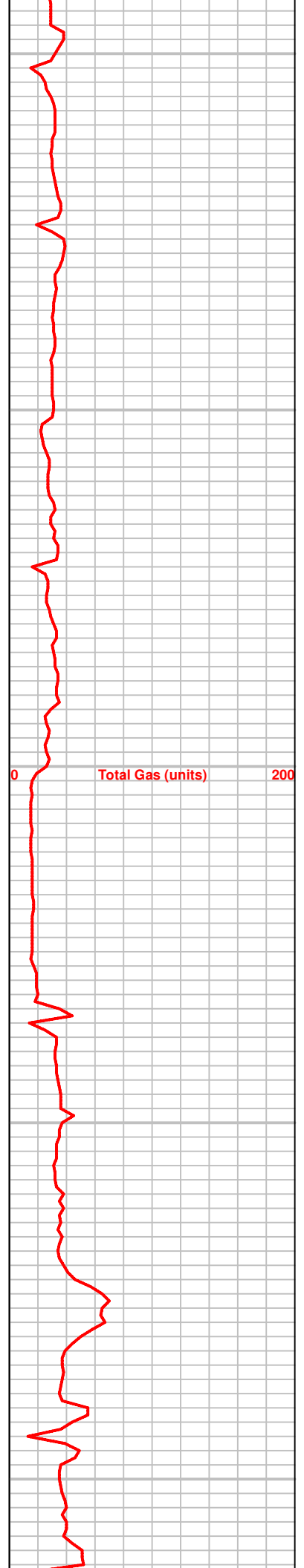


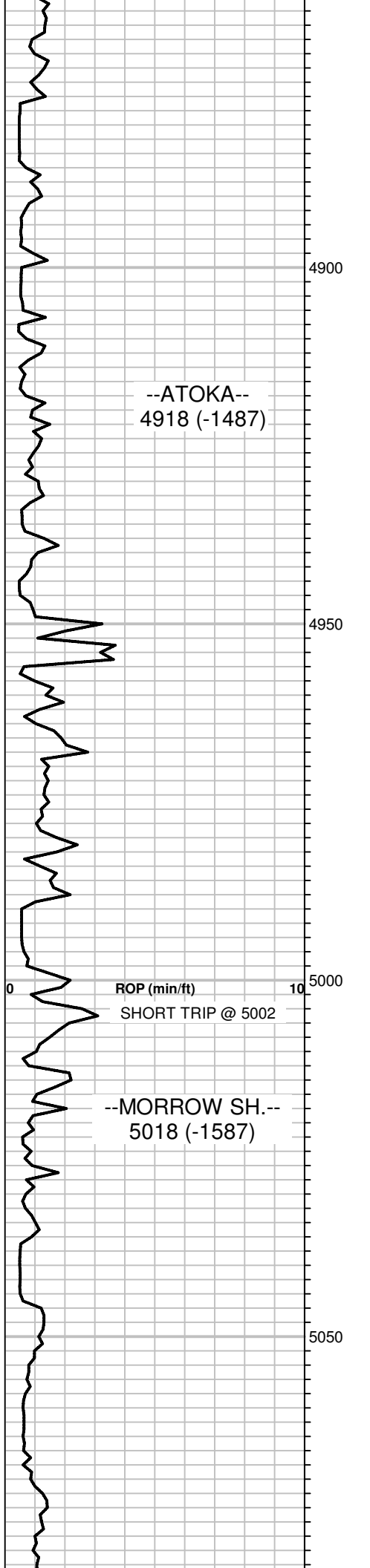


100: LS, DK. GRY - BRN, VFXLN, DSE, TR. FOSS; SHALE, BLK; NS

10: AS ABOVE, & TR. LS, TAN, V. OOLITIC W/ GD. OOLIC. POR. (FROM ABV?), NS

20: LS, DK. BRN, VFXLN, DSE TO SOME

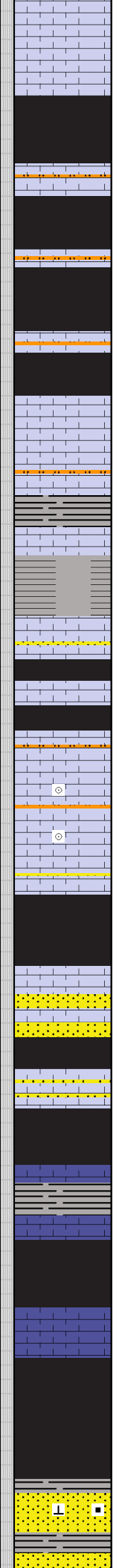




--ATOKA--
4918 (-1487)

ROP (min/ft)
SHORT TRIP @ 5002

--MORROW SH.--
5018 (-1587)



WEATH. W/ PR. POR, TR. FOSS; NS

30: SHALE, BLK & LS, AS ABOVE; NS

40: SHALE, BLK; LS, TAN- DK. BRN, SLI. FOSS DSE TO PR. XLN. POR, SOME WEATH; NS

50: TR. GRY LMY, SILTSTONE; LS, DK. GRY, PR. POR; SHALE, BLK; NS

60: TR. GRY, LMY. SILTSTONE; LS, GRY-BRN, TR. FOSS, PR. XLN. POR, SOME WEATH; SHALE, BLK; NS

70: SHALE, GRY - BLK; LIT. LS, DK. GRY - BRN, VFXLN, SOME SLI. WEATH, PR. POR; NS

80: SHALE, GRY & BLK; TR. DK. GRY. LMY. SILTSTONE & LS, GRY-BRN, DSE; NS

90: TR. LS, TAN, FXLN, FOSS, PR. - TR. FR. XLN. POR; SHALE, BLK; NS

100 & 10: LS, TAN-BRN, FXLN, SOME FOSS W/ PR. XLN. POR; SOME TAN LMY. SST, SLI. GLAUC. W/ PR. - FR. XLN. POR; NS

20: LT - DK. GRY LMY. SILTSTONE & TR. LMY SST, TITE; NS

30 & 40: TR. LS, TAN, V. OOLITIC W/ PR. XLN. POR; TR. LMY. SILTSTONE; LS, BRN, DSE & SHALE, BLK; NS

50: V. LMY. SST, TAN- BRN, SOME V. GLAUC, TITE TO FR. XLN. POR; NS

60: LESS SST AS ABV AND DK. GRY, SLI. LMY SHALE TO SHLY. LS; NS

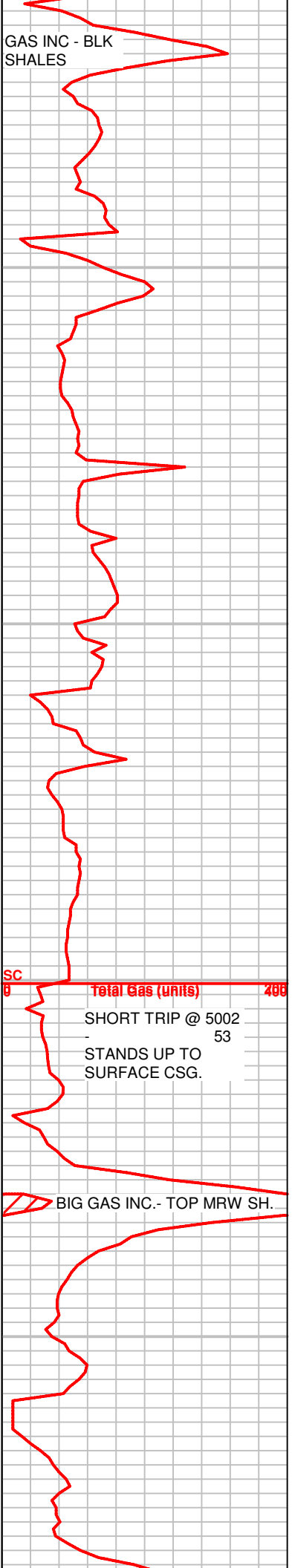
70, 80 & 90: SOME LMY. SST, TAN-BRN, SOME SLI. GLAUC, PR - FR. XLN. POR; LS. BRN, FXLN, DSE; GRY. SLI. LMY SHALE & SHALE, BLK; NS

100: LS, DK. BRN, FXLN, SLI. PYRITIC, TR. GLAUC, W/ PR. XLN. POR; SHALE, BLK & TR. PYRITE; NS

10: SHALE, BLK, SLI. LMY, SLI. PYRITIC.

20 & 30: SHALE, BLK, SOME SLI. LMY.

40 & 50: SM. AMT. SST. BRN - GRN. VFN-CSE

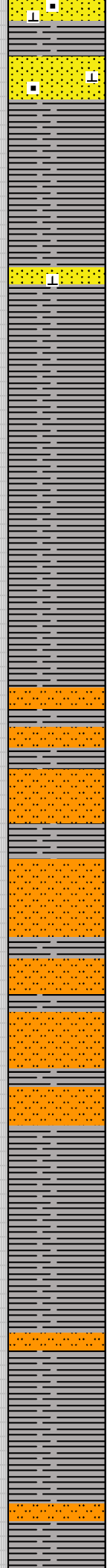
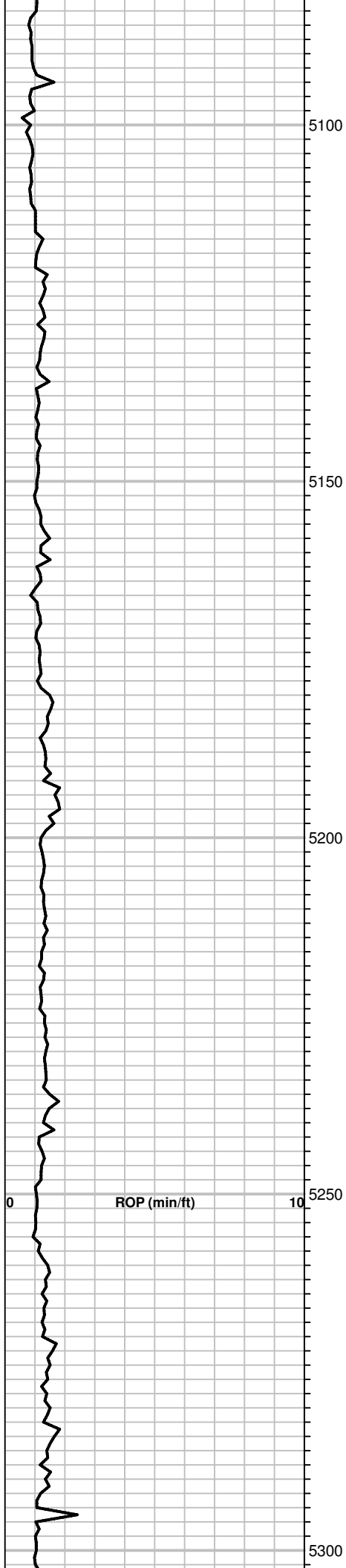


GAS INC - BLK SHALES

SC
Total Gas (units)

SHORT TRIP @ 5002
53
STANDS UP TO SURFACE CSG.

BIG GAS INC.- TOP MRW SH.



GRND, CLR, SANG-SRND, SLI. LMY, W/ TR. BLK CARB. SPKS, TITE; SHALE, GRY - BLK; NS, NO FLUOR, NO CUT.

60: SHALE, GRY - BLK; TR. PYRITE.

70: TR. SST, GRN - TAN, LMY, TITE; MOSTLY SHALE, GRY - BLK.

80 & 90: MOSTLY SHALE, GRY - BLK; TR. SST. AS ABOVE; NS.

100, 10 & 20: SHALE, GRY -BLK.

30: SHALE, GRY-BLK, AND RARE TR. GRY, TITE, SILTSTONE.

40: SM. AMT. GRY, TITE SILTSTONE; SHALE, GRY-BLK; TR. PYRITE.

50: INC. LT. GRY. TITE SILTSTONE; SHALE, AS ABOVE.

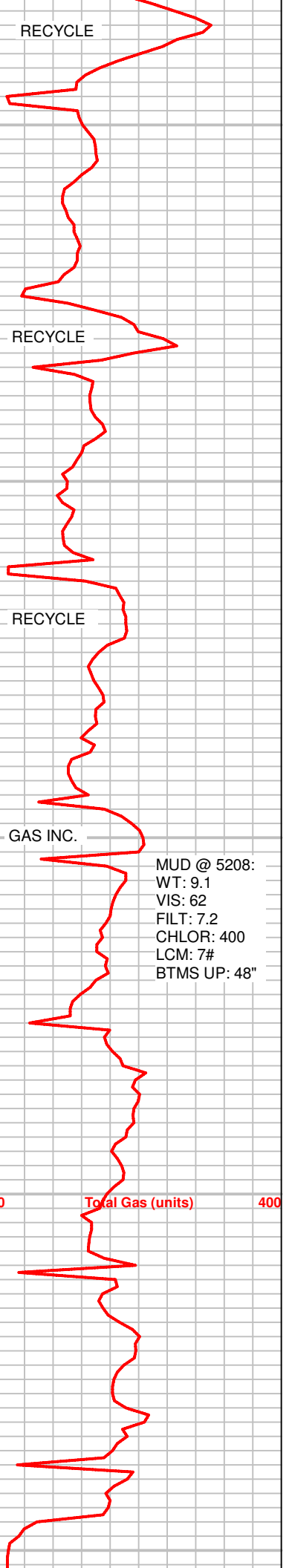
60: AS ABOVE.

70 & 80: MOSTLY SHALE, GRY & BLK AND LESSER SILTSTONE AS ABOVE.

90 & 100: MOSTLY SHALE GRY & BLK AND TR. GRY, TITE SILTSTONE.

10 & 20: SHALE, GRY & BLK; TR. SILTSTONE GRY, TITE.

30 & 40: SHALE, DK. GRY & BLK; STILL CARRYING SM. AMT. GRY, TITE SILTSTONE.



--LW. MRW. MRK--
5323 (-1892)

DST #1: 5335-5445
(LOG INT: 5337-5447)
STRADDLE TEST
TIMES: 30-60-30-180
IF: BLOW BLT TO .5" -
THEN DIED OFF TO WK
SURF. BLOW.
FF: NO BLOW
REC: 10' DRLG. MD, NS
IFP: 58-79#, FFP: 69-70#
SIP: 131-151#
HP: 2794-2676#
MAX. TEMP: 133 F.
SEE CHART ABOVE

5350

--UP. KEYES SAND--
5396 (-1965)

5400

--MISS. CHESTER--
5417 (-1986)
CFS 5421

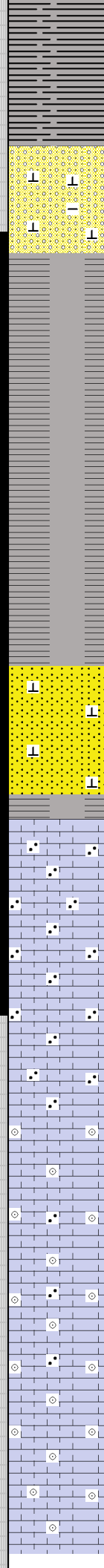
5450

--MISS. ST. GEN.--
5459 (-2028)

5500

ROP (min/ft)

CFS 5520



50 & 60: CONG. SST, MD- PEBBLE GRNS, CLR - TR. FROST, FEW LS & SH. GRNS, ANG - SBANG, V. SLI. GLAUC, TITE - TR. FRIAB. W/ PR - FR. INTER-GRAN. POR, SOME CALC. CEM; NS, NO FLUOR, NO CUT.

80 & 90: SHALE, GRY.

100 & 10: SHALE, GRY & BLK; TR. GRY, TITE SILTSTONE; TR. PYRITE.

20: TR. SST, SILT - MED GRND, PRLY SORT, ANG - SBANG, CLR, FEW LS. GRNS INTER - MIXED, GLAUC, CALC. CEM, FR - GD. POR; NS, NO FLUOR, NO CUT.

5421: CIRC: SST. SILT - MD GRND, PRLY. SORT, ANG - SBANG, CLR, GLAUC, CALC. CEM, FRIAB. W/ FR - GD. INTERGRAN. POR, MANY PCS. W/ WK. SPTY. FLUOR, FR. MILKY CUT, RARE TR. FO, R. TR. PR. SPTY. BRN STN(PCS W/ MORE LMY CEM HAD NS); NO ODOR;

ALSO FR. AMT. CRM-TAN, SOFT, V. ARENACEOUS LS, GD. XLN. POR & NS.

50 & 60: LS, BRN - MAROON, V. ARENACEOUS SOFT; NS, NO FLOUR.

70 & 80: LS, MAROON TO CRM-TAN, V. AREN, PR. - GD. XLN. POR; SOME SHALE, GRY & BLK; TR. PYRITE; NS

90: TR. LS, TAN, FXLN, AREN. & SLI. MICRO-OOLITIC, PR. - FR. XLN. POR & AREN. LS, AS ABOVE; NS

100 & 10: LS, CRM-TAN, FXLN, MICRO-OOL. / AREN., W/ PR - FR. XLN. POR; NS

20: TR. LS, BRN, V. OOLITIC, HD, PR. POR. & LS, AS ABOVE; NS

20 CIRC: LS, CRM-BRN, V. OOLITIC, W/ PR - FR. XLN. POR. & R. TR. OOLIC. POR; NS

107 UNIT INC.

RECYCLE

GAS INC.

GAS INC.

60 UNIT INC.

RECYCLE

0 Total Gas (units) 400

PIPE STRAP @ 5520:
1.99' SHORT TO BOARD.

RTD 5520
LTD 5522

5550

MUD @ 5520:
WT: 9.2
VIS:65
YP: 22
FILT: 8.0
CHLOR: 400
LCM: 6#