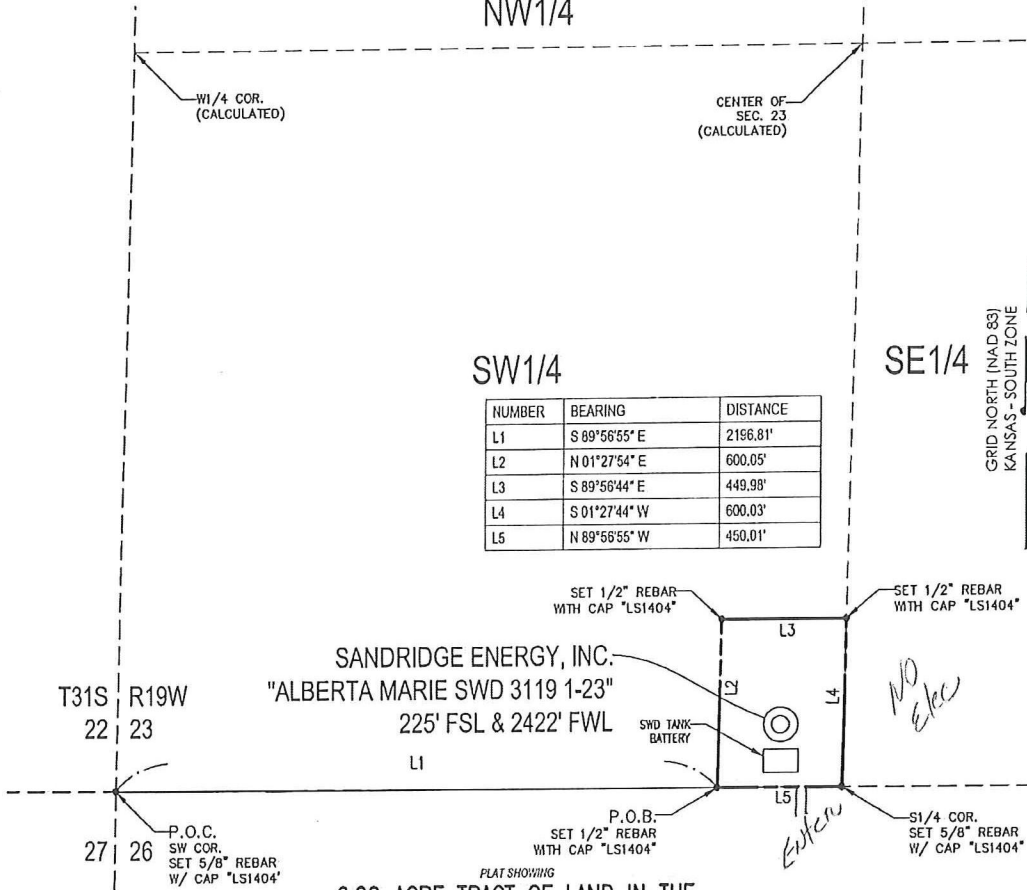


170 Commerce Road, Building 201
 Conway, Arkansas 72032
 501.328.3316 | 501.328.3325 f
 www.craftontull.com



COMANCHE COUNTY, KANSAS

T 31 S - R 19 W
 NW1/4



NUMBER	BEARING	DISTANCE
L1	S 89°56'55" E	2196.81'
L2	N 01°27'54" E	600.05'
L3	S 89°56'44" E	449.98'
L4	S 01°27'44" W	600.03'
L5	N 89°56'55" W	450.01'



6.20 ACRE TRACT OF LAND IN THE
 SW1/4 OF SECTION 23, T31S-R19W,
 COMANCHE COUNTY, KANSAS

METES AND BOUNDS DESCRIPTION (6.20 ACRE TRACT)

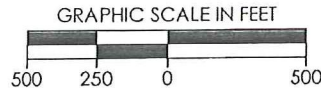
PART OF THE SW1/4 OF SECTION 23, TOWNSHIP 31 SOUTH, RANGE 19 WEST, COMANCHE COUNTY, KANSAS, MORE PARTICULARLY DESCRIBED AS FOLLOWS:

COMMENCING AT A SET 5/8" REBAR WITH CAP MARKED "LS1404" AT THE SOUTHWEST CORNER OF SAID SECTION 23; THENCE S 89°56'55" E ALONG THE SOUTH LINE OF SAID SECTION 23, A DISTANCE OF 2196.81 FEET TO A SET 5/8" REBAR WITH CAP MARKED "LS1404", SAID POINT BEING THE POINT OF BEGINNING; THENCE N 01°27'54" E, A DISTANCE OF 600.05 FEET TO A SET 5/8" REBAR WITH CAP MARKED "LS1404"; THENCE S 89°56'44" E, A DISTANCE OF 449.98 FEET TO A SET 5/8" REBAR WITH CAP MARKED "LS1404"; THENCE S 01°27'44" W, A DISTANCE OF 600.03 FEET TO A SET 5/8" REBAR WITH CAP MARKED "LS1404"; THENCE N 89°56'55" W ALONG THE SOUTH LINE OF SAID SECTION 23, A DISTANCE OF 450.01 FEET TO THE POINT OF BEGINNING.

SAID TRACT CONTAINING 6.20 ACRES OF LAND AS SURVEYED, MORE OR LESS.

BASIS OF BEARINGS:
 KANSAS COORDINATE SYSTEM 1983 SOUTH ZONE
BEARINGS: GRID
DISTANCES: US SURVEY FOOT AT GRID
COORDINATES: US SURVEY FOOT AT GRID

SURVEYOR'S CERTIFICATE:
 I, C. ED GRAY, KANSAS LICENSED PROFESSIONAL LAND SURVEYOR, NO. 1404, DO HEREBY CERTIFY THAT THIS PLAT REPRESENTS THE RESULTS OF A SURVEY MADE ON THE GROUND UNDER MY SUPERVISION ON THE DATE OF 05-15-2012. NO EASEMENTS OR OTHER TITLE DOCUMENTS WERE PROVIDED TO THE SURVEYOR FOR THIS PROPERTY.



REVISION		SandRidge	
△	MOVED SHL (5-24-2012)	"ALBERTA MARIE SWD 3119 1-23" PART OF THE SW1/4 OF SECTION 23, T-31-S, R-19-W PROPOSED DRILL SITE COMANCHE COUNTY, KANSAS	
△	REVISED NAME (6-26-2012)		
SCALE: 1" = 500'		DRAWN BY: S.ANDERSON	
PLOT DATE: 06-26-2012		SHEET NO.: 1 OF 1	