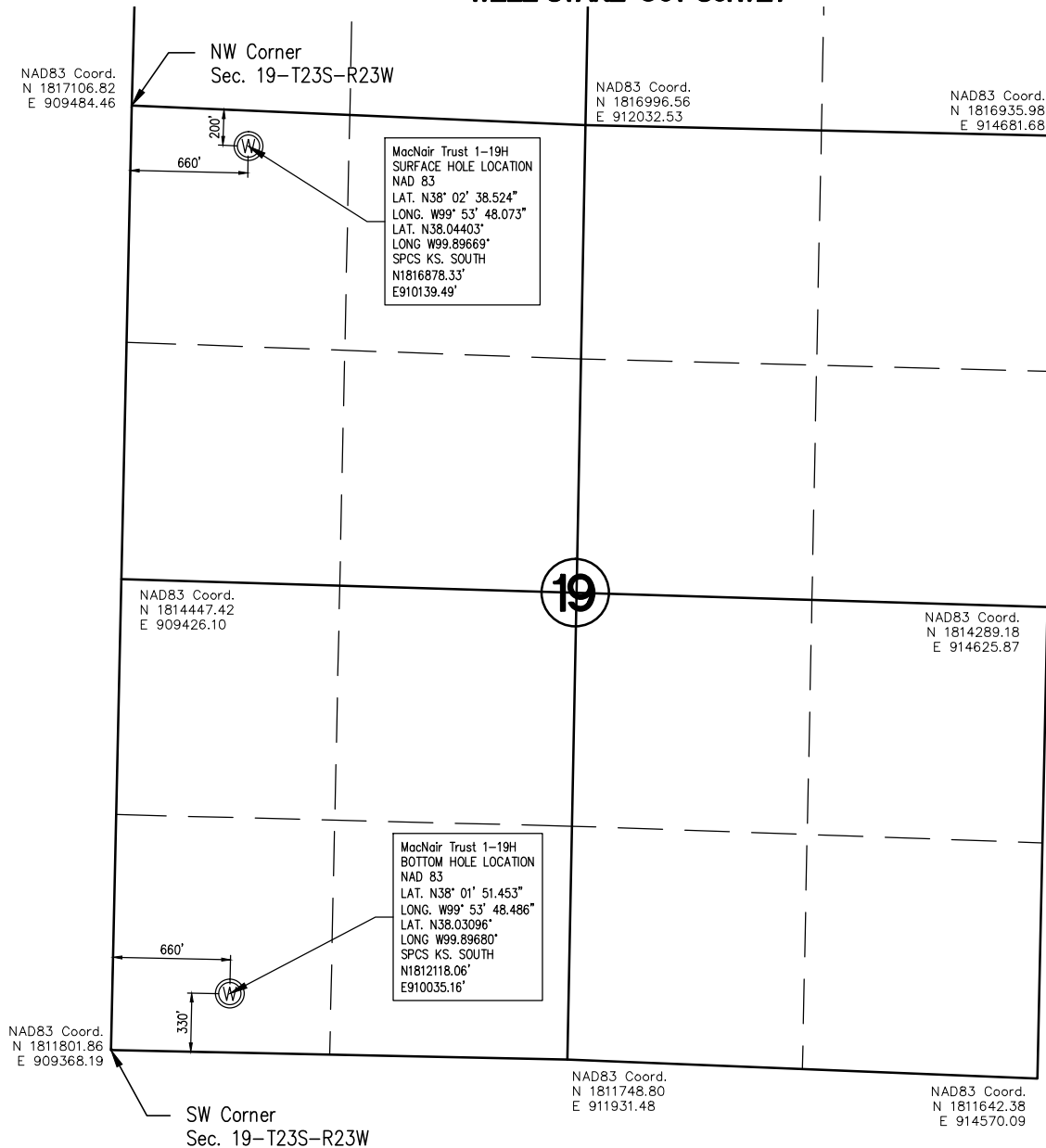


WELL STAKE-OUT SURVEY



Lease Name: MacNair Trust
 Well No. 1-19H
 Surface El. at SHL: 2408 NAVD88
 Well location Co./State: Hodgeman Co. Kansas
 Well location Section: 19-T23S-R23W

Alternate Datums

MacNair Trust 1-19H SHL
 Horiz. Datum NAD27
 Lat. N38.044004° Long. W99.89629°

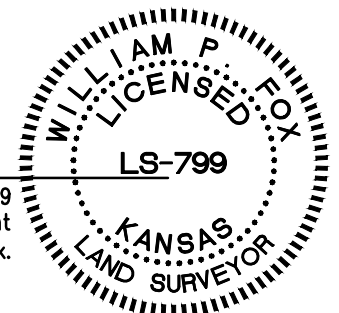
SURVEY DATUMS (shown on drawing)

Horz. Datum NAD83(CORS96)
 Vert. Datum NAVD88(GEOD12)
 Ks. SPCS South Zone (US Feet)

State of Kansas)
)SS
 Sedgwick County)

This is to certify that this map or plat and the survey on which it is based was made by me or under my direct supervision and that to the best of knowledge and belief, this is a true and correct exhibit of said Survey. The wells shown hereon were staked July 11, 2012 at the coordinate location noted.

William P. Fox LS 799
 This survey is valid only if print
 bears Surveyor's seal signed in blue ink.



POE & ASSOCIATES, INC.
 CONSULTING ENGINEERS
 5940 E. Central, Suite 200 • Wichita, KS 67208-4242
 Phone 316/685-4114 • FAX 316/685-4444