

# T35S, R9W, 6th P.M.

SGOMI

2.5" Alum. Cap  
NAD 27 Kansas South  
N: 134557.64  
E: 2071459.39

Osage Diminished  
Reservation Boundary

N89°38'35"W - 2665.54' (Meas.)

N89°31'17"W - 2673.00' (Meas.)

1/2" Rebar W/Limestone  
Fragments,  
In Road Intersection  
NAD 27 Kansas South  
N: 134540.83  
E: 2076798.15

Lot 2

Lot 1

T34S

T35S

N00°03'09"W - 2645.86' (Meas.)

N00°14'00"E - 2642.48' (Meas.)

N00°14'00"E - 2642.48' (Meas.)

N00°14'00"E - 2642.48' (Meas.)

Lot 6

Lot 5

Lot 4

Lot 3

2012 UELS Alum. Cap  
0.3" High  
NAD 27 Kansas South  
N: 134552.08  
E: 2074125.05

2012 UELS Alum. Cap  
0.4" High, Steel Post  
NAD 27 Kansas South  
N: 131911.69  
E: 2071472.77

990'

CHAIN LAND 3509 #1-1  
Elev. Ungraded Ground = 1247'

2012 UELS Alum. Cap  
0.2" High, Steel Post  
NAD 27 Kansas South  
N: 129265.73  
E: 2071486.13

N89°34'26"W - 2656.77' (Meas.)

N89°34'26"W - 2655.36' (Meas.)

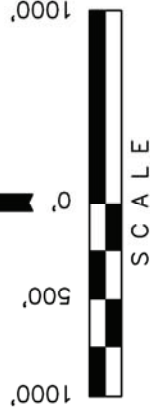
R 8  
R 9  
W 8  
W 9

## BASIS OF ELEVATION

SPOT ELEVATION LOCATED AT THE NORTHEAST CORNER OF SECTION 22, T35S, R7W, 6th P.M. TAKEN FROM THE ANTHONY, QUADRANGLE, KANSAS, HARPER COUNTY, 7.5 MINUTE QUAD (TOPOGRAPHIC MAP) PUBLISHED BY THE UNITED STATES DEPARTMENT OF THE INTERIOR, GEOLOGICAL SURVEY. SAID ELEVATION IS MARKED AS BEING 1348 FEET.

## BASIS OF BEARINGS

BASIS OF BEARINGS IS A G.P.S. OBSERVATION.



SCALE

2012 UELS Alum. Cap  
0.5" Below Ground,  
In Road  
NAD 27 Kansas South  
N: 131898.22  
E: 2076798.32

Limestone W/1/2" Rebar  
1.8" Below Ground,  
In Road Intersection  
NAD 27 Kansas South  
N: 129255.61  
E: 2076798.51

CERTIFICATE

THIS IS TO CERTIFY THAT THE ABOVE PLAT WAS PREPARED FROM FIELD NOTES OF ACTUAL SURVEYS MADE BY ME ON UNDER MY SUPERVISION AND THAT THE SAME ARE TRUE AND CORRECT TO THE BEST OF MY KNOWLEDGE AND BELIEF.

*Justin*  
REGISTERED LAND SURVEYOR  
REGISTRATION NO. N 581  
STATE OF KANSAS  
2017-12

UNTAH ENGINEERING & LAND SURVEYING  
85 SOUTH 200 EAST - VERNAL, UTAH 84078  
(435) 789-1017

SCALE	DATE SURVEYED:	DATE DRAWN:
1" = 1000'	07-10-12	07-17-12
PARTY	REFERENCES	
J.P. B.L. C.A.G.	G.L.O. PLAT	
WEATHER	FILE	
HOT	SGOMI	

NAD 83 (#1-1 SURFACE LOCATION)
LATITUDE = 37°01'20.43" (37.022342)
LONGITUDE = 98°15'07.64" (98.252122)
NAD 27 (#1-1 SURFACE LOCATION)
LATITUDE = 37°01'20.33" (37.022314)
LONGITUDE = 98°15'06.39" (98.251775)
STATE PLANE NAD 27 (KANSAS SOUTH)
N: 129595.68 E: 2072474.47

## LEGEND:

— = 90° SYMBOL

● = PROPOSED WELL HEAD.

▲ = SECTION CORNERS LOCATED.