

**KEVIN L. KESSLER**  
**CONSULTING PETROLEUM GEOLOGIST**  
( 316 ) 522-7338

**OPERATOR : MULL DRILLING COMPANY INC.**  
**LEASE : MARLENE**                      **WELL # : 1 - 3**  
**LOCATION : 525' FSL & 660' FWL**  
**SEC: 03**                      **TWP : 20 S**                      **RGE : 23 W**  
**COUNTY : NESS**                      **STATE : KANSAS**

**ELEVATION**  
**KB : 2266**  
**GL : 2261**  
MEASUREMENTS FROM  
**KB**

CONTRACTOR : W W DRILLING RIG # 10  
COMM : 04 / 19 / 2012                      COMP : 04 / 27 / 2012  
RTD : 4450                      LOG TD : 4452  
SAMPLES SAVED FROM : 3600                      TO: RTD  
GEOLOGICAL SUPERVISION FROM : 3600                      TO : RTD  
MUD UP : 3500                      TYPE MUD : CHEMICAL

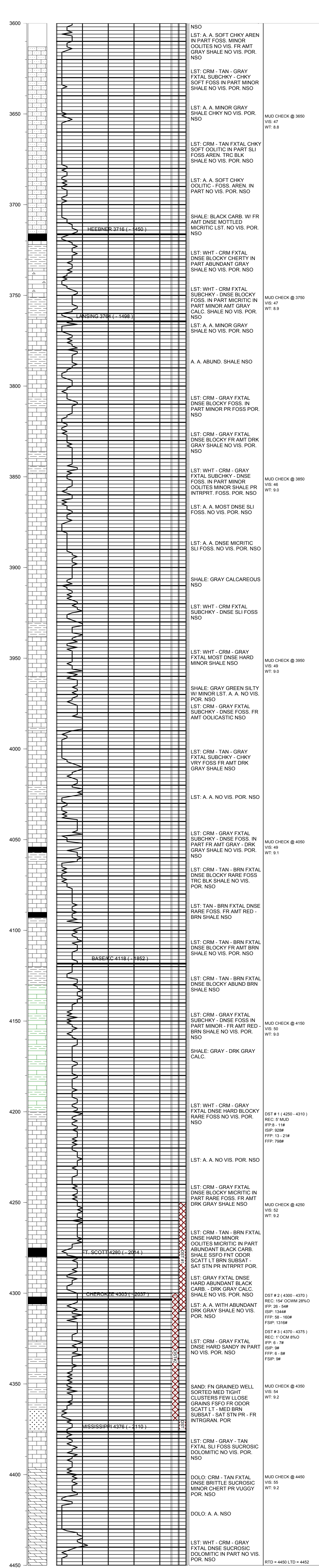
**CASING RECORD**  
SURFACE :  
8 5/8" @ 211'  
PRODUCTION :

**ELECTRICAL SURVEYS:**

FORMATION	TOP	LOG	DATUM	TOP	SAMPLE	DATUM	STRUCT. COMP.
HEEBNER	3716		- 1450	3716		- 1450	- 14
LANSING	3764		- 1498	3764		- 1498	- 14
BASE / KC	4118		- 1852	4118		- 1852	- 12
FORT SCOTT	4280		- 2014	4280		- 2014	- 14
CHEROKEE	4303		- 2037	4303		- 2037	- 13
MISSISSIPPI	4376		- 2110	4376		2110	- 03

DIL  
CNL / CDL  
MICRO  
SONIC

REFERENCE WELL FOR STRUCTURAL COMPARISON :  
MULL DRILLING # 1 - 4 WINTER - MAUCH UNIT    04 - T 20 S - R 23 W    NESS COUNTY KANSAS



**COMMENTS:**

**DUE TO NEGATIVE DST RESULTS THIS WELL  
WAS PLUGGED AND ABANDONED**

**KEVIN L. KESSLER**