



TRILOBITE TESTING, INC.

DRILL STEM TEST REPORT

Venture Resources Inc
 2255 S Wadsworth STE 205
 Lakewood CO 80227
 ATTN: Greg Mackey

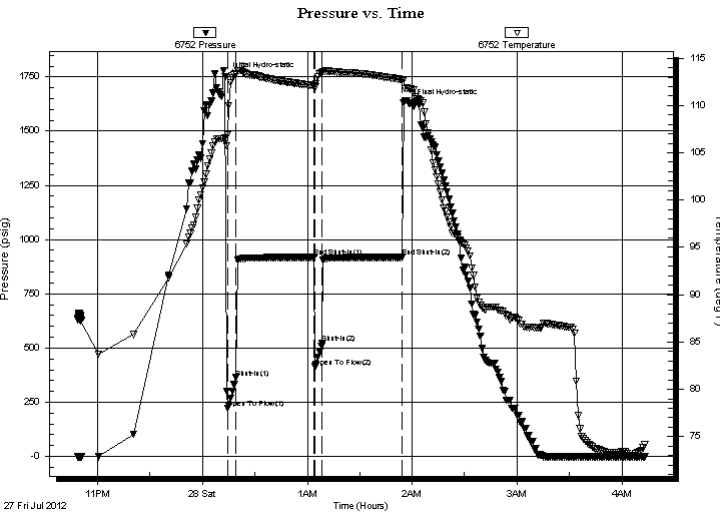
2 11s 18w Ellis
Cross # 14
 Job Ticket: 49279 **DST#: 2**
 Test Start: 2012.07.27 @ 22:48:31

GENERAL INFORMATION:

Formation: **Arbuckle**
 Deviated: No Whipstock: 1982.00 ft (KB)
 Time Tool Opened: 00:14:31
 Time Test Ended: 04:13:01
 Interval: **3472.00 ft (KB) To 3496.00 ft (KB) (TVD)**
 Total Depth: 3540.00 ft (KB) (TVD)
 Hole Diameter: 7.88 inches Hole Condition: Fair
 Test Type: Conventional Straddle (Reset)
 Tester: Brian Fairbank
 Unit No: 41
 Reference Elevations: 1982.00 ft (KB)
 1975.00 ft (CF)
 KB to GR/CF: 7.00 ft

Serial #: 6752 Inside
 Press @ Run Depth: 523.51 psig @ 3476.00 ft (KB) Capacity: 8000.00 psig
 Start Date: 2012.07.27 End Date: 2012.07.28 Last Calib.: 2012.07.28
 Start Time: 22:48:32 End Time: 04:13:01 Time On Btm: 2012.07.28 @ 00:13:01
 Time Off Btm: 2012.07.28 @ 01:58:31

TEST COMMENT: IFP - BOB 40 sec
 ISI - no blow back
 FFP - BOB 45 sec
 FSI - no blow back



PRESSURE SUMMARY

Time (Min.)	Pressure (psig)	Temp (deg F)	Annotation
0	1753.11	106.58	Initial Hydro-static
2	223.24	106.94	Open To Flow (1)
6	363.17	113.32	Shut-In(1)
51	918.70	112.08	End Shut-In(1)
52	413.92	111.93	Open To Flow (2)
56	523.51	113.51	Shut-In(2)
101	918.54	112.67	End Shut-In(2)
106	1629.28	111.74	Final Hydro-static

Recovery

Length (ft)	Description	Volume (bbl)
620.00	V SOCMMW 2%O, 93%W, 5%M	8.70
295.00	WM 20%W, 80%M	4.14

Gas Rates

Choke (inches)	Pressure (psig)	Gas Rate (Mcf/d)

* Recovery from multiple tests



TRILOBITE TESTING, INC.

DRILL STEM TEST REPORT

Venture Resources Inc
2255 S Wadsworth STE 205
Lakewood CO 80227
ATTN: Greg Mackey

2 11s 18w Ellis
Cross # 14
Job Ticket: 49279 **DST#: 2**
Test Start: 2012.07.27 @ 22:48:31

GENERAL INFORMATION:

Formation: **Arbuckle**
Deviated: No Whipstock: 1982.00 ft (KB)
Time Tool Opened: 00:14:31
Time Test Ended: 04:13:01
Interval: 3472.00 ft (KB) To 3496.00 ft (KB) (TVD)
Total Depth: 3540.00 ft (KB) (TVD)
Hole Diameter: 7.88 inches Hole Condition: Fair

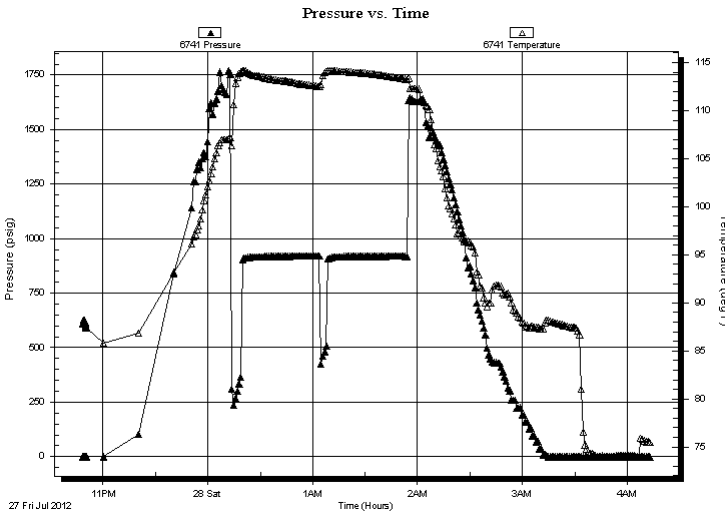
Test Type: Conventional Straddle (Reset)
Tester: Brian Fairbank
Unit No: 41
Reference Elevations: 1982.00 ft (KB)
1975.00 ft (CF)
KB to GR/CF: 7.00 ft

Serial #: 6741 Outside
Press @ Run Depth: psig @ 3476.00 ft (KB)
Start Date: 2012.07.27 End Date: 2012.07.28
Start Time: 22:48:19 End Time: 04:13:18

Capacity: 8000.00 psig
Last Calib.: 2012.07.28
Time On Btm:
Time Off Btm:

TEST COMMENT: IFP - BOB 40 sec
ISI - no blow back
FFP - BOB 45 sec
FSI - no blow back

PRESSURE SUMMARY



Time (Min.)	Pressure (psig)	Temp (deg F)	Annotation

Recovery

Length (ft)	Description	Volume (bbl)
620.00	VSOCMW 2%O, 93%W, 5%M	8.70
295.00	WM 20%W, 80%M	4.14

* Recovery from multiple tests

Gas Rates

Choke (inches)	Pressure (psig)	Gas Rate (Mcf/d)



TRILOBITE TESTING, INC.

DRILL STEM TEST REPORT

Venture Resources Inc
 2255 S Wadsworth STE 205
 Lakewood CO 80227
 ATTN: Greg Mackey

2 11s 18w Ellis
Cross # 14
 Job Ticket: 49279 **DST#: 2**
 Test Start: 2012.07.27 @ 22:48:31

GENERAL INFORMATION:

Formation: **Arbuckle**
 Deviated: No Whipstock: 1982.00 ft (KB)
 Time Tool Opened: 00:14:31
 Time Test Ended: 04:13:01

Test Type: Conventional Straddle (Reset)
 Tester: Brian Fairbank
 Unit No: 41

Interval: 3472.00 ft (KB) To 3496.00 ft (KB) (TVD)
 Total Depth: 3540.00 ft (KB) (TVD)
 Hole Diameter: 7.88 inches Hole Condition: Fair

Reference Elevations: 1982.00 ft (KB)
 1975.00 ft (CF)
 KB to GR/CF: 7.00 ft

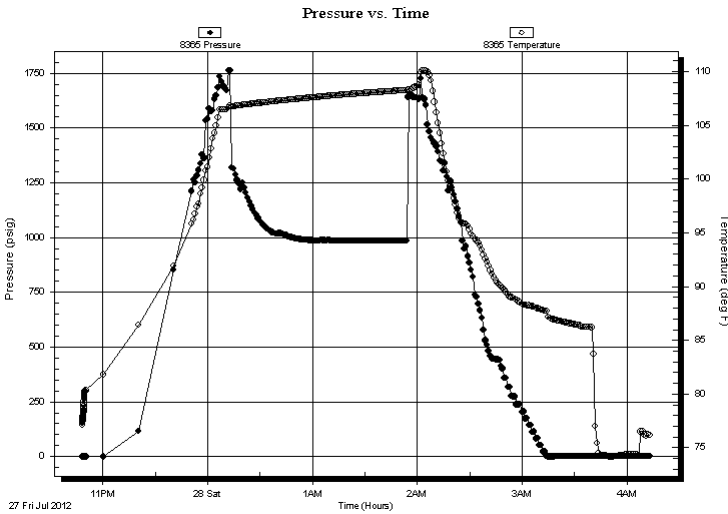
Serial #: 8365 Below (Straddle)

Press @ Run Depth: psig @ 3508.00 ft (KB)
 Start Date: 2012.07.27 End Date: 2012.07.28
 Start Time: 22:48:28 End Time: 04:12:57

Capacity: 8000.00 psig
 Last Calib.: 2012.07.28
 Time On Btm:
 Time Off Btm:

TEST COMMENT: IFP - BOB 40 sec
 ISI - no blow back
 FFP - BOB 45 sec
 FSI - no blow back

PRESSURE SUMMARY



Time (Min.)	Pressure (psig)	Temp (deg F)	Annotation

Recovery

Length (ft)	Description	Volume (bbl)
620.00	VSOCMW 2%O, 93%W, 5%M	8.70
295.00	WM 20%W, 80%M	4.14

* Recovery from multiple tests

Gas Rates

Choke (inches)	Pressure (psig)	Gas Rate (Mcf/d)



**TRILOBITE
TESTING, INC.**

DRILL STEM TEST REPORT

FLUID SUMMARY

Venture Resources Inc

2 11s 18w Ellis

2255 S Wadsworth STE 205
Lakewood CO 80227

Cross # 14

Job Ticket: 49279

DST#: 2

ATTN: Greg Mackey

Test Start: 2012.07.27 @ 22:48:31

Mud and Cushion Information

Mud Type: Gel Chem

Cushion Type:

Oil API:

deg API

Mud Weight: 9.00 lb/gal

Cushion Length:

ft

Water Salinity:

39000 ppm

Viscosity: 63.00 sec/qt

Cushion Volume:

bbbl

Water Loss: 7.99 in³

Gas Cushion Type:

Resistivity: ohm.m

Gas Cushion Pressure:

psig

Salinity: 5200.00 ppm

Filter Cake: inches

Recovery Information

Recovery Table

Length ft	Description	Volume bbl
620.00	VSOCMW 2%O, 93%W, 5%M	8.697
295.00	WM 20%W, 80%M	4.138

Total Length: 915.00 ft

Total Volume: 12.835 bbl

Num Fluid Samples: 0

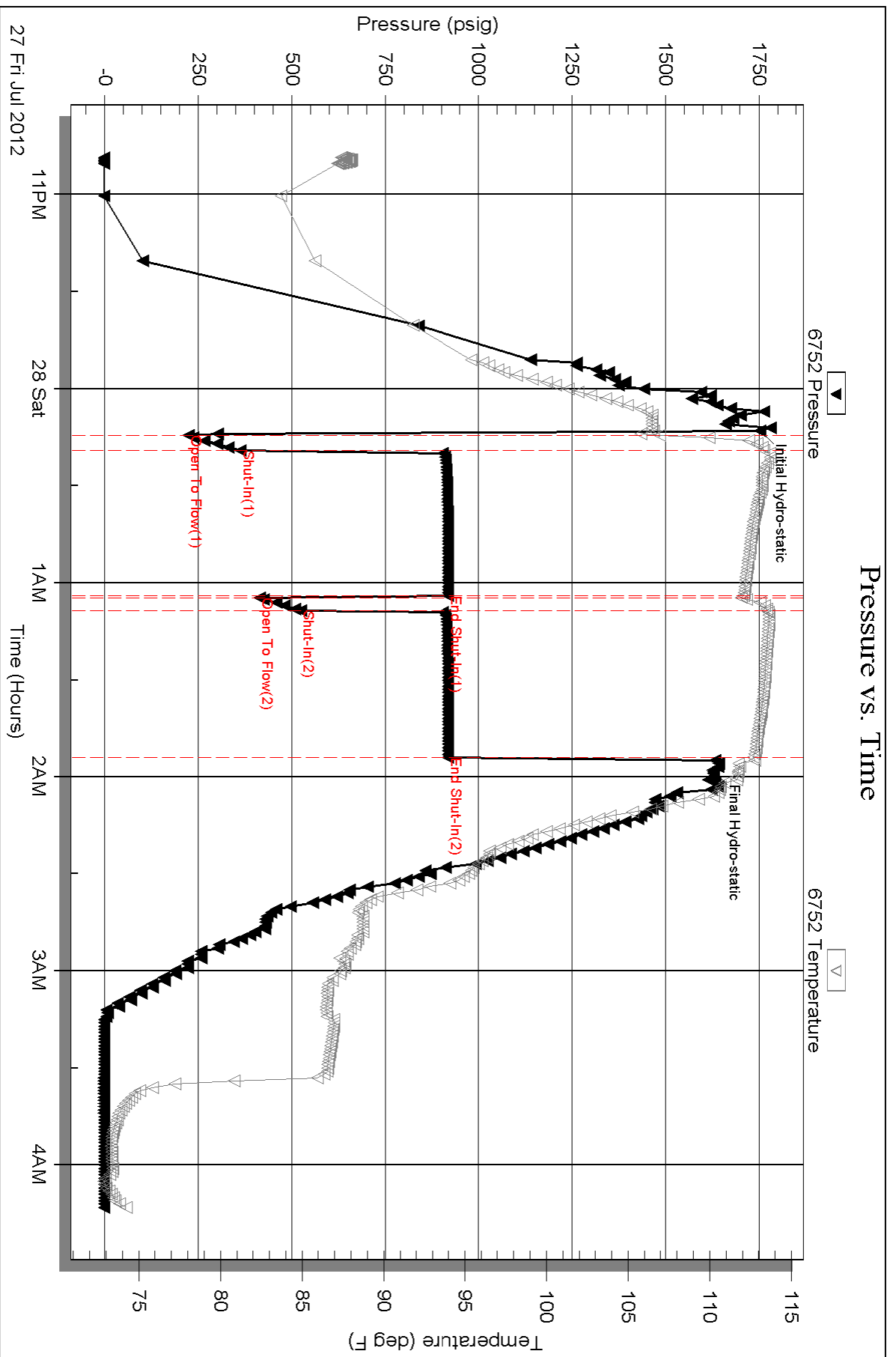
Num Gas Bombs: 0

Serial #:

Laboratory Name:

Laboratory Location:

Recovery Comments:



Serial #: 6741

Outside Venture Resources Inc

Cross #14

DST Test Number: 2

