



DIGITAL LOG (785) 625-3858

Radiation Guard Log

15-051-26,341-00-00

API No.

Company Venture Resources, Inc.

Well Cross No. 14

Field Bemis-Shutts

County Ellis State

Kansas

Location

SW SE SW
330' FSL & 3,630' FEL

Other Services
None

Sec: 2 Twp: 11S Rge: 18W

Permanent Datum Ground Level Elevation 1975
Log Measured From Kelly Bushing 7 Ft. Above Perm. Datum

Drilling Measured From Kelly Bushing

Elevation

K.B. 1982
D.F. 1975
G.L. 1975

Date 7/27/2012

Run Number One

Depth Driller 3540

Depth Logger 3542

Bottom Logged Interval 3541

Top Log Interval 250

Casing Driller 8.625 @ 273

Casing Logger 273

Bit Size 7.875

Type Fluid in Hole Chemical

Salinity, ppm CL 5200

Density / Viscosity 9.1 63

pH / Fluid Loss 10.0 8.0

Source of Sample Flowline

Rm @ Meas. Temp .31 @ 91

Rmf @ Meas. Temp .23 @ 91

Rmc @ Meas. Temp .42 @ 91

Source of Rmf / Rmc Charts

Rm @ BHT .25 @ 111

Operating Rig Time 2 1/2 Hours

Max Rec. Temp. F 111

Equipment Number 108

Location Hays

Recorded By J. Long

Witnessed By Greg Mackey

<<< Fold Here >>>

All interpretations are opinions based on inferences from electrical or other measurements and we cannot and do not guarantee the accuracy or correctness of any interpretation, and we shall not, except in the case of gross or willful negligence on our part, be liable or responsible for any loss, costs, damages, or expenses incurred or sustained by anyone resulting from any interpretation made by any of our officers, agents or employees. These interpretations are also subject to our general terms and conditions set out in our current Price Schedule.

Comments

Thank you for using Log-Tech, Inc.
(785) 625-3858

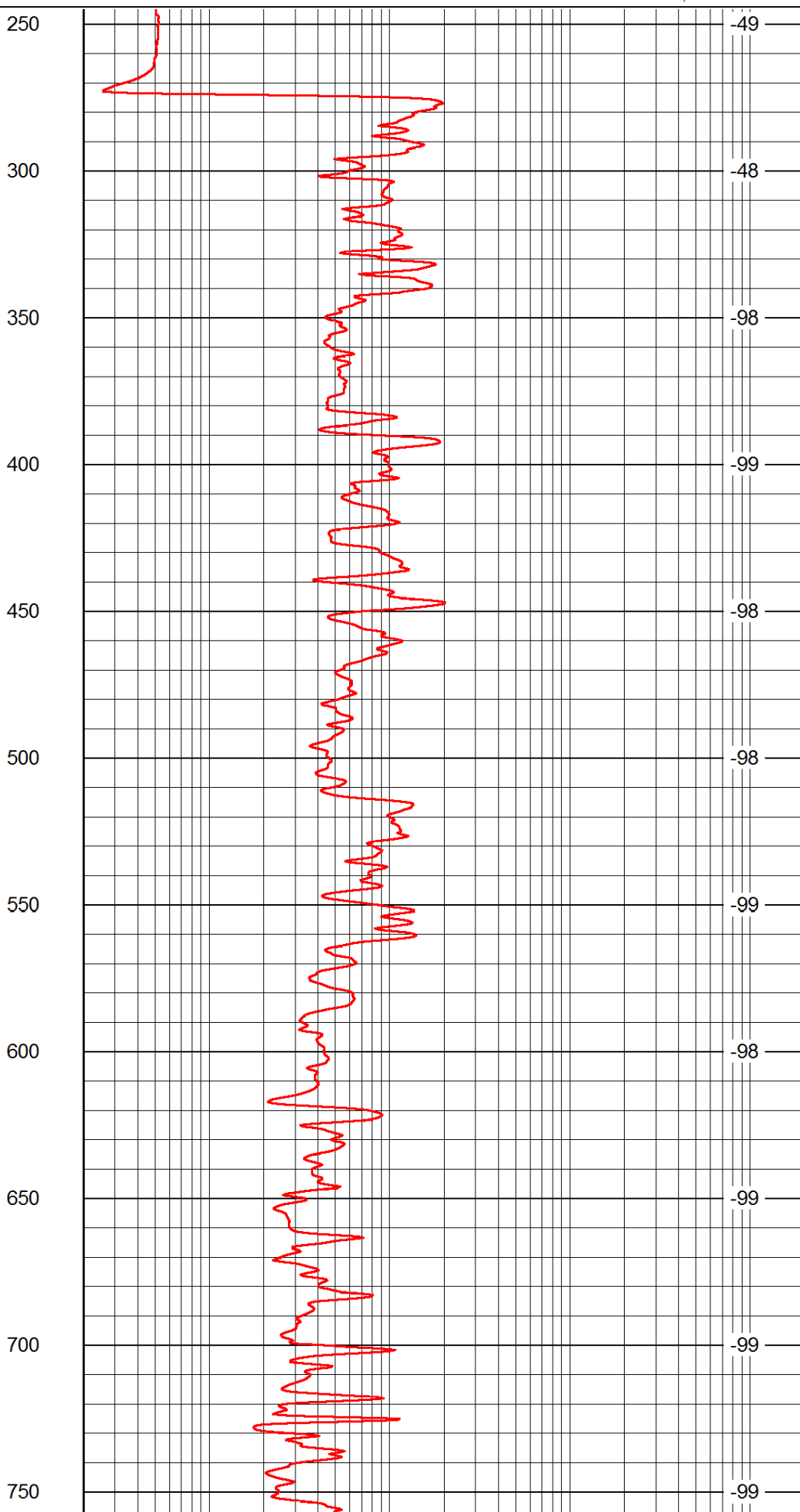
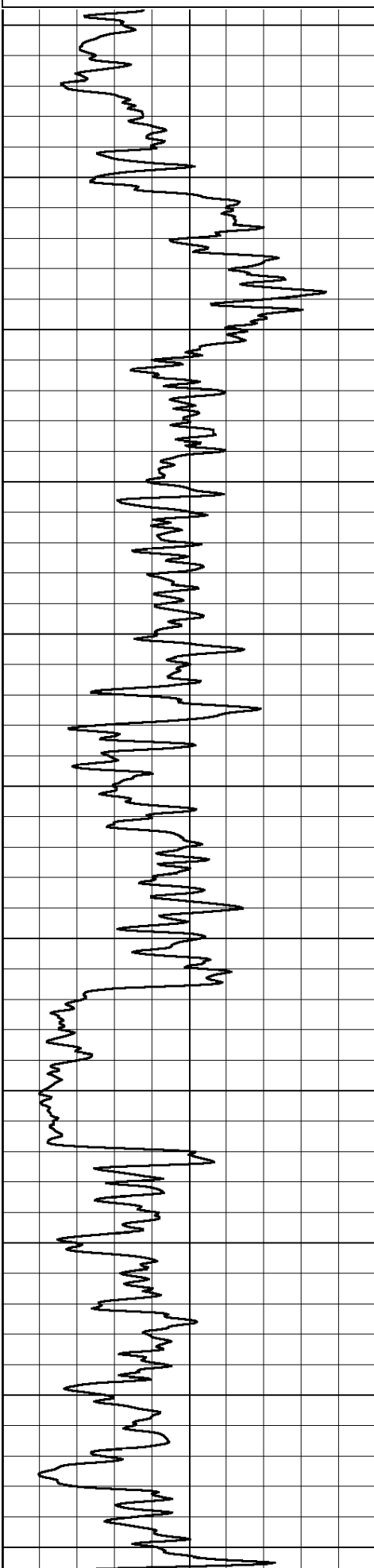
Hays, North to Saline River Road, 1 North to Lease Road, East to Cattle Guard,
3/4 South (Keep Right at Fork)

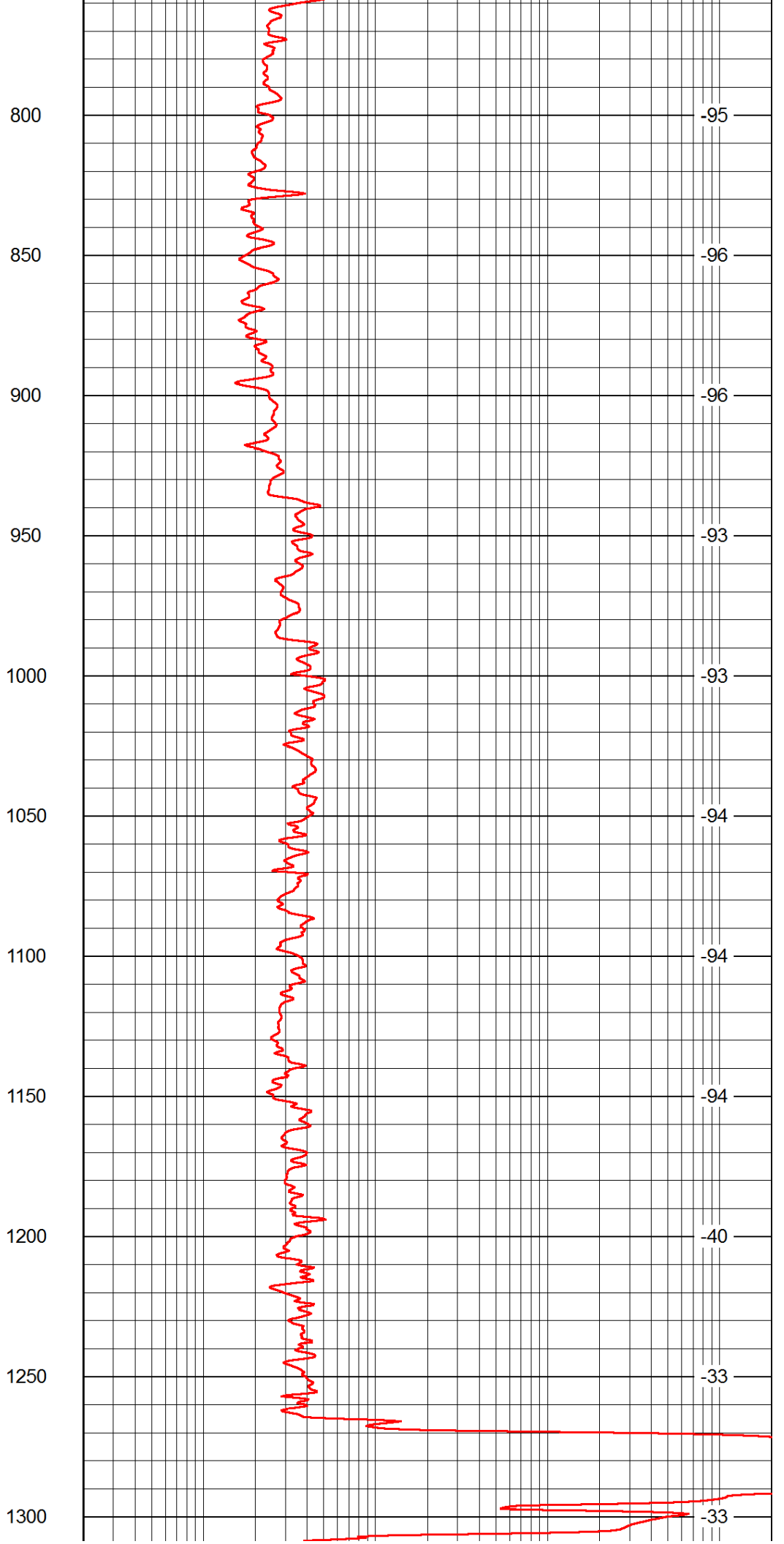
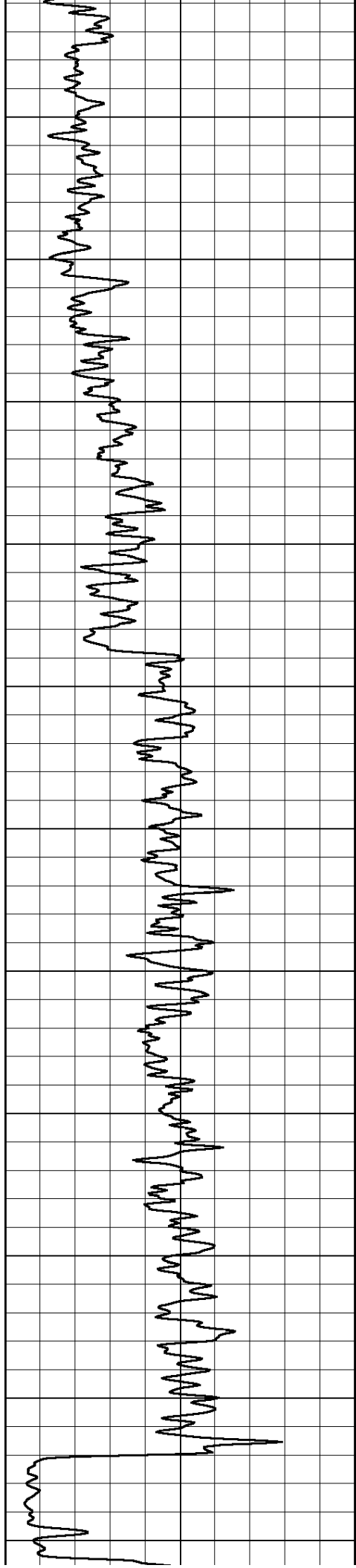
Database File: c:\warrior\data\venture_cross no. 14\venture_cross_14hd.db
Dataset Pathname: rag/ventrag
Presentation Format: rag2in
Dataset Creation: Fri Jul 27 17:42:19 2012
Charted by: Depth in Feet scaled 1:600

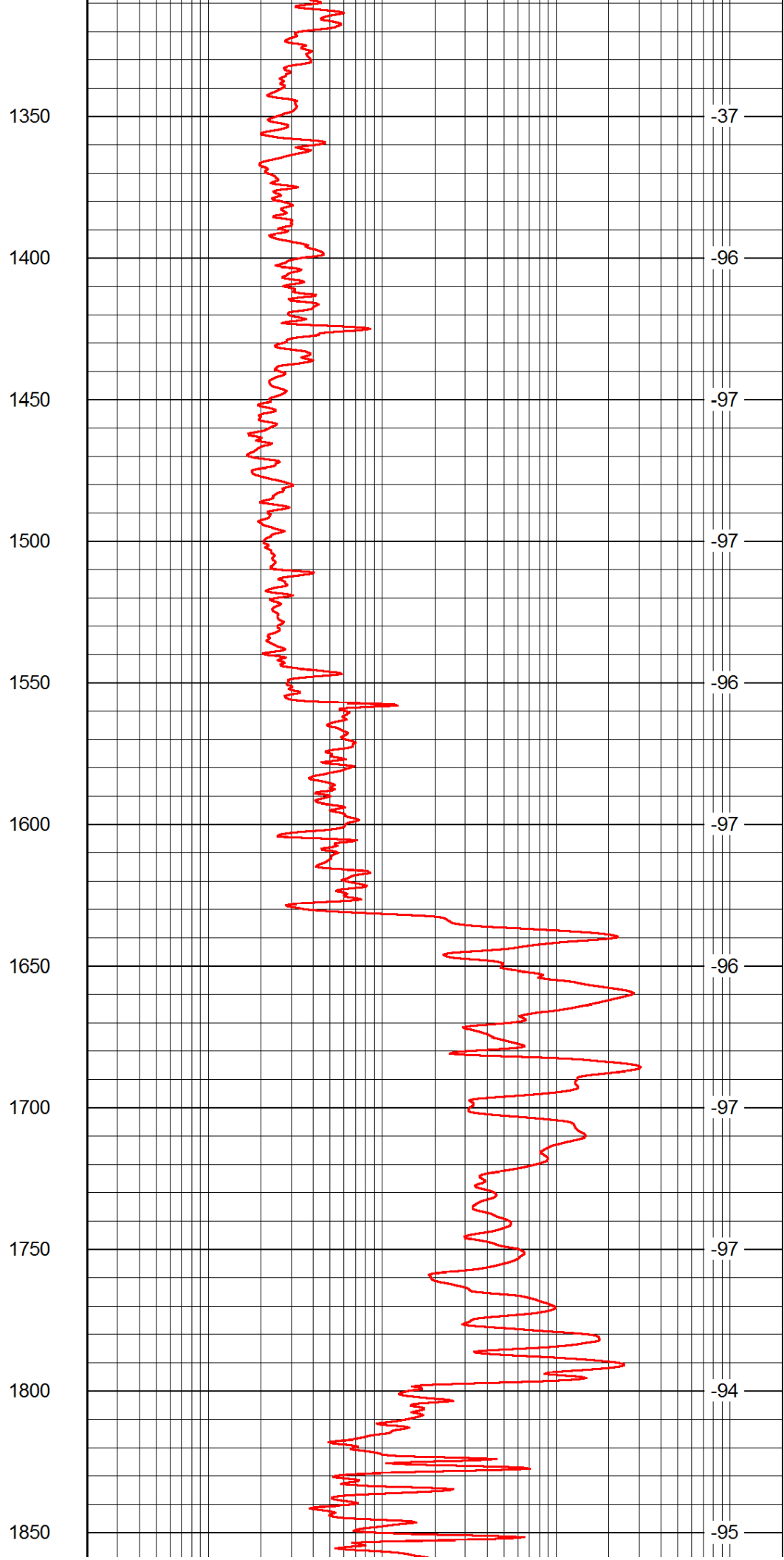
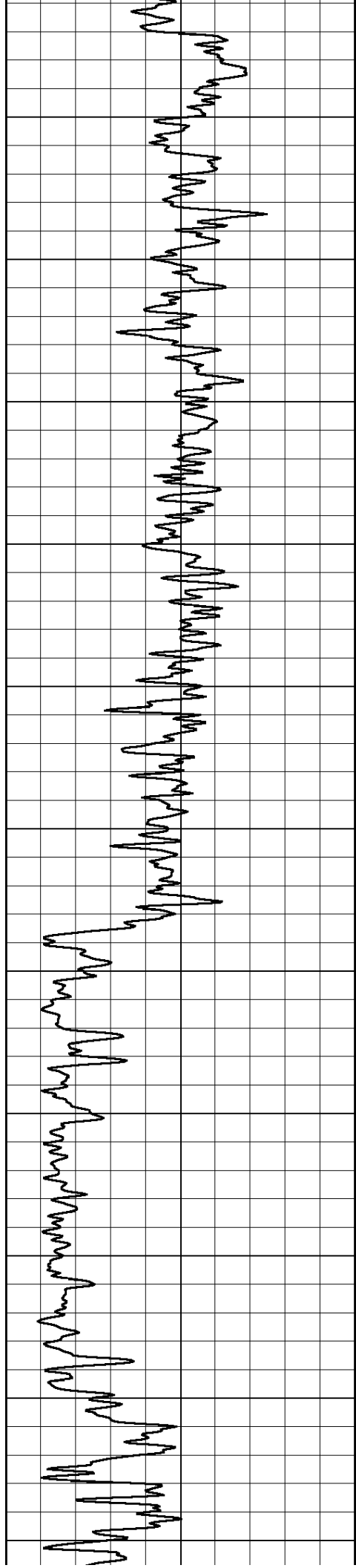
0 Gamma Ray 150

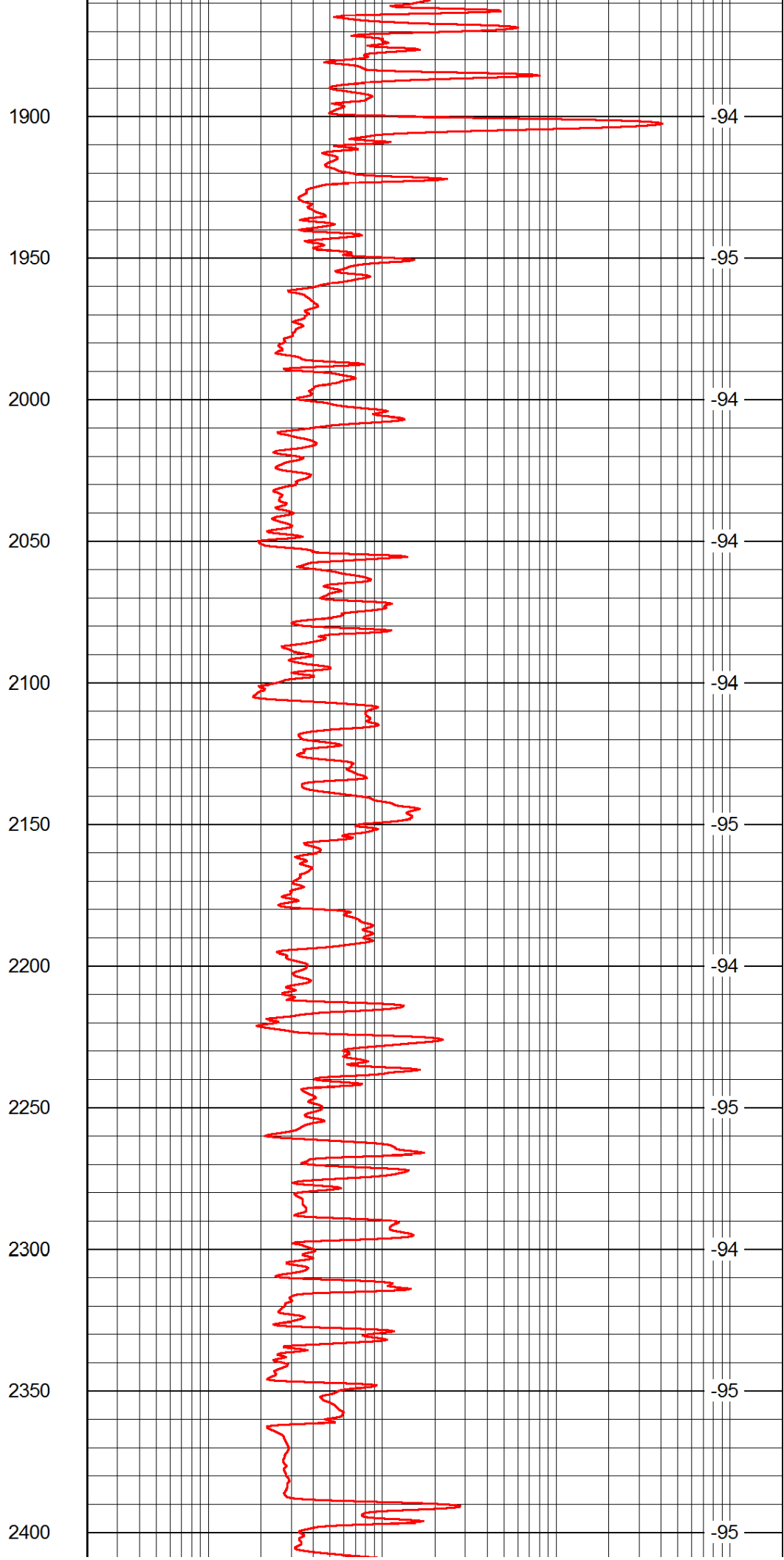
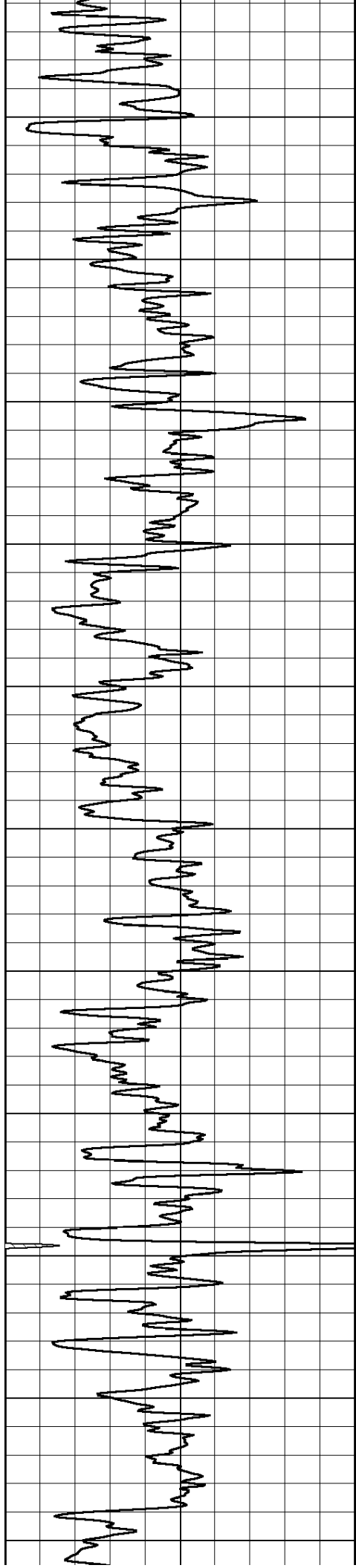
0.2 lgrd 2000

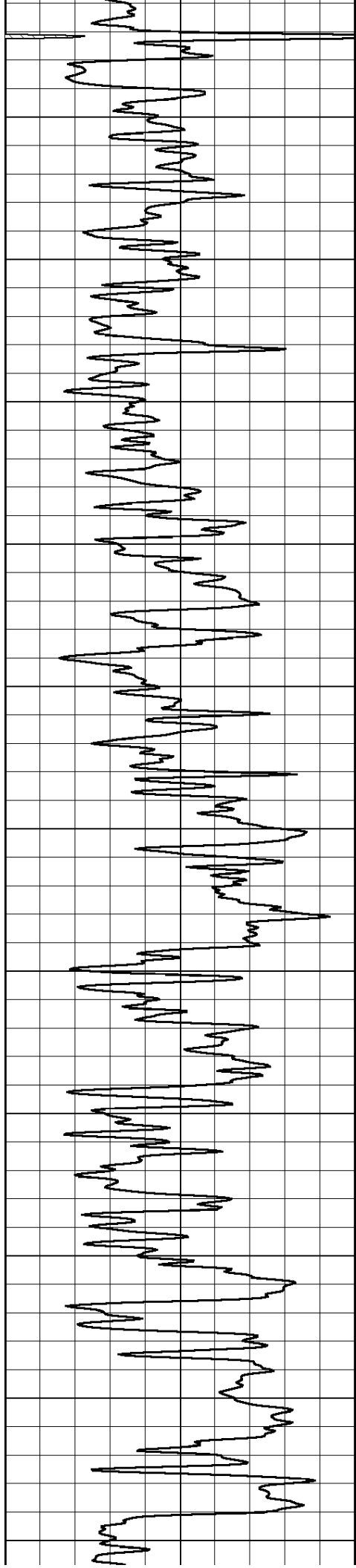
LSPD











2450

2500

2550

2600

2650

2700

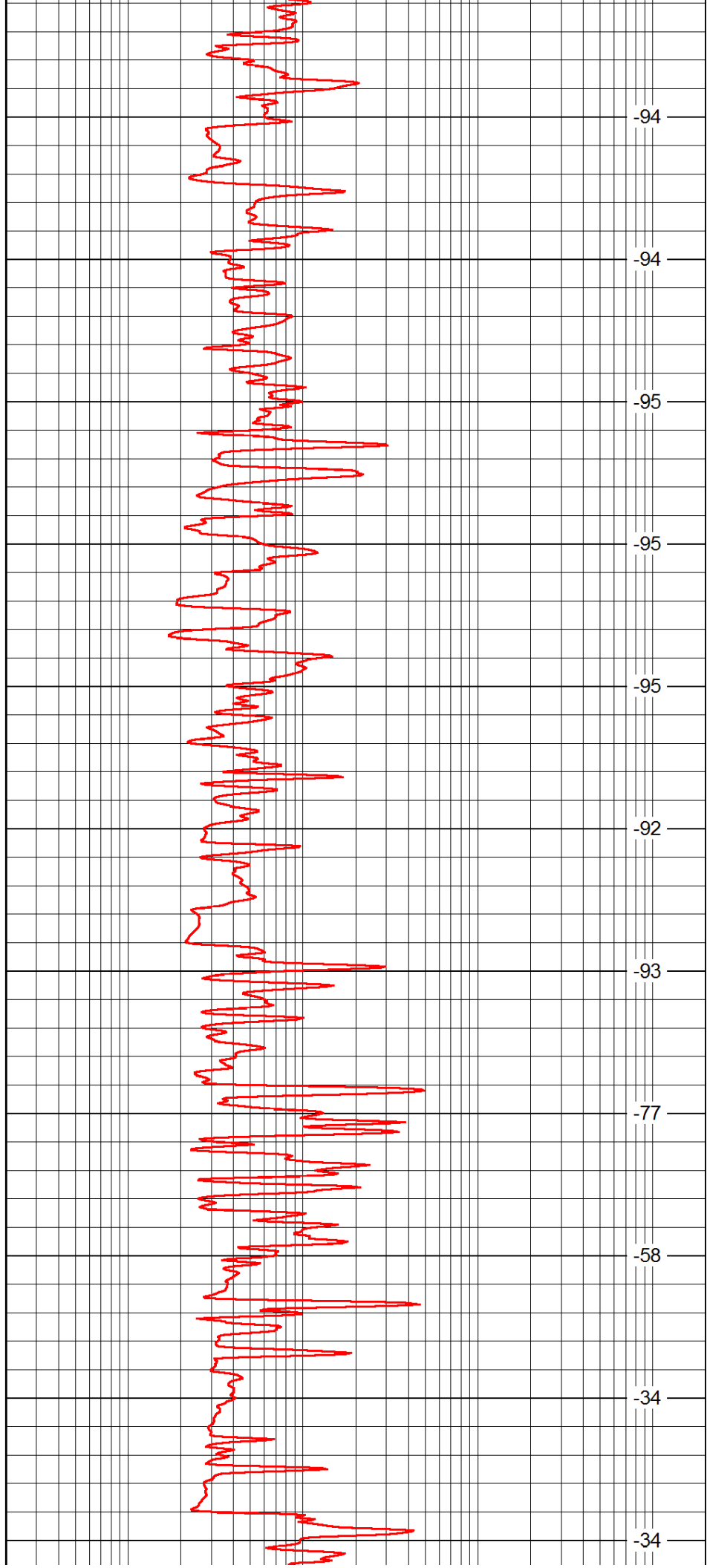
2750

2800

2850

2900

2950



-94

-94

-95

-95

-95

-92

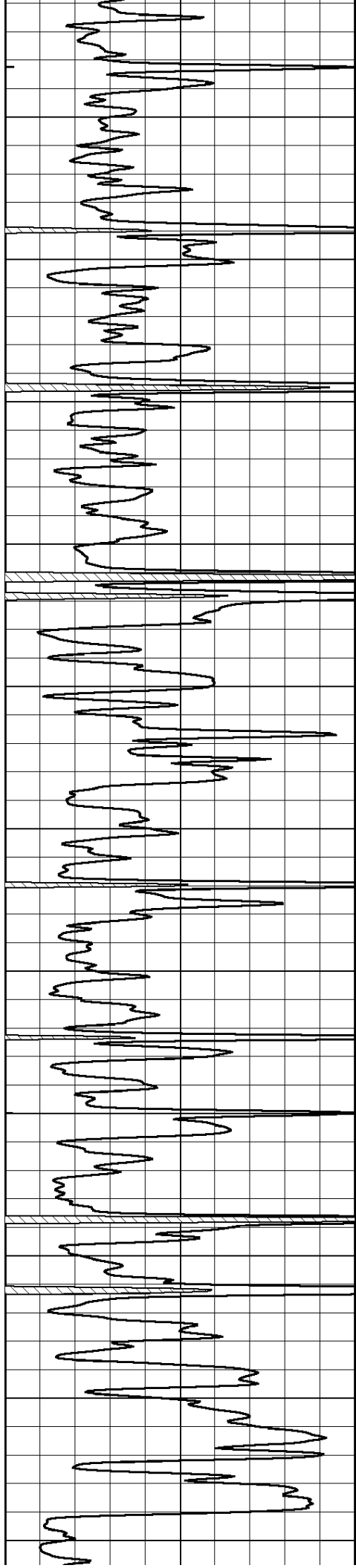
-93

-77

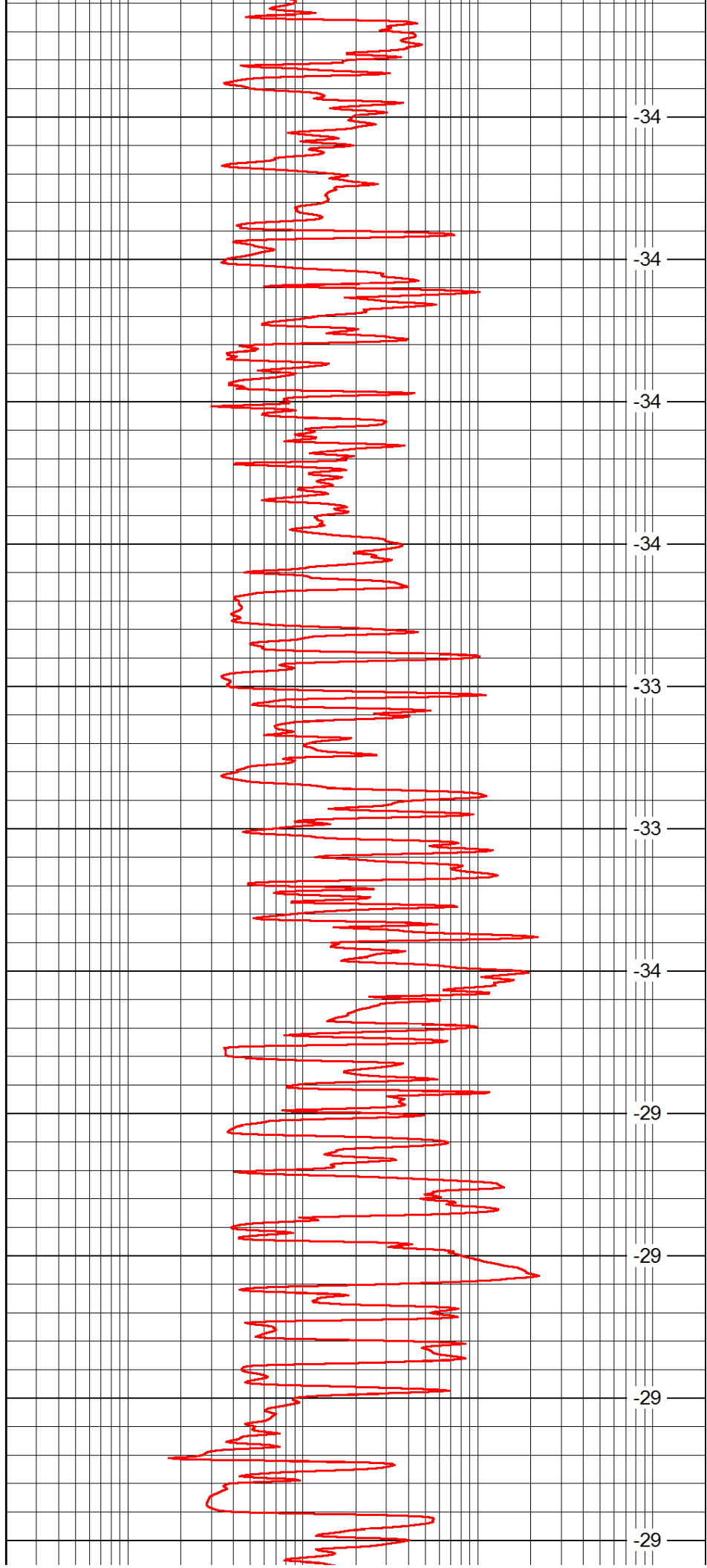
-58

-34

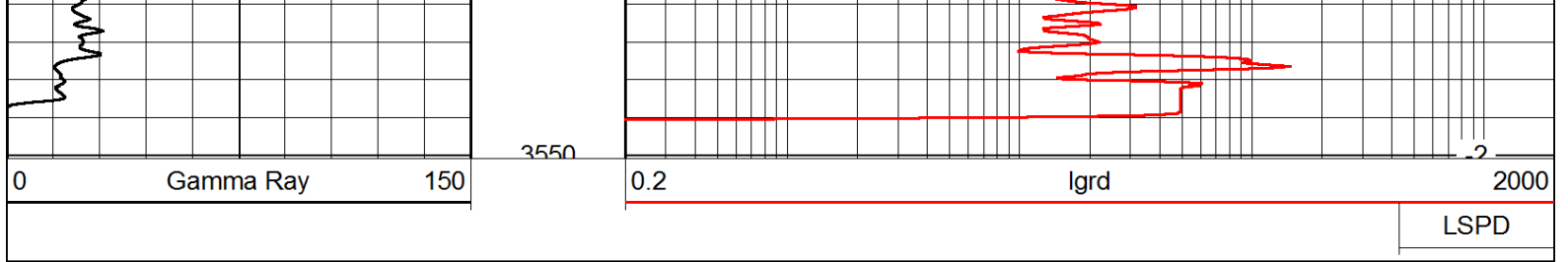
-34



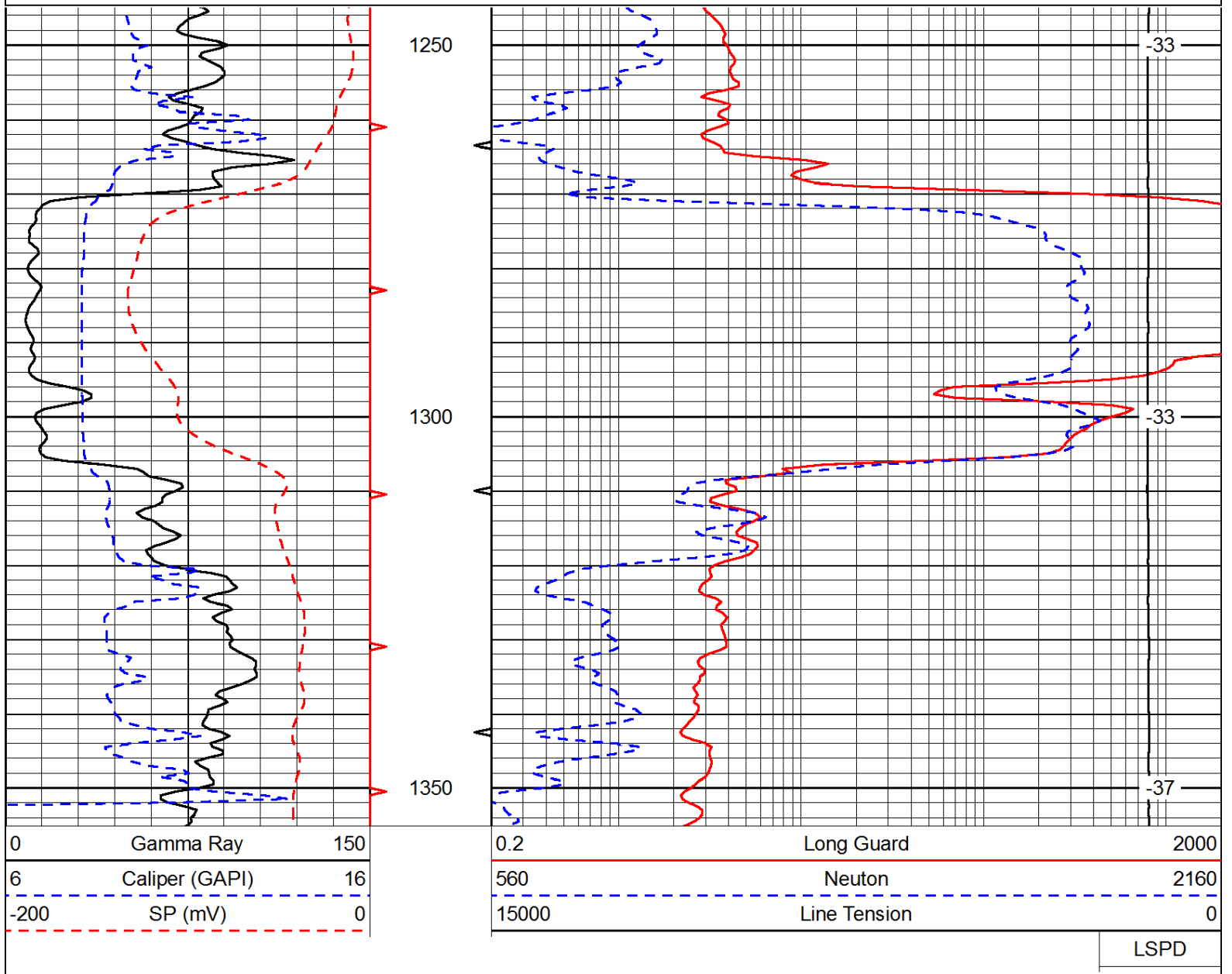
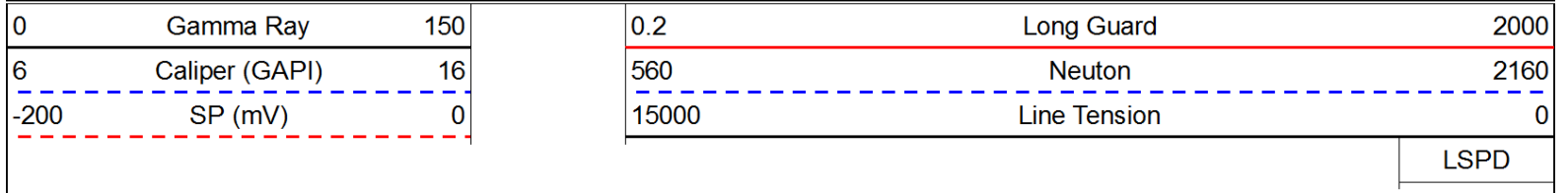
3000
3050
3100
3150
3200
3250
3300
3350
3400
3450
3500



-34
-34
-34
-34
-33
-33
-34
-29
-29
-29
-29



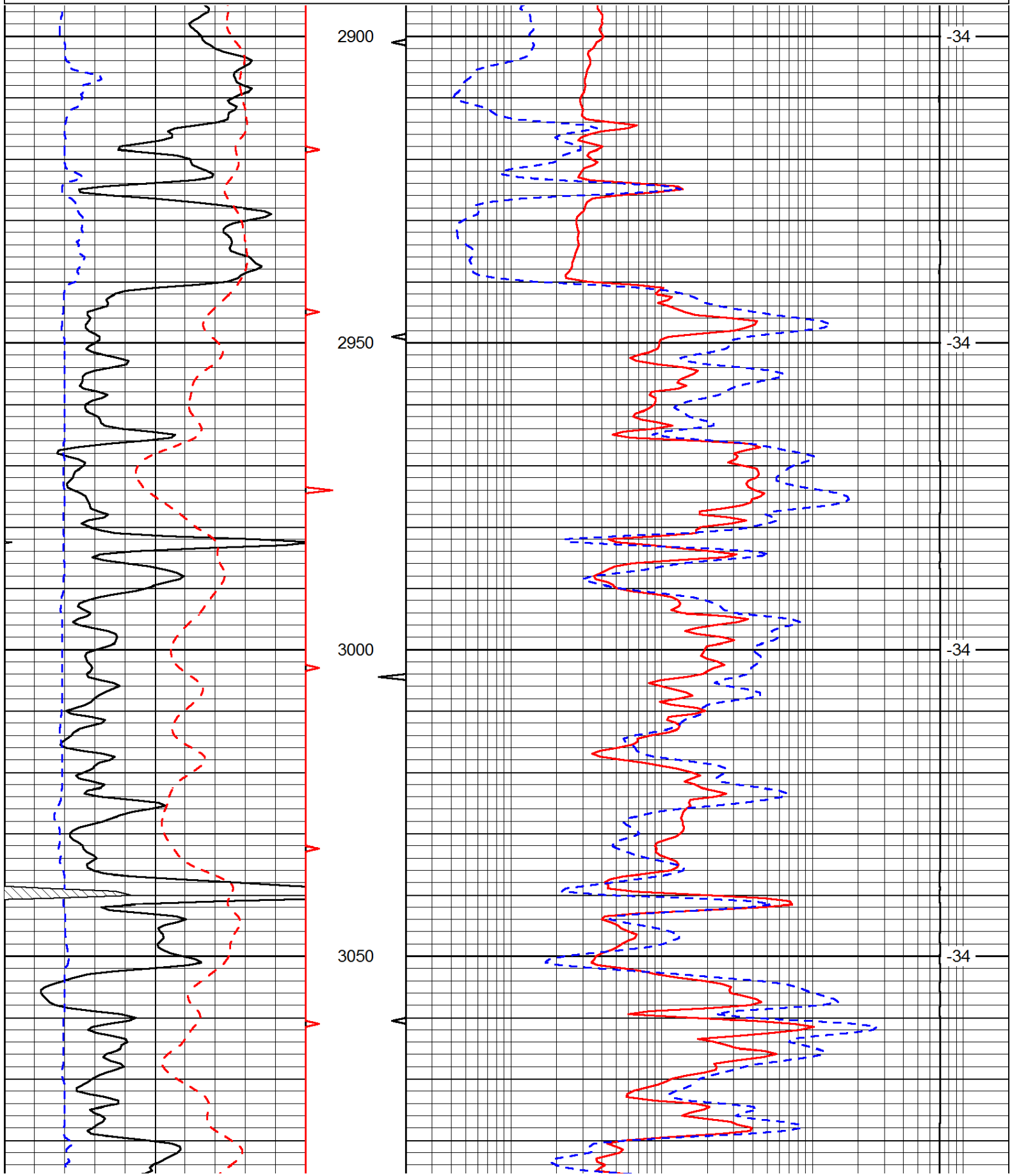
Database File: c:\warrior\data\venture_cross no. 14\venture_cross_14hd.db
 Dataset Pathname: rag/ventrag
 Presentation Format: rag
 Dataset Creation: Fri Jul 27 17:42:19 2012
 Charted by: Depth in Feet scaled 1:240

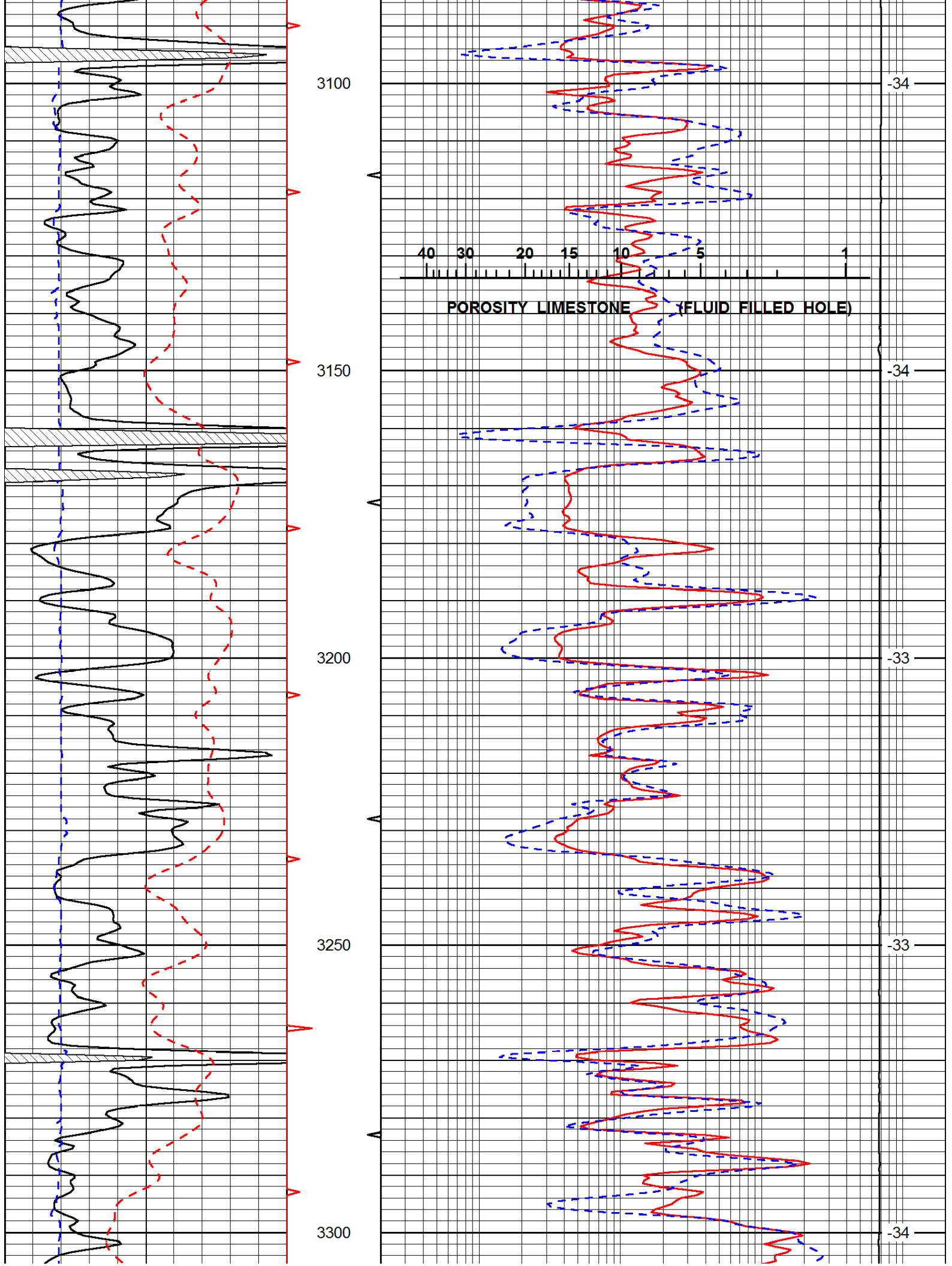


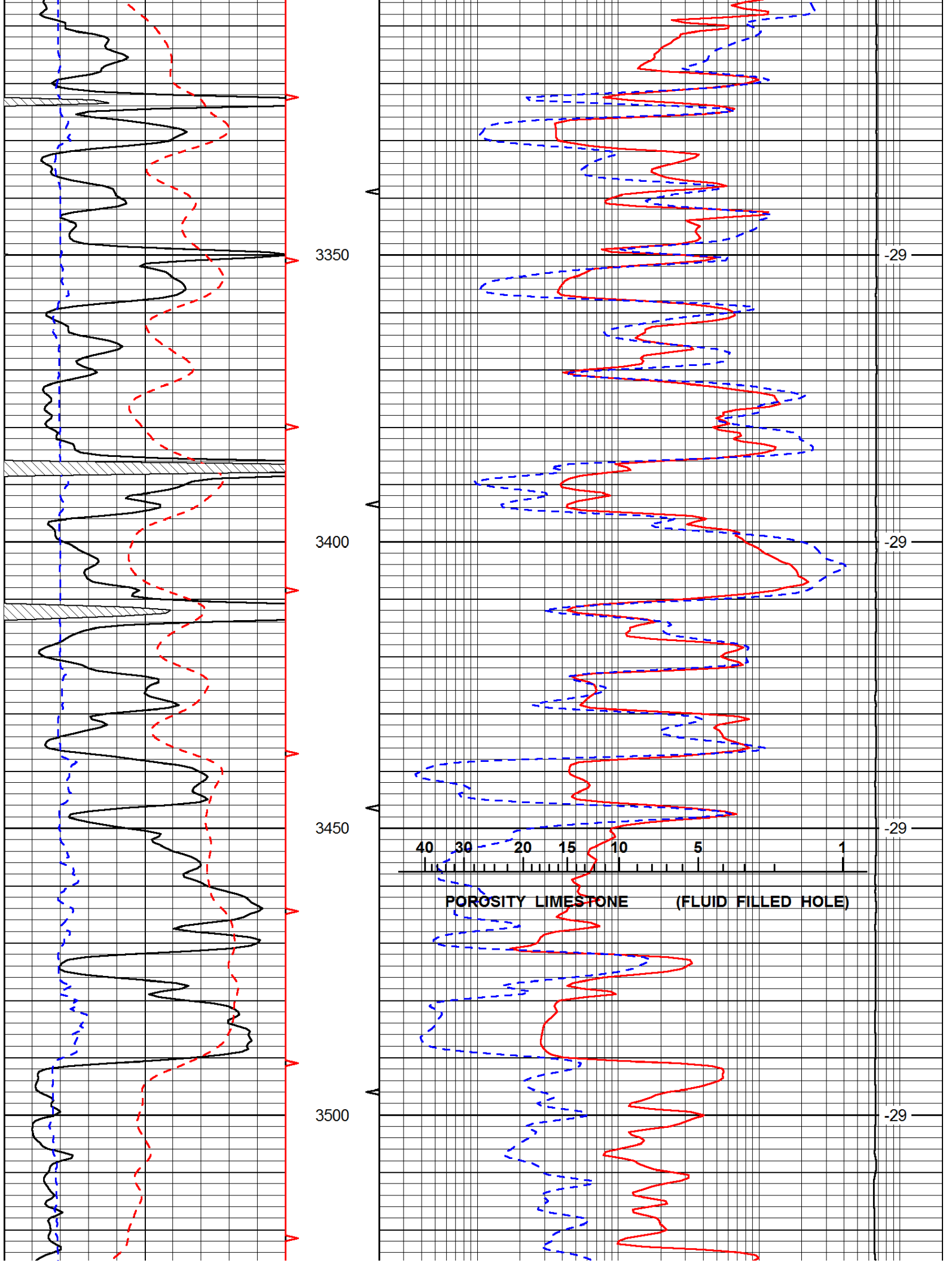
Database File: c:\warrior\data\venture_cross no. 14\venture_cross_14hd.db
 Dataset Pathname: rag/ventrag
 Presentation Format: rag

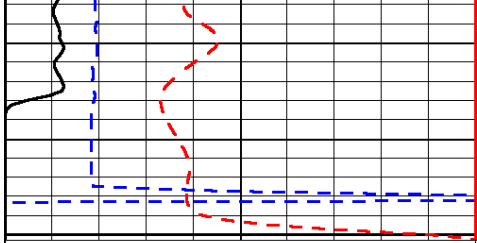
0	Gamma Ray	150	0.2	Long Guard	2000
6	Caliper (GAPI)	16	560	Neutron	2160
-200	SP (mV)	0	15000	Line Tension	0

LSPD



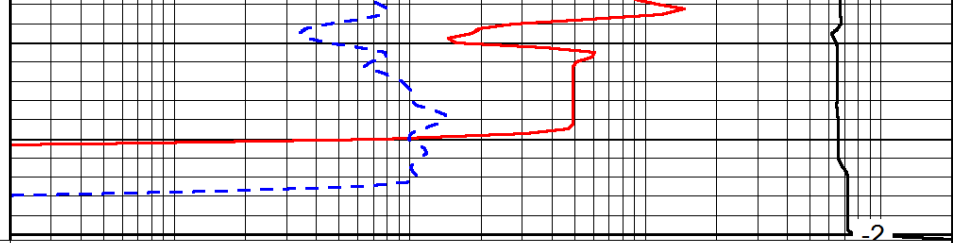






0	Gamma Ray	150
6	Caliper (GAPI)	16
-200	SP (mV)	0

3550



0.2	Long Guard	2000
560	Neutron	2160
15000	Line Tension	0

LSPD