



**TRILOBITE TESTING, INC.**

# DRILL STEM TEST REPORT

Comanche Resources Company

**31/32s/8e Cowley KS**

6520 Western Ave. STE 300  
Oklahoma City OK 73116

**Hoppy #31-1**

Job Ticket: 47732

**DST#: 3**

ATTN: Sean Deenhain/ Micke

Test Start: 2012.04.22 @ 23:02:16

## GENERAL INFORMATION:

Formation: **Cherokee**

Deviated: No Whipstock: ft (KB)

Time Tool Opened: 00:41:34

Time Test Ended: 11:11:48

Test Type: Conventional Bottom Hole (Reset)

Tester: Kevin Taylor

Unit No: 47

**Interval: 2473.00 ft (KB) To 2534.00 ft (KB) (TVD)**

Reference Elevations: 1279.00 ft (KB)

Total Depth: 2534.00 ft (KB) (TVD)

1270.00 ft (CF)

Hole Diameter: 7.88 inches Hole Condition: Fair

KB to GR/CF: 9.00 ft

**Serial #: 6773 Outside**

Press @ Run Depth: 97.16 psig @ 2477.00 ft (KB)

Capacity: 8000.00 psig

Start Date: 2012.04.22

End Date: 2012.04.23

Last Calib.: 2012.04.23

Start Time: 23:02:21

End Time: 11:11:49

Time On Btm: 2012.04.23 @ 00:36:34

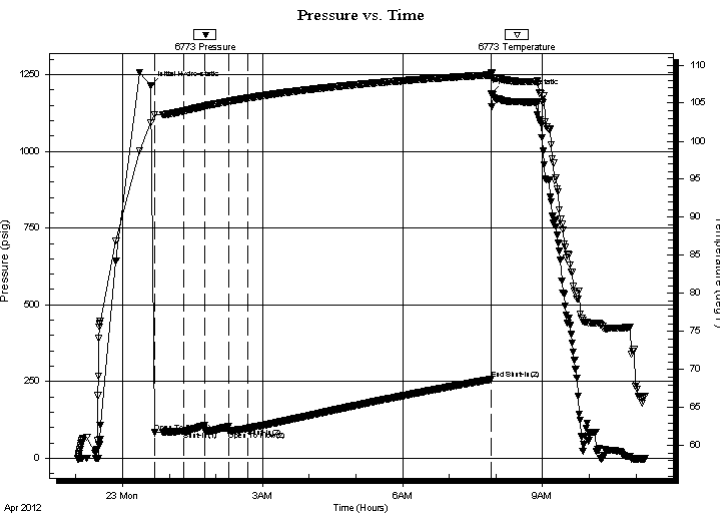
Time Off Btm: 2012.04.23 @ 07:54:19

**TEST COMMENT:** I.F Weak Surface Blow Died In 5 Min

I.S.I. No Blow

F.F. No Blow

F.S.I No Blow



## PRESSURE SUMMARY

Time (Min.)	Pressure (psig)	Temp (deg F)	Annotation
0	1213.79	102.43	Initial Hydro-static
5	83.56	103.44	Open To Flow (1)
42	87.49	103.98	Shut-In(1)
69	106.59	104.60	End Shut-In(1)
100	88.77	105.22	Open To Flow (2)
124	97.16	105.65	Shut-In(2)
438	257.18	108.71	End Shut-In(2)
438	1189.10	109.04	Final Hydro-static

## Recovery

Length (ft)	Description	Volume (bbl)
7.00	Oil Spotted Mud	0.05

\* Recovery from multiple tests

## Gas Rates

Choke (inches)	Pressure (psig)	Gas Rate (Mcf/d)



**TRILOBITE  
TESTING, INC.**

# DRILL STEM TEST REPORT

**FLUID SUMMARY**

Comanche Resources Company

**31/32s/8e Cowley KS**

6520 Western Ave. STE 300  
Oklahoma City OK 73116

**Hoppy #31-1**

Job Ticket: 47732

**DST#: 3**

ATTN: Sean Deenhain/ Micke

Test Start: 2012.04.22 @ 23:02:16

## Mud and Cushion Information

Mud Type: Gel Chem

Cushion Type:

Oil API:

deg API

Mud Weight: 9.00 lb/gal

Cushion Length:

ft

Water Salinity:

ppm

Viscosity: 50.00 sec/qt

Cushion Volume:

bbbl

Water Loss: 6.00 in<sup>3</sup>

Gas Cushion Type:

Resistivity: ohm.m

Gas Cushion Pressure:

psig

Salinity: 1200.00 ppm

Filter Cake: 0.02 inches

## Recovery Information

Recovery Table

Length ft	Description	Volume bbl
7.00	Oil Spotted Mud	0.051

Total Length: 7.00 ft      Total Volume: 0.051 bbl

Num Fluid Samples: 0

Num Gas Bombs: 0

Serial #:

Laboratory Name:

Laboratory Location:

Recovery Comments:

Serial #: 6773

Outside Comanche Resources Company

Hoppy #31-1

DST Test Number: 3

### Pressure vs. Time

