



**TRILOBITE  
TESTING, INC.**

# DRILL STEM TEST REPORT

Samuel Gary, JR and Associates

**33-15s-15w Russell KS**

1515 Wynkoop st  
Suite 700 Denver Co 80202

**Dumler Trust 1-33**

Job Ticket: 46317

**DST#: 3**

ATTN: Clayton Camozzi

Test Start: 2012.04.23 @ 21:41:00

## GENERAL INFORMATION:

Formation: **Arbuckle**

Deviated: No Whipstock: ft (KB)

Time Tool Opened: 23:30:30

Time Test Ended: 04:25:00

Test Type: Conventional Straddle (Reset)

Tester: Cody Bloedorn

Unit No: 44

**Interval: 3450.00 ft (KB) To 3460.00 ft (KB) (TVD)**

Reference Elevations: 1929.00 ft (KB)

Total Depth: 3550.00 ft (KB) (TVD)

1919.00 ft (CF)

Hole Diameter: 7.88 inches Hole Condition: Good

KB to GR/CF: 10.00 ft

**Serial #: 8321 Inside**

Press @ Run Depth: 26.55 psig @ 3451.00 ft (KB)

Capacity: 8000.00 psig

Start Date: 2012.04.23

End Date:

2012.04.24

Last Calib.:

2012.04.24

Start Time: 21:41:01

End Time:

04:25:00

Time On Btm:

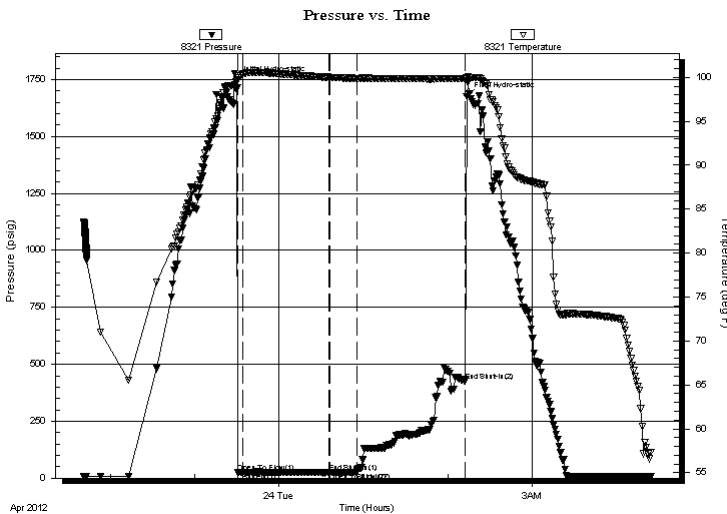
2012.04.23 @ 23:30:00

Time Off Btm:

2012.04.24 @ 02:13:30

**TEST COMMENT:** 05 - IF- 1" blow  
60 - IS- No blow back  
20 - FF- No blow  
75 - FS- No blow back

## PRESSURE SUMMARY



Time (Min.)	Pressure (psig)	Temp (deg F)	Annotation
0	1747.34	98.70	Initial Hydro-static
1	25.99	98.84	Open To Flow (1)
5	25.97	100.42	Shut-In(1)
66	25.80	100.02	End Shut-In(1)
66	25.83	100.02	Open To Flow (2)
86	26.55	99.89	Shut-In(2)
163	427.18	99.87	End Shut-In(2)
164	1675.09	100.01	Final Hydro-static

## Recovery

Length (ft)	Description	Volume (bbl)
2.00	Mud, 100%M	0.03

## Gas Rates

Choke (inches)	Pressure (psig)	Gas Rate (Mcf/d)

\* Recovery from multiple tests









**TRILOBITE  
TESTING, INC.**

# DRILL STEM TEST REPORT

**FLUID SUMMARY**

Samuel Gary, JR and Associates

**33-15s-15w Russell KS**

1515 Wynkoop st  
Suite 700 Denver Co 80202

**Dumler Trust 1-33**

Job Ticket: 46317

**DST#: 3**

ATTN: Clayton Camozzi

Test Start: 2012.04.23 @ 21:41:00

## Mud and Cushion Information

Mud Type: Gel Chem

Cushion Type:

Oil API:

deg API

Mud Weight: 9.00 lb/gal

Cushion Length:

ft

Water Salinity:

ppm

Viscosity: 59.00 sec/qt

Cushion Volume:

bbbl

Water Loss: 7.99 in<sup>3</sup>

Gas Cushion Type:

Resistivity: ohm.m

Gas Cushion Pressure:

psig

Salinity: 3400.00 ppm

Filter Cake: inches

## Recovery Information

Recovery Table

Length ft	Description	Volume bbl
2.00	Mud, 100%M	0.028

Total Length: 2.00 ft      Total Volume: 0.028 bbl

Num Fluid Samples: 0

Num Gas Bombs: 0

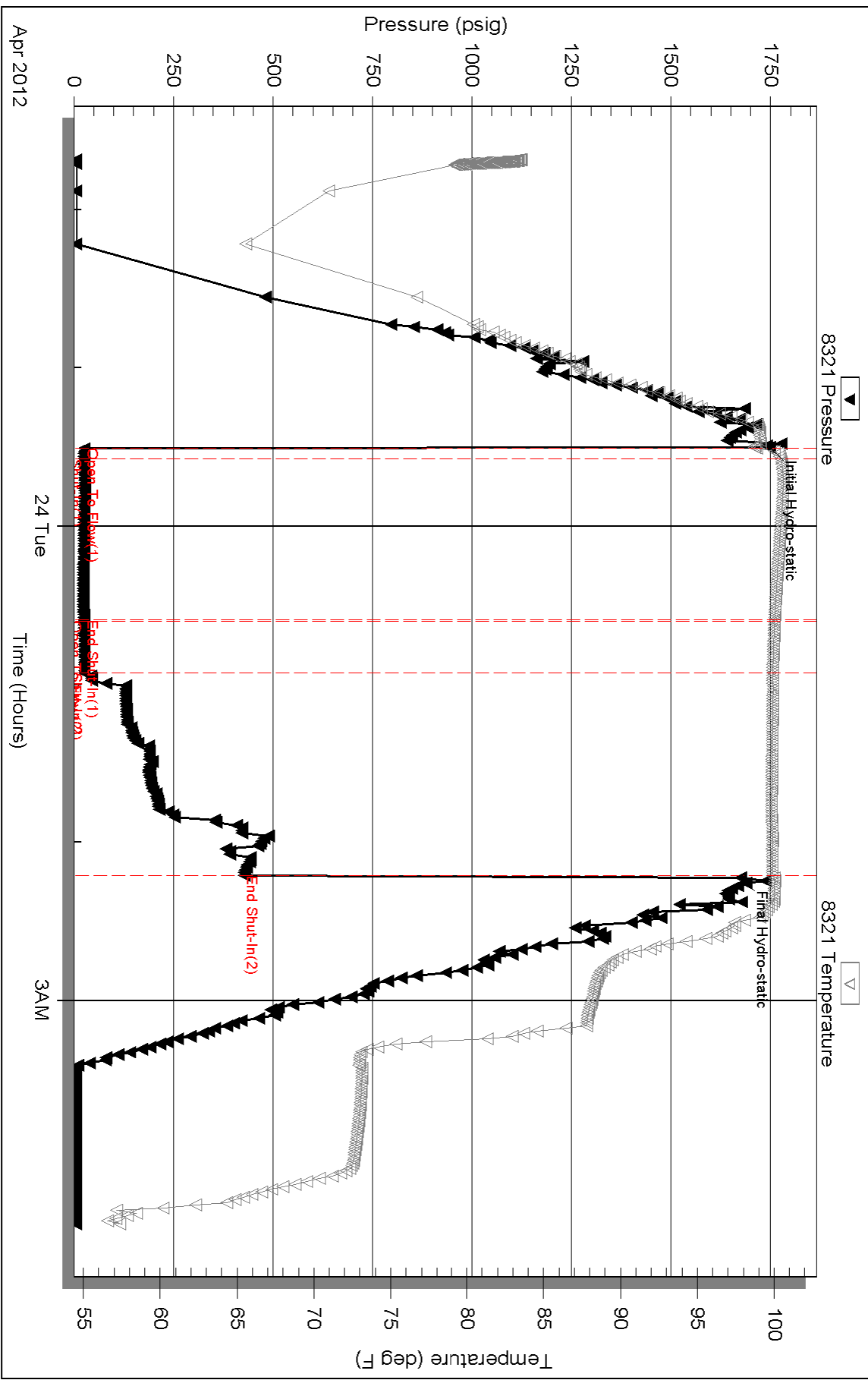
Serial #:

Laboratory Name:

Laboratory Location:

Recovery Comments:

### Pressure vs. Time



Serial #: 8737

Outside Samuel Gary, JR and Associates

Dunler Trust 1-33

DST Test Number: 3

