



## DRILL STEM TEST REPORT

Prepared For: **Samuel Gary Jr. & Associates, Inc.**

1515 Wynkoop Ste. #700  
Denver, CO 80202

ATTN: Clayton Camozzi

**Sandra #1-25**

**25-15s-16w Ellis,KS**

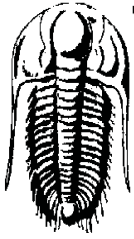
Start Date: 2012.04.24 @ 16:58:15

End Date: 2012.04.24 @ 22:58:15

Job Ticket #: 47222                      DST #: 2

Trilobite Testing, Inc  
PO Box 362 Hays, KS 67601  
ph: 785-625-4778 fax: 785-625-5620

Printed: 2012.04.27 @ 16:17:50



**TRILOBITE TESTING, INC.**

# DRILL STEM TEST REPORT

Samuel Gary Jr. & Associates, Inc.

**25-15s-16w Ellis,KS**

1515 Wynkoop Ste. #700  
Denver, CO 80202

**Sandra #1-25**

Job Ticket: 47222

**DST#: 2**

ATTN: Clayton Camozzi

Test Start: 2012.04.24 @ 16:58:15

## GENERAL INFORMATION:

Formation: **Penn Sand**

Deviated: No Whipstock: ft (KB)

Time Tool Opened: 18:49:25

Time Test Ended: 22:58:15

Test Type: Conventional Bottom Hole (Initial)

Tester: Dustin Rash

Unit No: 38

**Interval: 3346.00 ft (KB) To 3390.00 ft (KB) (TVD)**

Reference Elevations: 1858.00 ft (KB)

Total Depth: 3390.00 ft (KB) (TVD)

1850.00 ft (CF)

Hole Diameter: 7.88 inches Hole Condition: Fair

KB to GR/CF: 8.00 ft

**Serial #: 8354 Inside**

Press@RunDepth: 20.90 psig @ 3350.00 ft (KB)

Capacity: 8000.00 psig

Start Date: 2012.04.24 End Date: 2012.04.24

Last Calib.: 2012.04.24

Start Time: 17:08:15 End Time: 22:58:15

Time On Btm: 2012.04.24 @ 18:49:15

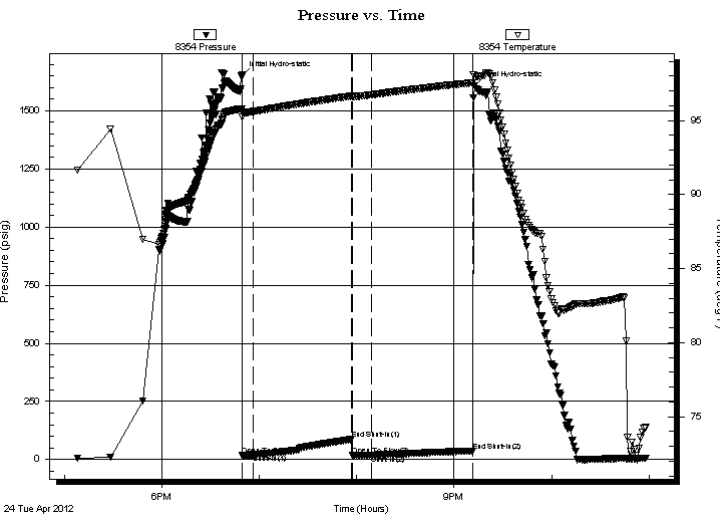
Time Off Btm: 2012.04.24 @ 21:12:45

**TEST COMMENT:** IF-Weak surface blow . Died @ 5 minutes.

ISI-No Return.

FF-No Blow .

FSI-No Return. Times-5-60-10-60



## PRESSURE SUMMARY

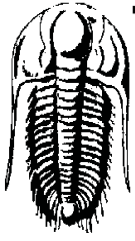
Time (Min.)	Pressure (psig)	Temp (deg F)	Annotation
0	1652.22	95.81	Initial Hydro-static
1	18.64	95.21	Open To Flow (1)
8	22.62	95.61	Shut-In(1)
68	87.47	96.64	End Shut-In(1)
68	20.09	96.62	Open To Flow (2)
80	20.90	96.72	Shut-In(2)
142	37.95	97.54	End Shut-In(2)
144	1606.94	97.93	Final Hydro-static

## Recovery

Length (ft)	Description	Volume (bbl)
3.00	1% Oil/99% Mud	0.02

## Gas Rates

Choke (inches)	Pressure (psig)	Gas Rate (Mcf/d)



**TRILOBITE TESTING, INC.**

# DRILL STEM TEST REPORT

Samuel Gary Jr. & Associates, Inc.

**25-15s-16w Ellis, KS**

1515 Wynkoop Ste. #700  
Denver, CO 80202

**Sandra #1-25**

Job Ticket: 47222

**DST#: 2**

ATTN: Clayton Camozzi

Test Start: 2012.04.24 @ 16:58:15

## GENERAL INFORMATION:

Formation: **Penn Sand**

Deviated: No Whipstock: ft (KB)

Time Tool Opened: 18:49:25

Time Test Ended: 22:58:15

Test Type: Conventional Bottom Hole (Initial)

Tester: Dustin Rash

Unit No: 38

**Interval: 3346.00 ft (KB) To 3390.00 ft (KB) (TVD)**

Reference Elevations: 1858.00 ft (KB)

Total Depth: 3390.00 ft (KB) (TVD)

1850.00 ft (CF)

Hole Diameter: 7.88 inches Hole Condition: Fair

KB to GR/CF: 8.00 ft

**Serial #: 8520 Outside**

Press@RunDepth: psig @ 3350.00 ft (KB)

Capacity: 8000.00 psig

Start Date: 2012.04.24

End Date: 2012.04.24

Last Calib.: 2012.04.24

Start Time: 17:08:30

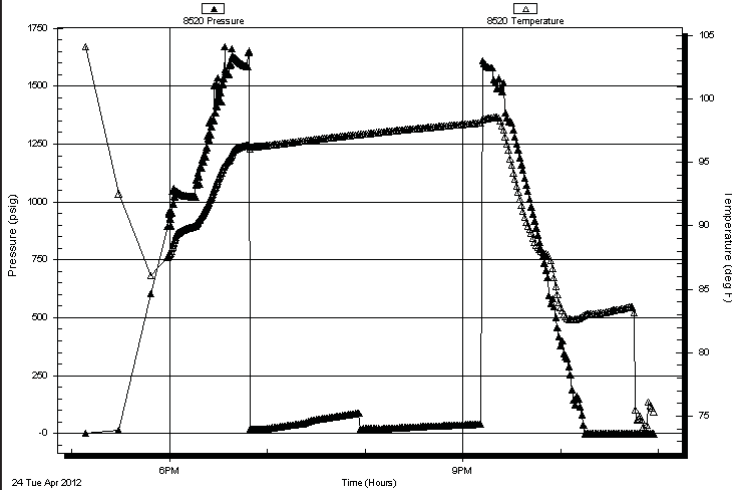
End Time: 22:57:30

Time On Btm:

Time Off Btm:

**TEST COMMENT:** IF-Weak surface blow . Died @ 5 minutes.  
IS-No Return.  
FF-No Blow .  
FS-No Return. Times-5-60-10-60

Pressure vs. Time



## PRESSURE SUMMARY

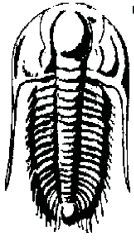
Time (Min.)	Pressure (psig)	Temp (deg F)	Annotation

## Recovery

Length (ft)	Description	Volume (bbl)
3.00	1% Oil/99% Mud	0.02

## Gas Rates

	Choke (inches)	Pressure (psig)	Gas Rate (Mcf/d)



**TRILOBITE TESTING, INC.**

**DRILL STEM TEST REPORT**

Samuel Gary Jr. & Associates, Inc.

**25-15s-16w Ellis,KS**

1515 Wynkoop Ste. #700  
Denver, CO 80202

**Sandra #1-25**

ATTN: Clayton Camozzi

Job Ticket: 47222

**DST#: 2**

Test Start: 2012.04.24 @ 16:58:15

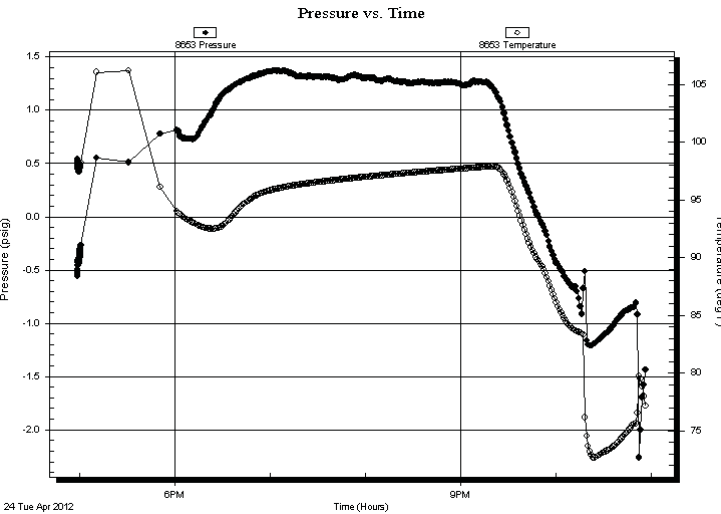
**GENERAL INFORMATION:**

Formation: **Penn Sand**  
 Deviated: No Whipstock: ft (KB)  
 Time Tool Opened: 18:49:25  
 Time Test Ended: 22:58:15  
 Interval: **3346.00 ft (KB) To 3390.00 ft (KB) (TVD)**  
 Total Depth: 3390.00 ft (KB) (TVD)  
 Hole Diameter: 7.88 inches Hole Condition: Fair  
 Test Type: Conventional Bottom Hole (Initial)  
 Tester: Dustin Rash  
 Unit No: 38  
 Reference Elevations: 1858.00 ft (KB)  
 1850.00 ft (CF)  
 KB to GR/CF: 8.00 ft

**Serial #: 8653 Fluid**

Press@RunDepth: psig @ 3316.00 ft (KB)  
 Start Date: 2012.04.24 End Date: 2012.04.24  
 Start Time: 16:58:46 End Time: 22:56:15  
 Capacity: 8000.00 psig  
 Last Calib.: 2012.04.24  
 Time On Btm:  
 Time Off Btm:

**TEST COMMENT:** IF-Weak surface blow . Died @ 5 minutes.  
 IS-No Return.  
 FF-No Blow .  
 FS-No Return. Times-5-60-10-60



**PRESSURE SUMMARY**

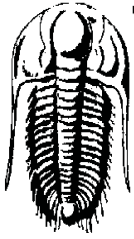
Time (Min.)	Pressure (psig)	Temp (deg F)	Annotation

**Recovery**

Length (ft)	Description	Volume (bbl)
3.00	1% Oil/99% Mud	0.02

**Gas Rates**

Choke (inches)	Pressure (psig)	Gas Rate (Mcf/d)



**TRILOBITE  
TESTING, INC.**

# DRILL STEM TEST REPORT

**TOOL DIAGRAM**

Samuel Gary Jr. & Associates, Inc.

**25-15s-16w Ellis,KS**

1515 Wynkoop Ste. #700  
Denver, CO 80202

**Sandra #1-25**

Job Ticket: 47222

**DST#: 2**

ATTN: Clayton Camozzi

Test Start: 2012.04.24 @ 16:58:15

## Tool Information

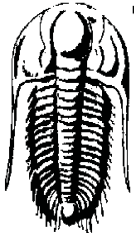
Drill Pipe:	Length: 3316.00 ft	Diameter: 3.80 inches	Volume: 46.51 bbl	Tool Weight: 3000.00 lb
Heavy Wt. Pipe:	Length: 0.00 ft	Diameter: 2.25 inches	Volume: 0.00 bbl	Weight set on Packer: 28000.00 lb
Drill Collar:	Length: 31.00 ft	Diameter: 2.70 inches	Volume: 0.22 bbl	Weight to Pull Loose: 4000.00 lb
			<u>Total Volume: 46.73 bbl</u>	Tool Chased 0.00 ft
Drill Pipe Above KB:	31.00 ft			String Weight: Initial 46000.00 lb
Depth to Top Packer:	3346.00 ft			Final 46000.00 lb
Depth to Bottom Packer:	ft			
Interval between Packers:	44.00 ft			
Tool Length:	74.00 ft			
Number of Packers:	2	Diameter: 6.75 inches		

Tool Comments:

## Tool Description

Tool Description	Length (ft)	Serial No.	Position	Depth (ft)	Accum. Lengths
Recorder	0.00	8653	Fluid	3316.00	
Change Over Sub	1.00			3317.00	
Shut In Tool	5.00			3322.00	
Sampler	2.00			3324.00	
Hydraulic tool	5.00			3329.00	
Jars	5.00			3334.00	
Safety Joint	3.00			3337.00	
Packer	5.00			3342.00	30.00 Bottom Of Top Packer
Packer	4.00			3346.00	
Stubb	1.00			3347.00	
Perforations	3.00			3350.00	
Recorder	0.00	8354	Inside	3350.00	
Recorder	0.00	8520	Outside	3350.00	
Change Over Sub	1.00			3351.00	
Drill Pipe	30.00			3381.00	
Change Over Sub	1.00			3382.00	
Perforations	5.00			3387.00	
Bullnose	3.00			3390.00	44.00 Bottom Packers & Anchor

**Total Tool Length: 74.00**



**TRILOBITE  
TESTING, INC**

# DRILL STEM TEST REPORT

**FLUID SUMMARY**

Samuel Gary Jr. & Associates, Inc.

**25-15s-16w Ellis,KS**

1515 Wynkoop Ste. #700  
Denver, CO 80202

**Sandra #1-25**

Job Ticket: 47222

**DST#: 2**

ATTN: Clayton Camozzi

Test Start: 2012.04.24 @ 16:58:15

## Mud and Cushion Information

Mud Type: Gel Chem

Cushion Type:

Oil API:

deg API

Mud Weight: 9.00 lb/gal

Cushion Length: ft

Water Salinity: ppm

Viscosity: 59.00 sec/qt

Cushion Volume: bbl

Water Loss: 9.17 in<sup>3</sup>

Gas Cushion Type:

Resistivity: ohm.m

Gas Cushion Pressure: psig

Salinity: 7800.00 ppm

Filter Cake: inches

## Recovery Information

Recovery Table

Length ft	Description	Volume bbl
3.00	1%Oil/99%Mud	0.021

Total Length: 3.00 ft      Total Volume: 0.021 bbl

Num Fluid Samples: 0

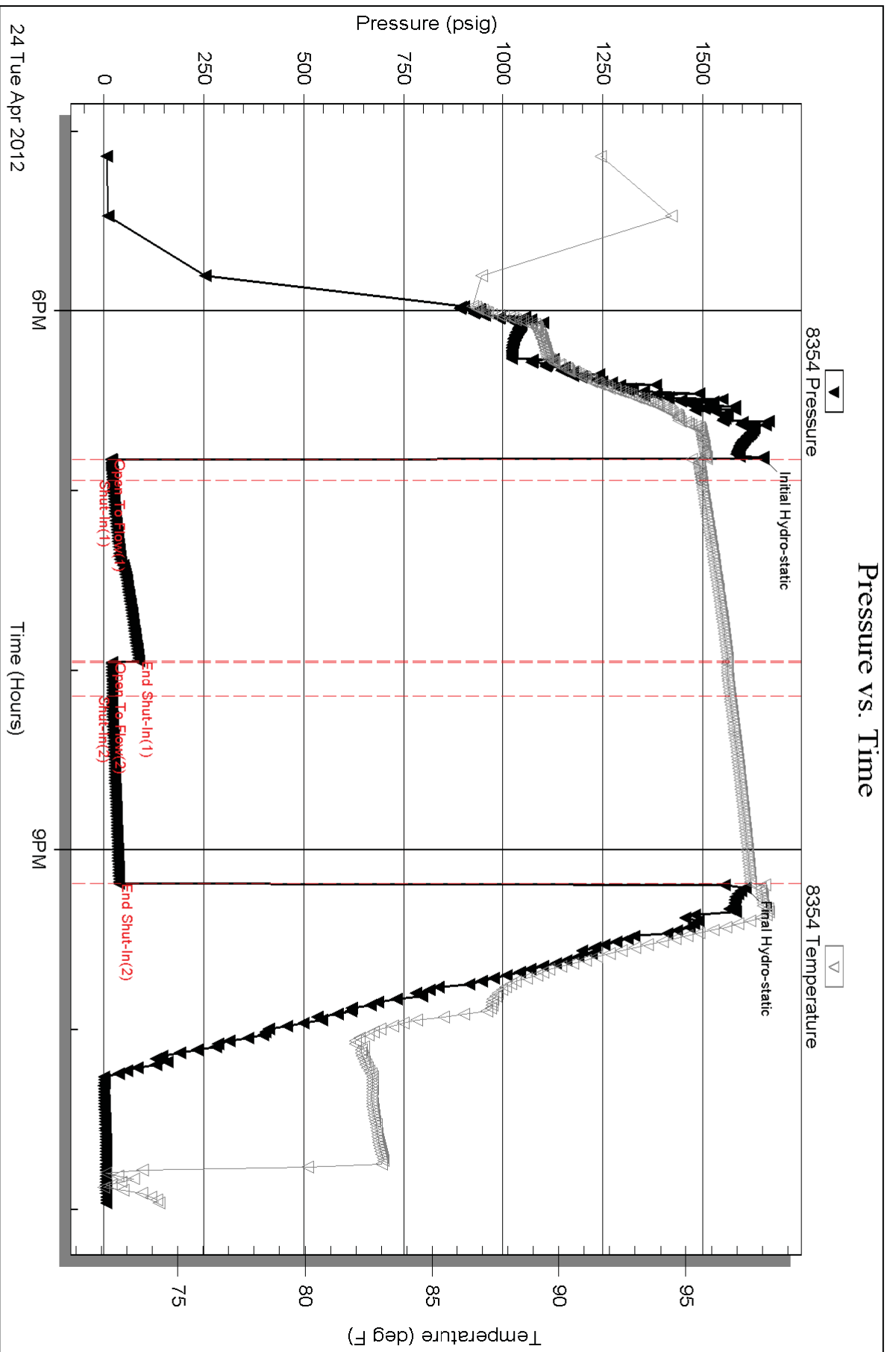
Num Gas Bombs: 0

Serial #:

Laboratory Name:

Laboratory Location:

Recovery Comments: Sampler-4000mL Total. 50mL Oil. 3950 mL Mud  
25# Pressure.

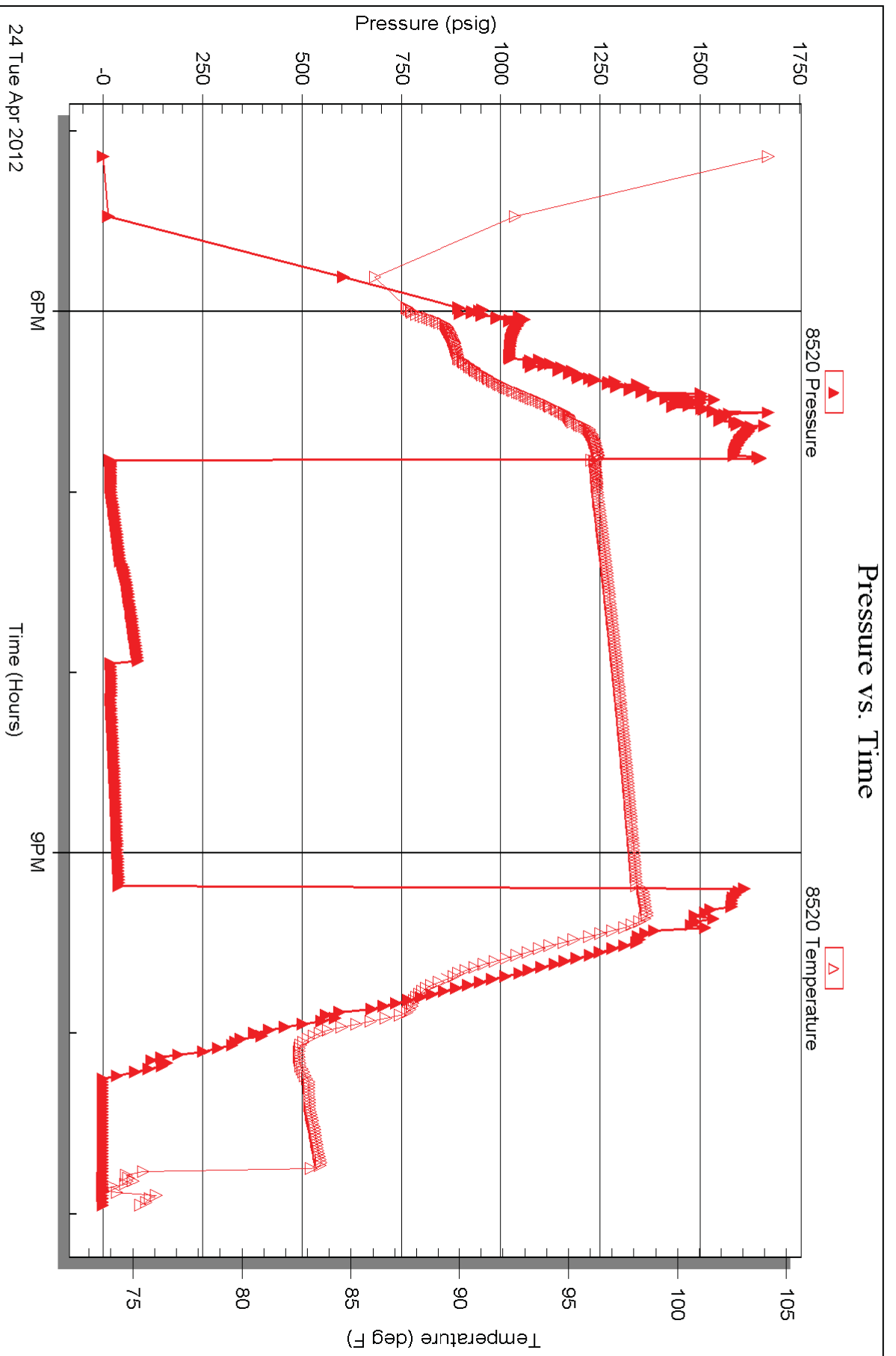


Serial #: 8520

Outside Samuel Gary Jr. & Associates, Inc.

Sandra #1-25

DST Test Number: 2



Trilobite Testing, Inc

Ref. No: 47222

Printed: 2012.04.27 @ 16:17:53



Serial #: 8653

Fluid

Samuel Gary Jr. & Associates, Inc.

Sandra #1-25

DST Test Number: 2

