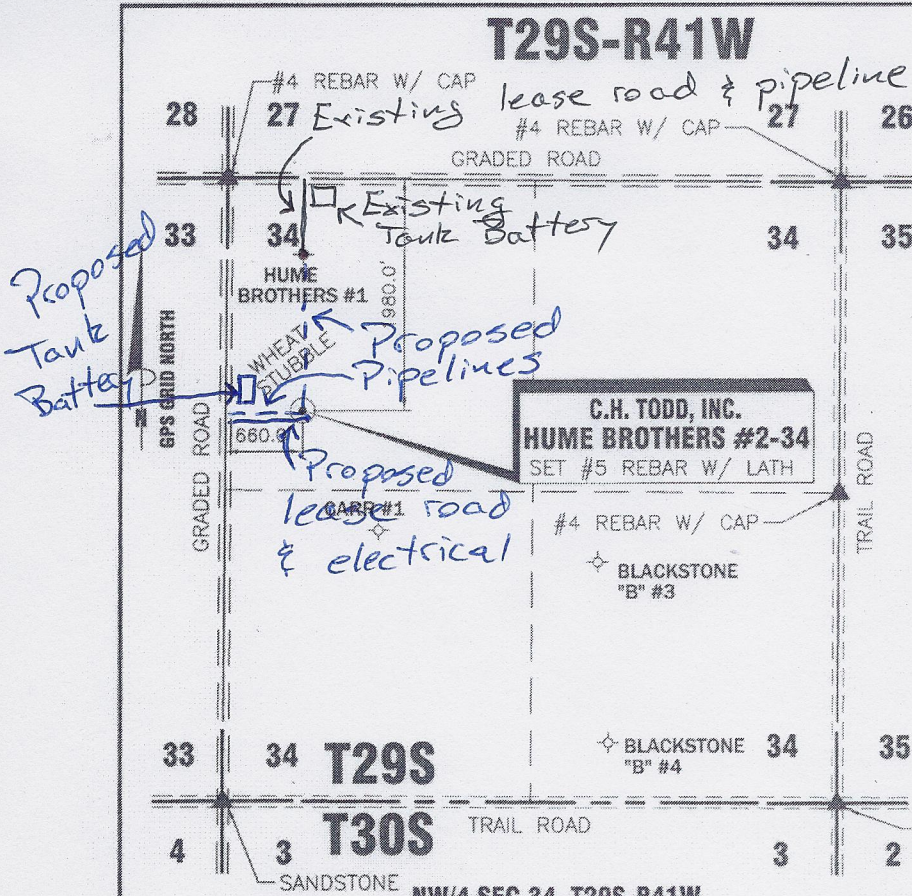


* C.H. Todd owns and operates the Home Brothers #1 well and equipment



DATE 7/31/2012

OPERATOR C.H. TODD, INC.

WELL NAME HUME BROTHERS #2-34

LOCATION NW/4 SEC.34, T29S-R41W

FOOTAGES & RELATIONS 1980.0' F N L
660.0' F W L

ELEVATION 3395.10'

DISTANCE TO EXISTING WELL 1207.21' CARR #1

AUTHORIZED BY B. PFEIFFER

T29S
T30S
 SANDSTONE
 NW/4 SEC.34, T29S-R41W
 STANTON COUNTY, KANSAS

CROP WHEAT STUBBLE

WATER WELL _____

NEAREST TOWER _____

AIRPORT _____

LATITUDE 37°29'06.21089"N

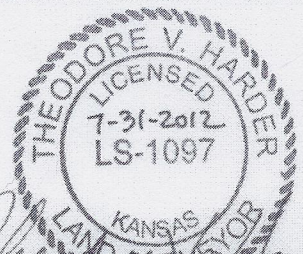
LONGITUDE 101°47'44.53643"W

STATE PLANE COORD.
 KANSAS SOUTH ZONE
 NAD 27

X=1043905.23

Y=314887.85

DRIVING DIRECTIONS USED TO STAKE WELL FROM KNOWN LANDMARK OR CITY FROM:
FROM INTERSECTION OF HWY #27 & HWY #160
SW CORNER JOHNSON CITY, KANSAS; THENCE
SOUTH 5.0 MILES; THENCE WEST 2.0 MILES;
THENCE SOUTH 1980 FT.; THENCE EAST 660 FT.
INTO.



NOTE: CONTRACTOR TO CONTACT ONE CALL @ 1-800-DIG SAFE PRIOR TO ANY EXCAVATION OR CONSTRUCTION.

C.H. TODD, INC. 100 S. MAIN, SUITE 415 Wichita, Kansas 67202 Ph (316) 284-7586		NO. DWN.	REVISIONS	DATE
WELL LOCATION OF THE HUME BROTHERS #2-34 LOCATED IN THE NW/4 SEC.34, T29S-R41W STANTON COUNTY, KANSAS		SCALE: 1"=1500'	DATE: 7/31/2012	
DRAWN BY: DRF	CHECKED BY: TVH	APPROVED BY:	AUTHORIZED BY: B. PFEIFFER	
DRAWING NO. ST0712A04		WORK ORDER NO.:		

HARDER
 AND ASSOCIATES "locating our world"
 LAND SURVEYING - GPS SPECIALISTS
 P.O. BOX 518 514 MORTON
 Elkhart, Kansas 67950
 Phone: (620) 697-2696
 Fax: (620) 697-4175
 E-MAIL: tharder@elkhart.com