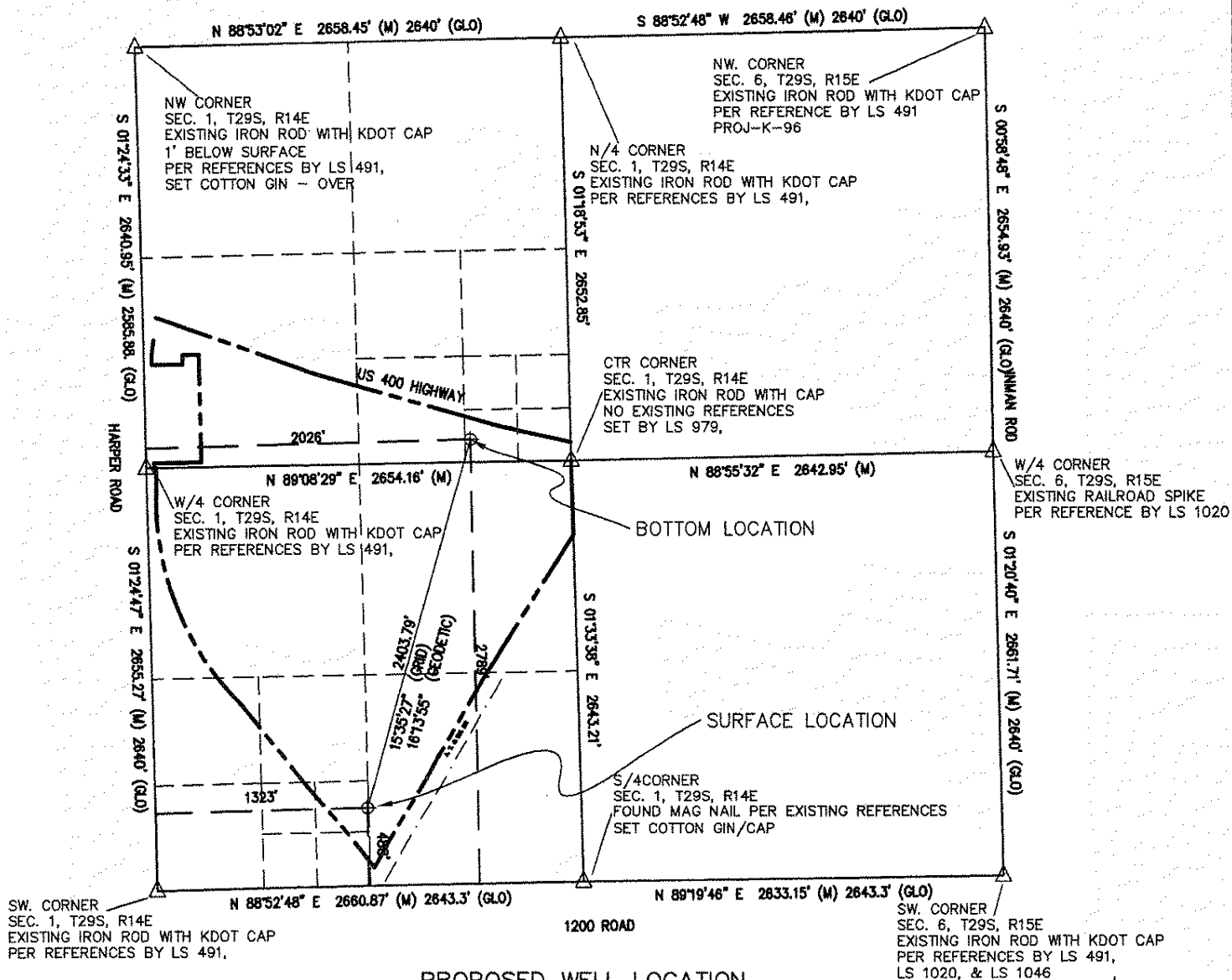


WELL LOCATIONS -- Pierpoint_Bart1
W/2 SECTION 1,
TOWNSHIP 29 SOUTH, RANGE 14 EAST of the 6TH P.M.,
WILSON COUNTY, KANSAS
 prepared for Wilson County Holdings, LLC
 August 3, 2012



PROPOSED WELL LOCATION
WILSON COUNTY HOLDINGS, LLC
Pierpoint_Bart1 Surface

488 ft. from the South Line & 1323 ft. from the West Line
 of the SW 1/4 of Section 1, Township 29 South, Range 14 East
 of the 6th Principal Meridian, Wilson County, Kansas
 Ground Elevation at staked location = 868' MSL
 Latitude N 37° 32' 45.375" = 37.54594°
 Longitude W 95° 49' 46.428" = 95.82956°
 NE/4 SE/4 SW/4 SW/4 Sec. 1-29S-15E

Pierpoint_Bart1 Bottom

2789 ft. from the South Line & 2026 ft. from the West Line
 of the NW 1/4 of Section 1, Township 29 South, Range 14 East
 of the 6th Principal Meridian, Wilson County, Kansas
 Ground Elevation at staked location = 876' MSL
 Latitude N 37° 33' 08.075" = 37.55224°
 Longitude W 95° 49' 37.585" = 95.82711°
 SW/4 SE/4 SE/4 NW/4 Sec. 1-29S-14E



SURVEYOR'S CERTIFICATION:

I, R. Gary Walker, a duly licensed Land Surveyor in the State of Kansas, do hereby certify that the above described well location was staked on the ground, under my supervision as shown herein on July 27, 2012. This plat does not, in any way represent a "Boundary Survey."

R. Gary Walker
 R. Gary Walker, L.S. No. 1066
 8/3/12

CORNERSTONE REGIONAL
SURVEYING, L.L.C.
 1921 North Penn
 Independence, Kansas 67301
 Ph: 620-331-6767

DRAWN BY: <i>RGW</i>	DATE: <i>AUGUST 3, 2012</i>
CHECKED BY: <i>RGW</i>	DRAWING NO.: <i>1204075(Sec1)</i>
JOB NO.: <i>1-1204075-K</i>	SHEET <i>1</i> OF <i>1</i>