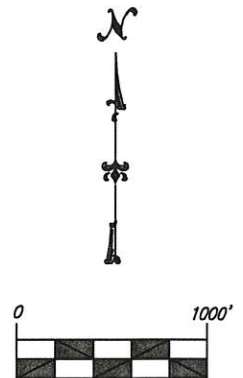
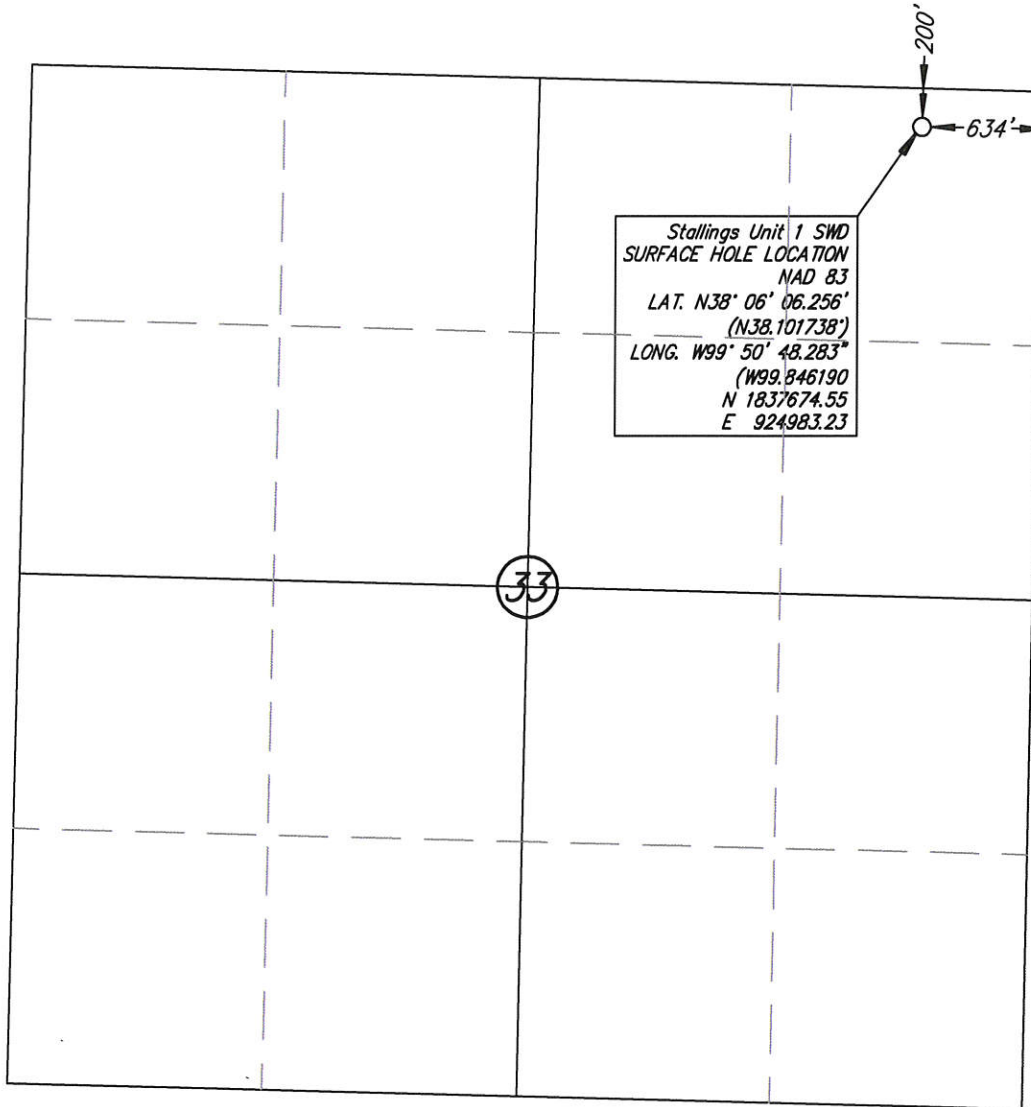


# WELL STAKE-OUT SURVEY (SWD)

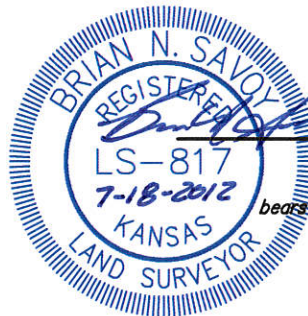


Lease Name: Stallings Unit  
 Well No. 1 SWD  
 Surface Elevation at Stake: 2323.72 NAVD88  
 Well Location Co./State: Hodgeman County, Kansas  
 Well Location Section: 33-T22S-R23W

**Alternate Datums:**

	Horz. Datum NAD 27	
Stallings Unit 1 SWD	Lat. N38°06'06.192"	Long. W99°50'44.825"
	N38.101720'	W99.845785'

**SURVEY DATUMS (shown on drawing)**  
 Horizontal Datum NAD83 (CORS96)  
 Vertical Datum NAVD88 (GEOID09)  
 Kansas SPCS South Zone (US Feet)



Brian N. Savoy, RLS #817  
 This survey is valid only if print  
 bears Surveyor's seal, signed in blue ink.

State of Kansas )  
 ) SS  
 Sedgwick County )

This is to certify that this map or plat and the survey on which it is based was made by me or under my direct supervision and that, to the best of my knowledge and belief, this is a true and correct exhibit of said survey. The wells shown hereon were staked July 18, 2012 at the coordinate location noted.



**Savoy Company, P.A.**  
 Land Surveyors

781.685.4444  
 781.685.4444  
 www.savoy.com



**POE & ASSOCIATES, INC.**  
 CONSULTING ENGINEERS  
 5940 E. Central, Suite 200 Wichita, KS 67208-4242  
 Phone 316/685-4114 FAX 316/685-4444