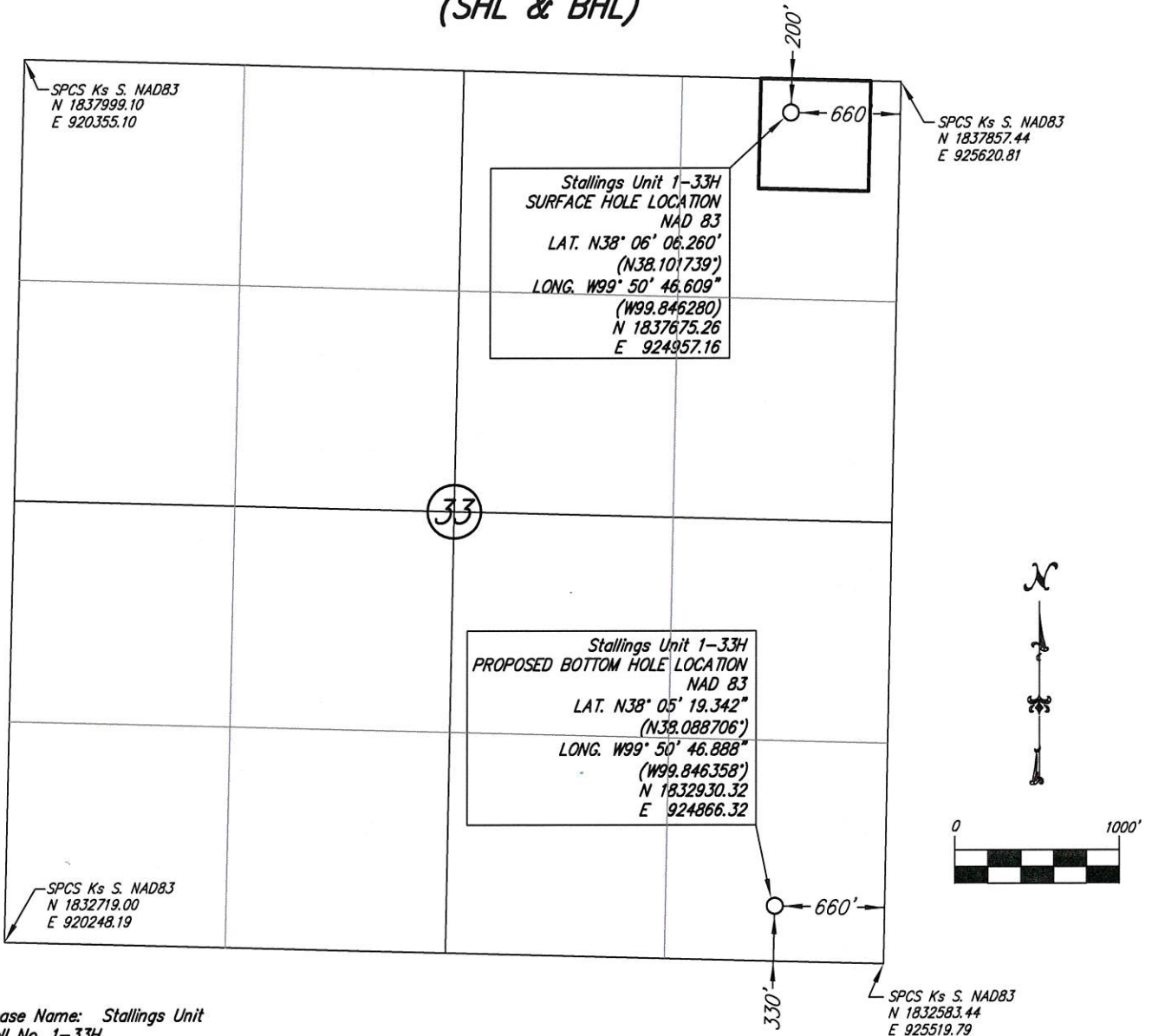


WELL STAKE-OUT SURVEY (SHL & BHL)

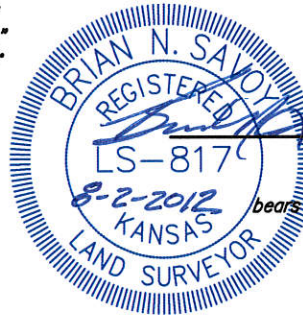


Lease Name: Stallings Unit
Well No. 1-33H
Surface Hole Elevation at Stake: 2325.05 NAVD88
Well Location Co./State: Hodgeman County, Kansas
Well Location Section: 33-T22S-R23W

Alternate Datums:

	Horz. Datum NAD 27
Stallings Unit #1-33H Surface Hole	Lat. N38°06'06.195" Long. W99°50'45.151"
	N38.101721" W99°845875"
Stallings Unit #1-33H Bottom Hole	Lat. N38°05'19.277" Long. W99°50'45.430"
	N38.088688" W99°845953"

SURVEY DATUMS (shown on drawing)
Horizontal Datum NAD83 (GORS96)
Vertical Datum NAVD88 (GEOID09)
Kansas SPCS South Zone (US Feet)



Brian N. Savoy, RLS #817
This survey is valid only if print
bears Surveyor's seal, signed in blue ink.

State of Kansas)
) SS
Sedgwick County)

This is to certify that this map or plat and the survey on which it is based was made by me or under my direct supervision and that, to the best of my knowledge and belief, this is a true and correct exhibit of said survey. The wells shown hereon were staked July 18, 2012 at the coordinate location noted.



Savoy Company, P.A.
Land Surveyors

FH (316) 265-0005
FAX (316) 265-0275

433 S. Hydraulic, Suite 104, Wichita, KS 67202

www.savoyco.com



POE & ASSOCIATES, INC.
CONSULTING ENGINEERS
5940 E. Central, Suite 200 Wichita, KS 67208-4242
Phone 316/685-4114 FAX 316/685-4444