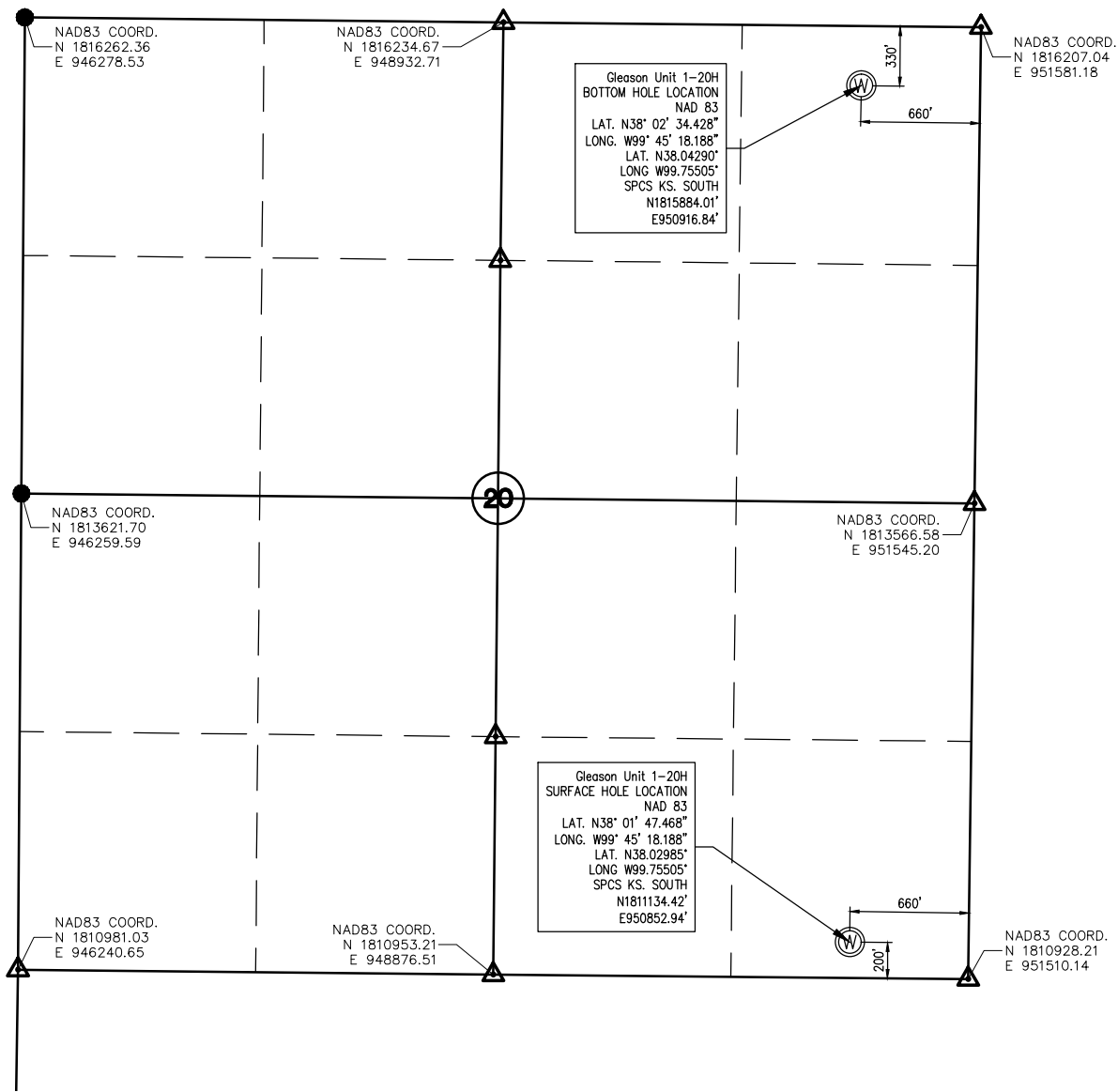


WELL STAKE-OUT SURVEY



Lease Name: Gleason Unit
 Well No. 1-20H
 Surface El. at SHL stake: 2332 NAVD88
 Well location Co./State: Hodgeman Co. Kansas
 Well location Section: 20-T23S-R22W

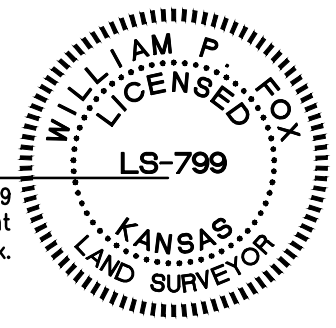
Alternate Datums
 Horz. Datum NAD27
 Gleason Unit #1-20H Lat. N38.029836° Long. W99.754649°

SURVEY DATUMS (shown on drawing)
 Horz. Datum NAD83(CORS96)
 Vert. Datum NAVD88(GEIOD09)
 Ks. SPCS South Zone (US Feet)

State of Kansas)
)SS
 Sedgwick County)

This is to certify that this map or plat and the survey on which it is based was made by me or under my direct supervision and that to the best of knowledge and belief, this is a true and correct exhibit of said Survey. The wells shown hereon were staked August 1, 2012 at the coordinate location noted.

William P. Fox LS 799
 This survey is valid only if print
 bears Surveyor's seal signed in blue ink.



POE & ASSOCIATES, INC.
 CONSULTING ENGINEERS
 5940 E. Central, Suite 200 ■ Wichita, KS 67208-4242
 Phone 316/685-4114 ■ FAX 316/685-4444