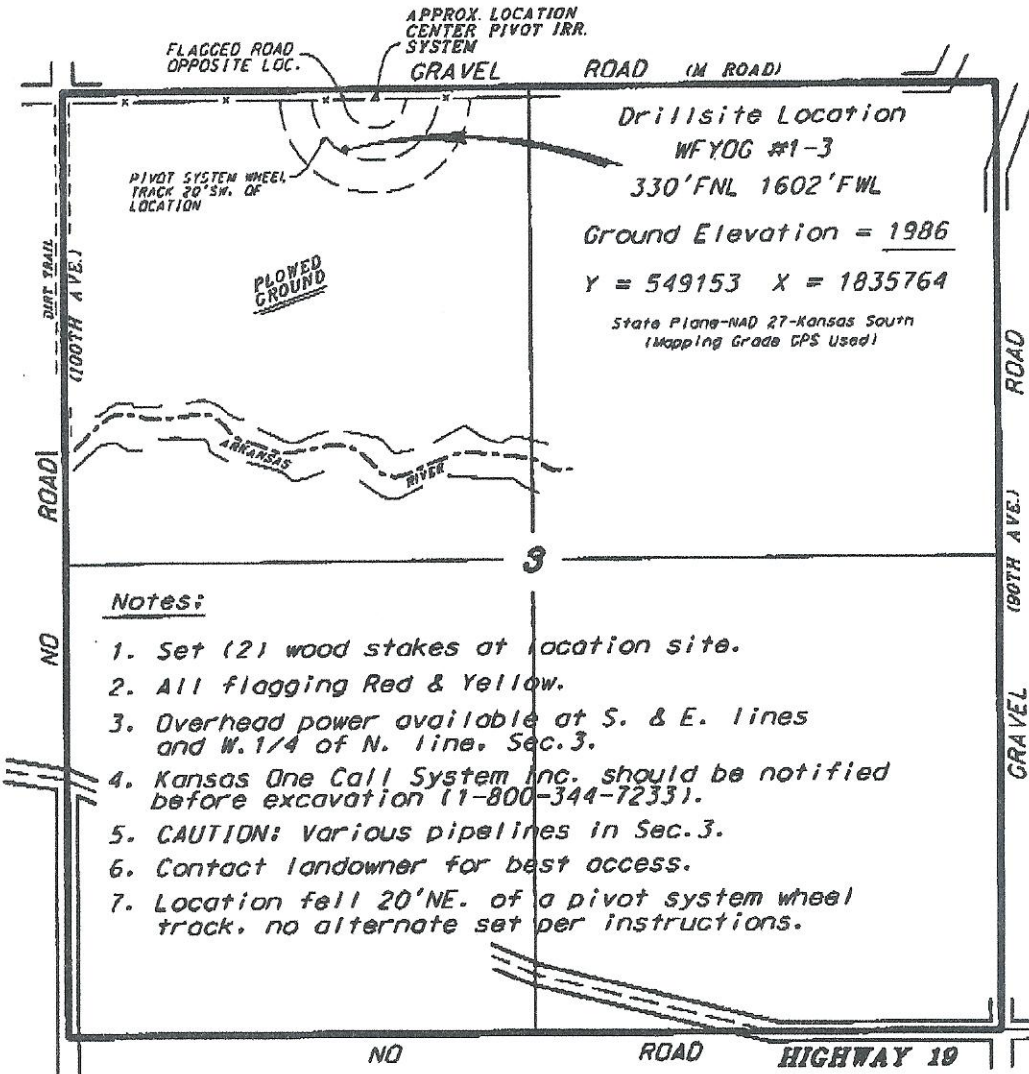


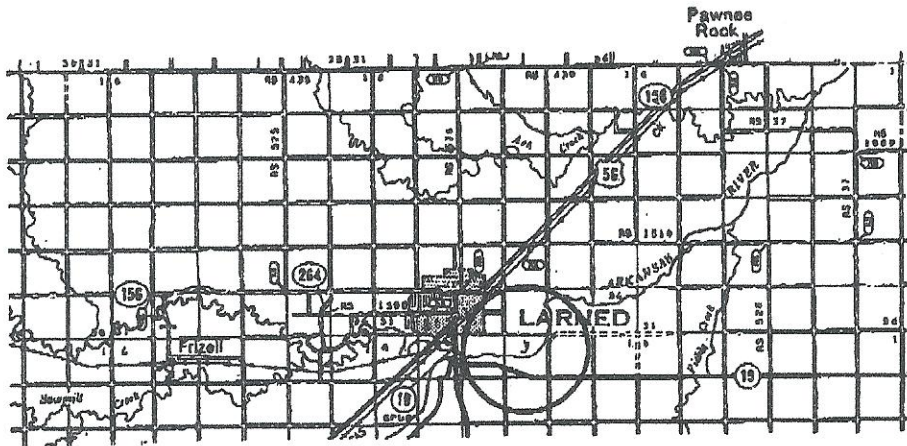
SHELBY RESOURCES, LLC/CAPTIVA II, LLC
WFYOG LEASE
NW. 1/4. SECTION 3. T22S. R16W
PAWNEE COUNTY, KANSAS



Notes:

1. Set (2) wood stakes at location site.
2. All flagging Red & Yellow.
3. Overhead power available at S. & E. lines and W. 1/4 of N. line, Sec. 3.
4. Kansas One Call System Inc. should be notified before excavation (1-800-344-7233).
5. CAUTION: Various pipelines in Sec. 3.
6. Contact landowner for best access.
7. Location fell 20'NE. of a pivot system wheel track, no alternate set per instructions.

Ingress and egress to location as shown on this plan is for usage only and may not be legally opened for public use. Contact landowner, tenant and county road department for access.



* Controlling data is based upon the best maps and photographs available to us and upon a regular section of land containing 340 acres.
 * Approximate section lines were determined using the normal standards of care of oilfield surveyors practicing in the state of Kansas. The section corners, which establish the precise section lines, were not necessarily located, and the exact location of the drillsite location in the section is not guaranteed. Therefore, the operator assuming this service and accepting this plan and all other services relating thereto agrees to hold Central Kansas Oilfield Services, Inc., its officers and employees harmless from all losses, costs and damages and hold them released from any liability from negligence or consequential damages.
 * Elevations derived from National Geographic Vertical Datum.

Date August 8, 2012

CENTRAL KANSAS OILFIELD SERVICES, INC. (620)792-1977