



**TRILOBITE
TESTING, INC**

DRILL STEM TEST REPORT

Shakespeare Oil Co., Inc.

28-17s-31w

202 W Main St.
Salem IL 62881

Habiger #1

ATTN: Pat Deenihan

Job Ticket: 48387

DST#: 2

Test Start: 2012.06.23 @ 15:06:15

GENERAL INFORMATION:

Formation: **Lansing "D"**

Deviated: No Whipstock: ft (KB)

Time Tool Opened: 16:53:45

Time Test Ended: 21:10:30

Test Type: Conventional Bottom Hole (Reset)

Tester: Mike Roberts

Unit No: 48

Interval: 4018.00 ft (KB) To 4037.00 ft (KB) (TVD)

Reference Elevations: 2947.00 ft (KB)

Total Depth: 4037.00 ft (KB) (TVD)

2942.00 ft (CF)

Hole Diameter: 7.88 inches Hole Condition: Poor

KB to GR/CF: 5.00 ft

Serial #: 8736

Inside

Press @ Run Depth: 677.09 psig @ 4019.00 ft (KB)

Capacity: 8000.00 psig

Start Date: 2012.06.23

End Date:

2012.06.23

Last Calib.:

2012.06.23

Start Time: 15:06:15

End Time:

21:10:30

Time On Btm:

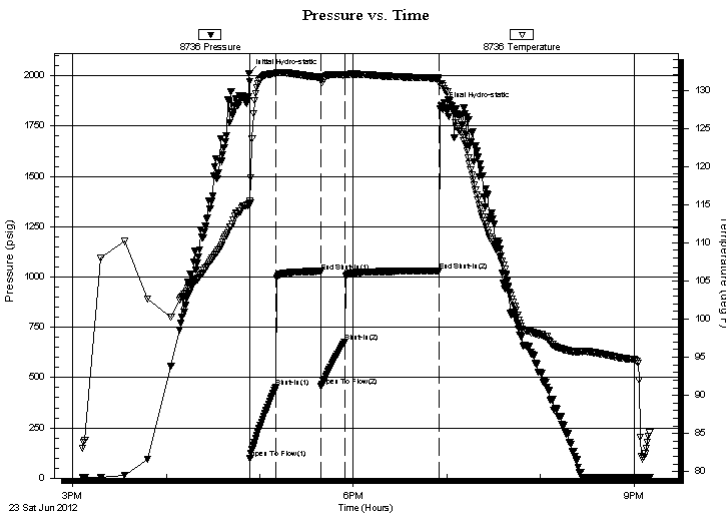
2012.06.23 @ 16:53:00

Time Off Btm:

2012.06.23 @ 18:56:30

TEST COMMENT: IF:BOB in 2 min.
IS:No return blow
FF:BOB in 2 min.
FS:No return blow

PRESSURE SUMMARY



Time (Min.)	Pressure (psig)	Temp (deg F)	Annotation
0	2012.58	115.11	Initial Hydro-static
1	98.82	115.15	Open To Flow (1)
18	449.75	132.13	Shut-In(1)
46	1027.78	131.66	End Shut-In(1)
47	455.28	131.37	Open To Flow (2)
62	677.09	131.96	Shut-In(2)
122	1029.65	131.55	End Shut-In(2)
124	1849.26	130.89	Final Hydro-static

Recovery

Length (ft)	Description	Volume (bbl)
124.00	sw	0.61
1302.00	sw with a trace of oil	18.26

Gas Rates

Choke (inches)	Pressure (psig)	Gas Rate (Mcf/d)

* Recovery from multiple tests



TRILOBITE TESTING, INC

DRILL STEM TEST REPORT

Shakespeare Oil Co., Inc.

28-17s-31w

202 W Main St.
Salem IL 62881

Habiger #1

Job Ticket: 48387

DST#: 2

ATTN: Pat Deenihan

Test Start: 2012.06.23 @ 15:06:15

GENERAL INFORMATION:

Formation: **Lansing "D"**

Deviated: No Whipstock: ft (KB)

Time Tool Opened: 16:53:45

Time Test Ended: 21:10:30

Interval: 4018.00 ft (KB) To 4037.00 ft (KB) (TVD)

Total Depth: 4037.00 ft (KB) (TVD)

Hole Diameter: 7.88 inches Hole Condition: Poor

Test Type: Conventional Bottom Hole (Reset)

Tester: Mike Roberts

Unit No: 48

Reference Elevations: 2947.00 ft (KB)

2942.00 ft (CF)

KB to GR/CF: 5.00 ft

Serial #: 6668 Outside

Press @ Run Depth: psig @ 4019.00 ft (KB)

Start Date: 2012.06.23

End Date: 2012.06.23

Start Time: 15:06:15

End Time: 21:10:45

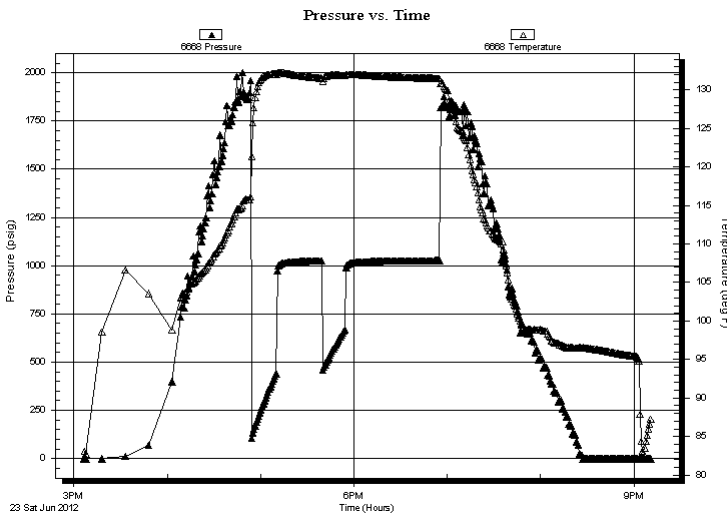
Capacity: 8000.00 psig

Last Calib.: 2012.06.23

Time On Btm:

Time Off Btm:

TEST COMMENT: IF:BOB in 2 min.
IS:No return blow
FF:BOB in 2 min.
FS:No return blow



PRESSURE SUMMARY

Time (Min.)	Pressure (psig)	Temp (deg F)	Annotation

Recovery

Length (ft)	Description	Volume (bbl)
124.00	sw	0.61
1302.00	sw with a trace of oil	18.26

Gas Rates

	Choke (inches)	Pressure (psig)	Gas Rate (Mcf/d)

* Recovery from multiple tests



**TRILOBITE
TESTING, INC**

DRILL STEM TEST REPORT

FLUID SUMMARY

Shakespeare Oil Co., Inc.

28-17s-31w

202 W Main St.
Salem IL 62881

Habiger #1

Job Ticket: 48387

DST#: 2

ATTN: Pat Deenihan

Test Start: 2012.06.23 @ 15:06:15

Mud and Cushion Information

Mud Type: Gel Chem

Cushion Type:

Oil API:

0 deg API

Mud Weight: 9.00 lb/gal

Cushion Length:

ft

Water Salinity:

24000 ppm

Viscosity: 65.00 sec/qt

Cushion Volume:

bbbl

Water Loss: 6.39 in³

Gas Cushion Type:

Resistivity: 0.00 ohm.m

Gas Cushion Pressure:

psig

Salinity: 1500.00 ppm

Filter Cake: 1.00 inches

Recovery Information

Recovery Table

Length ft	Description	Volume bbl
124.00	sw	0.610
1302.00	sw with a trace of oil	18.264

Total Length: 1426.00 ft Total Volume: 18.874 bbl

Num Fluid Samples: 0

Num Gas Bombs: 0

Serial #:

Laboratory Name:

Laboratory Location:

Recovery Comments: RW= .186@ 102.4*= 24,000 ppm

Serial #: 8736

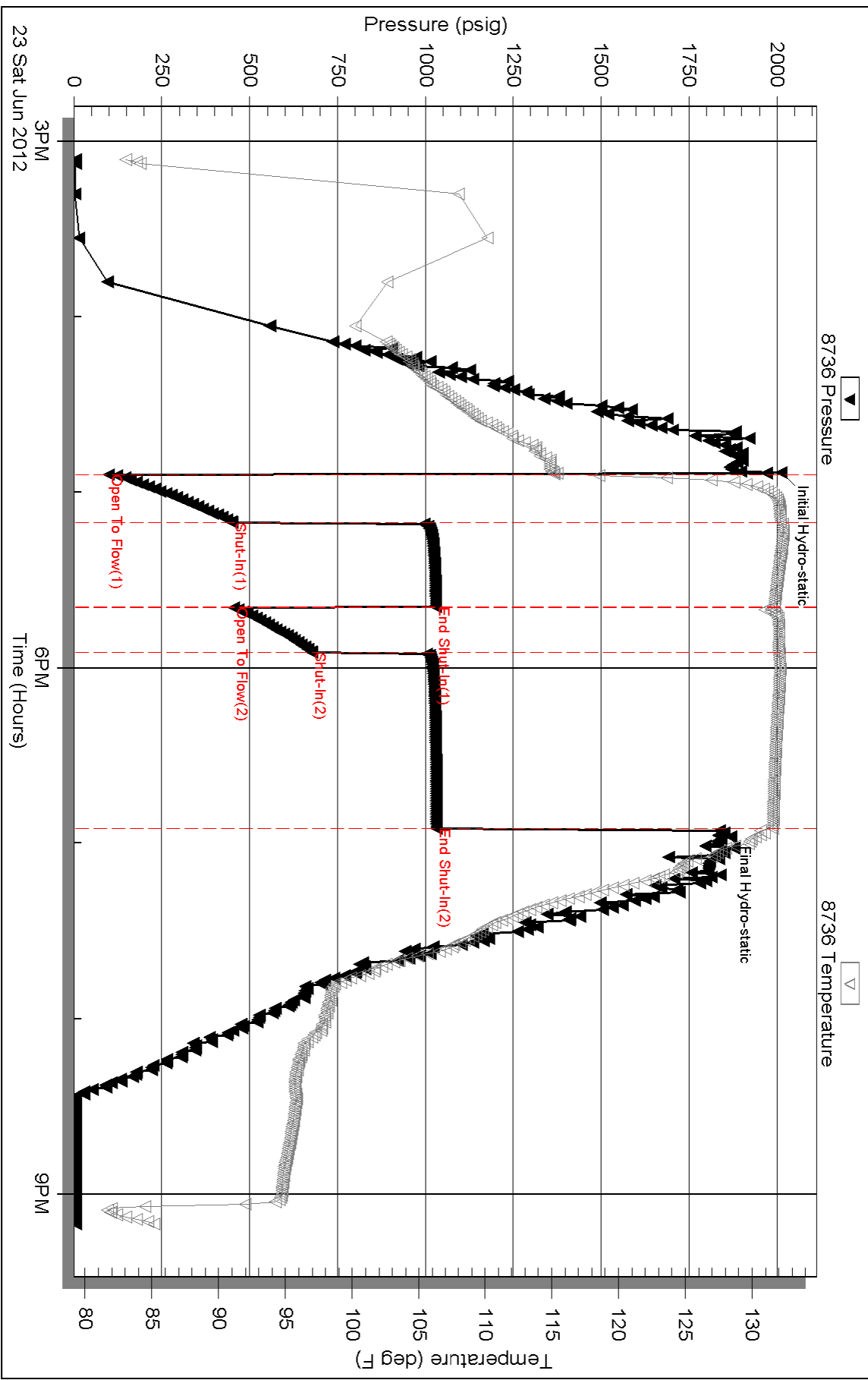
Inside

Shakespeare Oil Co., Inc.

Habiger #1

DST Test Number: 2

Pressure vs. Time

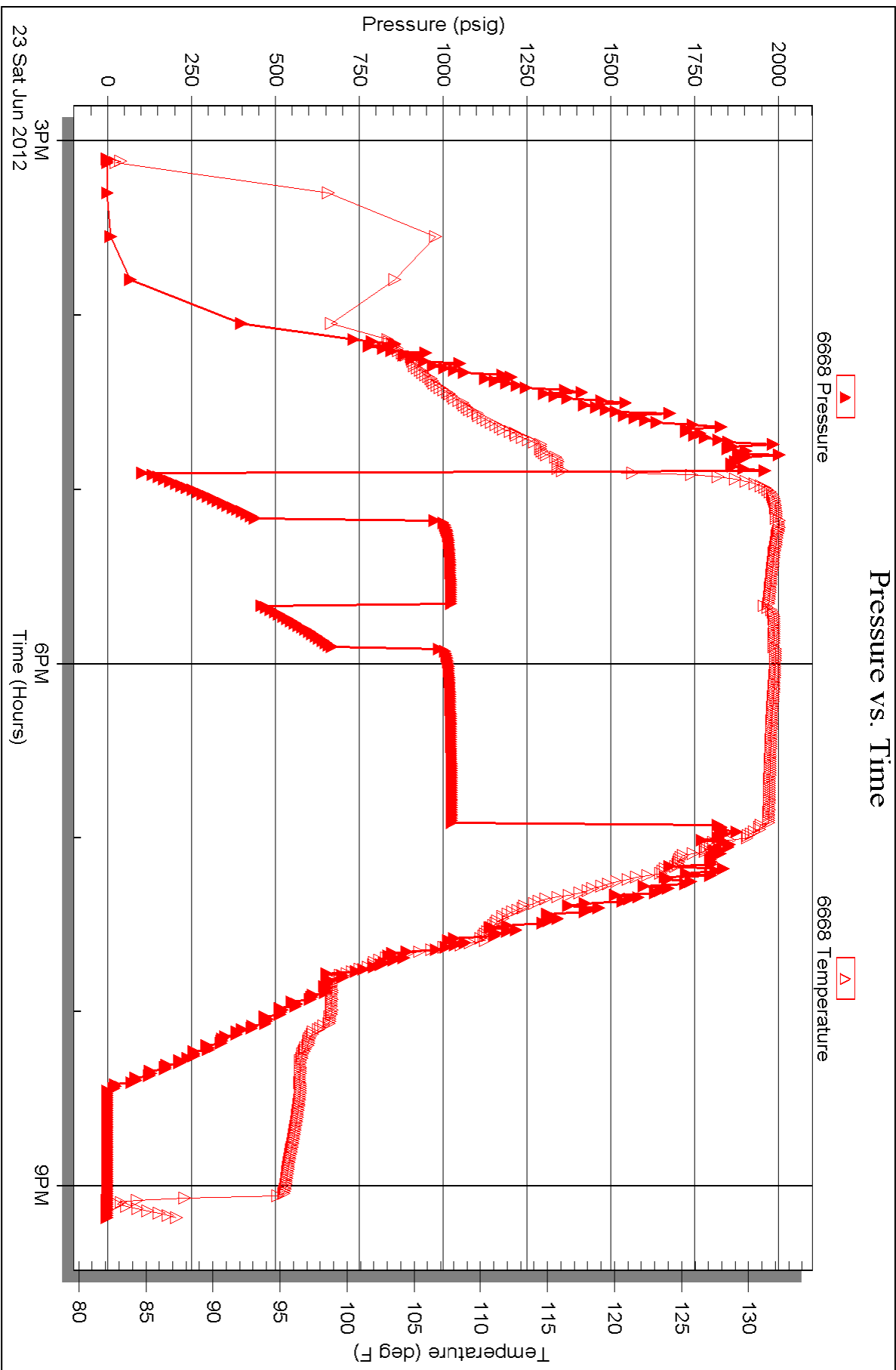


Serial #: 6668

Outside Shakespeare Oil Co., Inc.

Habiger #1

DST Test Number: 2



Triobite Testing, Inc

Ref. No: 48387

Printed: 2012.06.24 @ 04:59:40