



**TRILOBITE TESTING, INC.**

# DRILL STEM TEST REPORT

Shakespeare Oil Co., Inc.

**28-17s-31w**

202 W Main St.  
Salem IL 62881

**Habiger #1**

ATTN: Pat Deenihan

Job Ticket: 48389

**DST#: 4**

Test Start: 2012.06.24 @ 01:45:15

## GENERAL INFORMATION:

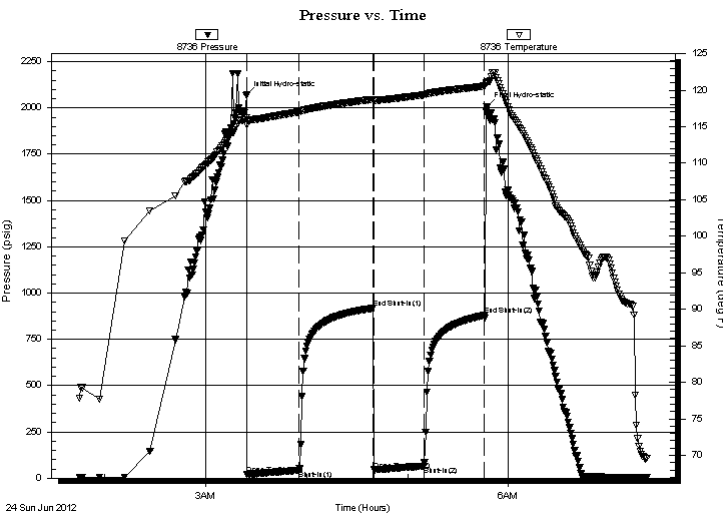
Formation: "J"  
 Deviated: No Whipstock: ft (KB)  
 Time Tool Opened: 03:24:45  
 Time Test Ended: 07:22:30  
 Interval: **4170.00 ft (KB) To 4210.00 ft (KB) (TVD)**  
 Total Depth: 4210.00 ft (KB) (TVD)  
 Hole Diameter: 7.88 inches Hole Condition: Poor  
 Test Type: Conventional Bottom Hole (Reset)  
 Tester: Mike Roberts  
 Unit No: 48  
 Reference Elevations: 2947.00 ft (KB)  
 2942.00 ft (CF)  
 KB to GR/CF: 5.00 ft

## Serial #: 8736

Inside

Press @ Run Depth: 65.15 psig @ 4172.00 ft (KB)  
 Start Date: 2012.06.24 End Date: 2012.06.24  
 Start Time: 01:45:15 End Time: 07:22:30  
 Capacity: 8000.00 psig  
 Last Calib.: 2012.06.25  
 Time On Btm: 2012.06.24 @ 03:24:30  
 Time Off Btm: 2012.06.24 @ 05:47:00

TEST COMMENT: IF: Built to 1" blow  
 IS: No return blow  
 FF: No blow  
 FS: No return blow



## PRESSURE SUMMARY

Time (Min.)	Pressure (psig)	Temp (deg F)	Annotation
0	2069.33	116.25	Initial Hydro-static
1	20.70	115.31	Open To Flow (1)
31	42.63	117.02	Shut-In(1)
75	917.57	118.75	End Shut-In(1)
76	45.12	118.50	Open To Flow (2)
106	65.15	119.34	Shut-In(2)
142	879.46	120.53	End Shut-In(2)
143	2005.33	121.00	Final Hydro-static

## Recovery

Length (ft)	Description	Volume (bbl)
80.00	ocmw 2%o 40%m 58%w	0.39

## Gas Rates

Choke (inches)	Pressure (psig)	Gas Rate (Mcf/d)

\* Recovery from multiple tests



**TRILOBITE  
TESTING, INC.**

# DRILL STEM TEST REPORT

**FLUID SUMMARY**

Shakespeare Oil Co., Inc.

**28-17s-31w**

202 W Main St.  
Salem IL 62881

**Habiger #1**

Job Ticket: 48389

**DST#: 4**

ATTN: Pat Deenihan

Test Start: 2012.06.24 @ 01:45:15

## Mud and Cushion Information

Mud Type: Gel Chem

Cushion Type:

Oil API:

0 deg API

Mud Weight: 10.00 lb/gal

Cushion Length:

ft

Water Salinity:

25000 ppm

Viscosity: 65.00 sec/qt

Cushion Volume:

bbbl

Water Loss: 7.19 in<sup>3</sup>

Gas Cushion Type:

Resistivity: 0.00 ohm.m

Gas Cushion Pressure:

psig

Salinity: 2600.00 ppm

Filter Cake: 1.00 inches

## Recovery Information

Recovery Table

Length ft	Description	Volume bbl
80.00	ocmw 2%o 40%m 58%w	0.393

Total Length: 80.00 ft      Total Volume: 0.393 bbl

Num Fluid Samples: 0

Num Gas Bombs: 0

Serial #:

Laboratory Name:

Laboratory Location:

Recovery Comments: RW= .286@92.3=25,000 ppm

Serial #: 8736

Inside

Shakespeare Oil Co., Inc.

Habiger #1

DST Test Number: 4

