

ADVANTAGE ELEVATIONS

OIL FIELD SURVEYORS

BOX 8604 - PRATT, KS 67124
(620) 672-6491

626121

INVOICE NO.

OIL PRODUCERS INC OF KANSAS

OPERATOR

1B-14

NO.

Hawes Ranch

FARM

Ford

COUNTY

14

S

28s

T

23w

R

2368' FSL & 866' FWL

LOCATION

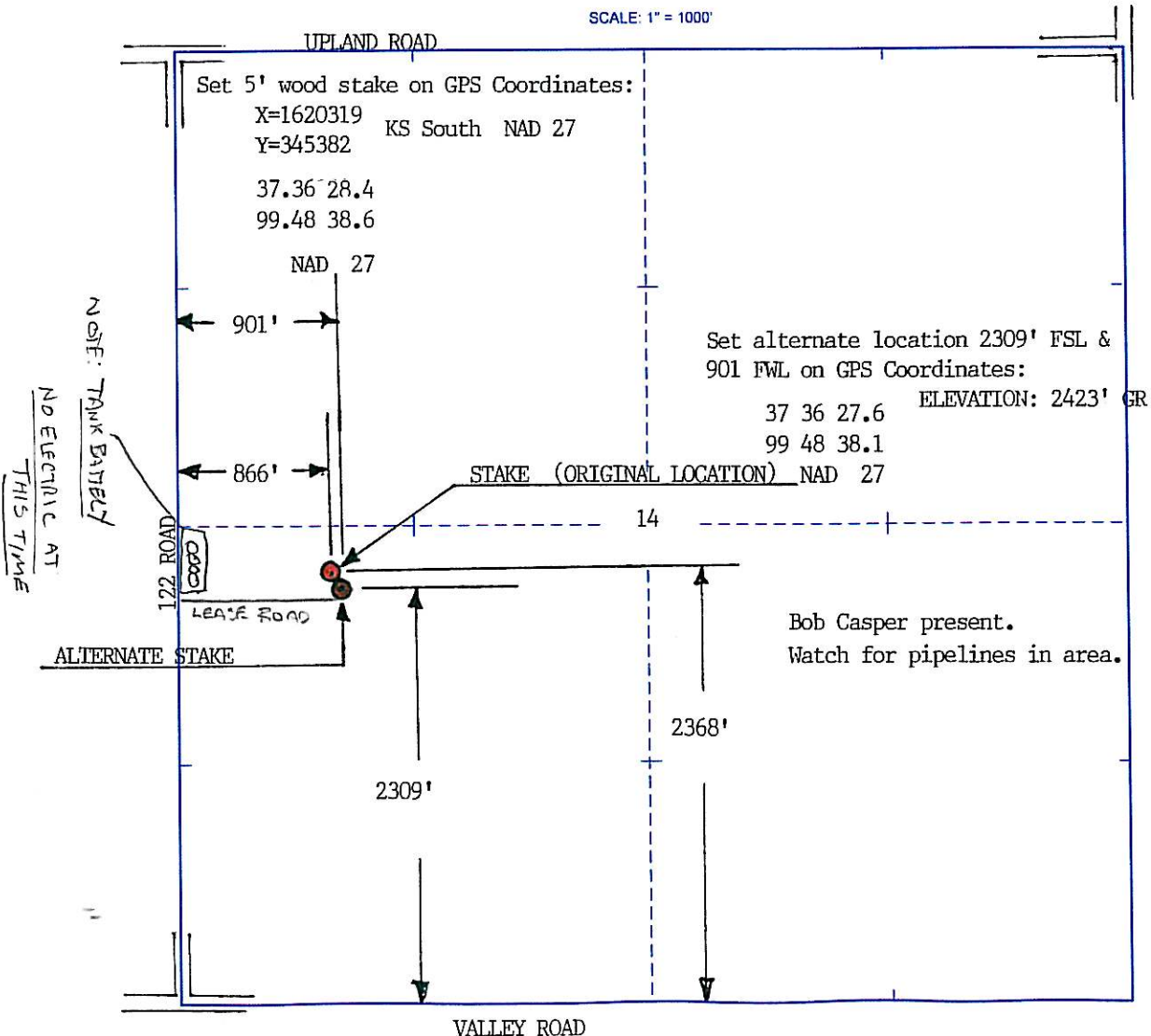
ELEVATION: 2423' GR



OIL PRODUCERS INC OF KANSAS
1710 Waterfront Pkwy.
Wichita, KS 67206-6603

AUTHORIZED BY: Frian McCoy/ Bob Casper

SCALE: 1" = 1000'



DATE STAKED: 06/26/12