

(316) 265-3000
FAX: (316) 265-3455

1700 N. WATERFRONT PARKWAY
BLDG. 600
WICHITA, KANSAS 67208-5514

Scale 1:240 (5"=100') Imperial
Measured Depth Log

Well Name: #1-26 Phillip
Location: 2180' FNL, 1707' FWL, 26-13S-31W, Gove County, Kansas
License Number: API: 15-063-22000 Region: Wildcat
Spud Date: 5/23/12 Drilling Completed: 6/4/12
Surface Coordinates: Lat:38.8967534
Long:-100.7359446
Bottom Hole Coordinates: Vertical hole

Ground Elevation (ft): 2851' K.B. Elevation (ft): 2856'
Logged Interval (ft): 3600' To: RTD Total Depth (ft): 4631'
Formation: Mississippian at RTD
Type of Drilling Fluid: Chemical

Printed by MUD.LOG from WellSight Systems 1-800-447-1534 www.WellSight.com

GEOLOGIST

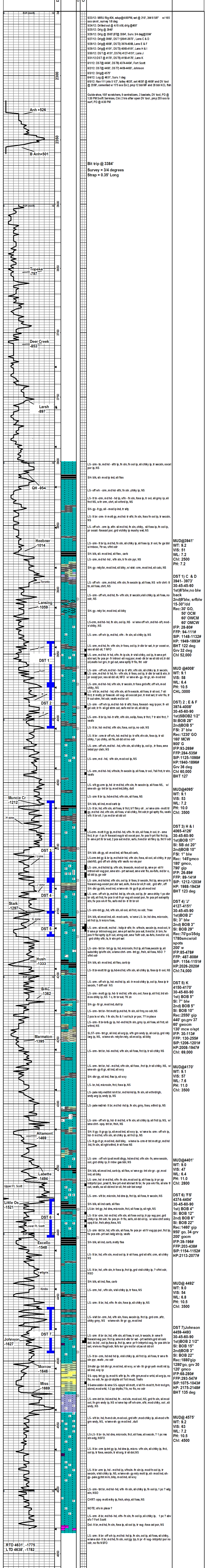
Name: Bob Schreiber
Company: Independent
Address: 268 NE 220 Rd
Holsington, KS 67544
620-786-9984

COMMENTS

Contractor: Murfin Drilling Company Rig #24
Pusher: Tony Martin
Surface Casing: 8 5/8" set at 210' w/165sx
Production Casing: 5 1/2" set at 4630',
Mud by: MudCo
DST's by: Trilobite Testing
Logs by: Weatherford (DIL, CN-CD, ML)
RTD=4631'
LTD=4638'

FORMATION TOPS

FORMATION	SAMPLE TOPS		LOG TOPS	
	Depth	Datum	Depth	Datum
Stone Corral	2330'	+526	2332'	+524
B/Stone Corral	2355'	+501	2356'	+500
Heebner Shale	3870'	-1014	3877'	-1021
Lansing	3915'	-1059	3919'	-1063
Muncie Creek Shale	4068'	-1212	4074'	-1218
Stark Shale	4153'	-1297	4159'	-1303
Hushpuckney Shale	4189'	-1333	4195'	-1339
Marmaton	4251'	-1395	4263'	-1407
Upper Fort Scott	4354'	-1498	4364'	-1508
Little Osage Shale	4377'	-1521	4384'	-1528
Excello Shale	4404'	-1548	4411'	-1555
Johnson Zone	4483'	-1627	4480'	-1624
Morrow	4502'	-1646	4506'	-1650
Mississippian	4525'	-1669	4532'	-1676
RTD	4631'	-1775		
LTD			4638'	-1782



RTD 4631', -1775
LTD 4638', -1782

MUD@3941'
WT: 9.2
VIS: 51
WL: 7.2
PH: 2500
Chl: 7.00

DST 1) C & D
3941-3973'
30-45-60-90
1st) 6" blw, no blw
back
2nd) 9" blw, srflbw
15-30" /dd
Rec: 30' GO,
50' OCM
60' OMCW
IFF: 28-80#
FFP: 94-111#
SIP: 1212-1203#
HP: 1949-1893#
BHT 122 deg
Grv 32 deg
Chl 52,000

MUD@4008'
WT: 9.1
VIS: 58
WL: 6.4
PH: 10.0
Chl: 3000

DST 2) E & F
3974-4008'
30-45-60-90
1st) SBOB 2 1/2"
SI: SBOB 28"
2nd) BOB 5"
FSI: 3" blw
Rec: 1230' GO
160' MCW
IFF: 93-269#
FFP: 284-535#
SIP: 1125-1098#
HP: 1940-1896#
Grv 36 deg
Chl 60,000
BHT 127

MUD@4095'
WT: 9.1
VIS: 53
WL: 7.2
PH: 10.0
Chl: 3500

DST 3) H & I
4127-4170'
3941-4126'
30-45-60-90
1st) BOB 17"
SI: SB dd 20"
2nd) BOB 10"
FSI: 1" blw
Rec: 145' gmco
180' gmco
790' gip
IFF: 26-89#
FFP: 89-141#
SIP: 1212-1203#
HP: 1988-1943#
BHT 123 deg

DST 4) J
4127-4151'
3941-4126'
30-45-60-90
1st) BOB 2"
SI: 3" blw
2nd) BOB 3"
SI: BOB 29"
Rec: 20' go/35dg
1780smcw/oil
spots
200' w
IFF: 85-478#
FFP: 487-808#
SIP: 1154-1151#
HP: 2028-2020#
Chl: 74,000

DST 5) K
4150-4170'
3941-4126'
30-45-60-90
1st) BOB 5"
SI: 7" blw
2nd) BOB 5"
SI: BOB 10"
Rec: 2550' gip
440' go, grv 37
60' gwocm
IFF: 30-113#
FFP: 130-255#
SIP: 1206-1201#
HP: 2008-1947#
Chl: 69,000

MUD@4170'
WT: 9.0
VIS: 57
WL: 7.6
PH: 11.0
Chl: 3500

DST 6) 'FS'
4374-4404'
30-45-60-90
1st) BOB 4"
SI: BOB 12"
2nd) BOB 6"
SI: BOB 22"
Rec: 1460' gip
950' go, 34 grv
200' gwocm
IFF: 39-196#
FFP: 203-547#
SIP: 1154-1152#
HP: 2113-2077#

MUD@4492'
WT: 9.0
VIS: 54
WL: 6.8
PH: 10.5
Chl: 3500

DST 7) Johnson
4459-4493'
30-45-60-90
1st) BOB 2 1/2"
SI: BOB 15"
2nd) BOB 3"
SI: BOB 28"
Rec: 1880' gip
1280' go, grv 30
120' gwocm
IFF: 68-280#
FFP: 203-547#
SIP: 1075-1043#
HP: 2175-2148#
BHT 135 deg

MUD@4575'
WT: 9.2
VIS: 63
WL: 7.2
PH: 10.5
Chl: 4500