



**TRILOBITE
TESTING, INC.**

DRILL STEM TEST REPORT

Shakespeare Oil Co. Inc.

36-16s-34w Scott Co. KS

202 W Main St.
Salem IL 62881

Janzen #1-36

Job Ticket: 45908

DST#: 5

ATTN: Tim Priest

Test Start: 2012.06.21 @ 17:42:00

GENERAL INFORMATION:

Formation: **Marmaton**

Deviated: No Whipstock: ft (KB)

Time Tool Opened: 19:21:55

Time Test Ended: 00:48:39

Test Type: Conventional Bottom Hole (Reset)

Tester: Will MacLean

Unit No: 40

Interval: 4446.00 ft (KB) To 4480.00 ft (KB) (TVD)

Reference Elevations: 3109.00 ft (KB)

Total Depth: 4480.00 ft (KB) (TVD)

3101.00 ft (CF)

Hole Diameter: 7.88 inches Hole Condition: Good

KB to GR/CF: 8.00 ft

Serial #: 8360 Inside

Press @ Run Depth: 36.55 psig @ 4448.00 ft (KB)

Capacity: 8000.00 psig

Start Date: 2012.06.21

End Date:

2012.06.22

Last Calib.:

2012.06.22

Start Time: 17:42:00

End Time:

00:48:39

Time On Btm:

2012.06.21 @ 19:21:40

Time Off Btm:

2012.06.21 @ 22:13:09

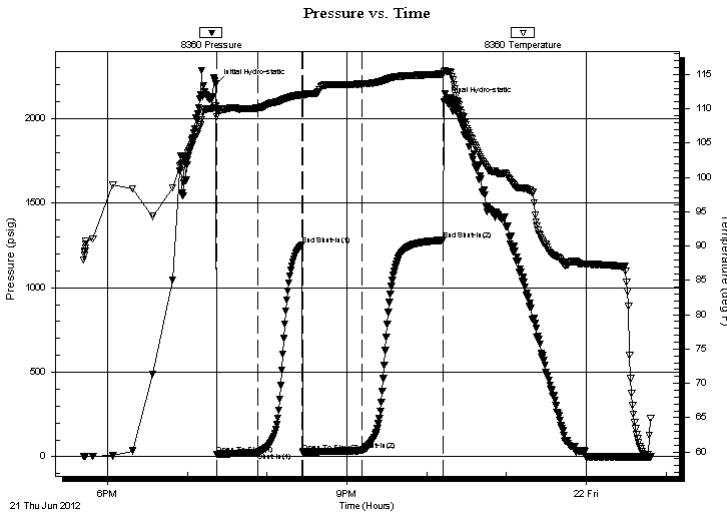
TEST COMMENT: IF- Weak Surface Blow Built to 1 1/4"

IS- No Blow

FF- Weak Surface Blow Built to 2"

FS- No Blow

PRESSURE SUMMARY



Time (Min.)	Pressure (psig)	Temp (deg F)	Annotation
0	2205.45	110.39	Initial Hydro-static
1	13.23	108.86	Open To Flow (1)
32	23.70	110.10	Shut-In(1)
65	1254.78	112.07	End Shut-In(1)
66	24.82	112.03	Open To Flow (2)
110	36.55	113.60	Shut-In(2)
171	1281.61	115.06	End Shut-In(2)
172	2099.64	115.43	Final Hydro-static

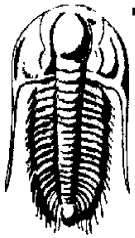
Recovery

Length (ft)	Description	Volume (bbl)
20.00	GOCM 12%g 18%oil 70%m	0.10
40.00	GO 9%g 91%oil	0.20

* Recovery from multiple tests

Gas Rates

	Choke (inches)	Pressure (psig)	Gas Rate (Mcf/d)



**TRILOBITE
TESTING, INC.**

DRILL STEM TEST REPORT

Shakespeare Oil Co. Inc.

36-16s-34w Scott Co. KS

202 W Main St.
Salem IL 62881

Janzen #1-36

Job Ticket: 45908

DST#: 5

ATTN: Tim Priest

Test Start: 2012.06.21 @ 17:42:00

GENERAL INFORMATION:

Formation: **Marmaton**

Deviated: No Whipstock: ft (KB)

Time Tool Opened: 19:21:55

Time Test Ended: 00:48:39

Test Type: Conventional Bottom Hole (Reset)

Tester: Will MacLean

Unit No: 40

Interval: 4446.00 ft (KB) To 4480.00 ft (KB) (TVD)

Total Depth: 4480.00 ft (KB) (TVD)

Hole Diameter: 7.88 inches Hole Condition: Good

Reference Elevations: 3109.00 ft (KB)

3101.00 ft (CF)

KB to GR/CF: 8.00 ft

Serial #: 8322 Outside

Press @ Run Depth: psig @ 4448.00 ft (KB)

Start Date: 2012.06.21

End Date:

2012.06.22

Start Time: 17:42:05

End Time:

00:48:44

Capacity: 8000.00 psig

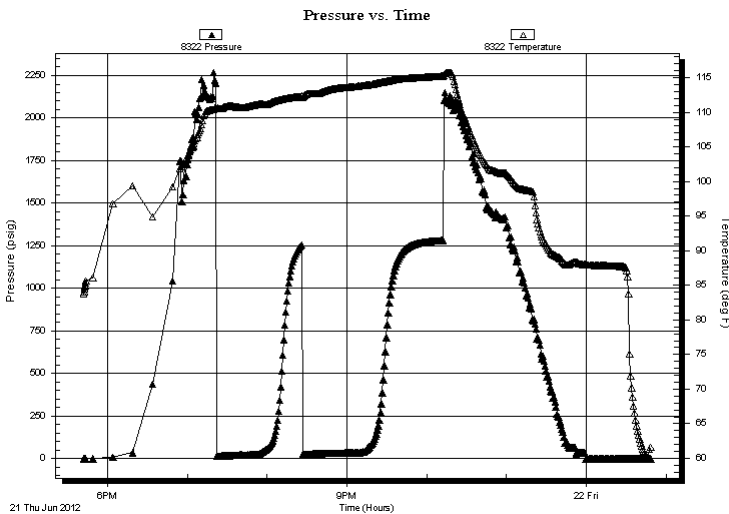
Last Calib.: 2012.06.22

Time On Btm:

Time Off Btm:

TEST COMMENT: IF- Weak Surface Blow Built to 1 1/4"
IS- No Blow
FF- Weak Surface Blow Built to 2"
FS- No Blow

PRESSURE SUMMARY



Time (Min.)	Pressure (psig)	Temp (deg F)	Annotation

Recovery

Length (ft)	Description	Volume (bbl)
20.00	GOCM 12%g 18%oil 70%m	0.10
40.00	GO 9%g 91%oil	0.20

Gas Rates

	Choke (inches)	Pressure (psig)	Gas Rate (Mcf/d)

* Recovery from multiple tests



**TRILOBITE
TESTING, INC.**

DRILL STEM TEST REPORT

FLUID SUMMARY

Shakespeare Oil Co. Inc.

36-16s-34w Scott Co. KS

202 W Main St.
Salem IL 62881

Janzen #1-36

Job Ticket: 45908

DST#: 5

ATTN: Tim Priest

Test Start: 2012.06.21 @ 17:42:00

Mud and Cushion Information

Mud Type: Gel Chem

Cushion Type:

Oil API:

33 deg API

Mud Weight: 9.00 lb/gal

Cushion Length:

ft

Water Salinity:

ppm

Viscosity: 53.00 sec/qt

Cushion Volume:

bbbl

Water Loss: 10.16 in³

Gas Cushion Type:

Resistivity: ohm.m

Gas Cushion Pressure:

psig

Salinity: 7400.00 ppm

Filter Cake: 2.00 inches

Recovery Information

Recovery Table

Length ft	Description	Volume bbbl
20.00	GOCM 12%g 18%oil 70%m	0.098
40.00	GO 9%g 91%oil	0.197

Total Length: 60.00 ft Total Volume: 0.295 bbl

Num Fluid Samples: 0

Num Gas Bombs: 0

Serial #:

Laboratory Name:

Laboratory Location:

Recovery Comments: API is 34 @ 70f = 33

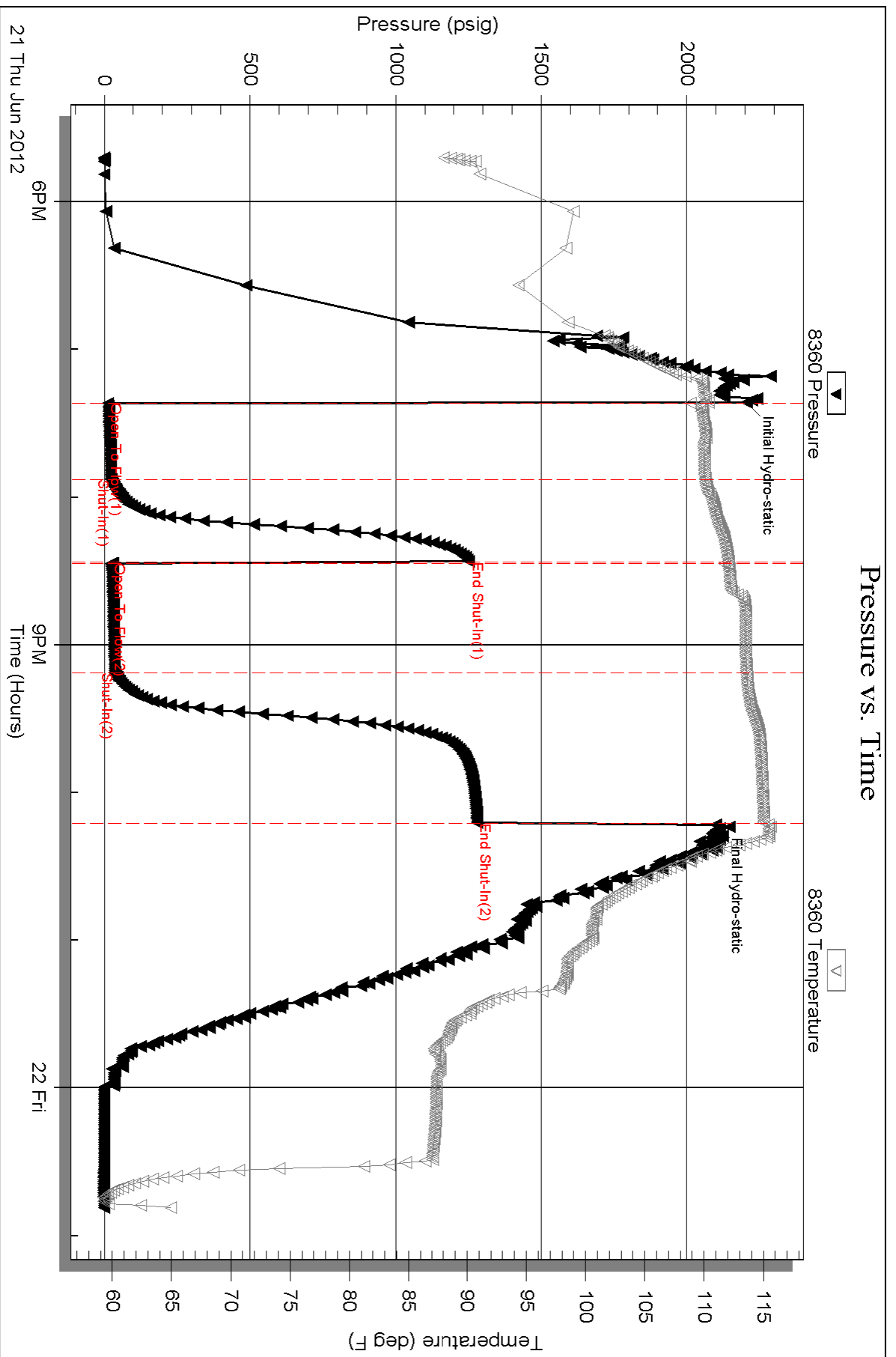
Serial #: 8360

Inside

Shakespeare Oil Co. Inc.

Janzen #1-36

DST Test Number: 5



Serial #: 8322

Outside Shakespeare Oil Co. Inc.

Janzen #1-36

DST Test Number: 5

