



**TRILOBITE
TESTING, INC**

DRILL STEM TEST REPORT

Shakespeare Oil Co. Inc.

36-16s-34w Scott Co. KS

202 W Main St.
Salem IL 62881

Janzen #1-36

Job Ticket: 45909

DST#: 6

ATTN: Tim Priest

Test Start: 2012.06.23 @ 07:44:00

GENERAL INFORMATION:

Formation: **Ft. Scott**

Deviated: No Whipstock: ft (KB)

Time Tool Opened: 09:23:55

Time Test Ended: 14:50:39

Test Type: Conventional Bottom Hole (Reset)

Tester: Will MacLean

Unit No: 40

Interval: 4565.00 ft (KB) To 4615.00 ft (KB) (TVD)

Total Depth: 4615.00 ft (KB) (TVD)

Hole Diameter: 7.88 inches Hole Condition: Good

Reference Elevations: 3109.00 ft (KB)

3101.00 ft (CF)

KB to GR/CF: 8.00 ft

Serial #: 8360

Press @ Run Depth: 71.52 psig @ ft (KB)

Start Date: 2012.06.23

End Date:

2012.06.23

Start Time: 07:44:00

End Time:

14:50:39

Capacity: 8000.00 psig

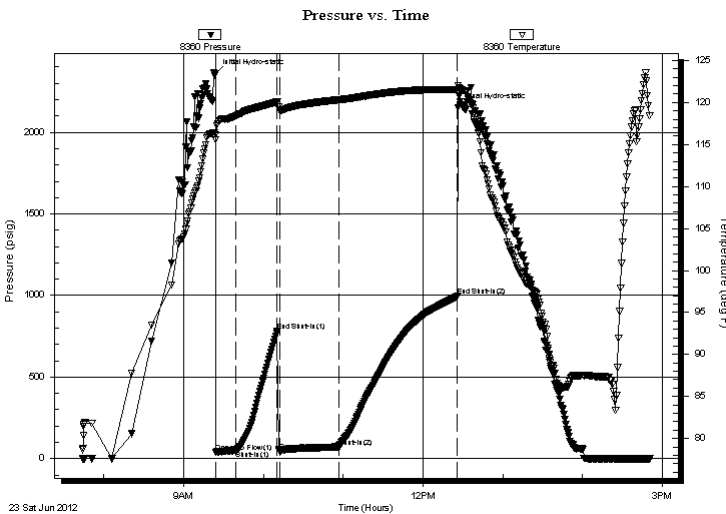
Last Calib.: 2012.06.23

Time On Btm: 2012.06.23 @ 09:23:40

Time Off Btm: 2012.06.23 @ 12:26:24

TEST COMMENT: IF- Strong Surface Blow Built to BOB in 4 3/4min
IS- No Blow
FF- Strong Surface Blow Built to BOB in 2min
FS- No Blow

PRESSURE SUMMARY



Time (Min.)	Pressure (psig)	Temp (deg F)	Annotation
0	2361.46	116.44	Initial Hydro-static
1	37.76	115.59	Open To Flow (1)
16	53.54	118.44	Shut-In(1)
47	778.97	120.08	End Shut-In(1)
49	46.39	119.15	Open To Flow (2)
93	71.52	120.32	Shut-In(2)
183	994.66	121.55	End Shut-In(2)
183	2151.76	122.01	Final Hydro-static

Recovery

Length (ft)	Description	Volume (bbl)
61.00	MOCG 15%g 24%oil 61%g	0.30
61.00	GOCM 16%g 26%oil 58%g	0.30
15.00	GOCM 3%g 44%oil 53%g	0.21
30.00	GO 11%g 89%oil	0.42
0.00	975' of GIP	0.00

* Recovery from multiple tests

Gas Rates

Choke (inches)	Pressure (psig)	Gas Rate (Mcf/d)



**TRILOBITE
TESTING, INC**

DRILL STEM TEST REPORT

FLUID SUMMARY

Shakespeare Oil Co. Inc.

36-16s-34w Scott Co. KS

202 W Main St.
Salem IL 62881

Janzen #1-36

Job Ticket: 45909

DST#: 6

ATTN: Tim Priest

Test Start: 2012.06.23 @ 07:44:00

Mud and Cushion Information

Mud Type: Gel Chem
Mud Weight: 9.00 lb/gal
Viscosity: 62.00 sec/qt
Water Loss: 9.58 in³
Resistivity: ohm.m
Salinity: 8000.00 ppm
Filter Cake: 2.00 inches

Cushion Type:
Cushion Length: ft
Cushion Volume: bbl
Gas Cushion Type:
Gas Cushion Pressure: psig

Oil API: 35 deg API
Water Salinity: ppm

Recovery Information

Recovery Table

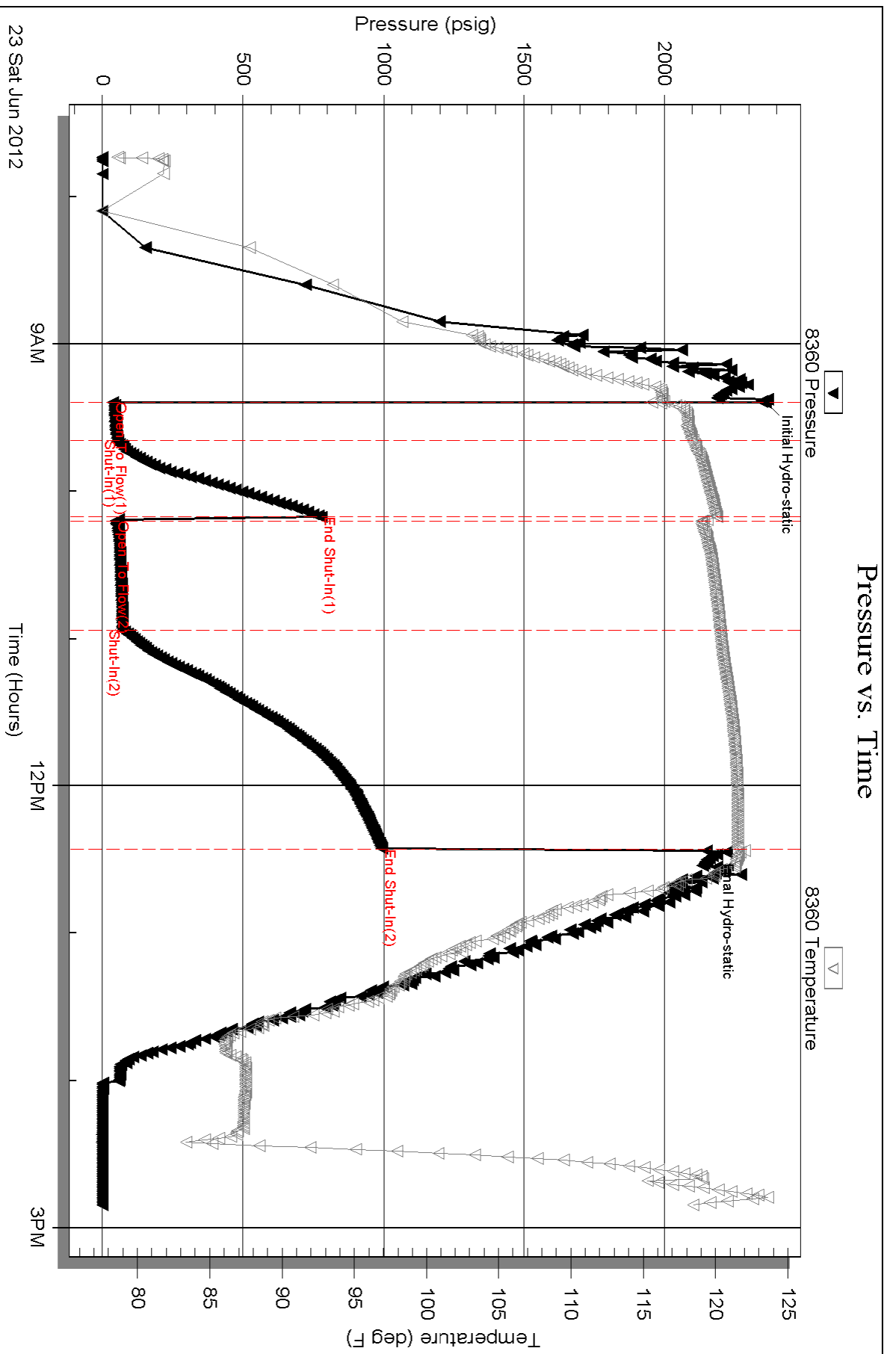
Length ft	Description	Volume bbl
61.00	MOCG 15%m 24%oil 61%g	0.300
61.00	GOCM 16%g 26%oil 58%m	0.300
15.00	GOCM 3%g 44%oil 53%m	0.210
30.00	GO 11%g 89%oil	0.421
0.00	975' of GIP	0.000

Total Length: 167.00 ft Total Volume: 1.231 bbl

Num Fluid Samples: 0 Num Gas Bombs: 0 Serial #:

Laboratory Name: Laboratory Location:

Recovery Comments: API is 40 @ 110f = 35



Serial #: 8322

Outside Shakespeare Oil Co. Inc.

Janzen #1-36

DST Test Number: 6

