

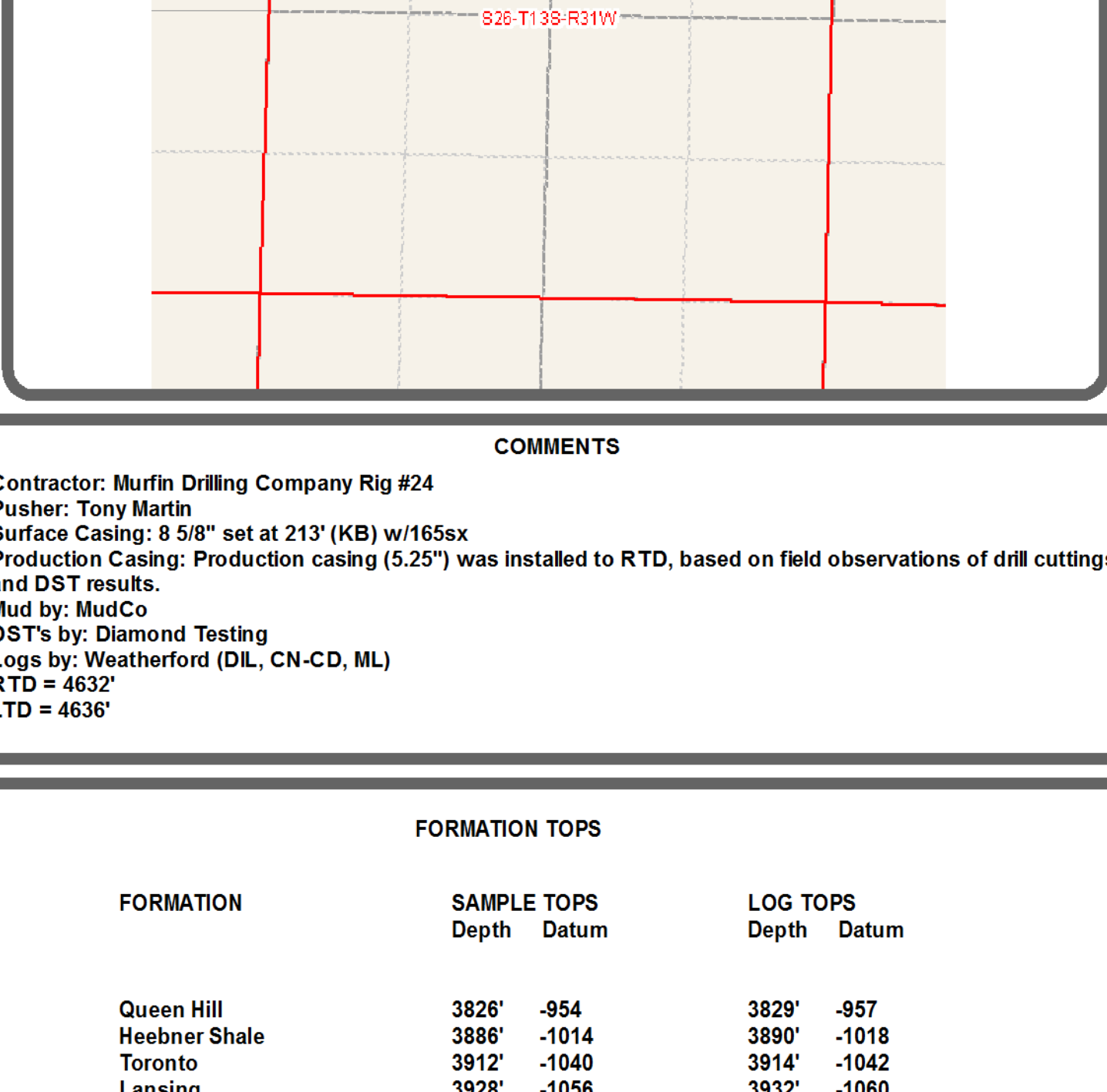
Scale 1:240 (5"=100') Imperial
Measured Depth Log

Well Name: Phillip #2-26
Location: 344' FNL, 1491' FWL, 26-13s-31w, Gove County, Kansas
License Number: API: 15-063-22005 Region: Gove County
Spud Date: 06/06/2012 Drilling Completed: 06/17/2012
Surface Coordinates: Lat: 38.9017933
Long: -100.7366141
Bottom Hole Coordinates: Vertical hole
Ground Elevation (ft): 2867' K.B. Elevation (ft): 2872'
Logged Interval (ft): 3800' To: RTD Total Depth (ft): 4632'
Formation: Mississippian at RTD
Type of Drilling Fluid: Chemical

Printed by MUD.LOG from WellSight Systems 1-800-447-1534 www.WellSight.com

GEOLOGIST

Name: Kent R. Matson
Company: Matson Geological Services, LLC
Address: 33300 W. 15th Street S.
Garden Plain, Kansas 67050
316-644-1975

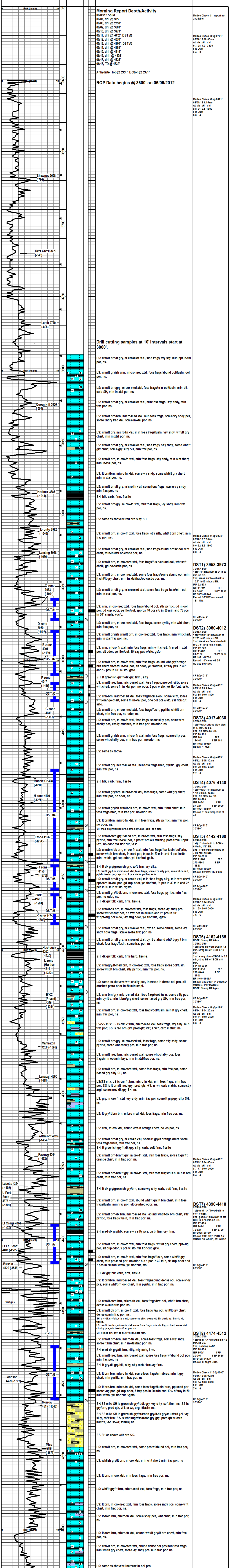


COMMENTS

Contractor: Murfin Drilling Company Rig #24
Pusher: Tony Martin
Surface Casing: 8 5/8" set at 213' (KB) w/165x
Production Casing: Production casing (5.25") was installed to RTD, based on field observations of drill cuttings and DST results.
Mud by: MudCo
DST's by: Diamond Testing
Logs by: Weatherford (DIL, CN-CD, ML)
RTD = 4632'
LTD = 4636'

FORMATION TOPS

FORMATION	SAMPLE TOPS		LOG TOPS	
	Depth	Datum	Depth	Datum
Queen Hill	3826'	-954	3829'	-957
Heebner Shale	3886'	-1014	3890'	-1018
Toronto	3912'	-1040	3914'	-1042
Lansing	3928'	-1056	3932'	-1060
Muncie Creek Shale	4082'	-1210	4087'	-1215
Stark Shale	4166'	-1294	4171'	-1299
Hushpuckney Shale	4202'	-1330	4207'	-1335
Marmaton	4268'	-1396	4272'	-1400
Upper Fort Scott	4373'	-1501	4378'	-1506
Little Osage Shale	4394'	-1522	4398'	-1526
Excello Shale	4420'	-1548	4427'	-1555
Johnson Zone	4499'	-1627	4506'	-1634
Morrow	4515'	-1643	4522'	-1650
Mississippian	4545'	-1673	4550'	-1678
RTD	4632'	-1760		
LTD			4636'	-1764



RTD 4632' -1760
LTD 4636' -1764