

T35S, R9W, 6th P.M.

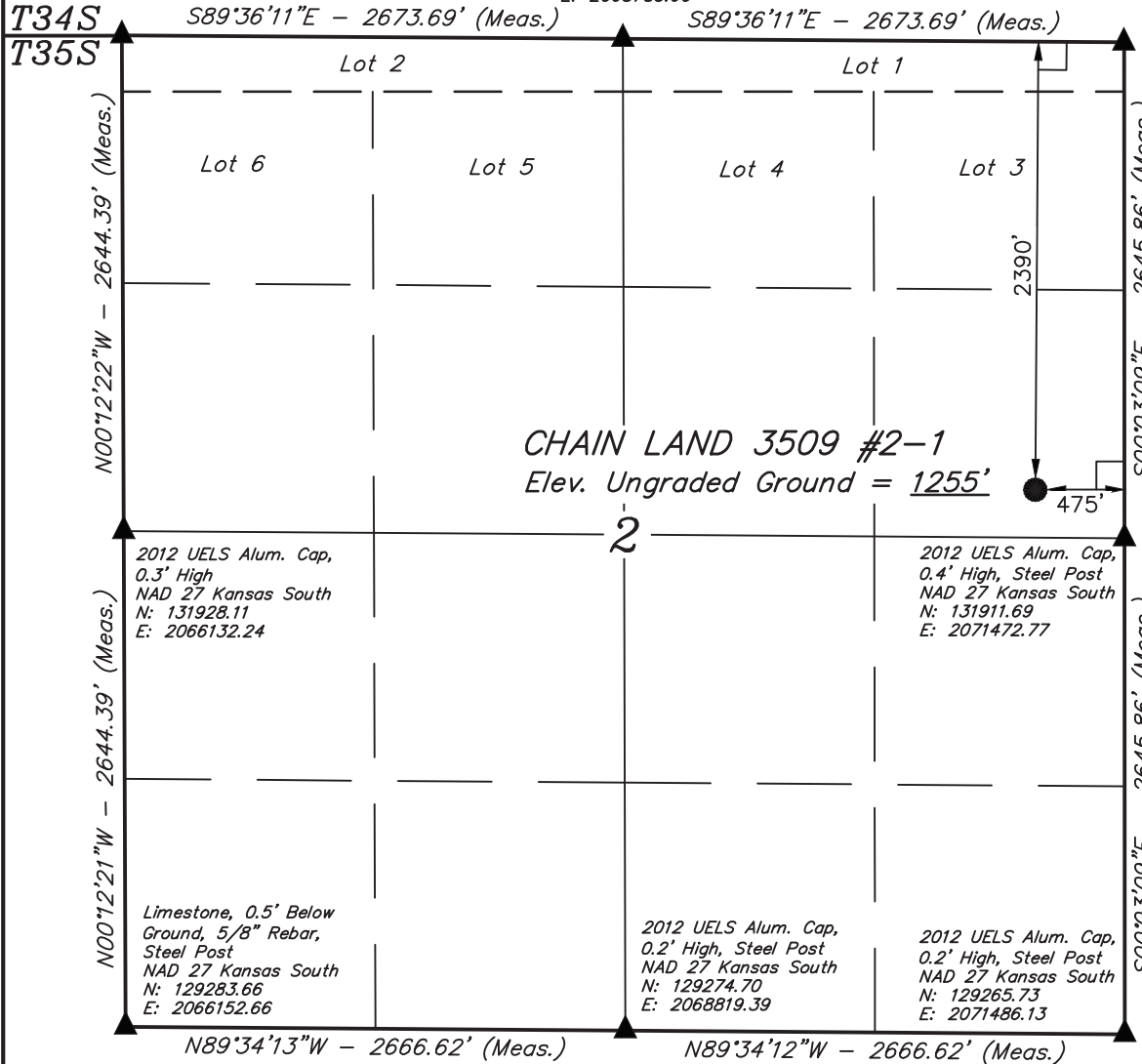
SGOMI

2.5" Alum. Cap
NAD 27 Kansas South
N: 134572.55
E: 2066111.81

2012 UELS Alum. Cap,
Flush W/ Ground, E-W Fence
NAD 27 Kansas South
N: 134565.09
E: 2068785.60

2.5" Alum. Cap
NAD 27 Kansas South
N: 134557.64
E: 2071459.39

Well location, CHAIN LAND 3509 #2-1, located as shown in the SE 1/4 NE 1/4 of Section 2, T35S, R9W, 6th P.M. Harper County, Kansas.

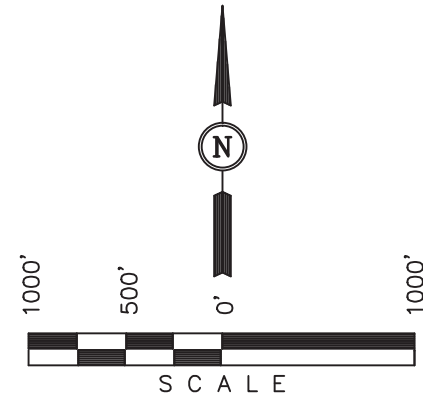


BASIS OF ELEVATION

SPOT ELEVATION LOCATED AT THE NORTHEAST CORNER OF SECTION 22, T33S, R7W, 6th P.M. TAKEN FROM THE ANTHONY, QUADRANGLE, KANSAS, HARPER COUNTY, 7.5 MINUTE QUAD (TOPOGRAPHIC MAP) PUBLISHED BY THE UNITED STATES DEPARTMENT OF THE INTERIOR, GEOLOGICAL SURVEY. SAID ELEVATION IS MARKED AS BEING 1348 FEET.

BASIS OF BEARINGS

BASIS OF BEARINGS IS A G.P.S. OBSERVATION.



CERTIFICATE

THIS IS TO CERTIFY THAT THE ABOVE PLAT WAS PREPARED FROM FIELD NOTES OF ACTUAL SURVEYS MADE BY ME OR UNDER MY SUPERVISION AND THAT THE SAME ARE TRUE AND CORRECT TO THE BEST OF MY KNOWLEDGE AND BELIEF.

Justin D. Smith
REGISTERED LAND SURVEYOR
REGISTRATION NO. 1458
STATE OF KANSAS

UINTAH ENGINEERING & LAND SURVEYING
85 SOUTH 200 EAST - VERNAL, UTAH 84078
(435) 789-1017

LEGEND:

- └─┘ = 90° SYMBOL
- = PROPOSED WELL HEAD.
- ▲ = SECTION CORNERS LOCATED.

NAD 83 (#2-1MS SURFACE LOCATION) LATITUDE = 37°01'45.91" (37.029419) LONGITUDE = 98°15'25.78" (98.257161)	SCALE 1" = 1000'	DATE SURVEYED: 07-17-12	DATE DRAWN: 07-20-12
NAD 27 (#2-1MS SURFACE LOCATION) LATITUDE = 37°01'45.81" (37.029392) LONGITUDE = 98°15'24.53" (98.256814)	PARTY B.L. D.W. C.C.	REFERENCES G.L.O. PLAT	
STATE PLANE NAD 27 (KANSAS SOUTH) N: 132168.80 E: 2070996.43	WEATHER HOT	FILE SGOMI	