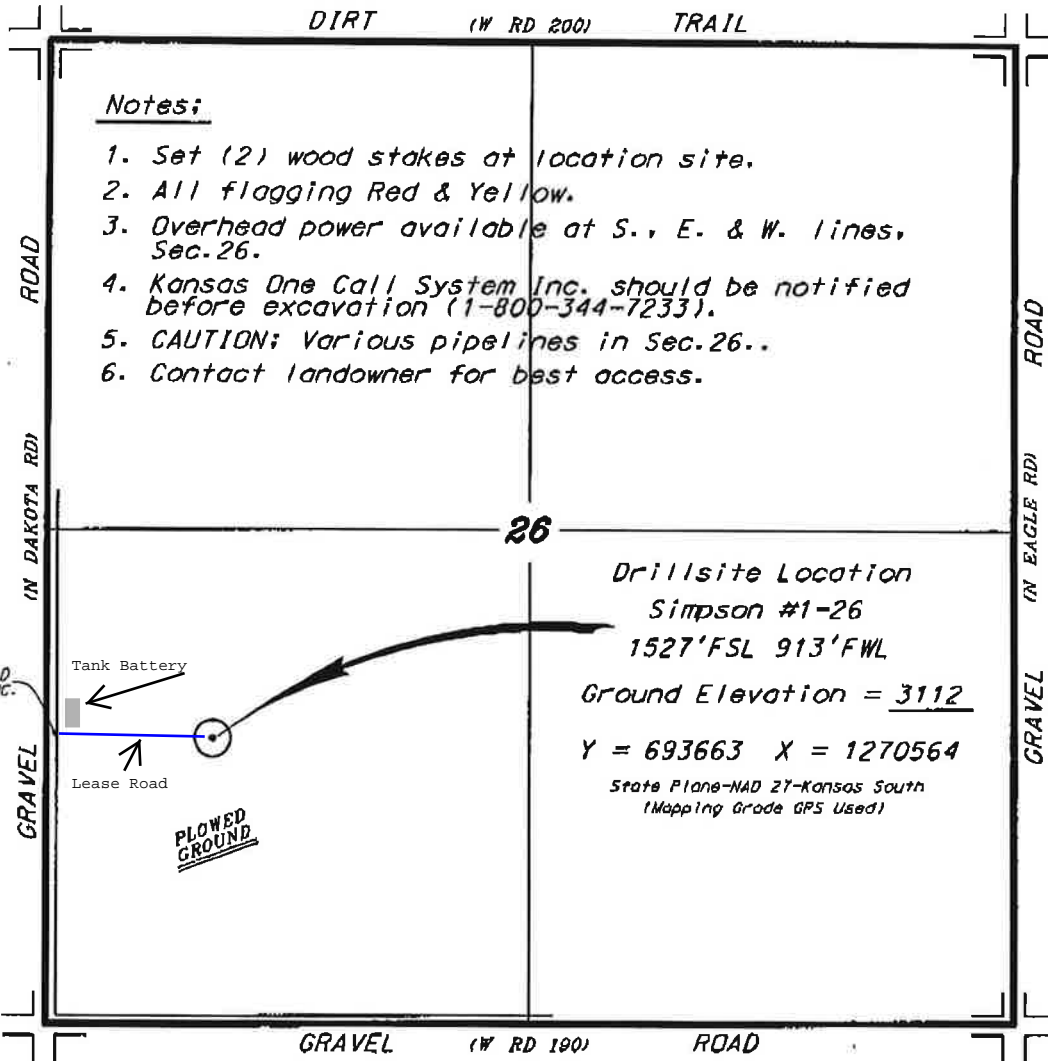


**NEW GULF OPERATING, LLC  
SIMPSON LEASE  
SW.1/4, SECTION 26, T17S, R34W  
SCOTT COUNTY, KANSAS**



\* Ingress and egress to location as shown on this plat is for public use only and may not be legally opened for public use. Contact landowner, tenant and county road department for access.

**Notes:**

1. Set (2) wood stakes at location site.
2. All flagging Red & Yellow.
3. Overhead power available at S., E. & W. lines, Sec. 26.
4. Kansas One Call System Inc. should be notified before excavation (1-800-344-7233).
5. CAUTION: Various pipelines in Sec. 26..
6. Contact landowner for best access.

**Drillsite Location**

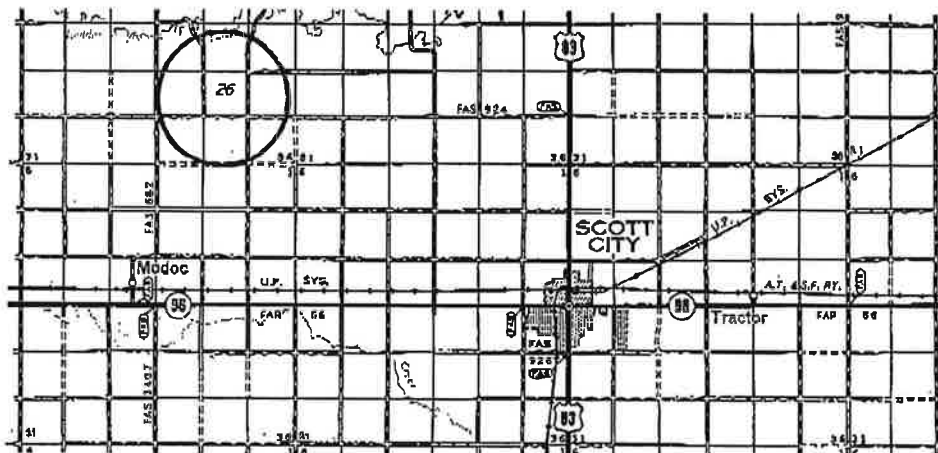
**Simpson #1-26**

**1527' FSL 913' FWL**

**Ground Elevation = 3112**

**Y = 693663 X = 1270564**

**State Plane-NAD 27-Kansas South  
(Mapping Grade GPS Used)**



• Controlling data is based upon the best maps and photographs available to us and upon a regular section of land containing 640 acres.  
 • Approximate section lines were determined using the normal standard of care of oilfield surveyors practicing in the state of Kansas. The section corners, which establish the precise section lines, were not necessarily located, and the exact location of the drillsite location in the section is not guaranteed. Therefore, the operator assuming this service and accepting this plat and all other parties relying thereon agree to hold Central Kansas Oilfield Services, Inc., its officers and employees harmless from all losses, costs and expenses and sold entities released from any liability from incidental or consequential damages.  
 \* Elevations derived from National Geodetic Vertical Datum.

Date August 8, 2012