

DIAMOND TESTING

P.O. Box 157

HOISINGTON, KANSAS 67544

(620) 653-7550 • (800) 542-7313

STC 30046.D1184

Company Vess Oil Corporation Lease & Well No. Mothes No. 8
 Elevation 2423 KB Formation Mississippi Effective Pay Ft. Ticket No. J2980
 Date 7-28-12 Sec. 2 Twp. 22S Range 24W County Hodgeman State Kansas
 Test Approved By Roger L. Martin Diamond Representative John C. Riedl

Formation Test No. 1 Interval Tested from 4,571 ft. to 4,635 ft. Total Depth 4,635 ft
 Packer Depth 4,566 ft. Size 6 3/4 in. Packer Depth ft. Size in.
 Packer Depth 4,571 ft. Size 6 3/4 in. Packer Depth ft. Size in.
 Depth of Selective Zone Set ft.

Top Recorder Depth (Inside) 4,574 ft. Recorder Number 30046 Cap. 6,000 psi.
 Bottom Recorder Depth (Outside) 4,632 ft. Recorder Number 11073 Cap. 4,000 psi.
 Below Straddle Recorder Depth ft. Recorder Number Cap. psi.

Drilling Contractor L. D. Drilling, Inc. - Rig 1 Drill Collar Length ft I.D. in.
 Mud Type Chemical Viscosity 48 Weight Pipe Length ft I.D. in.
 Weight 9.3 Water Loss 10.4 cc. Drill Pipe Length 4,545 ft I.D. 3 1/4 in.
 Chlorides 1,800 P.P.M. Test Tool Length 26 ft Tool Size 3 1/2-IF in.
 Jars: Make Sterling Serial Number 2 Anchor Length 34' perf. w/30' drill pipe Size 4 1/2-FH in.
 Did Well Flow? No Reversed Out No Surface Choke Size 1 in. Bottom Choke Size 5/8 in.
 Main Hole Size 7 7/8 in. Tool Joint Size 4 1/2-XH in.

Blow: 1st Open: Very weak blow. Dead in 15 mins. No blow back during shut-in.
 2nd Open: No blow initially. Received a surface blow. Dead in 15 mins. No blow back during shut-in.

Recovered 15 ft. of oil cut mud w/3 ins. of free oil = .153900 bbls. (Grind out: 10%-oil; 90%-mud)
 Recovered ft. of
 Recovered ft. of
 Recovered ft. of
 Recovered ft. of
 Recovered ft. of
 Remarks Tool Sample Grind Out: 15%-oil; 85%-mud

Time Set Packer(s) 6:10 P.M. Time Started off Bottom 9:10 P.M. Maximum Temperature 127°
 Initial Hydrostatic Pressure.....(A) 2193 P.S.I.
 Initial Flow Period.....Minutes 30 (B) 19 P.S.I. to (C) 22 P.S.I.
 Initial Closed In Period.....Minutes 45 (D) 583 P.S.I.
 Final Flow Period.....Minutes 45 (E) 23 P.S.I. to (F) 24 P.S.I.
 Final Closed In Period.....Minutes 60 (G) 120 P.S.I.
 Final Hydrostatic Pressure.....(H) 2171 P.S.I.

GENERAL INFORMATION

Client Information:

Company: VESS OIL CORPORATION
Contact: MIKE VESS
Phone: Fax: e-mail:

Site Information:

Contact: ROGER MARTIN
Phone: Fax: e-mail:

Well Information:

Name: MOTHES #8
Operator: VESS OIL CORPORATION
Location-Downhole:
Location-Surface: S2/22S/24W

Test Information:

Company: DIAMOND TESTING
Representative: JOHN RIEDL
Supervisor: ROGER MARTIN
Test Type: DST #1 CONVENTIONAL Job Number: D1184
Test Unit:
Start Date: 2012/07/28 Start Time: 16:30:00
End Date: 2012/07/28 End Time: 23:00:00
Report Date: Prepared By: JOHN RIEDL
Qualified By: ROGER MARTIN

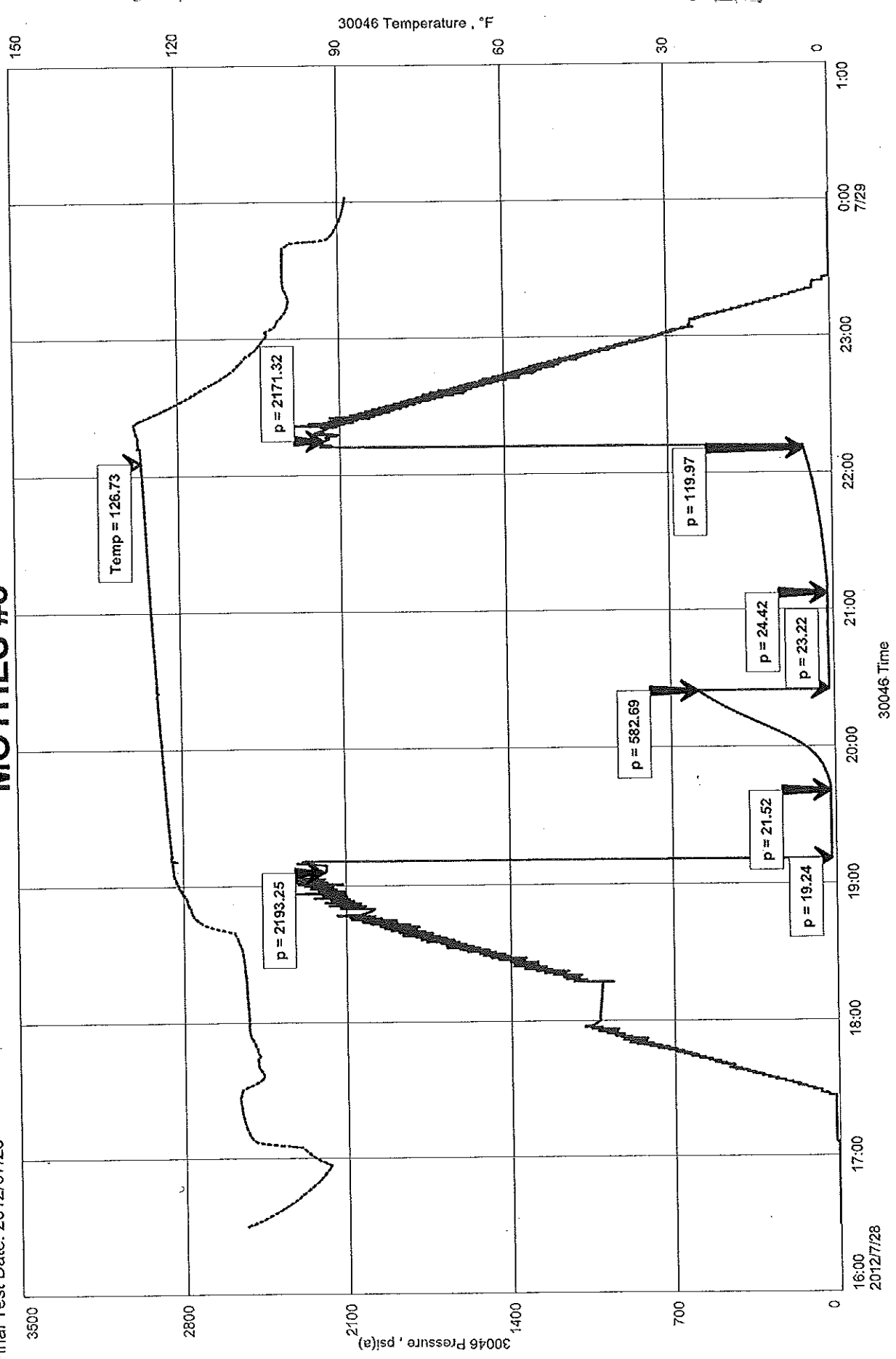
Remarks:

RECOVERY: 15' OIL CUT MUD WITH 3" OF FREE OIL

MOTHES #8
Formation: MISSISSIPPI
Job Number: D1184

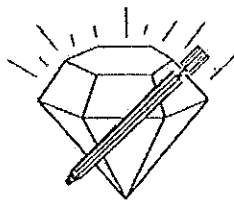
VESS OIL CORPORATION
Start Test Date: 2012/07/28
Final Test Date: 2012/07/28

MOTHES #8



30046 Time

2012/7/28



DIAMOND TESTING

P.O. Box 157

HOISINGTON, KANSAS 67544

(620) 653-7550 • (800) 542-7313

STC 30046.D1185

Company Vess Oil Corporation Lease & Well No. Mothes No. 8
 Elevation 2423 KB Formation Mississippi Effective Pay Ft. Ticket No. J2981
 Date 7-29-12 Sec. 2 Twp. 22S Range 24W County Hodgeman State Kansas
 Test Approved By Roger L. Martin Diamond Representative John C. Riedl

Formation Test No. 2 Interval Tested from 4,635 ft. to 4,655 ft. Total Depth 4,655 ft.
 Packer Depth 4,630 ft. Size 6 3/4 in. Packer Depth ft. Size in.
 Packer Depth 4,635 ft. Size 6 3/4 in. Packer Depth ft. Size in.
 Depth of Selective Zone Set ft.

Top Recorder Depth (Inside) 4,638 ft. Recorder Number 30046 Cap. 6,000 psi.
 Bottom Recorder Depth (Outside) 4,652 ft. Recorder Number 11073 Cap. 4,000 psi.
 Below Straddle Recorder Depth ft. Recorder Number Cap. psi.

Drilling Contractor L. D. Drilling, Inc. - Rig 1 Drill Collar Length ft I.D. in.
 Mud Type Chemical Viscosity 55 Weight Pipe Length ft I.D. in.
 Weight 9.3 Water Loss 10.4 cc. Drill Pipe Length 4,609 ft I.D. 3 1/4 in.
 Chlorides 1,800 P.P.M. Test Tool Length 26 ft Tool Size 3 1/2-IF in.
 Jars: Make Sterling Serial Number 2 Anchor Length 20 ft. Size 4 1/2-FH in.
 Did Well Flow? No Reversed Out No Surface Choke Size 1 in. Bottom Choke Size 5/8 in.
 Main Hole Size 7 7/8 in. Tool Joint Size 4 1/2-XH in.

Blow: 1st Open: Weak, 1/4 in. blow decreasing to a surface blow. No blow back during shut-in.

2nd Open: Surface blow throughout. No blow back during shut-in.

Recovered 5 ft. of gas cut oil = .051300 bbls. (Grind out: 10%-gas; 90%-oil) Gravity: 36 @ 60°
 Recovered 45 ft. of muddy water = .461700 bbls. (Grind out: 60%-water; 40%-mud) Chlorides: 14,000 Ppm RW: .40 @ 80°
 Recovered 50 ft. of TOTAL FLUID = .513000 bbls.
 Recovered ft. of
 Recovered ft. of
 Recovered ft. of
 Remarks Tool Sample Grind Out: 25%-oil; 25%-water; 50%-mud

Time Set Packer(s) 11:10 A.M. Time Started off Bottom 2:10 P.M. Maximum Temperature 132°
 Initial Hydrostatic Pressure.....(A) 2294 P.S.I.
 Initial Flow Period.....Minutes 30 (B) 18 P.S.I. to (C) 27 P.S.I.
 Initial Closed In Period.....Minutes 45 (D) 881 P.S.I.
 Final Flow Period.....Minutes 45 (E) 29 P.S.I. to (F) 39 P.S.I.
 Final Closed In Period.....Minutes 60 (G) 839 P.S.I.
 Final Hydrostatic Pressure.....(H) 2117 P.S.I.

GENERAL INFORMATION

Client Information:

Company: VESS OIL CORPORATION
Contact: BILL HORIGAN
Phone: Fax: e-mail:

Site Information:

Contact: ROGER MARTIN
Phone: Fax: e-mail:

Well Information:

Name: MOTHES #8
Operator: VESS OIL CORPORATION
Location-Downhole:
Location-Surface: S2/22S/24W

Test Information:

Company: DIAMOND TESTING
Representative: JOHN RIEDL
Supervisor: ROGER MARTIN
Test Type: DST #2 CONVENTIONAL Job Number: D1185
Test Unit:
Start Date: 2012/07/29 Start Time: 08:30:00
End Date: 2012/07/29 End Time: 15:10:00
Report Date: 2012/07/29 Prepared By: JOHN RIEDL

Remarks:

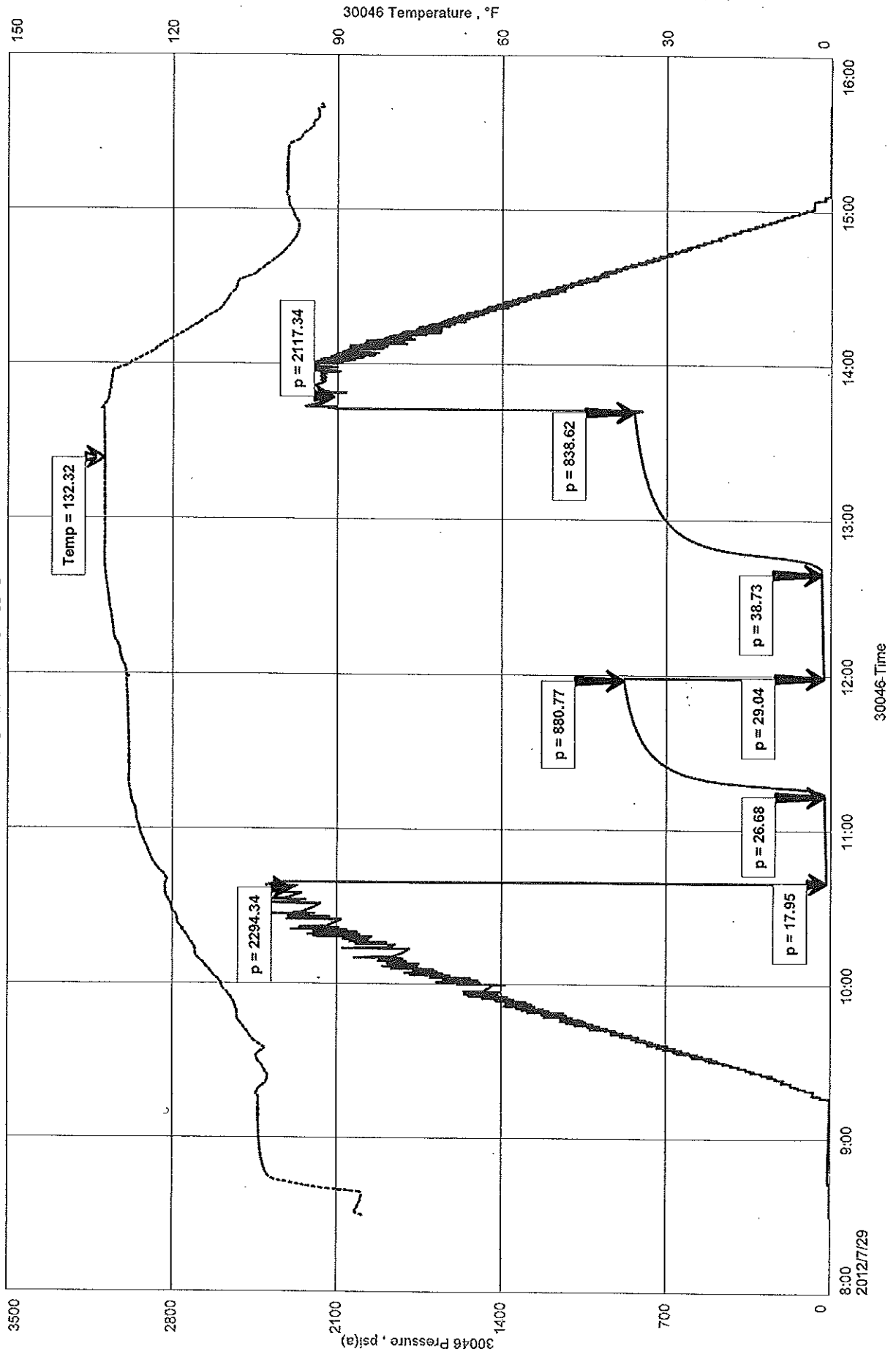
Qualified By: ROGER MARTIN

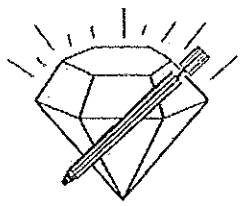
RECOVERY: 5' GAS CUT OIL, 45' MUDDY WATER

VESS OIL CORPORATION
Start Test Date: 2012/07/29
Final Test Date: 2012/07/29

MOTHESS #8
Formation: MISSISSIPPI
Job Number: D1185

MOTHESS #8





DIAMOND TESTING

P.O. Box 157

HOISINGTON, KANSAS 67544

(620) 653-7550 • (800) 542-7313

STC 30046.D1186

Company Vess Oil Corporation Lease & Well No. Mothes No. 8
 Elevation 2423 KB Formation Mississippi Effective Pay _____ Ft. Ticket No. J2982
 Date 7-30-12 Sec. 2 Twp. 22S Range 24W County Hodgeman State Kansas
 Test Approved By Roger L. Martin Diamond Representative John C. Riedl

Formation Test No. 3 Interval Tested from 4,625 ft. to 4,661 ft. Total Depth 4,661 ft.
 Packer Depth 4,620 ft. Size 6 3/4 in. Packer Depth _____ ft. Size _____ in.
 Packer Depth 4,625 ft. Size 6 3/4 in. Packer Depth _____ ft. Size _____ in.
 Depth of Selective Zone Set _____ ft.

Top Recorder Depth (Inside) 4,628 ft. Recorder Number 30046 Cap. 6,000 psi.
 Bottom Recorder Depth (Outside) 4,658 ft. Recorder Number 11073 Cap. 4,000 psi.
 Below Straddle Recorder Depth _____ ft. Recorder Number _____ Cap. _____ psi.

Drilling Contractor L. D. Drilling, Inc. - Rig 1 Drill Collar Length _____ ft I.D. _____ in.
 Mud Type Chemical Viscosity 50 Weight Pipe Length _____ ft I.D. _____ in.
 Weight 9.3 Water Loss 10.4 cc. Drill Pipe Length 4,599 ft I.D. 3 1/4 in.
 Chlorides 2,000 P.P.M. Test Tool Length 26 ft Tool Size 3 1/2-IF in.
 Jars: Make Sterling Serial Number 2 Anchor Length 36 ft. Size 4 1/2-FH in.
 Did Well Flow? No Reversed Out No Surface Choke Size 1 in. Bottom Choke Size 5/8 in.
 Main Hole Size 7 7/8 in. Tool Joint Size 4 1/2-XH in.

Blow: 1st Open: N/A

2nd Open: N/A

Recovered _____ ft. of _____
 Recovered _____ ft. of _____
 Recovered _____ ft. of _____
 Recovered _____ ft. of _____
 Recovered _____ ft. of _____
 Recovered _____ ft. of _____

Remarks MISRUNI PACKER FAILURE!

Time Set Packer(s) 3:00 A.M. Time Started off Bottom 3:20 A.M. Maximum Temperature 124°
 Initial Hydrostatic Pressure.....(A) 2231 P.S.I.
 Initial Flow Period.....Minutes 20 (B) _____ P.S.I. to (C) _____ P.S.I.
 Initial Closed In Period.....Minutes 0 (D) _____ P.S.I.
 Final Flow Period.....Minutes 0 (E) _____ P.S.I. to (F) _____ P.S.I.
 Final Closed In Period.....Minutes 0 (G) _____ P.S.I.
 Final Hydrostatic Pressure.....(H) 2115 P.S.I.

GENERAL INFORMATION

Client Information:

Company: VESS OIL CORPORATION

Contact: BILL HORIGAN

Phone: Fax: e-mail:

Site Information:

Contact: ROGER MARTIN

Phone: Fax: e-mail:

Well Information:

Name: MOTHES # 8

Operator: VESS OIL CORPORATION

Location-Downhole:

Location-Surface: S2/22S/24W

Test Information:

Company: DIAMOND TESTING

Representative: JOHN RIEDL

Supervisor: ROGER MARTIN

Test Type: DST #3 CONVENTIONAL Job Number: D1186

Test Unit:

Start Date: 2012/07/30 Start Time: 01:00:00

End Date: 2012/07/30 End Time: 05:20:00

Report Date: 2012/07/30 Prepared By: JOHN RIEDL

Qualified By: ROGER MARTIN

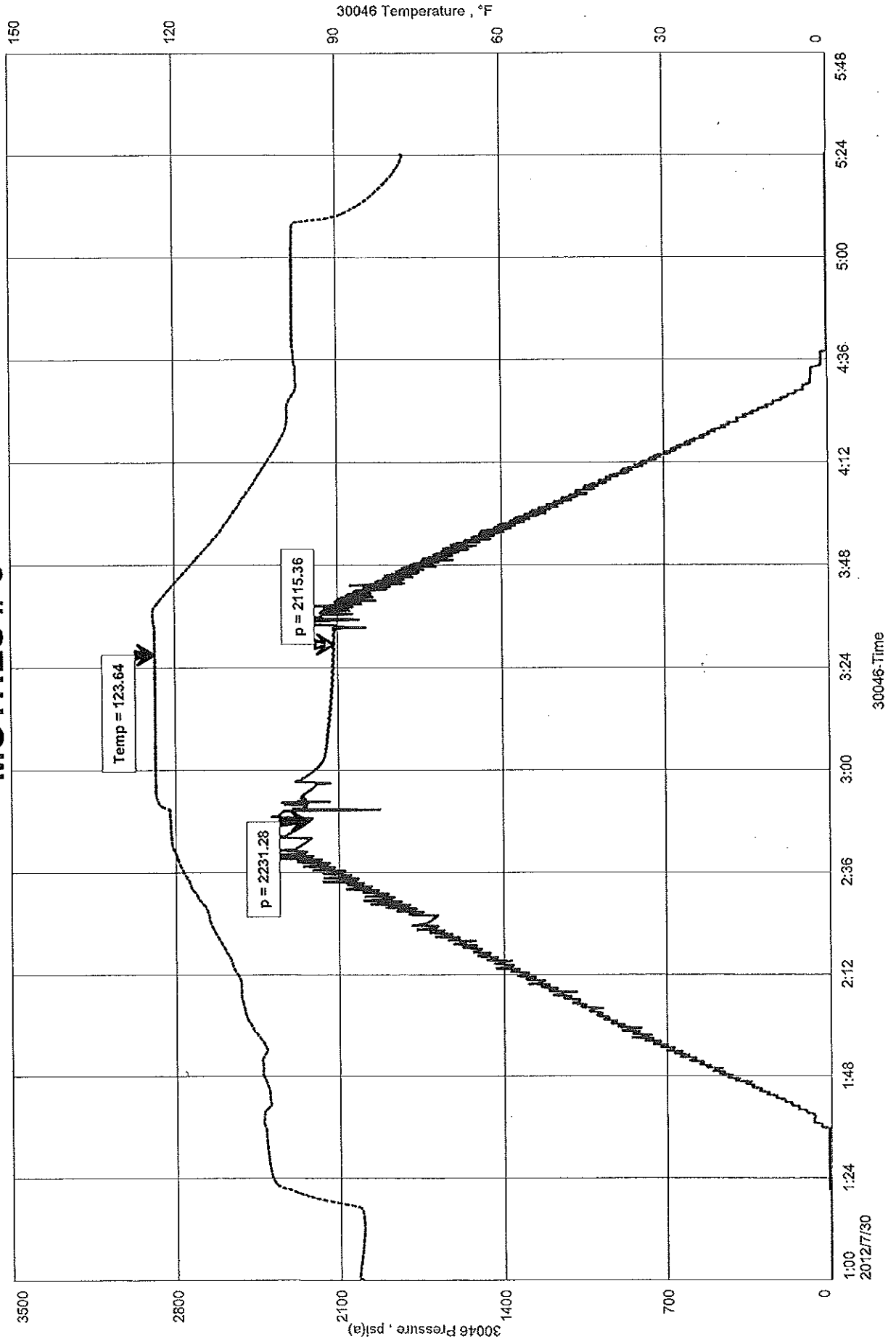
Remarks:

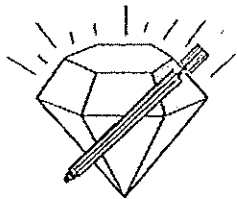
MISRUN; PACKER FAILURE

VESS OIL CORPORATION
Start Test Date: 2012/07/30
Final Test Date: 2012/07/30

MOTHES # 8
Formation: MISSISSIPPI
Job Number: D1186

MOTHES # 8





DIAMOND TESTING
P.O. Box 157
HOISINGTON, KANSAS 67544
(620) 653-7550 • (800) 542-7313
STC 30046.D1187

Company Vess Oil Corporation Lease & Well No. Mothes No. 8
Elevation 2423 KB Formation Mississippi Effective Pay Ft. Ticket No. J2983
Date 7-30-12 Sec. 2 Twp. 22S Range 24W County Hodgeman State Kansas
Test Approved By Roger L. Martin Diamond Representative John C. Riedl

Formation Test No. 4 Interval Tested from 4,571 ft. to 4,661 ft. Total Depth 4,661 ft.
Packer Depth 4,566 ft. Size 6 3/4 in. Packer Depth ft. Size in.
Packer Depth 4,571 ft. Size 6 3/4 in. Packer Depth ft. Size in.
Depth of Selective Zone Set ft.

Top Recorder Depth (Inside) 4,574 ft. Recorder Number 30046 Cap. 6,000 psi.
Bottom Recorder Depth (Outside) 4,658 ft. Recorder Number 11073 Cap. 4,000 psi.
Below Straddle Recorder Depth ft. Recorder Number Cap. psi.

Drilling Contractor L. D. Drilling, Inc. - Rig 1 Drill Collar Length ft I.D. in.
Mud Type Chemical Viscosity 50 Weight Pipe Length ft I.D. in.
Weight 9.3 Water Loss 10.4 cc. Drill Pipe Length 4,545 ft I.D. 3 1/4 in.
Chlorides 2,000 P.P.M. Test Tool Length 26 ft Tool Size 3 1/2-IF in.
Jars: Make Sterling Serial Number 2 Anchor Length 27' perf. w/63' drill pipe Size 4 1/2-FH in.
Did Well Flow? No Reversed Out No Surface Choke Size 1 in. Bottom Choke Size 5/8 in.
Main Hole Size 7 7/8 in. Tool Joint Size 4 1/2-XH in.

Blow: 1st Open: Weak blow slowly increasing to 2 ins. No blow back during shut-in.
2nd Open: Very weak blow. Dead in 10 mins. No blow back during shut-in.

Recovered 60 ft. of drilling mud = .615600 bbls. (Grind out: 100%-mud)
Recovered ft. of
Recovered ft. of
Recovered ft. of
Recovered ft. of
Recovered ft. of

Remarks Tool Sample Grind Out: 100%-mud

Time Set Packer(s) 7:25 A.M. Time Started off Bottom 10:25 A.M. Maximum Temperature 129°
Initial Hydrostatic Pressure.....(A) 2220 P.S.I.
Initial Flow Period.....Minutes 30 (B) 24 P.S.I. to (C) 34 P.S.I.
Initial Closed In Period.....Minutes 45 (D) 842 P.S.I.
Final Flow Period.....Minutes 45 (E) 37 P.S.I. to (F) 47 P.S.I.
Final Closed In Period.....Minutes 60 (G) 797 P.S.I.
Final Hydrostatic Pressure.....(H) 2149 P.S.I.

GENERAL INFORMATION

Client Information:

Company: VESS OIL CORPORATION

Contact: BILL HORIGAN

Phone: Fax: e-mail:

Site Information:

Contact: ROGER MARTIN

Phone: Fax: e-mail:

Well Information:

Name: MOTHES #8

Operator: VESS OIL CORPORATION

Location-Downhole:

Location-Surface: S2/22S/24W

Test Information:

Company: DIAMOND TESTING

Representative: JOHN RIEDL

Supervisor: ROGER MARTIN

Test Type: DST #4 CONVENTIONAL Job Number: D1187

Test Unit:

Start Date: 2012/07/30 Start Time: 05:30:00

End Date: 2012/07/30 End Time: 12:15:00

Report Date: 2012/07/30 Prepared By: JOHN RIEDL

Qualified By: ROGER MARTIN

Remarks:

RECOVERY: 60' DRILLING MUD

MOTHES #8
Formation: MISSISSIPPI
Job Number: D1187

ESS OIL CORPORATION
Start Test Date: 2012/07/30
Final Test Date: 2012/07/30

MOTHES #8

