



## DRILL STEM TEST REPORT

Prepared For: **McCoy Petroleum Corp.**

8080 E Central STE 300  
Wichita, KS 67206

ATTN: Jerry Smith

**Fitzgerald "A" #3-30**

**30-30s-31w Haskell,KS**

Start Date: 2012.06.13 @ 07:08:16

End Date: 2012.06.13 @ 17:25:46

Job Ticket #: 48280                      DST #: 1

Trilobite Testing, Inc

PO Box 362 Hays, KS 67601

ph: 785-625-4778 fax: 785-625-5620

Printed: 2012.06.15 @ 14:46:58

McCoy Petroleum Corp.

30-30s-31w Haskell,KS

Fitzgerald "A" #3-30

DST # 1

KC Swope

2012.06.13



**TRILOBITE  
TESTING, INC**

# DRILL STEM TEST REPORT

McCoy Petroleum Corp.  
8080 E Central STE 300  
Wichita, KS 67206  
ATTN: Jerry Smith

**30-30s-31w Haskell,KS**  
**Fitzgerald "A" #3-30**  
Job Ticket: 48280      **DST#: 1**  
Test Start: 2012.06.13 @ 07:08:16

## GENERAL INFORMATION:

Formation: **KC Swope**  
Deviated: No Whipstock: 0.00 ft (KB)  
Time Tool Opened: 09:53:16  
Time Test Ended: 17:25:46  
Interval: **4672.00 ft (KB) To 4697.00 ft (KB) (TVD)**  
Total Depth: 4697.00 ft (KB) (TVD)  
Hole Diameter: 7.88 inches Hole Condition: Good  
Test Type: Conventional Bottom Hole (Initial)  
Tester: Shane McBride  
Unit No: 55  
Reference Elevations: 2858.00 ft (KB)  
2845.00 ft (CF)  
KB to GR/CF: 13.00 ft

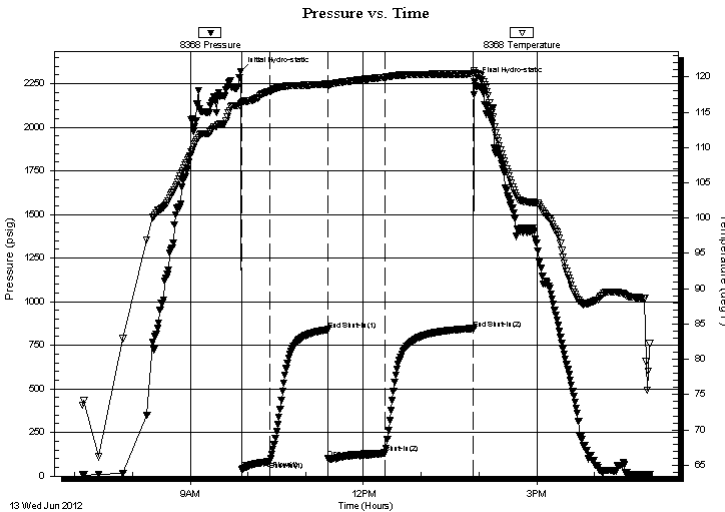
## Serial #: 8368

Inside

Press @ Run Depth: 132.34 psig @ 4673.00 ft (KB)      Capacity: 8000.00 psig  
Start Date: 2012.06.13      End Date: 2012.06.13      Last Calib.: 2012.06.13  
Start Time: 07:08:16      End Time: 16:57:46      Time On Btm: 2012.06.13 @ 09:52:16  
Time Off Btm: 2012.06.13 @ 13:55:31

TEST COMMENT: IF: BOB @ 7 min.  
IS: 2 1/2" Return Died back to 1/2".  
FF: BOB @ 4 min.  
FS: 2" Return died back to weak return.

## PRESSURE SUMMARY



Time (Min.)	Pressure (psig)	Temp (deg F)	Annotation
0	2321.05	116.22	Initial Hydro-static
1	36.95	116.25	Open To Flow (1)
31	84.62	117.97	Shut-In(1)
91	839.76	118.98	End Shut-In(1)
91	101.22	118.70	Open To Flow (2)
151	132.34	119.95	Shut-In(2)
242	844.60	120.45	End Shut-In(2)
244	2261.68	120.66	Final Hydro-static

## Recovery

Length (ft)	Description	Volume (bbl)
70.00	g m 10g 90m	0.34
240.00	g s o c m 20g 5o 75m	1.18
0.00	590' weak gas in pipe	0.00

## Gas Rates

	Choke (inches)	Pressure (psig)	Gas Rate (Mcf/d)



**TRILOBITE  
TESTING, INC**

# DRILL STEM TEST REPORT

McCoy Petroleum Corp.  
8080 E Central STE 300  
Wichita, KS 67206  
ATTN: Jerry Smith

**30-30s-31w Haskell, KS**  
**Fitzgerald "A" #3-30**  
Job Ticket: 48280      **DST#: 1**  
Test Start: 2012.06.13 @ 07:08:16

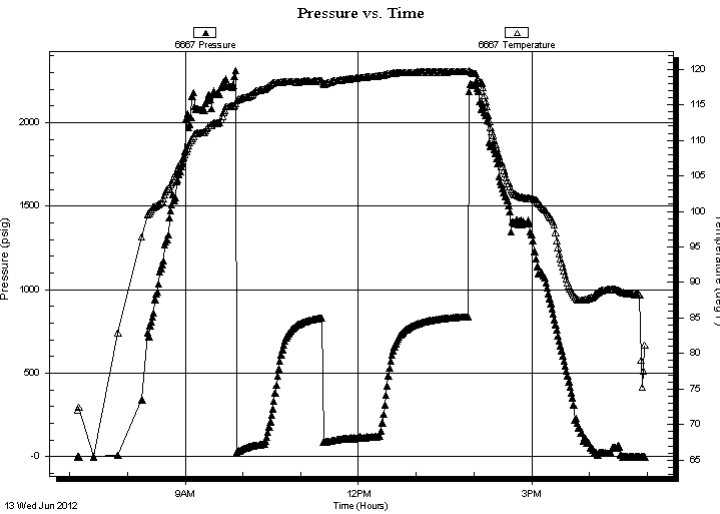
## GENERAL INFORMATION:

Formation: **KC Swope**  
Deviated: No      Whipstock: 0.00 ft (KB)  
Time Tool Opened: 09:53:16  
Time Test Ended: 17:25:46  
Interval: **4672.00 ft (KB) To 4697.00 ft (KB) (TVD)**  
Total Depth: 4697.00 ft (KB) (TVD)  
Hole Diameter: 7.88 inches      Hole Condition: Good  
Test Type: Conventional Bottom Hole (Initial)  
Tester: Shane McBride  
Unit No: 55  
Reference Elevations: 2858.00 ft (KB)  
2845.00 ft (CF)  
KB to GR/CF: 13.00 ft

## Serial #: 6667      Outside

Press @ Run Depth:      psig @ 4673.00 ft (KB)      Capacity: 8000.00 psig  
Start Date: 2012.06.13      End Date: 2012.06.13      Last Calib.: 2012.06.13  
Start Time: 07:08:16      End Time: 16:57:46      Time On Btm:  
Time Off Btm:

TEST COMMENT: IF: BOB @ 7 min.  
IS: 2 1/2" Return Died back to 1/2".  
FF: BOB @ 4 min.  
FS: 2" Return died back to weak return.



## PRESSURE SUMMARY

Time (Min.)	Pressure (psig)	Temp (deg F)	Annotation

## Recovery

Length (ft)	Description	Volume (bbl)
70.00	g m 10g 90m	0.34
240.00	g s o c m 20g 5o 75m	1.18
0.00	590' weak gas in pipe	0.00

## Gas Rates

Choke (inches)	Pressure (psig)	Gas Rate (Mcf/d)



**TRILOBITE  
TESTING, INC**

# DRILL STEM TEST REPORT

**TOOL DIAGRAM**

McCoy Petroleum Corp.

**30-30s-31w Haskell,KS**

8080 E Central STE 300  
Wichita, KS 67206

**Fitzgerald "A" #3-30**

Job Ticket: 48280

**DST#: 1**

ATTN: Jerry Smith

Test Start: 2012.06.13 @ 07:08:16

## Tool Information

Drill Pipe:	Length: 4319.00 ft	Diameter: 3.80 inches	Volume: 60.58 bbl	Tool Weight: 2500.00 lb
Heavy Wt. Pipe:	Length: 0.00 ft	Diameter: 0.00 inches	Volume: 0.00 bbl	Weight set on Packer: 30000.00 lb
Drill Collar:	Length: 332.00 ft	Diameter: 2.25 inches	Volume: 1.63 bbl	Weight to Pull Loose: 105000.0 lb
			<u>Total Volume: 62.21 bbl</u>	Tool Chased 0.00 ft
Drill Pipe Above KB:	6.00 ft			String Weight: Initial 87000.00 lb
Depth to Top Packer:	4672.00 ft			Final 89000.00 lb
Depth to Bottom Packer:	ft			
Interval between Packers:	25.00 ft			
Tool Length:	52.00 ft			
Number of Packers:	2	Diameter: 6.75 inches		

Tool Comments:

Tool Description	Length (ft)	Serial No.	Position	Depth (ft)	Accum. Lengths
------------------	-------------	------------	----------	------------	----------------

Change Over Sub	1.00			4646.00	
Shut In Tool	5.00			4651.00	
Hydraulic tool	5.00			4656.00	
Jars	5.00			4661.00	
Safety Joint	2.00			4663.00	
Packer	5.00			4668.00	27.00 Bottom Of Top Packer
Packer	4.00			4672.00	
Stubb	1.00			4673.00	
Recorder	0.00	6667	Outside	4673.00	
Recorder	0.00	8368	Inside	4673.00	
Perforations	19.00			4692.00	
Bullnose	5.00			4697.00	25.00 Bottom Packers & Anchor

**Total Tool Length: 52.00**



**TRILOBITE  
TESTING, INC**

# DRILL STEM TEST REPORT

**FLUID SUMMARY**

McCoy Petroleum Corp.

**30-30s-31w Haskell,KS**

8080 E Central STE 300  
Wichita, KS 67206

**Fitzgerald "A" #3-30**

Job Ticket: 48280

**DST#: 1**

ATTN: Jerry Smith

Test Start: 2012.06.13 @ 07:08:16

## Mud and Cushion Information

Mud Type: Gel Chem

Cushion Type:

Oil API:

0 deg API

Mud Weight: 9.00 lb/gal

Cushion Length:

ft

Water Salinity:

0 ppm

Viscosity: 50.00 sec/qt

Cushion Volume:

bbbl

Water Loss: 10.38 in<sup>3</sup>

Gas Cushion Type:

Resistivity: 0.00 ohm.m

Gas Cushion Pressure:

psig

Salinity: 1500.00 ppm

Filter Cake: 1.00 inches

## Recovery Information

Recovery Table

Length ft	Description	Volume bbl
70.00	g m 10g 90m	0.344
240.00	g s o c m 20g 5o 75m	1.180
0.00	590' weak gas in pipe	0.000

Total Length: 310.00 ft

Total Volume: 1.524 bbl

Num Fluid Samples: 0

Num Gas Bombs: 0

Serial #:

Laboratory Name:

Laboratory Location:

Recovery Comments:

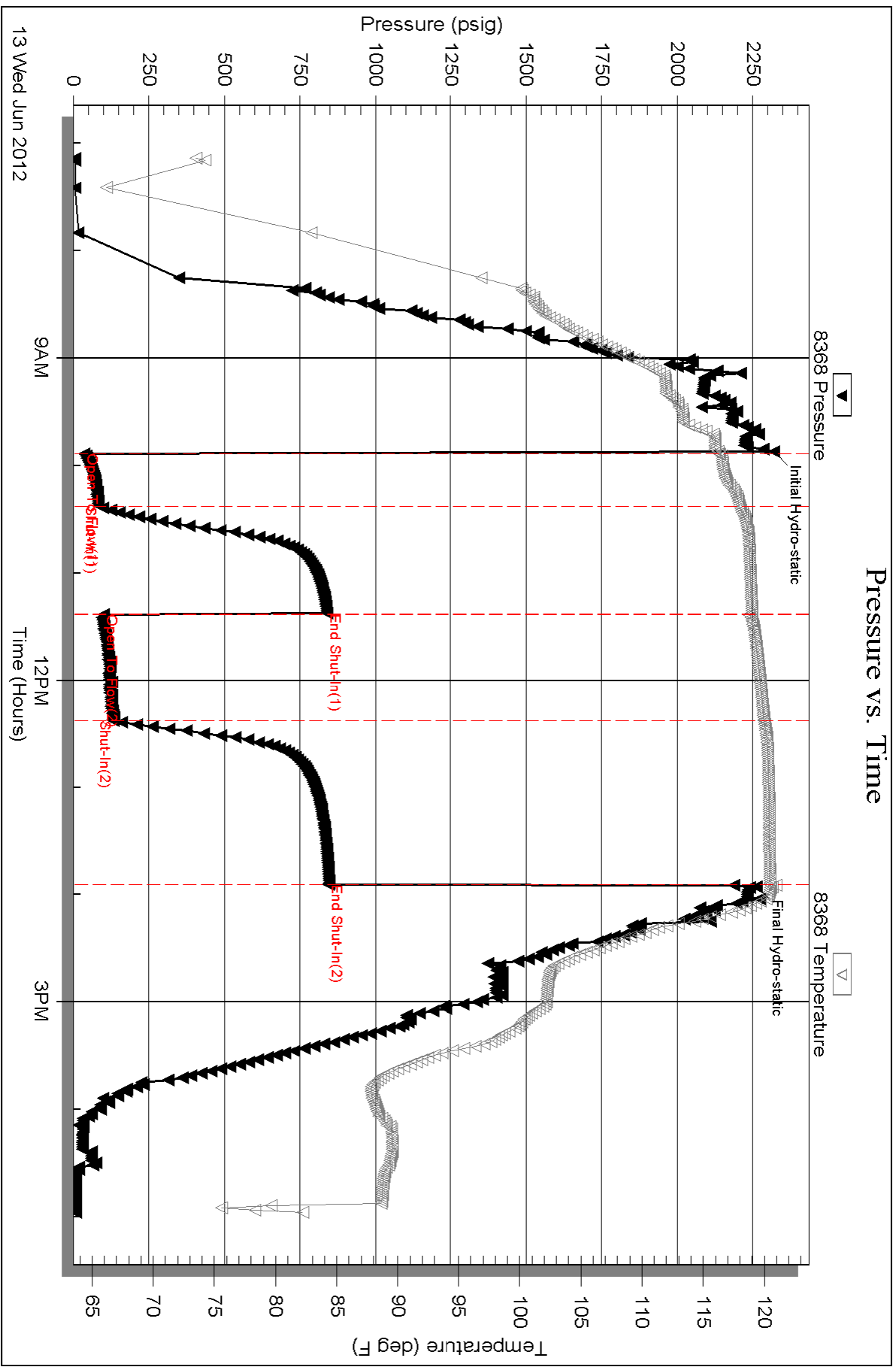
Serial #: 8368

Inside

McCoy Petroleum Corp.

Fitzgerald "A" #3-30

DST Test Number: 1



Triobite Testing, Inc

Ref. No: 48280

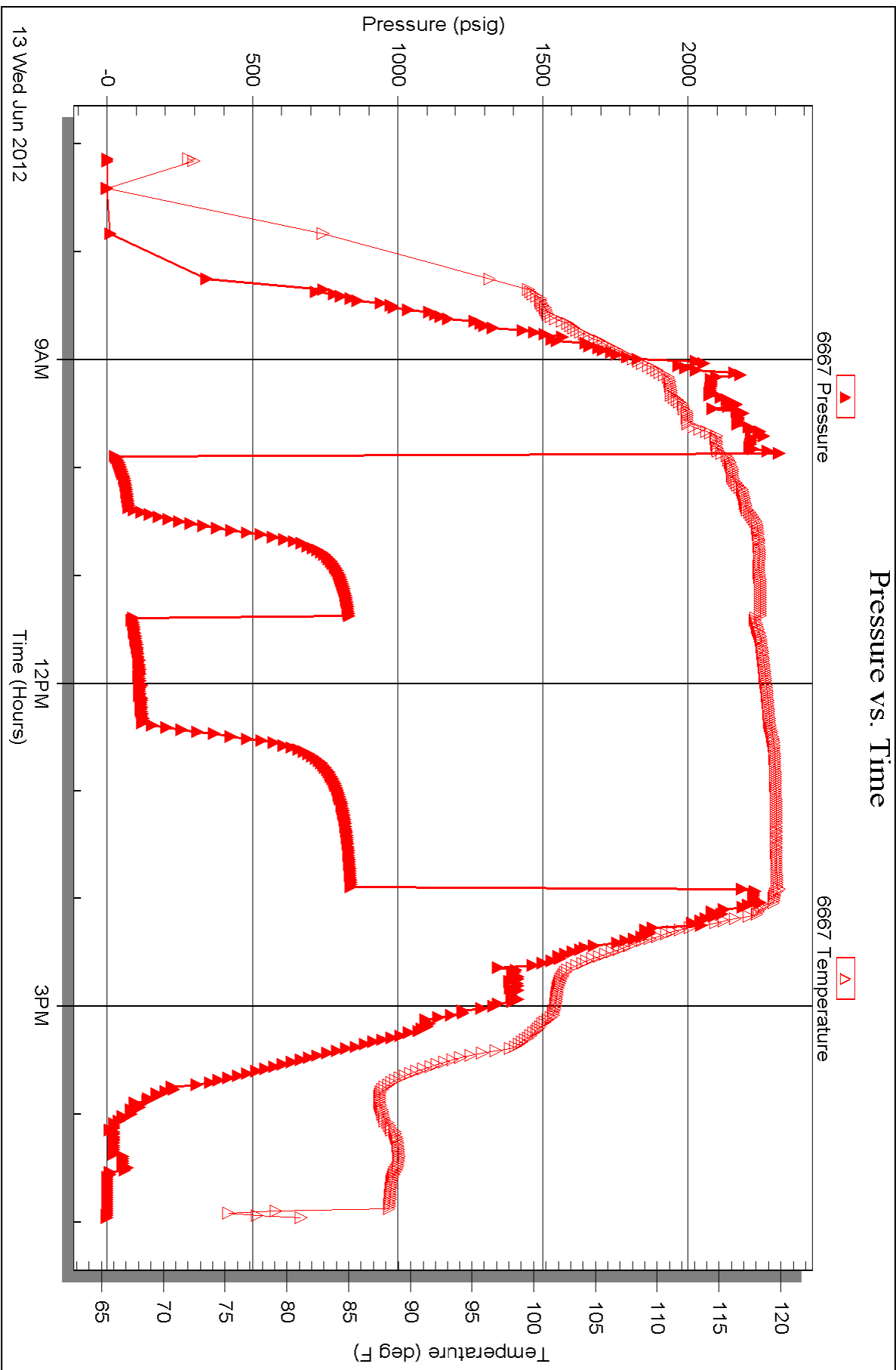
Printed: 2012.06.15 @ 14:47:00

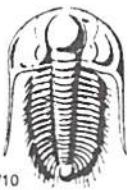
Serial #: 6667

Outside McCoy Petroleum Corp.

Fitzgerald "A" #3-30

DST Test Number: 1





# TRILOBITE TESTING INC.

P.O. Box 1733 • Hays, Kansas 67601

## Test Ticket

NO. 48280

Well Name & No. Fitzgerald "A" #3-30 Test No. 1 Date 6/13/12  
 Company McCoy Petroleum Corp. Elevation 2858 KB 2845 GL  
 Address 8080 E central STE 300 Wichita ks 67206  
 Co. Rep / Geo. Jerry Smith Rig Sterling Rig #5  
 Location: Sec. 30 Twp. 30 Rge. 31 W Co. Haskell State Ks

Interval Tested 4672 - 4697 Zone Tested KC Swope  
 Anchor Length 25 Drill Pipe Run 4319 Mud Wt. 9.1  
 Top Packer Depth 4668 Drill Collars Run 332 Vis 50  
 Bottom Packer Depth 4672 Wt. Pipe Run 0 WL 10.4  
 Total Depth 4697 Chlorides 1500 ppm System LCM 1

Blow Description BoB @ 7 min.  
2 1/2" Return Died back to 1/2"  
BoB @ 4 min.  
2" Return Died back to weak return

Rec	Feet of	%gas	%oil	%water	%mud
<u>20</u>	<u>gm</u>	<u>10%</u>	<u>Trace</u>	<u>90%</u>	<u>90%</u>
<u>240'</u>	<u>gsocm</u>	<u>20%</u>	<u>5%</u>	<u>75%</u>	<u>75%</u>
Rec	Feet of	%gas	%oil	%water	%mud
Rec	Feet of <u>590' wear gas in pipe</u>	%gas	%oil	%water	%mud
Rec	Feet of	%gas	%oil	%water	%mud

Rec Total 310' BHT 121° Gravity \_\_\_\_\_ API RW \_\_\_\_\_ @ \_\_\_\_\_ F Chlorides \_\_\_\_\_ ppm

- (A) Initial Hydrostatic 2321
- (B) First Initial Flow 30
- (C) First Final Flow 84
- (D) Initial Shut-In 839
- (E) Second Initial Flow 101
- (F) Second Final Flow 132
- (G) Final Shut-In 844
- (H) Final Hydrostatic 2261

- Test 1250
- Jars 250
- Safety Joint 75
- Circ Sub N/C
- Hourly Standby 1h 100
- Mileage 196 RT 161.20
- Sampler
- Straddle
- Shale Packer
- Extra Packer
- Extra Recorder
- Day Standby
- Accessibility

T-On Location 06:30  
 T-Started 07:08  
 T-Open 09:53  
 T-Pulled 13:53  
 T-Out 17:25

Comments \_\_\_\_\_  
 \_\_\_\_\_  
 \_\_\_\_\_  
 Sub Total 0  
 Total 1836.20

Initial Open 30  
 Initial Shut-In 60  
 Final Flow 60  
 Final Shut-In 90

Approved By [Signature] Sub Total 1836.20  
 Our Representative [Signature]  
 MP/DST Disc't \_\_\_\_\_

Trilobite Testing Inc. shall not be liable for damaged of any kind of the property or personnel of the one for whom a test is made, or for any loss suffered or sustained, directly or indirectly, through the use of its equipment, or its statements or opinion concerning the results of any test, tools lost or damaged in the hole shall be paid for at cost by the party for whom the test is made.

Trainee [Signature]