

GRAND MESA OPERATING COMPANY

(316) 265-3000
FAX: (316) 265-3455

1700 N. WATERFRONT PARKWAY
BLDG. 600
WICHITA, KANSAS 67206-5514

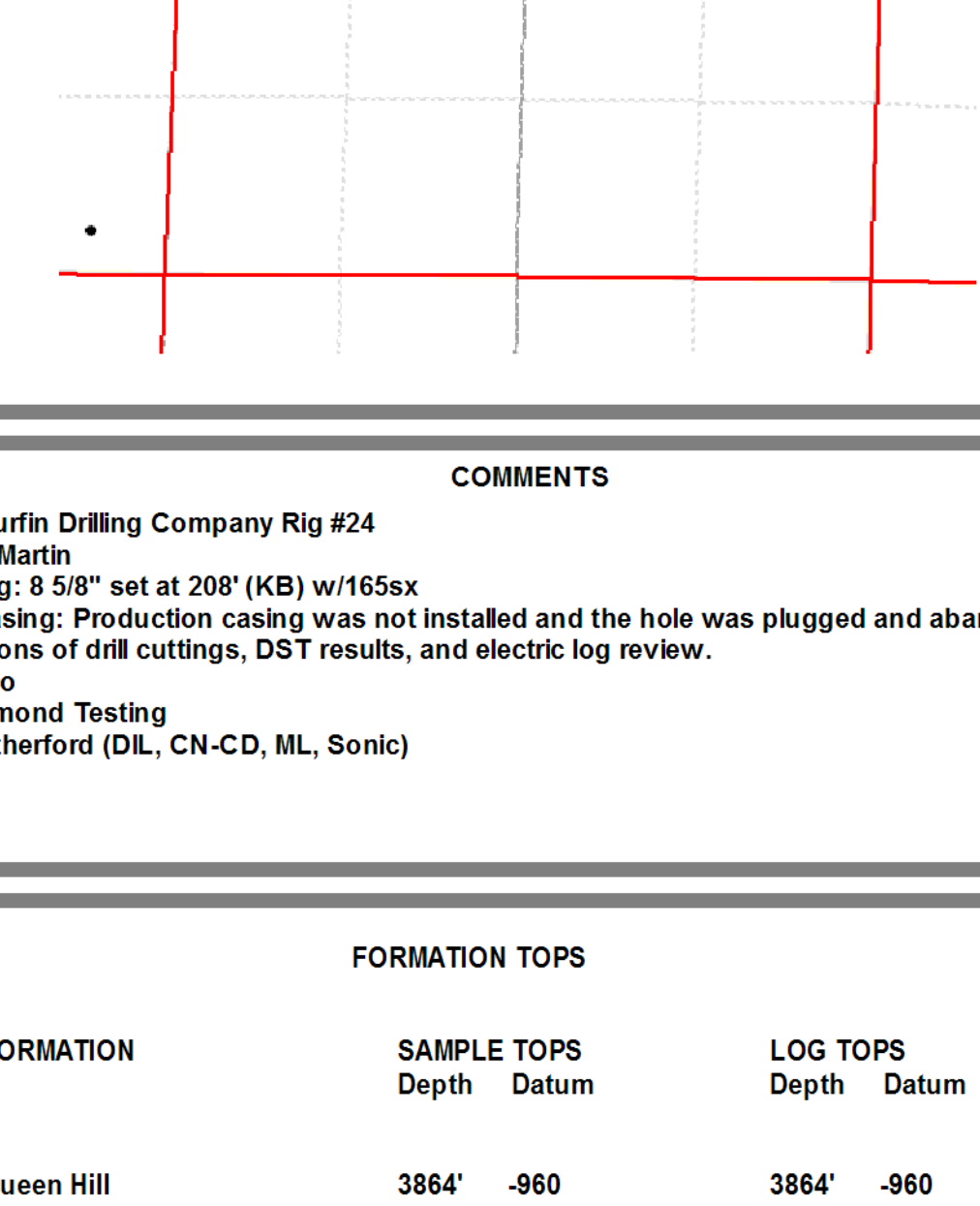
Scale 1:240 (5"=100') Imperial
Measured Depth Log

Well Name: Beazley-Chambers #1-13
Location: 1972' FNL, 2387' FWL, 13-13S-31W, Gove County, Kansas
License Number: API: 15-063-22004
Spud Date: 07/01/2012
Surface Coordinates: Lat: 38.9263236 Long: -100.7145514
Bottom Hole: Vertical hole
Coordinates:
Ground Elevation (ft): 2899' **K.B. Elevation (ft):** 2904'
Logged Interval (ft): 3800' **To:** RTD **Total Depth (ft):** 4663'
Formation: Mississippian at RTD
Type of Drilling Fluid: Chemical

Printed by MUD.LOG from WellSight Systems 1-800-447-1534 www.WellSight.com

GEOLOGIST

Name: Kent R. Matson
Company: Matson Geological Services, LLC
Address: 33300 W. 15th Street S.
 Garden Plain, Kansas 67050
 316-644-1975

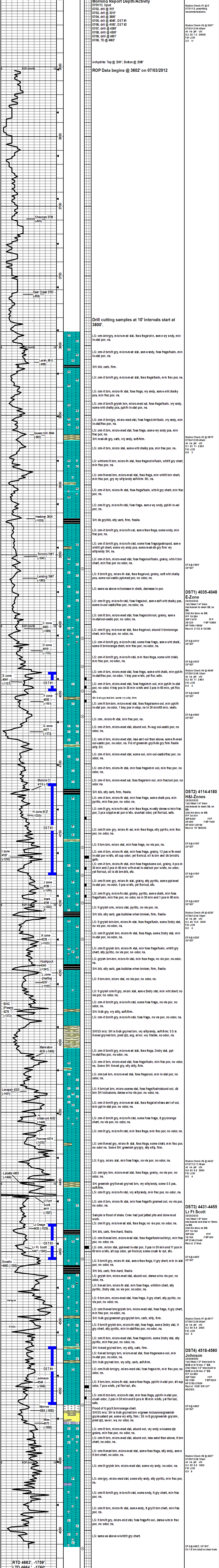


COMMENTS

Contractor: Murfin Drilling Company Rig #24
Pusher: Tony Martin
Surface Casing: 8 5/8" set at 208' (KB) w/165x
Production Casing: production casing was not installed and the hole was plugged and abandoned, based on field observations of drill cuttings, DST results, and electric log review.
Mud by: MudCo
DST's by: Diamond DTL
Logs by: Weatherford (DIL, CN-CD, ML, Sonic)
RTD = 4663'
LTD = 4664'

FORMATION TOPS

FORMATION	SAMPLE TOPS		LOG TOPS	
	Depth	Datum	Depth	Datum
Queen Hill	3864'	-960	3864'	-960
Heebner Shale	3924'	-1020	3824'	-1020
Toronto	3951'	-1047	3951'	-1047
Lansing	3967'	-1063	3966'	-1062
Muncie Creek Shale	4119'	-1215	4119'	-1215
Stark Shale	4206'	-1302	4208'	-1304
Hushpuckney Shale	4245'	-1341	4246'	-1342
Marmaton	4310'	-1406	4310'	-1406
Upper Fort Scott	4411'	-1507	4411'	-1507
Little Osage Shale	4433'	-1529	4434'	-1530
Excello Shale	4460'	-1556	4462'	-1558
Johnson Zone	4544'	-1640	4544'	-1640
Morrow	4564'	-1660	4562'	-1658
Mississippian	4574'	-1670	4577'	-1673
RTD	4663'	-1759		
LTD			4664'	-1760



RTD 4663', -1759'
LTD 4664', -1760'