

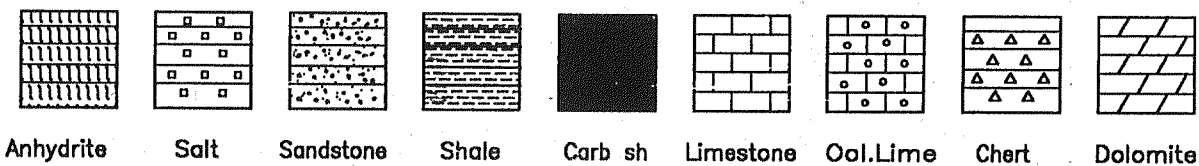
JERRY A. SMITH

CERTIFIED PETROLEUM GEOLOGIST

GEOLOGIST'S REPORT DRILLING TIME and SAMPLE LOG

COMPANY: MCCOY PETROLEUM CORPORATION		ELEVATIONS	
LEASE: SCHMIDT 'A' #7-29		K.B. 2856	
FIELD: LETTE SE		D.F.	
LOCATION: 1140' FSL & 1980' FWL		G.L. 2843	
SEC. 29	TWSP. 30	RNG. 31W	Measurements Are All From:
COUNTY: HASKELL	STATE: KANSAS		KB
CONTRACTOR: STERLING DRLG. RIG #5		CASING	
SPUD: 6/16/12	COMP. 6/24/12	SURFACE: 8 5/8" @ 1822'	
RTD. 4805	LTD. 4806	PRODUCTION: 4 1/2" @ 4802'	
MUD UP: 3500	TYPE MUD: CHEMICAL		ELECTRICAL SURVEYS
API No. 15-081-21987		WEATHERFORD: MNL, MFE, MCG, MPD/MDN	
SAMPLES SAVED FROM: 4000		TO: RTD	
DRILLING TIME KEPT FROM: 4000		TO: RTD	
SAMPLES EXAMINED FROM: 4000		TO: RTD	
GEOLOGICAL SUPERVISION FROM: 3850		TO: RTD	
GEOLOGIST ON WELL: JERRY A. SMITH			
FORMATION TOPS	LOG	SAMPLES	
HEEBNER	4176 (-1320)	4176 (-1320)	
LANSING	4244 (-1388)	4244 (-1388)	
"G" ZONE	4533 (-1677)	4533 (-1677)	
STARK Ø	4671 (-1815)	4672 (-1816)	
SWOPE	4680 (-1824)	4680 (-1824)	
HUSHPUCKNEY	4747 (-1891)	4750 (-1894)	
HERTHA Ø	4766 (-1910)	4765 (-1909)	

LEGEND

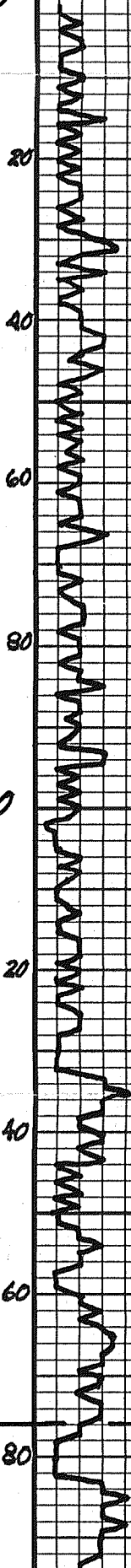


LITHOLOGY	DEPTH	DRILLING TIME IN MINUTES PER FOOT Rate of Penetration Increases	SAMPLE DESCRIPTIONS	REMARKS
				GAS DETECTOR BY STERLING DRLG. TOOKE DAQ No DST's MUD BY MUD-CO

S.H.T.'s
1827' 1°
4805' 3/4°

VERT. LOG SCALE: 5" = 100'

4000



Lm - Gray, Lt. GY, FX.
No. V.S. D.
No. V.S. D.

Lm - AA.

Lm - Lt. GY, TN, FX.
D.S. - SCAT. V.G.Y. D.

Lm - AA. V. CHKY.

Lm - Lt. - M GY, GY -
FX. SCAT. PR
V.G.Y. D. N.S.

Lm - AA.

Lm - Lt. - M GY - TN.
FX. SCAT. PR V.G.Y. D.
N.S. CHKY.

Lm - AA.

Lm - AA.

Lm - Lt. - M GY, FX.
D.S. - PR V.G.Y. D.
N.S.

Lm - AA.

Lm - AA.

Lm - AA.

Lm - Gray, Lt. GY, FX.
CHKY. No. V.S. D.

SH - DK GY, GY - GN, BUK.

SH - BUK, CARB.

Lm - Gray, Lt. GY, FX.
CHKY. No. V.S. D.
SCAT. DK SH.

Lm - AA.

SH - BUK, CARB.

Lm - M GY - TN, FX, D.S.

SH - DK GY, GY - GN.

HEEBNER
4176 (-1320) SMPL & LOG

4200

20

40

60

80

4300

20

40

60

80

4400

LN - CRM, Lp Gy, Fx.
DSE

LN - M - DK Gy - GN
DSE, CMT, SCAT
LN - DK Gy - GN

SH - DK Gy, Gy - GN

SCAT LN & SH - AA

SH - M - DK Gy, Gy - GN

LANSING
4244 (-1388) SMPL & LOG

LN - CRM, Lp Gy, Fx.
DSE, CMT, SCAT
LN - No Vis S.

SH - M - DK Gy, Gy - GN

LN - CRM, Lp Gy, Fx.
DSE - CMT

SH - DK Gy

LN - CRM, Lp Gy, Fx.
DSE, SCAT, PR, VGY
DSE, SH, DSE CMT

LN - Lp Gy, Fx, DSE
LN - No Vis S.

LN - AA - No Vis S.

LN - Lp Gy, Fx, DSE
LN - SH -

LN - CRM, Lp Gy, Lp GN
DSE, CMT, SCAT
PR VGY S. No.

LN - AA - NS

LN - CRM, Lp GN, Fx, NS
DSE, PR VGY S. NS
CMT

SH - M - DK Gy

LN - Lp - M Gy, Fx.
DSE, CMT, SCAT
LN - M Gy, DSE, SH, DSE CMT

LN & CMT - AA

LN & CMT - AA

LN - CRM, Lp Gy, Lp GN
DSE, CMT, No Vis S.

LN - AA

LN - CRM, Lp Gy, Fx.
DSE, No Vis S.



20
40
60
80
4500
20
40
60
80
4600
20

50 UGK @ 4508
33 UNIT REPEAT
33 UGK @ 4531
45 UGK @ 4558
50 UGK @ 4622

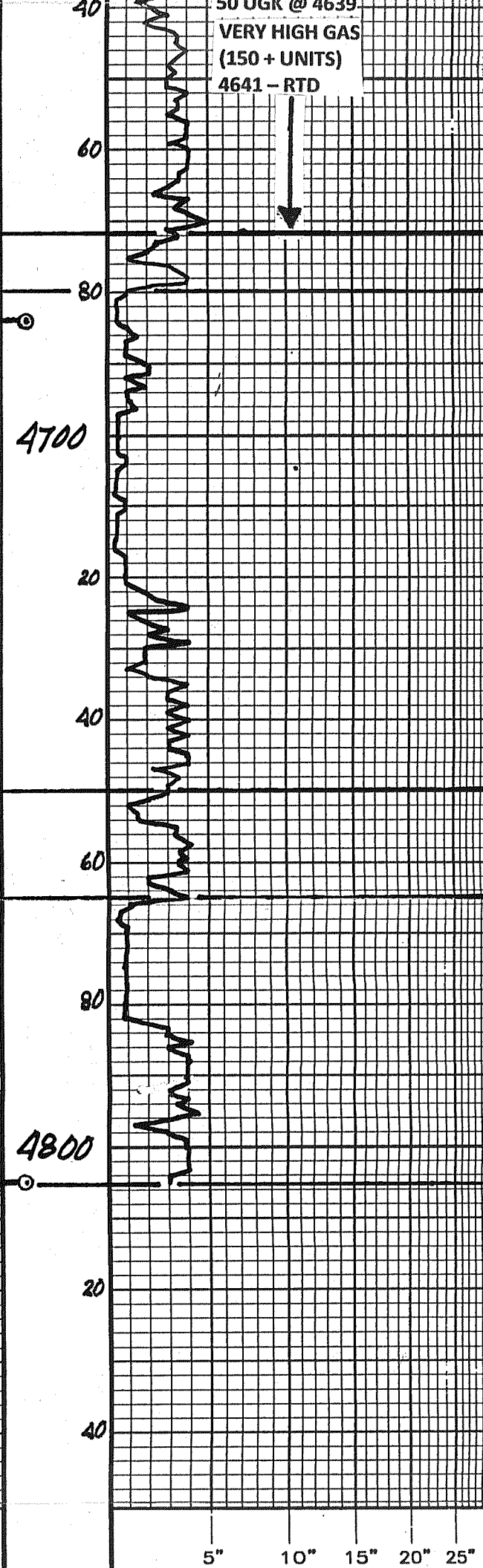
SH - DK GY.
Lm - Cam. GY. to Top. FX. SPS. Foss. DSE. CNGK. In Pt.
Lm - AA.
Lm - GRM. GY. to 4500 M GY. DSE. SPS. Foss. No Vis. D. NS. Wm. Jct. CNGK.
Lm - AA. SPS. COARSE. SCAT. PR. COMB. GY. V. CNGK. NS.
Lm - AA. CNGK. NS.
Lm - AA. CNGK. NS.
Lm - M - DK GY. FX. DSE. SCAT. W. CNGK. SCAT. DK GY. IN.
P. ROOM. DK GY. BRITTY. IN. SCAT. M GY. FX. DSE. IN.
SH - BLK. CARB.
Lm - M - DK GY. FX. DSE. CNGK. to 4531. SH. M. to DK GY. GY. CNGK. CNGK.
SH - DK GY. BRITTY.
Lm - DK GY. DK GY. to 4531. DSE. No Vis. D. NS. V. SH. Y.
Lm - Cam. GY. to M GY. DSE. to 4531. CNGK. to GY. OPA. SH. DSE. CNGK.
Lm - AA.
Lm - Cam. CNGK. to GY. IN. FX. V. SPS. V. GY. D. NS.
Lm - Cam. CNGK. to 4531. M GY. to 4531. DSE. SCAT. M GY. OPA. SH. DSE. CNGK.
Lm - SCAT. CNGK. - AA.
Lm - GRM. SUB. CNGK. to 4531. CNGK. to 4531. M GY. to 4531. DSE. GY. to 4531. FX. DSE. No Vis. D. W. IN. CNGK. - AA.
Lm - GY. to M GY. FX. DSE. W. GY. to 4531. M - DK GY. FX. COARSE. DSE. IN. CNGK. - AA.
Lm - GRM. M GY. GY. - IN. FX. DSE.
Lm - AA. BECOMING SUB. CNGK. IN PT.
Lm - GY. to M GY. FX. SPS. Foss. DSE. SCAT. W. CNGK.

MUD @ 4483:
9.3 WT, 43 VIS, 10.0 FILT,
2000 CHLOR, 2# LCM

'G' ZONE
4533 ((-1677) SMPL & LOG

SHORT TRIP @ 4641

LITH



50 UGR @ 4639
 VERY HIGH GAS
 (150+ UNITS)
 4641 - RTD

LM - GRAY, L. GRAY, SUB-
 GRAY, L. GRAY, M. GRAY
 GRAY, L. GRAY, D. GRAY
 GRAY, L. GRAY, D. GRAY
 GRAY, L. GRAY, D. GRAY

LM - L. GRAY, L. GRAY - AA.

LM - AA w/ TR. CNT -
 AA.

SH - BLK, LARB. RARE,
 W/ FLEETING ODR.
 No live SHO'S.

LM - L. GRAY, GRAY w/ GR
 GRAY, GRAY, GRAY
 ODR. GRAY GRAY, GRAY.

LM - L. GRAY - M. GRAY, GRAY, GRAY
 GRAY, GRAY, GRAY, GRAY
 GRAY, GRAY, GRAY, GRAY
 GRAY, GRAY, GRAY, GRAY
 GRAY, GRAY, GRAY, GRAY

LM - M. GRAY, GRAY, GRAY
 GRAY, GRAY, GRAY, GRAY
 GRAY, GRAY, GRAY, GRAY
 GRAY, GRAY, GRAY, GRAY

LM - M. GRAY, GRAY, GRAY
 GRAY, GRAY, GRAY, GRAY
 GRAY, GRAY, GRAY, GRAY
 GRAY, GRAY, GRAY, GRAY

LM - M - DK GR. GRAY, GRAY
 GRAY, GRAY, GRAY, GRAY
 GRAY, GRAY, GRAY, GRAY
 GRAY, GRAY, GRAY, GRAY

LM - AA. D. GRAY, GRAY
 GRAY.

LM - AA.

LM - M - DK GR. GRAY, GRAY, GRAY
 GRAY, GRAY, GRAY, GRAY
 GRAY, GRAY, GRAY, GRAY

SH - BLK, LARB.

LM - L. GRAY, GRAY, GRAY, GRAY
 GRAY, GRAY, GRAY, GRAY
 GRAY, GRAY, GRAY, GRAY

LM - M. GRAY, GRAY, GRAY, GRAY
 GRAY, GRAY, GRAY, GRAY
 GRAY, GRAY, GRAY, GRAY
 GRAY, GRAY, GRAY, GRAY

LM - AA. GRAY, GRAY, GRAY
 GRAY, GRAY, GRAY, GRAY
 GRAY, GRAY, GRAY, GRAY

LM - L. GRAY - M. GRAY, GRAY, GRAY
 GRAY, GRAY, GRAY, GRAY
 GRAY, GRAY, GRAY, GRAY
 GRAY, GRAY, GRAY, GRAY

LM & SH - AA.

SHORT TRIP @ 4641
 PIPE STUCK/ADD OIL TO MUD
 DOWN 16 HRS.

MUD @ 4641:
 8.95 WT, 52 VIS, 8.0 FILT,
 2100 CHLOR, 2# LCM

STARK
 4672 (-1816) SMPL
 4671 (-1815) LOG

SWOPE Ø
 4680 (-1824) SMPL & LOG

HUSHPUCKNEY
 4750 (-1894) SMPL
 4747 (-1891) LOG

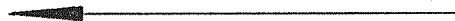
HERTHA Ø
 4765 (-1909) SMPL
 4766 (-1910) LOG

TOTAL DEPTH
 4805 (-1949) ROTARY
 4806 (-1950) LOG

GEOLOGY

DEPTH

DRILLING TIME MINUTES/FOOT



Rate of Penetration Increases

SAMPLE DESCRIPTIONS

REMARKS

COMPANY: MCCOY PETROLEUM CORPORATION

ELEVATION: 2856 KB

LEASE: SCHMIDT 'A' #7-29

LOCATION: 1140' FSL & 1980' FWL

SEC 29

TWP 30

RGE 31W

COUNTY: HASKELL

STATE: KANSAS