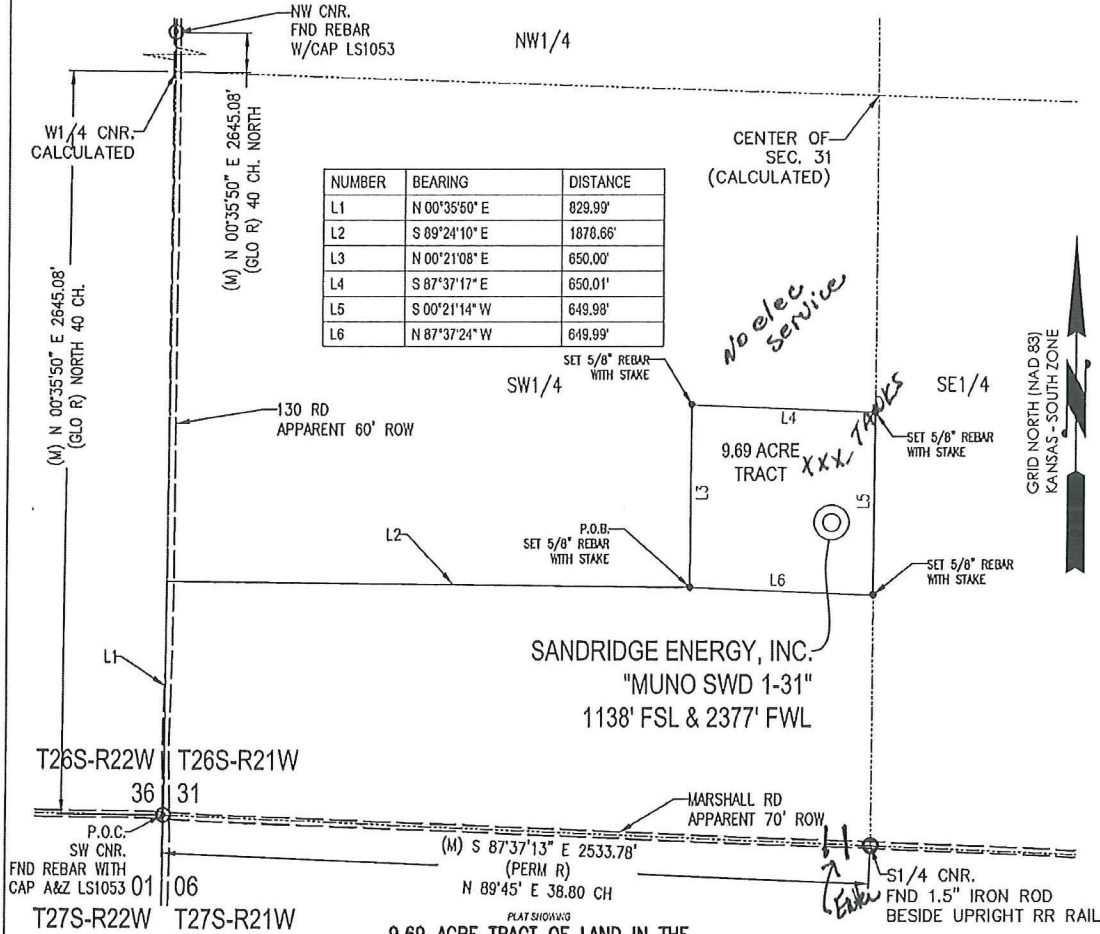


T 26 S - R 21 W



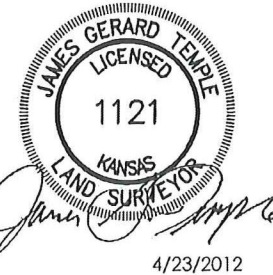
SANDRIDGE ENERGY, INC.  
 "MUNO SWD 1-31"  
 1138' FSL & 2377' FWL

9.69 ACRE TRACT OF LAND IN THE SW 1/4 OF SECTION 31, T26S-R21W, FORD COUNTY, KANSAS

**METES AND BOUNDS DESCRIPTION (9.69 ACRE TRACT)**

PART OF THE SW 1/4 OF SECTION 31, TOWNSHIP 26 SOUTH, RANGE 21 WEST, FORD COUNTY, KANSAS, MORE PARTICULARLY DESCRIBED AS FOLLOWS:

COMMENCING AT A FOUND REBAR WITH CAP MARKED "A & Z LS1053" AT THE SW CORNER OF SAID SECTION 31;  
 THENCE N 00°35'50" E ALONG THE WEST LINE OF SAID SECTION 31, A DISTANCE OF 829.99 FEET TO A POINT;  
 THENCE S 89°24'10" E, A DISTANCE OF 1878.66 FEET TO A SET 5/8" REBAR WITH CAP MARKED "LS1121," SAID POINT BEING THE POINT OF BEGINNING;  
 THENCE N 00°21'08" E, A DISTANCE OF 650.00 FEET TO A SET 5/8" REBAR WITH CAP MARKED "LS1121;"  
 THENCE S 87°37'17" E, A DISTANCE OF 650.01 FEET TO A SET 5/8" REBAR WITH CAP MARKED "LS1121;"  
 THENCE S 00°21'14" W, A DISTANCE OF 649.98 FEET TO A SET 5/8" REBAR WITH CAP MARKED "LS1121;"  
 THENCE N 87°37'24" W, A DISTANCE OF 649.99 FEET TO THE POINT OF BEGINNING.

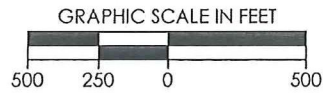


SAID TRACT CONTAINING 9.69 ACRES MORE OR LESS OF LAND AS SURVEYED.

**BASIS OF BEARINGS:**  
 KANSAS COORDINATE SYSTEM 1983 SOUTH ZONE  
 BEARINGS: GRID  
 DISTANCES: US SURVEY FOOT AT GRID  
 COORDINATES: US SURVEY FOOT AT GRID

**SURVEYOR'S CERTIFICATE:**  
 I, JAMES GERARD TEMPLE, KANSAS LICENSED PROFESSIONAL LAND SURVEYOR, NO. 1121, DO HEREBY CERTIFY THAT THIS PLAT REPRESENTS THE RESULTS OF A SURVEY MADE ON THE GROUND UNDER MY SUPERVISION ON THE DATE OF 04-23-2012.

(GLO R)- GENERAL LAND OFFICE RECORD  
 (PERM R)- PERMANENT SURVEY RECORD  
 (M)- MEASURED DATA



REVISION	SandRidge		
△ MOVED WELL (04-23-2012)	"MUNO SWD 1-31" PART OF THE SW 1/4 OF SECTION 31, T-26-S, R-21-W PROPOSED DRILL SITE FORD COUNTY, KANSAS		
	SCALE: 1" = 500'	PLOT DATE: 04-23-2012	DRAWN BY: S. SANDER SHEET NO.: 1 OF 1