



Woolsey Operating Company, LLC

Scale 1:240 (5"=100') Imperial

Measured Depth Log

Well Name: Ricke #4-H
Location: Section - 5 - Township 35 South - Range 11 West
License Number: 15-007-23861-01-00 Region: Barber County, KS
Spud Date: May 17, 2012 Drilling Completed: June 14, 2012
Surface Coordinates: 1055' FNL and 360' FWL
Approx. SE SW NW NW
Bottom Hole
Coordinates:
Ground Elevation (ft): 1375' K.B. Elevation (ft): 1392'
Logged Interval (ft): 3400' To: 5071' Total Depth (ft): 5071'
Formation: Kansas City -----> Mississippian
Type of Drilling Fluid: Water/Chemical Mud
Printed by WellSight Log Viewer from WellSight Systems 1-800-447-1534 www.WellSight.com

OPERATOR

Company: Woolsey Operating Company, LLC
Address: 125 N. Market, Suite 1000
Wichita, KS 67202

GEOLOGIST

Name: Billy G. Klaver
Company: Woolsey Operating Co. LLC
Address: 125 N. Market, Wichita Kansas, 67202

COMMENTS

Surface Casing: 20" X 53#/ft conductor set at 40' with 4 yards grout.
Ran 13 3/8" X 54.5#/ft to 270' with 240 sx.
Ran 7" X 23#/ft to 5071' with 230 sx.

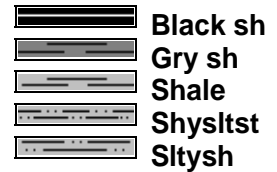
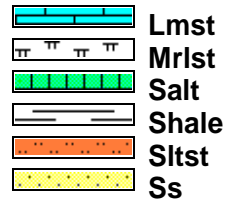
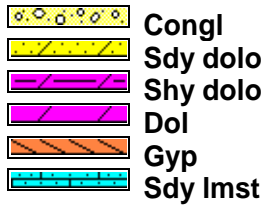
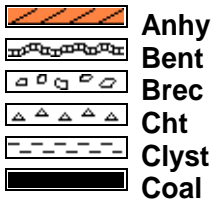
Gas Detector: Woolsey Operating Co. Gas Trailer #2
Mud System: Mud Co. Brad Bortz, Engineer

DSTs

No tests were ran.

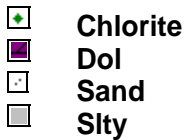
CREWS

ROCK TYPES

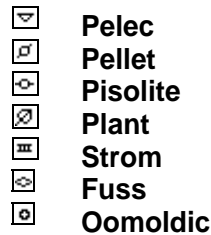
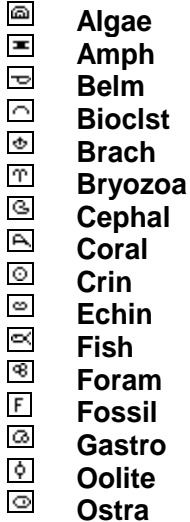


ACCESSORIES

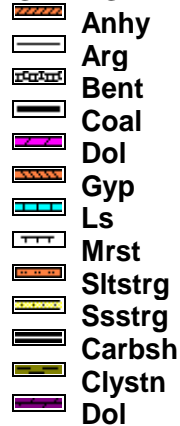
MINERAL



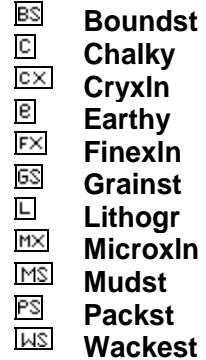
FOSSIL



STRINGER



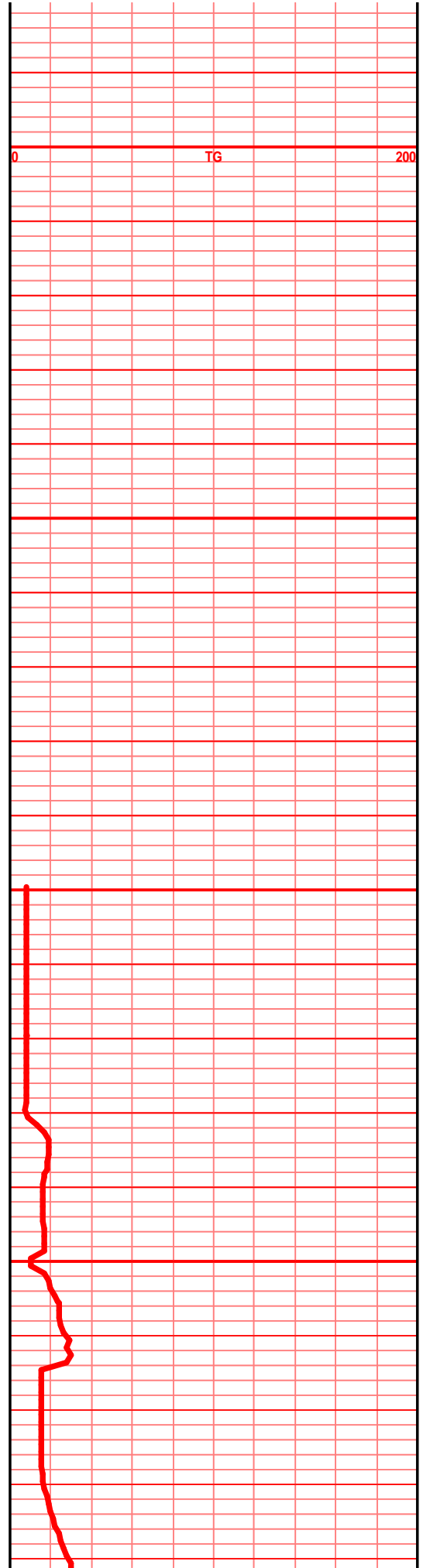
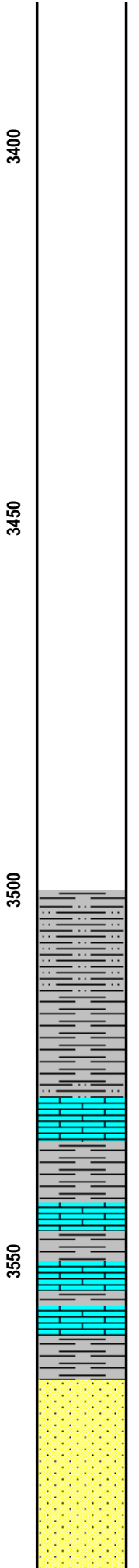
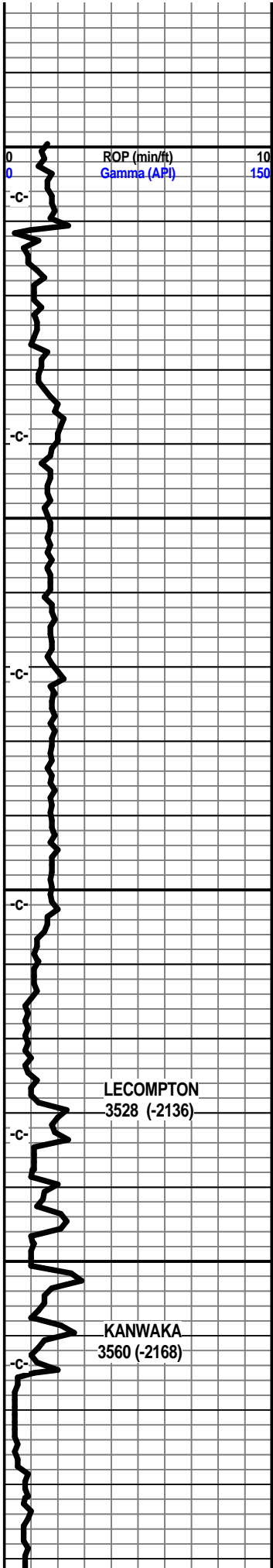
TEXTURE

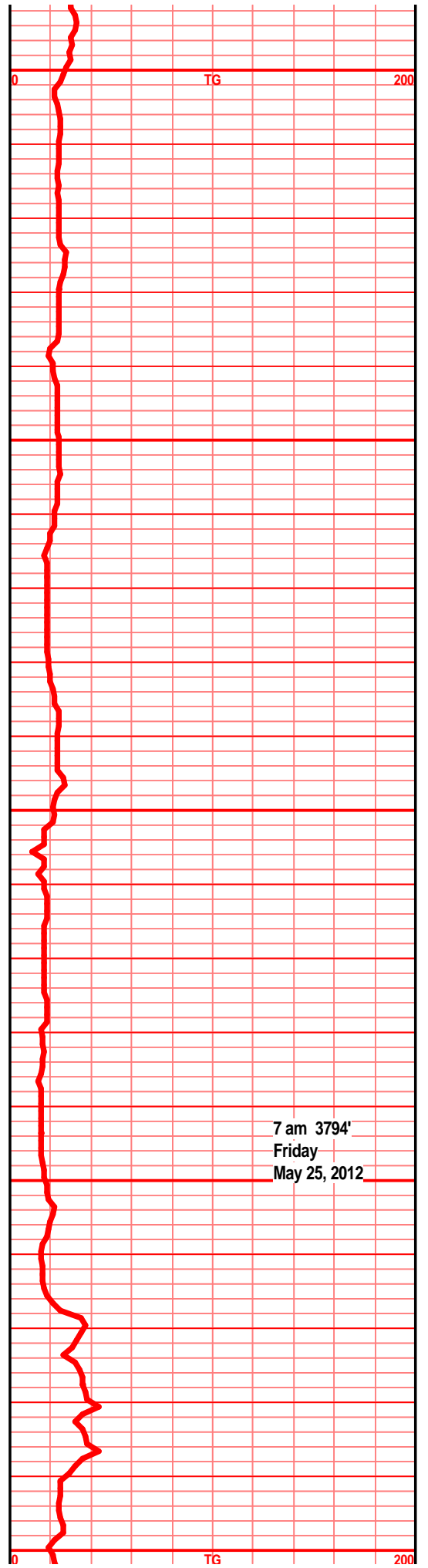
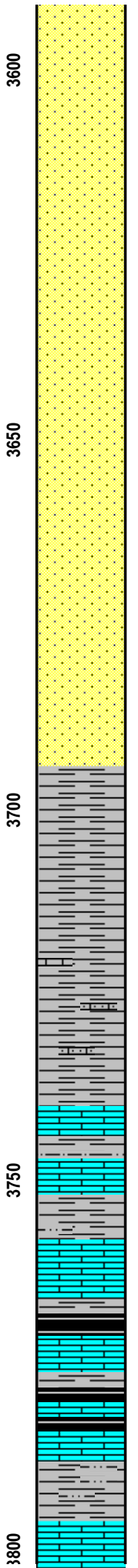
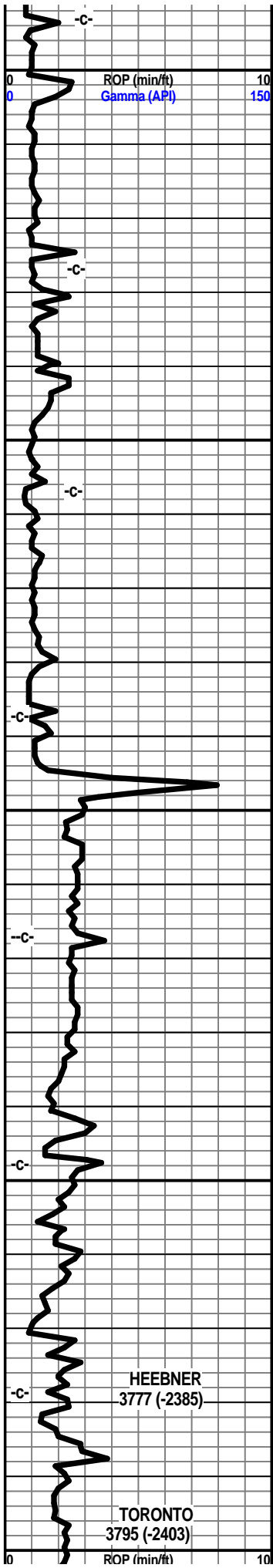


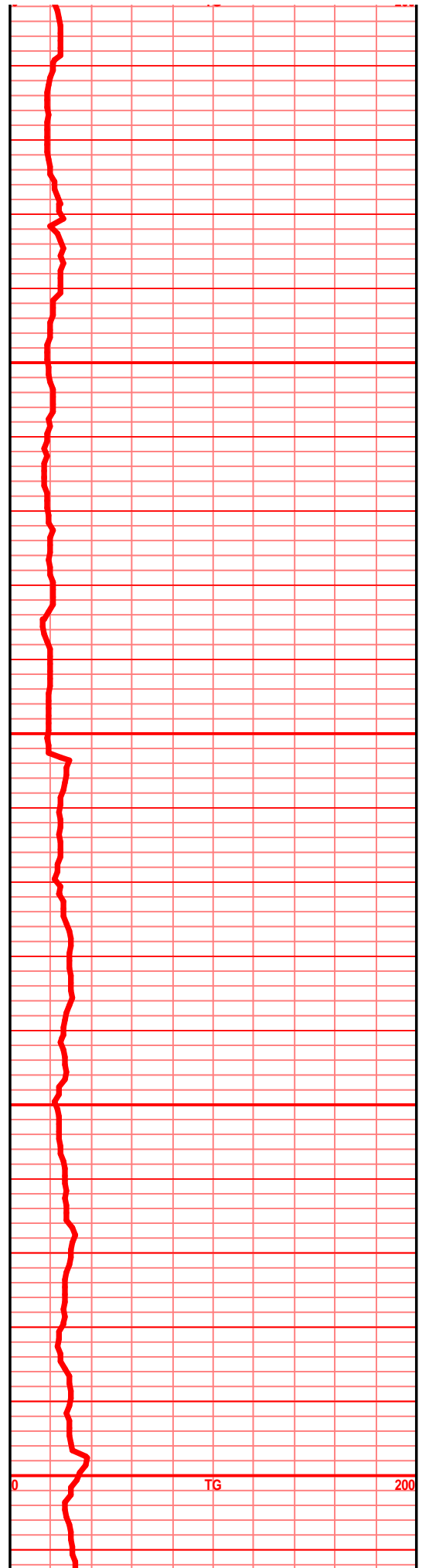
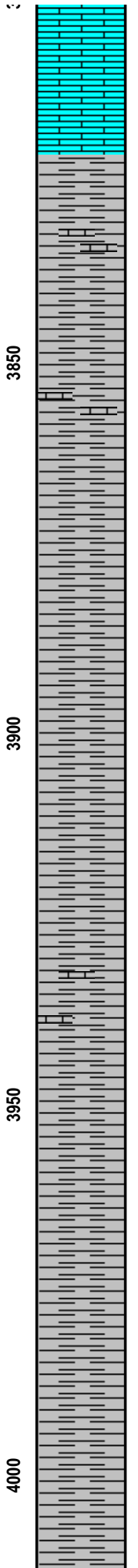
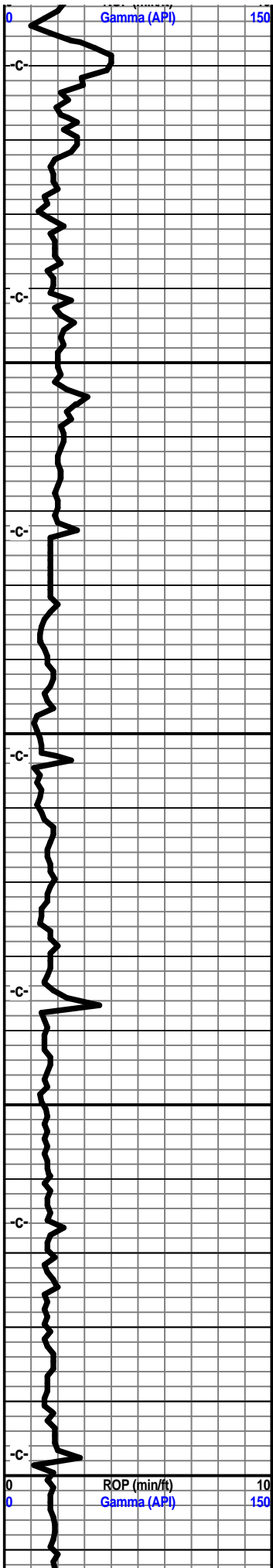
Curve Track 1			Depth	Lithology	Geological Descriptions	TG, C1-C5											
ROP (min/ft)	Gamma (API)					TG (units)	C1 (units)	C2 (units)	C3 (units)	C4 (units)	C5 (units)						
0	ROP (min/ft)	10	32				0	TG	200								
0	Gamma (API)	150															
			3250		<p>Oil Shows</p> <p>7 am Progress.... May 17, 2012 MIRT May 18, 2012 Drilling at 195' May 19, 2012 Drilling at 400' May 20, 2012 Bit trip at 890' May 21, 2012 Drilling at 1270' May 22, 2012 Drilling at 1841' May 23, 2012 Drilling at 2454' May 24, 2012 Drilling at 3107' May 25, 2012 Drilling at 3794' May 26, 2012 Stuck at 4162' May 27, 2012 Stuck at 4162' May 28, 2012 Loose, condition hole May 29, 2012 Drill ahead 7:30 am May 30, 2012 Drilling at 4330' May 31, 2012 Drilling at 4580' June 1, 2012 Drilling at 4655' June 2, 2012 Drilling at 4876' June 3 , 2012 Drilling at 4952' June 4, 2012 Run 7" casing at 5071'</p>												
			3300		<p>Reference wells for structure: Woolsey Operating Co's Ricke #3, W/2 NW, 5-35S-11W, Indian Oil's Boondocker #2, NW SE SE SE, 6-35S-11W.</p>												
			3350		<p>Formation Tops: LeCompton 3528 (-2136) Kanwaka 3560 (-2168) Heebner 3777 (-2385) Brown Lime 4203 (-2811) Kansas City 'I' 4337 (-2945) Stark 4468 (-3076) Hushpuckney 4500 (-3108) Base Kansas City 4549 (-3157) Pawnee 4652 (-3260) Cherokee Group 4880 (-3305) Mississippian 4758 (-3366)</p>												

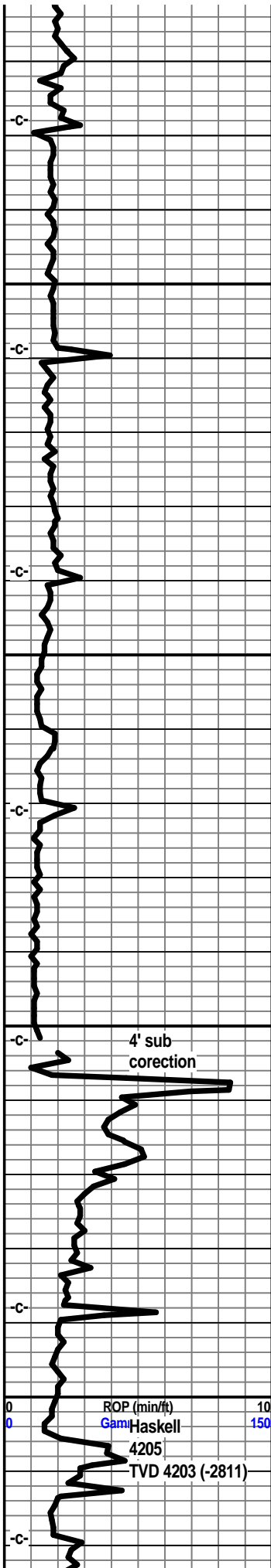
Bill Klaver
Geologist

Oil Shows





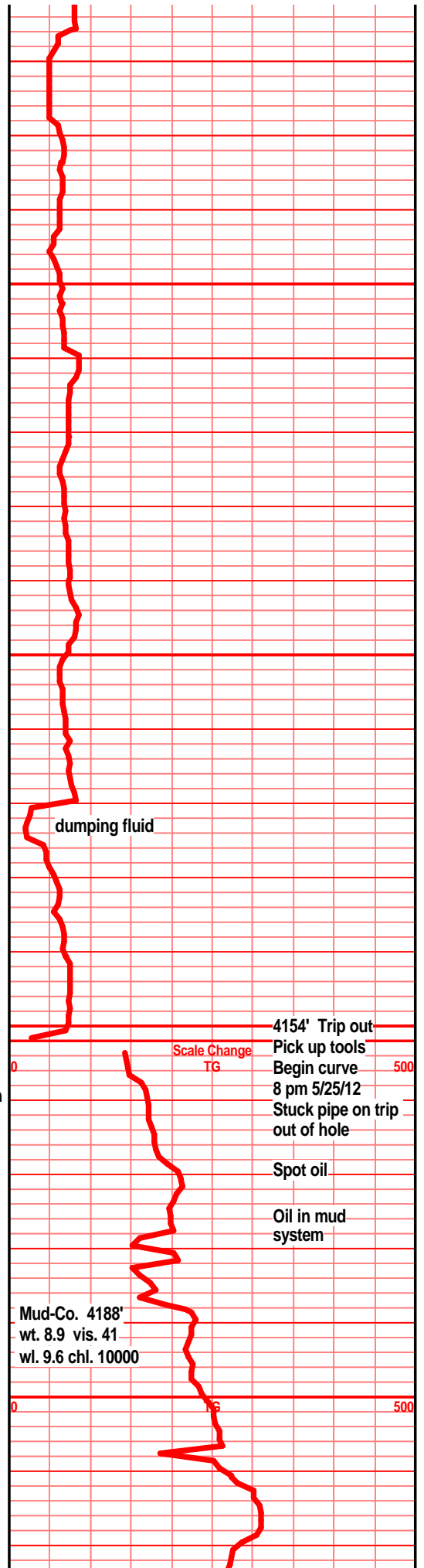


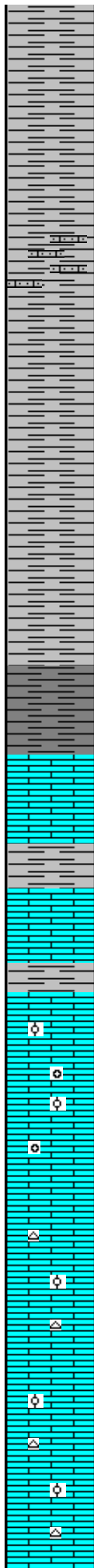
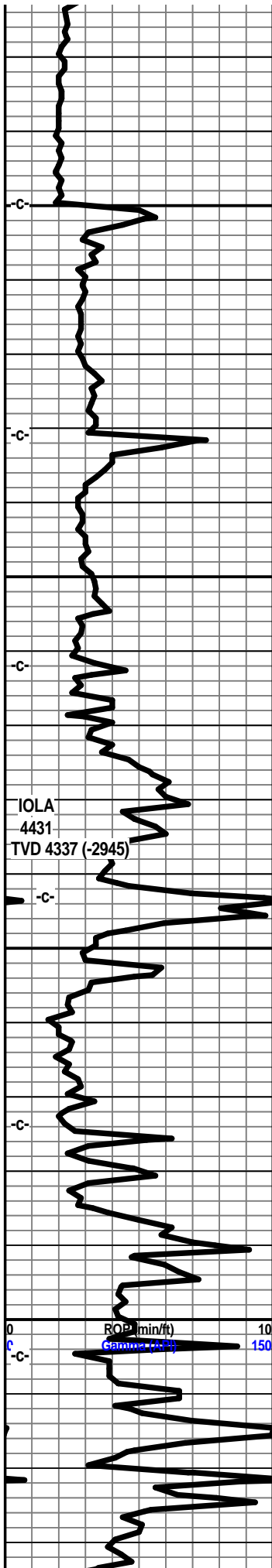


shl gry drk gry, gry drk brn, silty, soft, spls wsh drk gry

shl gry drk gry silty soft

shl drk gry, med gry silty soft, spls wsh med gry, tr gritty gran text





shl gry med drk gry silty, tr gritty soft, gran in prt.

shl gry drk gry silty soft, tr gritty

shl gry drk/med gry silty gritty, tr lst tan crm brn f vfxln blkly dns hrd calc

shl gry drk gry silty soft, tr gritty, spls wsh med gry

shl gry drk gry, silty soft, sticky, spls wsh med gry

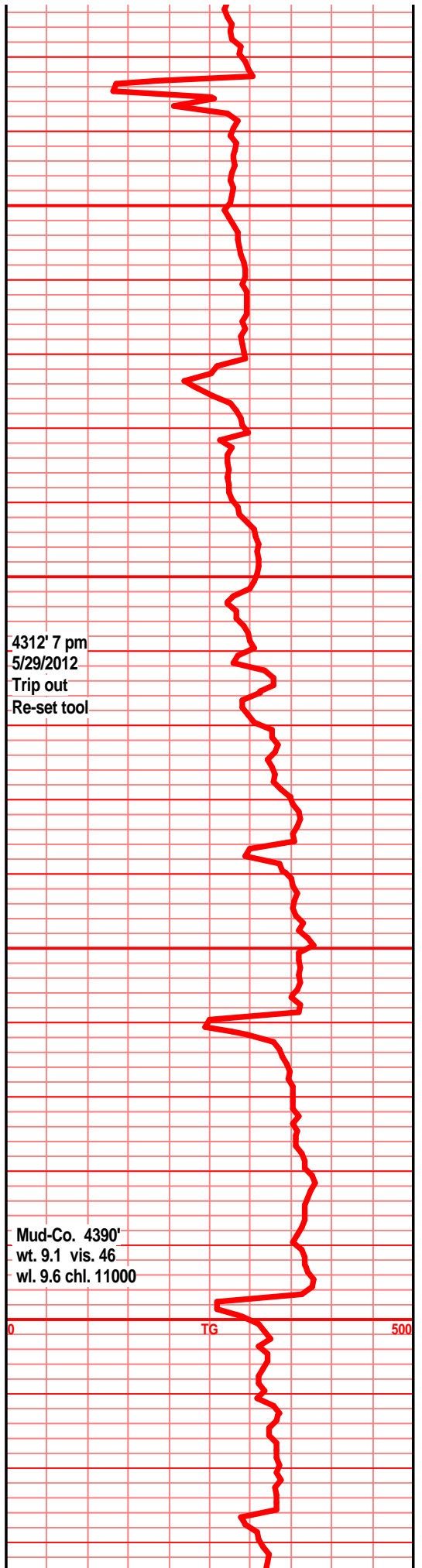
shl gry blk, blk carb in prt, blkly ang pcs, tr gas bubs, lst wht tan crm f sli med xln, sub chlky foss dns

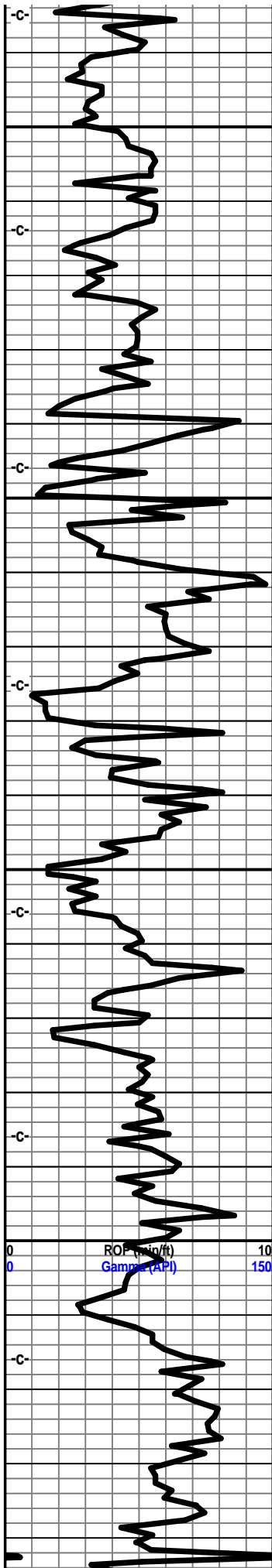
shl gry med gry calc, lst wht tan crm f sli med xln sub chlky foss frags tr foss ool, calc xln fill, soft chlky gran in prt

lst wh off wht tan, f sli med xln, sub chlky, soft chlky gran in prt, tr foss frags, tr foss ool, moldic por, calc xln fill, spls wsh off wht, chrt wht shrp opa

lst crm wht off wht, f sli med xln, sub chlky to chlky, foss frags, foss ool, foss mold por, tr calc xln fill, chrt wht shrp frsh opa, tr foss inclu

lst crm tl gry tan f sli med lxn gran soft, sub chlky to chlky foss frags, calc xln fill, spls wsh wht, chrt wht opa shrp frsh blkly, tr foss inclu





28.2 @ 175.1
44.4

31.6 @ 178.9

4500

35.4 @ 181.3

39.2 @ 180.6

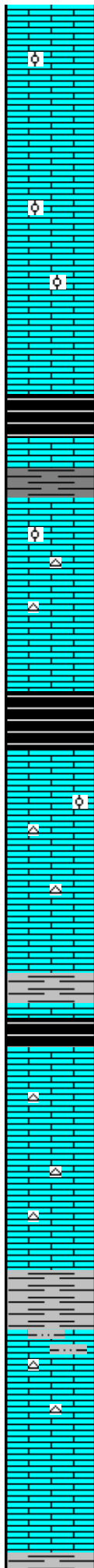
4550

43.3 @ 179.5

47.6 @ 179.0

46.6

51.3 @ 178.3



lst crm tan lt gry f sli med xln gran, sub chlky/chlky foss frags, foss mold por, calc xln fill, chrty, chrt wht shrp frsh foss

lst gry crm tan f xln sli med xln in prt, sub chlky to chlky, foss frags, tr foss ool, foss mold por, chrty in prt, much blk carb shl in 4500' spl

lst tan lt gry crm f vsli med xln gran flky sub chlky/chlky, foss frags, tr chrty, chrt wht off wht shrp frsh foss

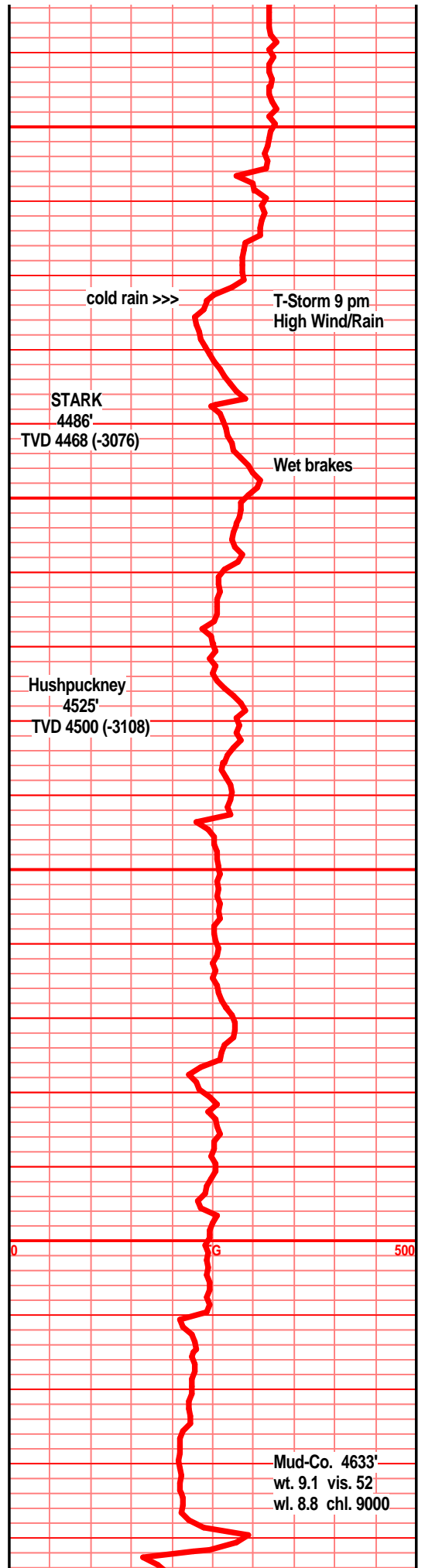
much blk carb shl, lst tan crm lt gry, f xln gran blk sub chlky foss frags, calc xln fill, tr gran, tr chrt aa

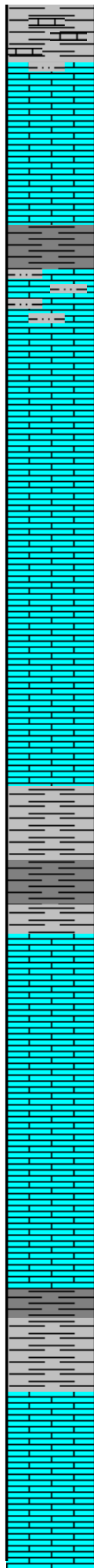
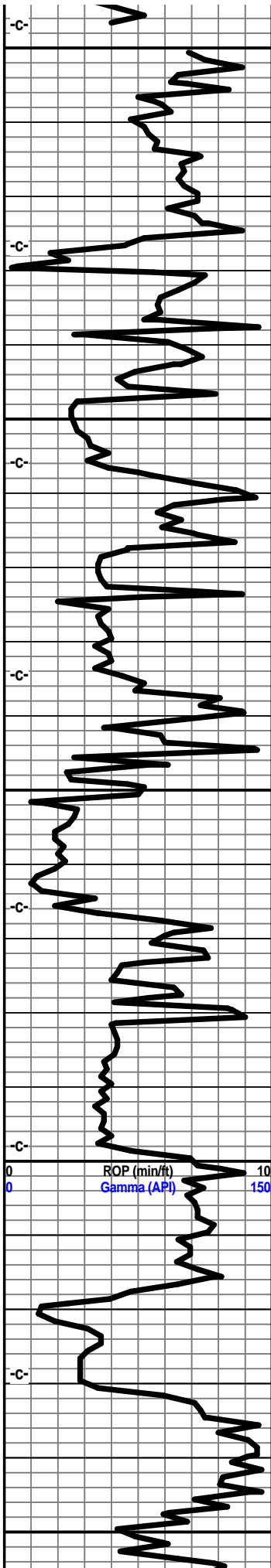
lst lt gry tan f tr sli med xln gran blk ang tr arg, tr sub chlky, foss frags gran, chrt tan off wht shrp frsh

lst lt gry gry off wht f vf xln dns blk ang sub chlky/chlky tr foss frags, calc xln fill, tr chrt off wht lt gry shrp frsh opa

shl gry, gry green brn, silty gritty, calc, lst tan gry brn f vf xln dns hrd silty gritty, chrt tan gry brn shrp frsh foss

lst gry crm tan f vf lxn dns hrd blk ang arg, foss frags, calc xln fill, tr chrt tan gry tr brn shrp frsh foss opa





shl gry green silty gritty pyritic, calc, 1st tan lt gry f vf xln, gran gritty silty, 1st tan brn vf xln dns hrd blk ang dns

shl gry green, silty gritty, 1st buff tan crm f vf xln dns bky ang hrd, sub chky

1st tan crm buff f vf xln dns blk ang hrd, tr sub chky mic foss, shl gry med gry silty gritty calc

1st crm buff tan f vf xln blk ang dns hrd, sub chky in prt, tr micro foss, chrt wht shrp frsh opa

1st crm buff tan off wht in prt, f vf xln blk ang hrd dns, tr sub chky tr micro foss, tr foss micro ool

shl gry, drk gry blk, carb in prt, 1st tan gry buff, f vf xln dns hrd blk tr sub chky, foss frags, calc xln fill, arg in prt

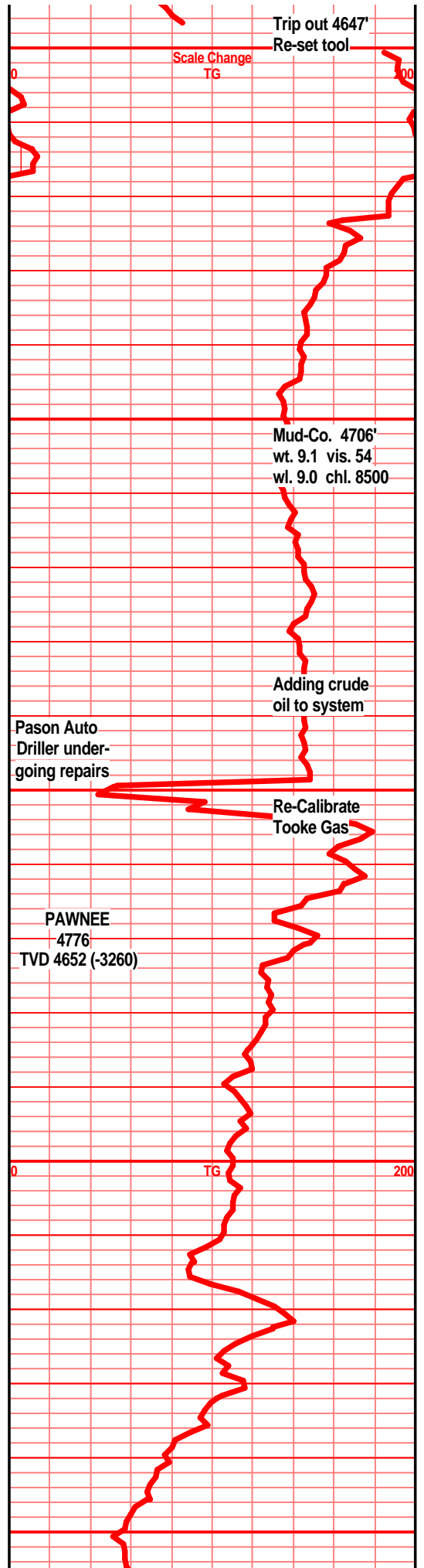
shls, gry med gry tr blk carb 1st crm lt gry tan f vf xln dns blk ang hrd, tr micro foss frags,

1st crm buff tan off wht f vf xln dns hrd blk ang, tr sub chky, micro foss, tr calc xln fill

1st crm buff tan tr lt gry/tan f vf xln gran blk dns ang hrd, tr sub chky, micro foss frags,

sh gry drk gry, tr carb text in prt, 1st crm buff tan, lt gry f vf xln dns hrd blk ang tr sub chky, micro foss, calc xln fill

1st crm tan buff tr lt gry, f vf xln dn shrd blk ang, tr sub chky, tr micro foss frags, shls, gry,



gry med gry silty gritty

shl gry med gry blk, blk carb in prt, blk ang pcs, tr gas bubs, lst tan lt gry buff f vf lxn gran arg silty gritty arg,

lst lt gry buff tan f vf lxn gran arg silty in prt, sub chlky, shls, gry med gry silty gritty pyritic, calc in most

lst dull tan lt gr vf lxn gran arg silty gritty, shl gry lt gry silty gritty,

lst crm buff tan tr lt gry f vf lxn blk ang calc, tr sub chlky soft, shls gry lt gry silty gritty calc

lst off wht gry tan f vf lxn dns hrd blk ang sub chlky tr calc fill, abun shl gry med gry silty gritty calc

shl gry med gry/green, tr yellow, maroon, blue green silty gritty

shl gry me gry green, tr yllw, maroon, silty, gritty, tr sndy in prt, gry-blk, blk splintery shls

shl gry blk, gry green, reddish, maroon, tr yellow maroon mix, silty, gritty, calc in prt, sndy gritty in prt

chrt wht off wht lt gry, tr smokey, shrp, frsh opa, semi opa, semi trans, tr trip edge text, tr frac por, blk hvy stain, tr gas bubs, sli odor, mostly frsh opa barren chrt

chrt wht off wht lt gry tr smokey, frsh shrp tr foss, opa, tr trans, tr weath trip edge, tan brn

4879' 7 am
Saturday
June 2, 2012

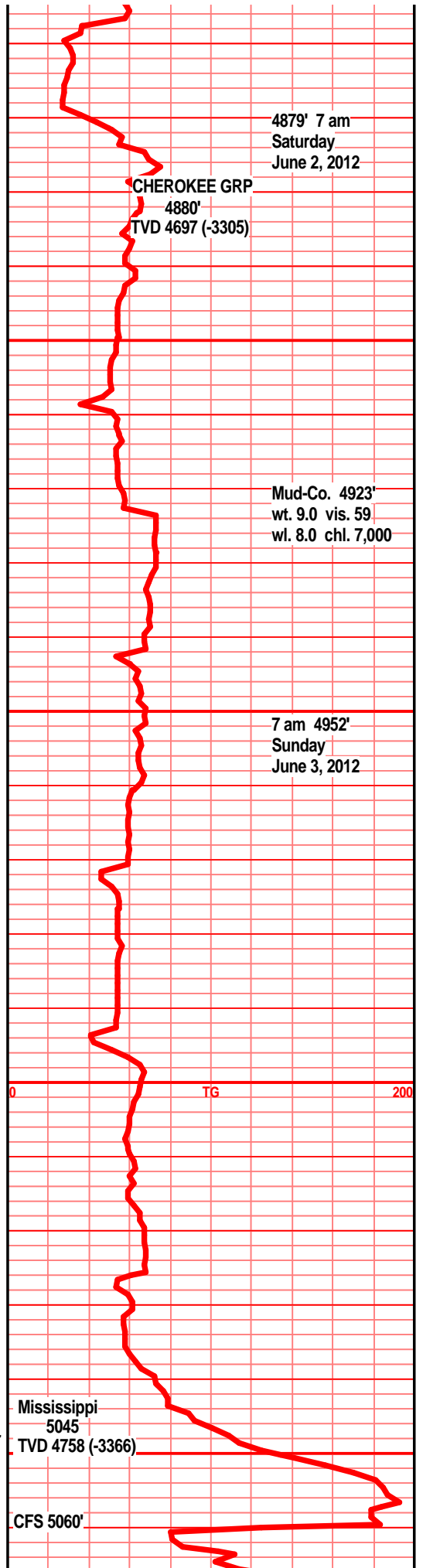
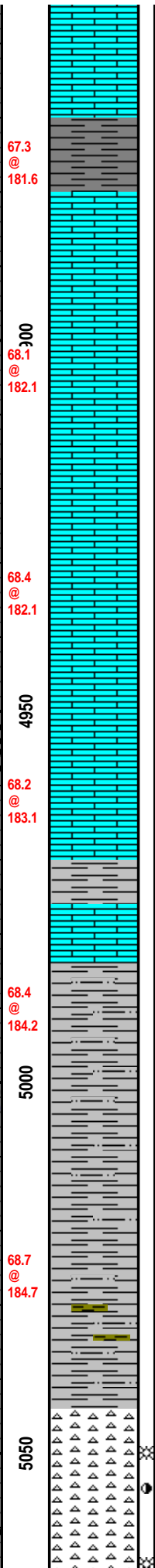
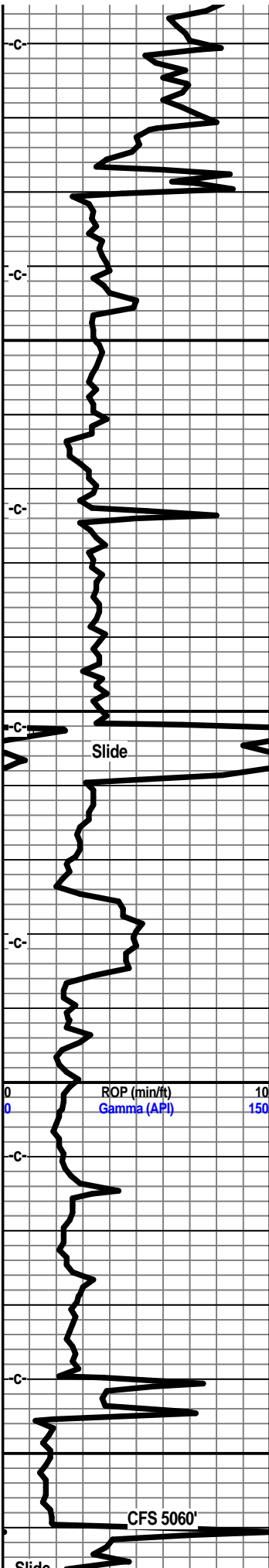
CHEROKEE GRP
4880'
TVD 4697 (-3305)

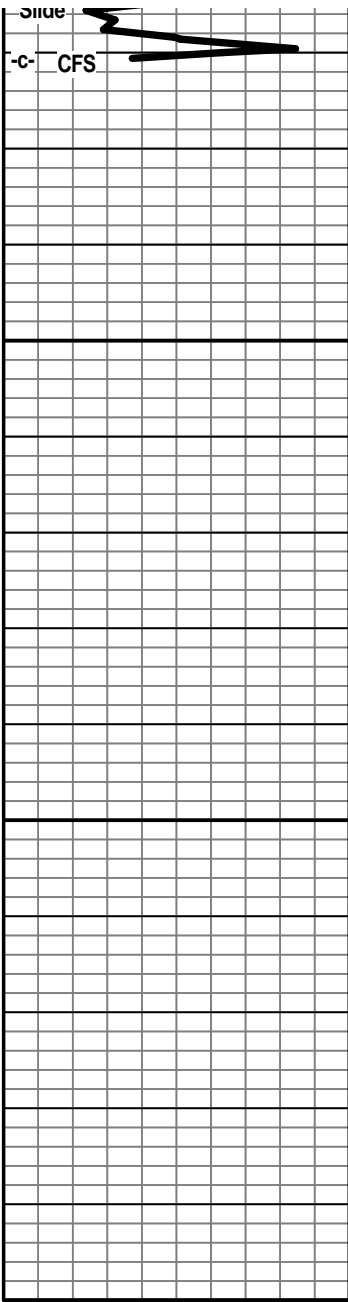
Mud-Co. 4923'
wt. 9.0 vis. 59
wl. 8.0 chl. 7,000

7 am 4952'
Sunday
June 3, 2012

Mississippi
5045
TVD 4758 (-3366)

CFS 5060'





5100

5150

00

△△△
△△△
△△△
△△△
△△△
△△△

stain, hvy blk stain, gas bubs, sli odor, dull UV,
much shrp frsh off wht gry opag chrt

CFS 5071'

MTD 5071'
TVD 4768 (-3376)

Casing point
6 pm Sunday
June 3, 2012

