



TRILOBITE TESTING, INC

DRILL STEM TEST REPORT

Rains & Williamson Oil Co.

36-9s-26w-Graham

220 W. Douglas
Suite 110
Wichita, KS. 67202
ATTN: Scott Alberg

Fore #6-36

Job Ticket: 47830

DST#: 1

Test Start: 2012.07.16 @ 02:40:54

GENERAL INFORMATION:

Formation: **Toronto-A-B**

Deviated: No Whipstock: 0.00 ft (KB)

Time Tool Opened: 08:49:39

Time Test Ended: 13:32:24

Test Type: Conventional Bottom Hole (Initial)

Tester: Jason McLemore

Unit No: 54

Interval: **3830.00 ft (KB) To 3906.00 ft (KB) (TVD)**

Reference Elevations: 2621.00 ft (KB)

Total Depth: 3906.00 ft (KB) (TVD)

2614.00 ft (CF)

Hole Diameter: 7.80 inches Hole Condition: Good

KB to GR/CF: 7.00 ft

Serial #: 8366

Inside

Press@RunDepth: 101.04 psig @ 3896.00 ft (KB)

Capacity: 8000.00 psig

Start Date: 2012.07.16

End Date:

2012.07.16

Last Calib.: 2012.07.16

Start Time: 02:40:54

End Time:

13:32:24

Time On Btm: 2012.07.16 @ 08:49:24

Time Off Btm: 2012.07.16 @ 11:19:24

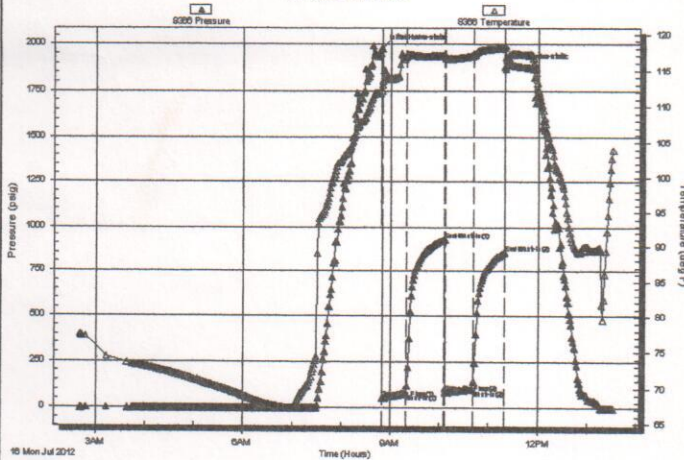
TEST COMMENT: IFP-Weak Blow, Built to 2-3/4"

ISI-Dead

FFP-Weak Blow, Built to 1-1/4"

FSI-Dead

Pressure vs. Time



PRESSURE SUMMARY

Time (Min.)	Pressure (psig)	Temp (deg F)	Annotation
0	1978.07	113.56	Initial Hydro-static
1	51.49	113.05	Open To Flow (1)
30	78.29	117.02	Shut-In(1)
77	922.48	117.06	End Shut-In(1)
78	82.23	116.80	Open To Flow (2)
112	101.04	117.04	Shut-In(2)
150	850.09	118.13	End Shut-In(2)
150	1875.62	118.42	Final Hydro-static

Recovery

Length (ft)	Description	Volume (bbl)
30.00	VSOCMV-1%O-59%W-40%M	0.42
80.00	VSOCM-5%O-95%M	1.12

Gas Rates

	Choke (inches)	Pressure (psig)	Gas Rate (Mcf/d)

Serial #: 8366

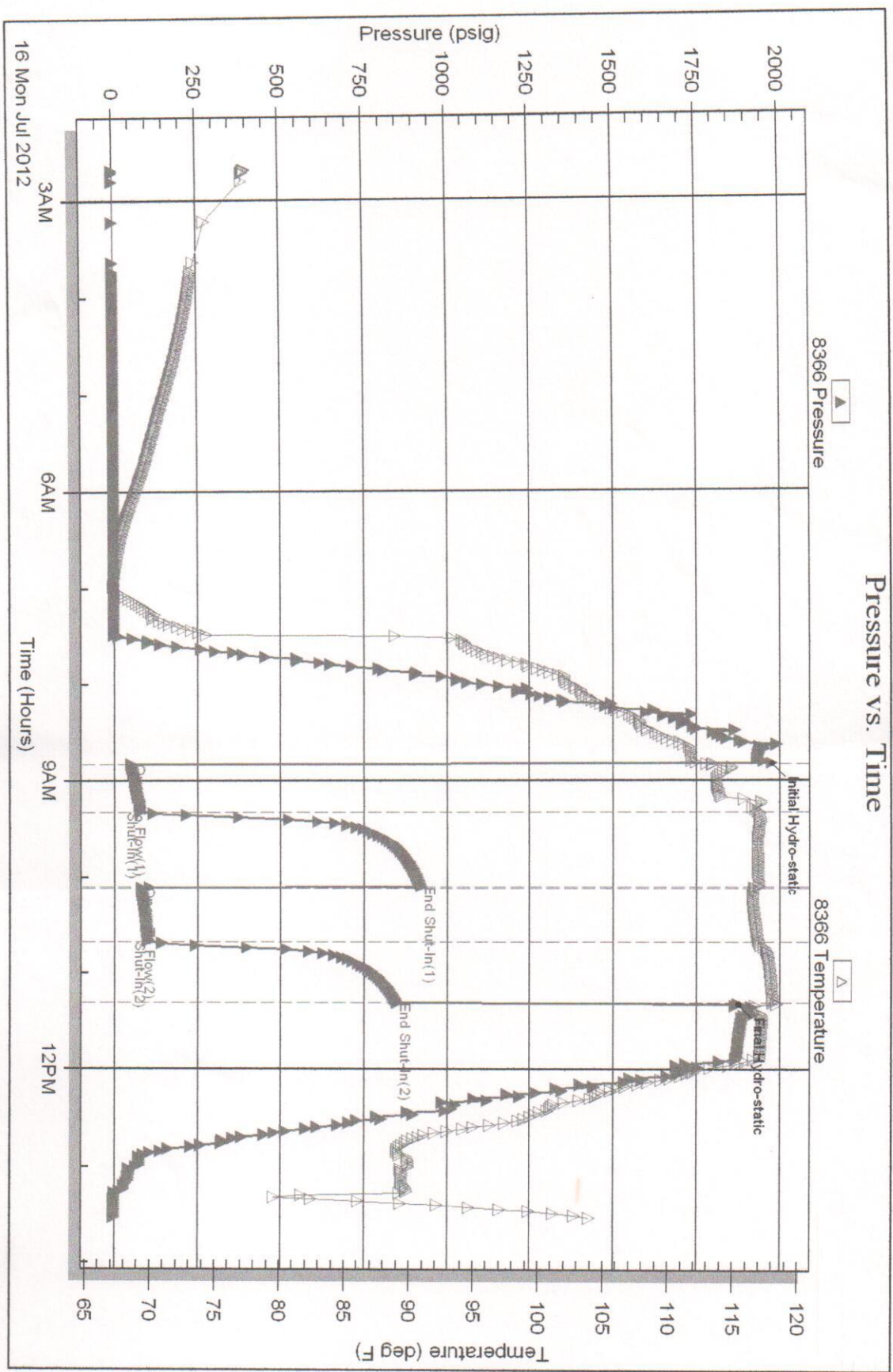
Inside

Rains & Williamson Oil Co.

Fore #6-36

DST Test Number: 1

Pressure vs. Time



Trilobite Testing, Inc

Ref. No: 47830

Printed: 2012.07.16 @ 13:49:30



**TRILOBITE
TESTING, INC**

DRILL STEM TEST REPORT

Rains & Williamson Oil Co.

36-9s-26w-Graham

220 W. Douglas
Suite 110
Wichita, KS. 67202
ATTN: Scott Alberg

Fore #6-36

Job Ticket: 47831

DST#: 2

Test Start: 2012.07.17 @ 03:16:20

GENERAL INFORMATION:

Formation: **H**
 Deviated: **No** Whipstock: **0.00 ft (KB)**
 Time Tool Opened: 08:45:05
 Time Test Ended: 12:08:05

Test Type: **Conventional Bottom Hole (Reset)**
 Tester: **Jason McLemore**
 Unit No: **54**

Interval: **3979.00 ft (KB) To 4014.00 ft (KB) (TVD)**
 Total Depth: **4014.00 ft (KB) (TVD)**
 Hole Diameter: **7.80 inches** Hole Condition: **Good**

Reference Elevations: **2621.00 ft (KB)**
2614.00 ft (CF)
 KB to GR/CF: **7.00 ft**

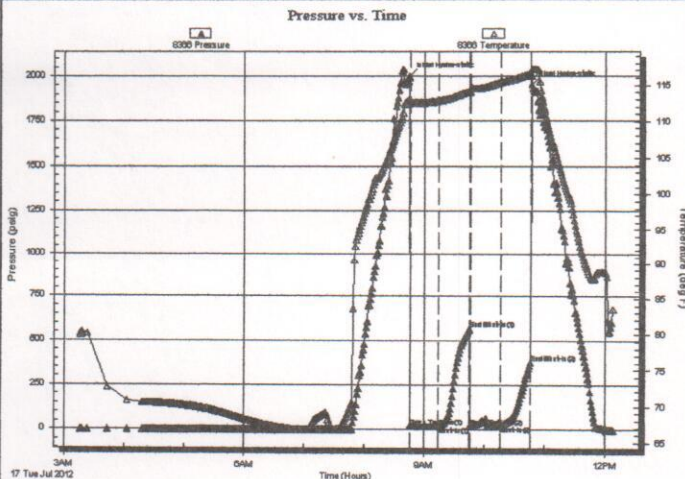
Serial #: 8366

Inside

Press@RunDepth: **20.22 psig @ 3981.00 ft (KB)**
 Start Date: **2012.07.17** End Date: **2012.07.17**
 Start Time: **03:16:20** End Time: **12:08:05**

Capacity: **8000.00 psig**
 Last Calib.: **2012.07.17**
 Time On Btrr: **2012.07.17 @ 08:44:50**
 Time Off Btrr: **2012.07.17 @ 10:46:50**

TEST COMMENT: IFF-Weak Surface Blow
 ISI-Dead
 FFP-Dead
 FSI-Dead



PRESSURE SUMMARY

Time (Min.)	Pressure (psig)	Temp (deg F)	Annotation
0	2001.64	113.20	Initial Hydro-static
1	15.16	112.49	Open To Flow (1)
30	18.07	112.82	Shut-In(1)
60	565.57	114.12	End Shut-In(1)
61	19.78	114.11	Open To Flow (2)
91	20.22	115.34	Shut-In(2)
121	377.72	116.49	End Shut-In(2)
122	1952.66	117.16	Final Hydro-static

Recovery

Length (ft)	Description	Volume (bbl)
6.00	Mud W/Oil Specks	0.08

* Recovery from multiple tests

Gas Rates

	Choke (inches)	Pressure (psig)	Gas Rate (Mcf/d)

Serial #: 8366

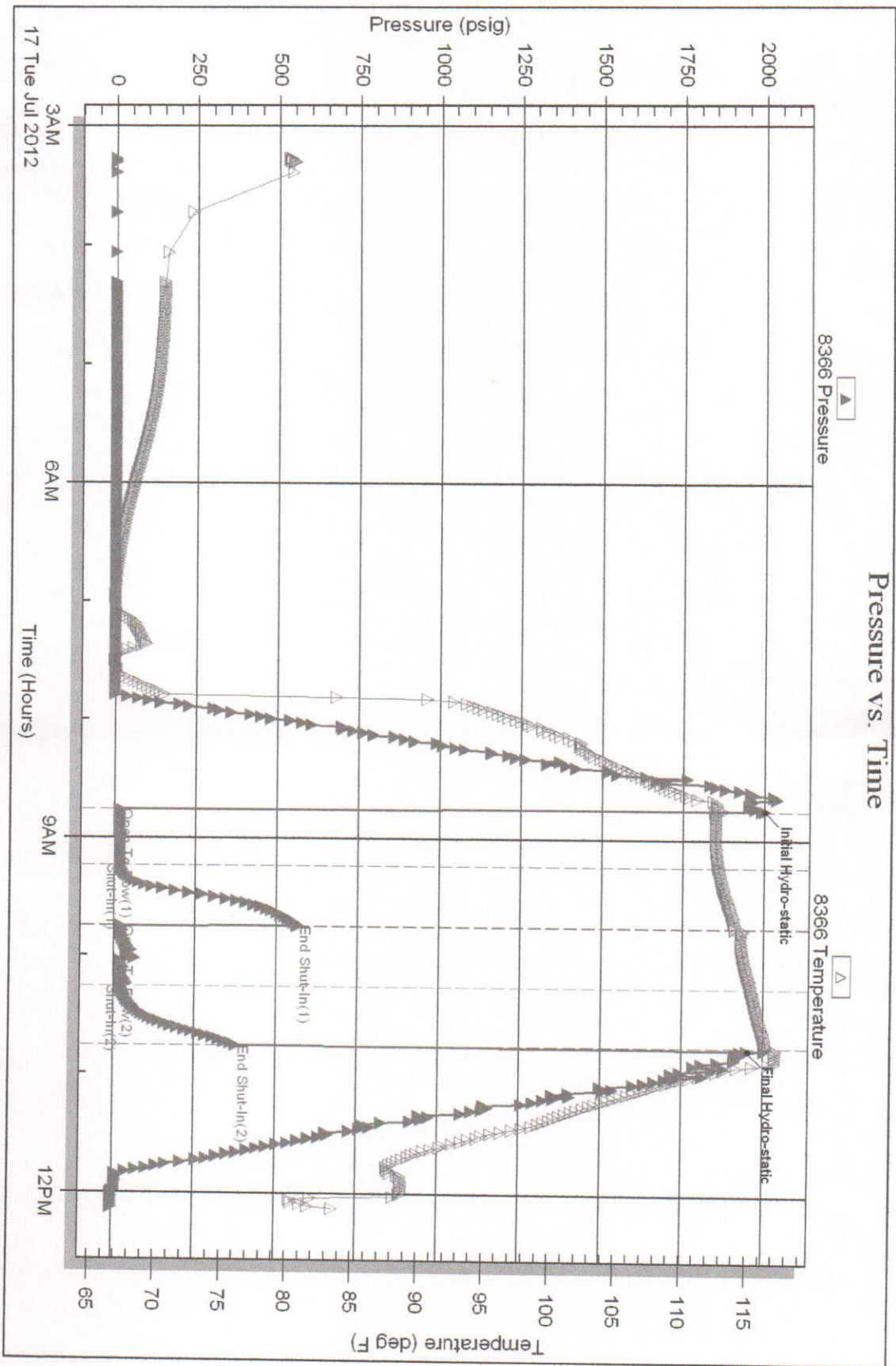
Inside

Rains & Williamson Oil Co.

For #6-36

DST Test Number: 2

Pressure vs. Time



Trilobite Testing, Inc

Ref. No: 47831

Printed: 2012.07.17 @ 12:17:13



TRILOBITE TESTING, INC

DRILL STEM TEST REPORT

Rains & Williamson Oil Co.

36-9s-26w-Graham

220 W. Douglas
Suite 110
Wichita, KS. 67202
ATTN: Scott Alberg

Fore #6-36

Job Ticket: 47832

DST#: 3

Test Start: 2012.07.17 @ 20:16:47

GENERAL INFORMATION:

Formation: I-J

Deviated: No Whipstock: 0.00 ft (KB)

Time Tool Opened: 23:14:17

Time Test Ended: 03:22:17

Test Type: Conventional Bottom Hole (Reset)

Tester: Jason McLemore

Unit No: 54

Interval: **4014.00 ft (KB) To 4058.00 ft (KB) (TVD)**

Reference Elevations: 2621.00 ft (KB)

Total Depth: 4058.00 ft (KB) (TVD)

2614.00 ft (CF)

Hole Diameter: 7.80 inches Hole Condition: Good

KB to GR/CF: 7.00 ft

Serial #: 8366

Inside

Press@RunDepth: 20.07 psig @ 4050.00 ft (KB)

Capacity: 8000.00 psig

Start Date: 2012.07.17

End Date: 2012.07.18

Last Calib.: 2012.07.18

Start Time: 20:16:47

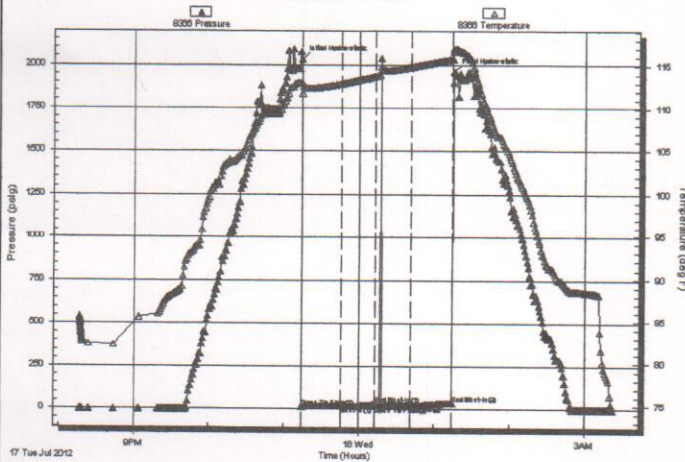
End Time: 03:22:17

Time On Btm: 2012.07.17 @ 23:14:02

Time Off Btm: 2012.07.18 @ 01:15:17

TEST COMMENT: IFF-Surge On Open, Dead After
ISI-Dead
FFP-dead, Flush Tool, Surge Then Dead
FSI-Dead

Pressure vs. Time



PRESSURE SUMMARY

Time (Min.)	Pressure (psig)	Temp (deg F)	Annotation
0	2032.13	113.11	Initial Hydro-static
1	14.65	111.80	Open To Flow (1)
32	17.42	112.93	Shut-In(1)
59	26.48	113.84	End Shut-In(1)
59	17.66	113.85	Open To Flow (2)
88	20.07	114.94	Shut-In(2)
121	36.16	115.87	End Shut-In(2)
122	1959.88	117.05	Final Hydro-static

Recovery

Length (ft)	Description	Volume (bbl)
6.00	Drilling Mud	0.08

* Recovery from multiple tests

Gas Rates

Choke (inches)	Pressure (psig)	Gas Rate (Mcf/d)

Serial #: 8366

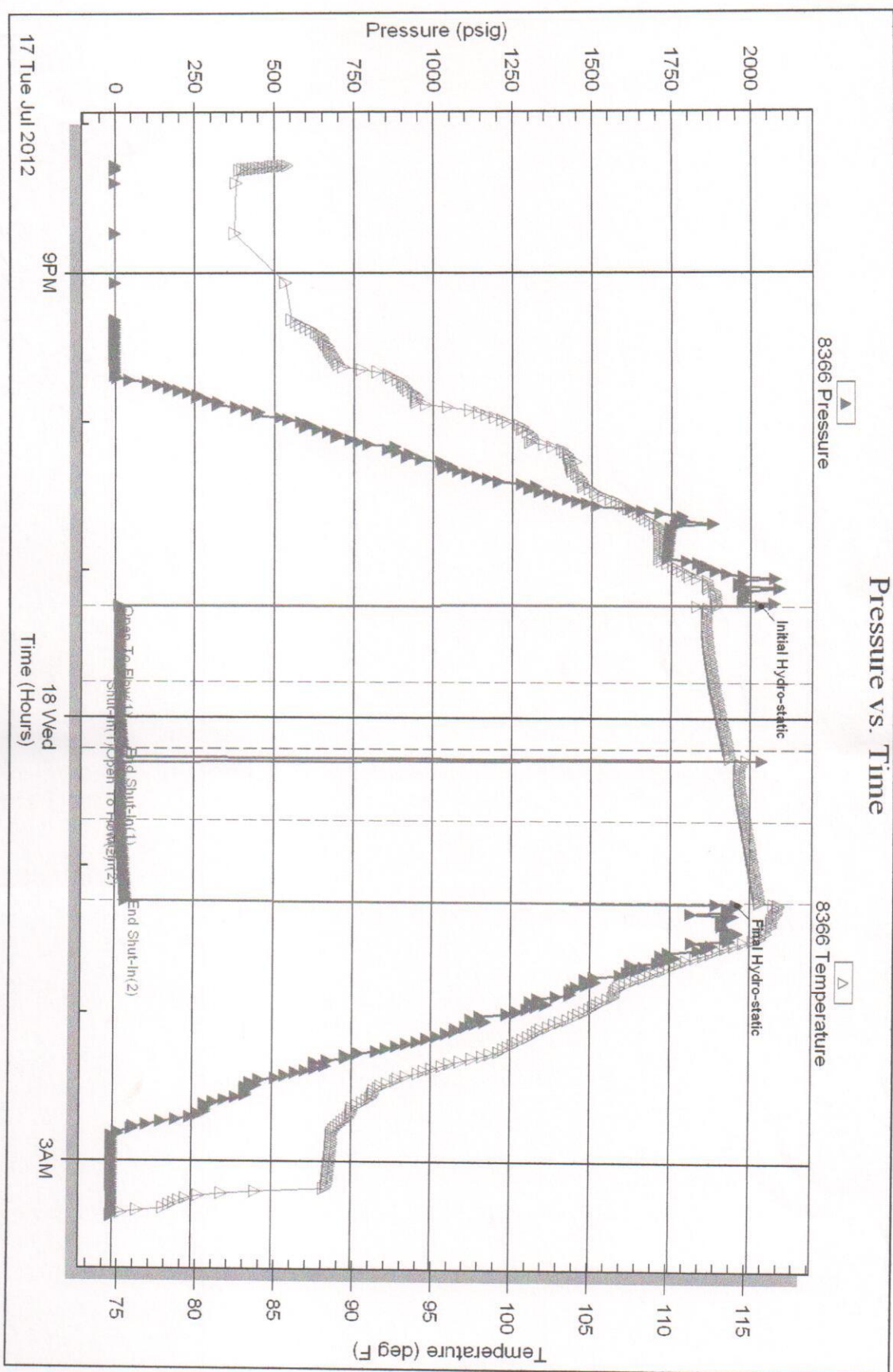
Inside

Rains & Williamson Oil Co.

Fore #6-36

DST Test Number: 3

Pressure vs. Time



Triobite Testing, Inc

Ref. No: 47832

Printed: 2012.07.18 @ 03:30:59



TRILOBITE TESTING, INC

DRILL STEM TEST REPORT

Rains & Williamson Oil Co.

36-9s-26w-Graham

220 W. Douglas
Suite 110
Wichita, KS. 67202
ATTN: Scott Alberg

Fore #6-36

Job Ticket: 47833

DST#: 4

Test Start: 2012.07.18 @ 09:59:50

GENERAL INFORMATION:

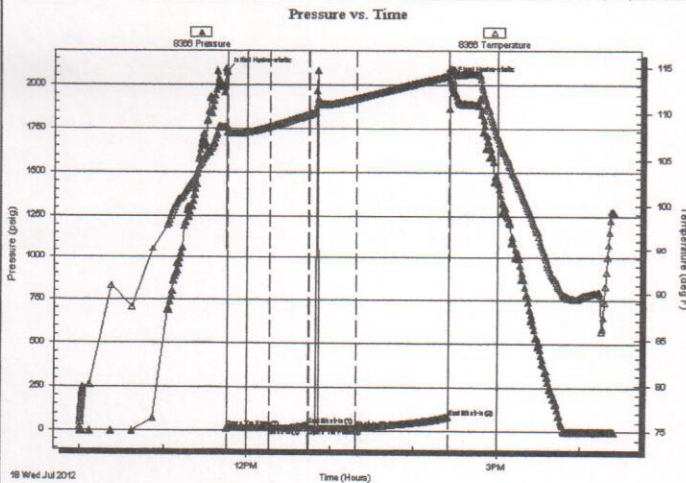
Formation: **K**
 Deviated: **No** Whipstock: **0.00 ft (KB)**
 Time Tool Opened: **11:45:20**
 Time Test Ended: **16:24:20**
 Interval: **4057.00 ft (KB) To 4080.00 ft (KB) (TVD)**
 Total Depth: **4080.00 ft (KB) (TVD)**
 Hole Diameter: **7.80 inches** Hole Condition: **Good**
 Test Type: **Conventional Bottom Hole (Reset)**
 Tester: **Jason McLemore**
 Unit No: **54**
 Reference Elevations: **2621.00 ft (KB)**
2614.00 ft (CF)
KB to GR/CF: 7.00 ft

Serial #: 8366

Inside

Press@RunDepth: **17.97 psig @ 4059.00 ft (KB)**
 Start Date: **2012.07.18** End Date: **2012.07.18** Capacity: **8000.00 psig**
 Start Time: **09:59:50** End Time: **16:24:20** Last Calib.: **2012.07.18**
 Time On Btmr: **2012.07.18 @ 11:45:05**
 Time Off Btmr: **2012.07.18 @ 14:26:05**

TEST COMMENT: IFF-Surge Upon Open, Then Dead
 ISI-Dead
 FFP-Dead, Flush Tool. Surge Then Dead
 FSI-Dead



PRESSURE SUMMARY

Time (Min.)	Pressure (psig)	Temp (deg F)	Annotation
0	2078.94	108.65	Initial Hydro-static
1	14.61	107.93	Open To Flow (1)
31	15.95	108.59	Shut-In(1)
59	32.96	109.86	End Shut-In(1)
60	16.43	109.89	Open To Flow (2)
94	17.97	111.64	Shut-In(2)
160	84.17	114.11	End Shut-In(2)
161	2026.91	114.86	Final Hydro-static

Recovery

Length (ft)	Description	Volume (bbl)
3.00	Drilling Mud	0.04

* Recovery from multiple tests

Gas Rates

	Choke (inches)	Pressure (psig)	Gas Rate (Mcf/d)

Serial #: 8366

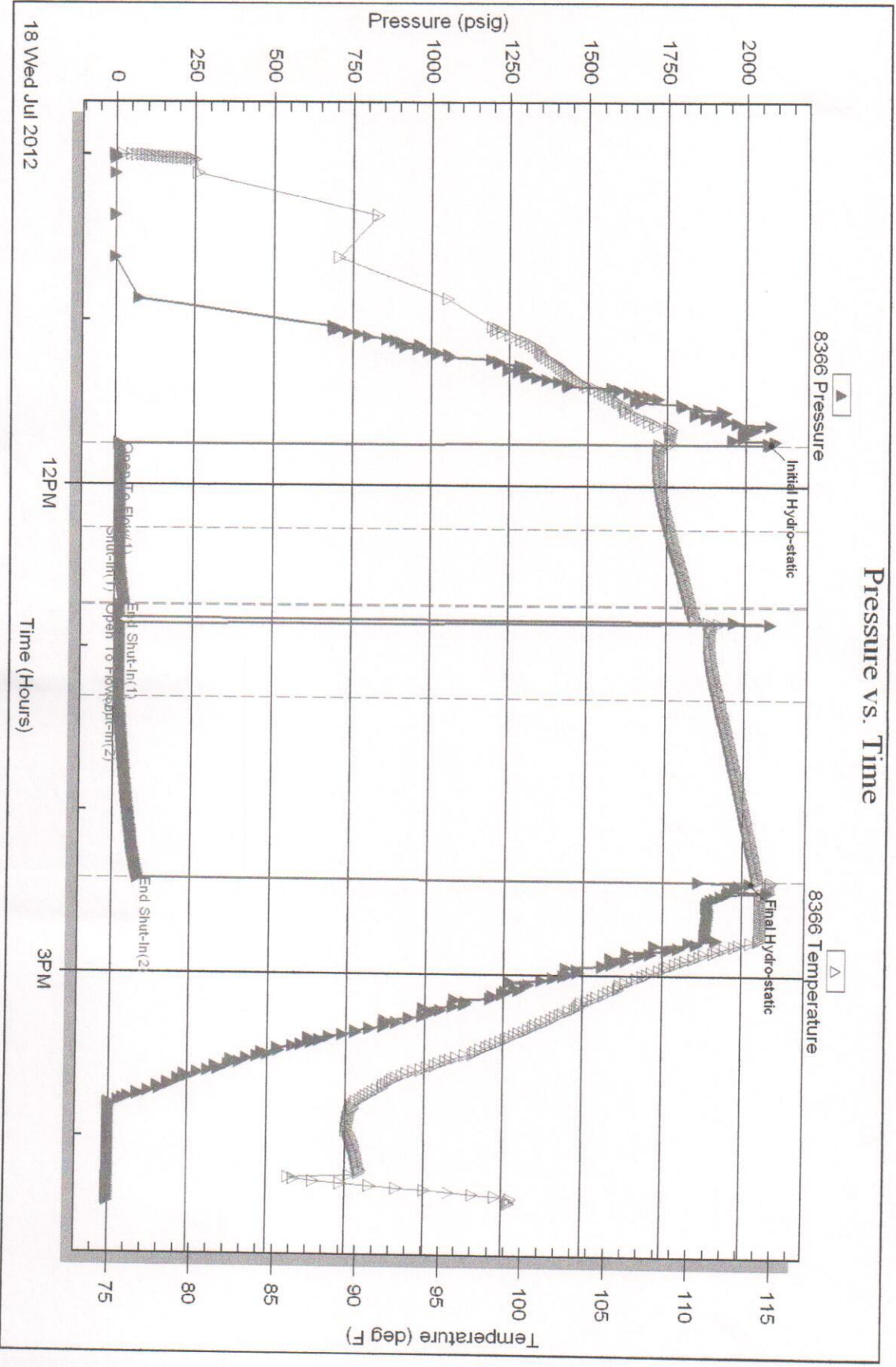
Inside

Rains & Williamson Oil Co.

For #6-36

DST Test Number: 4

Pressure vs. Time



Trilobite Testing, Inc

Ref. No: 47833

Printed: 2012.07.18 @ 16:34:50



TRILOBITE TESTING, INC

DRILL STEM TEST REPORT

Rains & Williamson Oil Co.

36-9s-26w-Graham

220 W. Douglas
Suite 110
Wichita, KS. 67202
ATTN: Scott Alberg

Fore #6-36

Job Ticket: 47834

DST#: 5

Test Start: 2012.07.19 @ 08:14:53

GENERAL INFORMATION:

Formation: **C**
Deviated: **No** Whipstock: **0.00 ft (KB)**
Time Tool Opened: 09:43:38
Time Test Ended: 13:05:23

Test Type: **Conventional Straddle (Reset)**
Tester: **Jason McLemore**
Unit No: **54**

Interval: **3884.00 ft (KB) To 3925.00 ft (KB) (TVD)**
Total Depth: **4150.00 ft (KB) (TVD)**
Hole Diameter: **7.80 inches** Hole Condition: **Good**

Reference Elevations: **2621.00 ft (KB)**
2614.00 ft (CF)
KB to GR/CF: **7.00 ft**

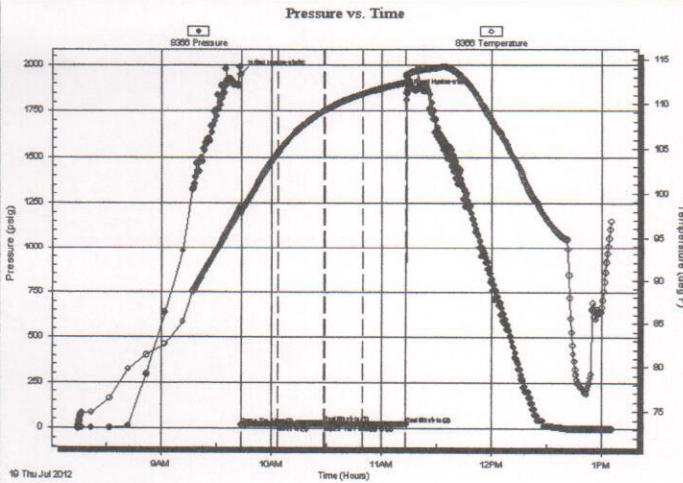
Serial #: 8366

Inside

Press@RunDepth: **21.43 psig @ 3888.00 ft (KB)**
Start Date: **2012.07.19** End Date: **2012.07.19**
Start Time: **08:14:53** End Time: **13:05:23**

Capacity: **8000.00 psig**
Last Calib.: **2012.07.19**
Time On Btrm: **2012.07.19 @ 09:43:23**
Time Off Btrm: **2012.07.19 @ 11:13:53**

TEST COMMENT: **IFP-Weak Blow, Died in 5 Min.**
ISI-Dead
FFP-Dead
FSI-Dead



PRESSURE SUMMARY

Time (Min.)	Pressure (psig)	Temp (deg F)	Annotation
0	1951.95	98.55	Initial Hydro-static
1	17.17	97.76	Open To Flow (1)
20	21.79	104.50	Shut-In(1)
46	23.93	109.23	End Shut-In(1)
46	20.00	109.25	Open To Flow (2)
67	21.43	111.11	Shut-In(2)
90	22.80	112.40	End Shut-In(2)
91	1847.42	113.11	Final Hydro-static

Recovery

Length (ft)	Description	Volume (bbl)
63.00	Drilling Mud	0.88

* Recovery from multiple tests

Gas Rates

	Choke (inches)	Pressure (psig)	Gas Rate (Mcf/d)

Serial #: 8366

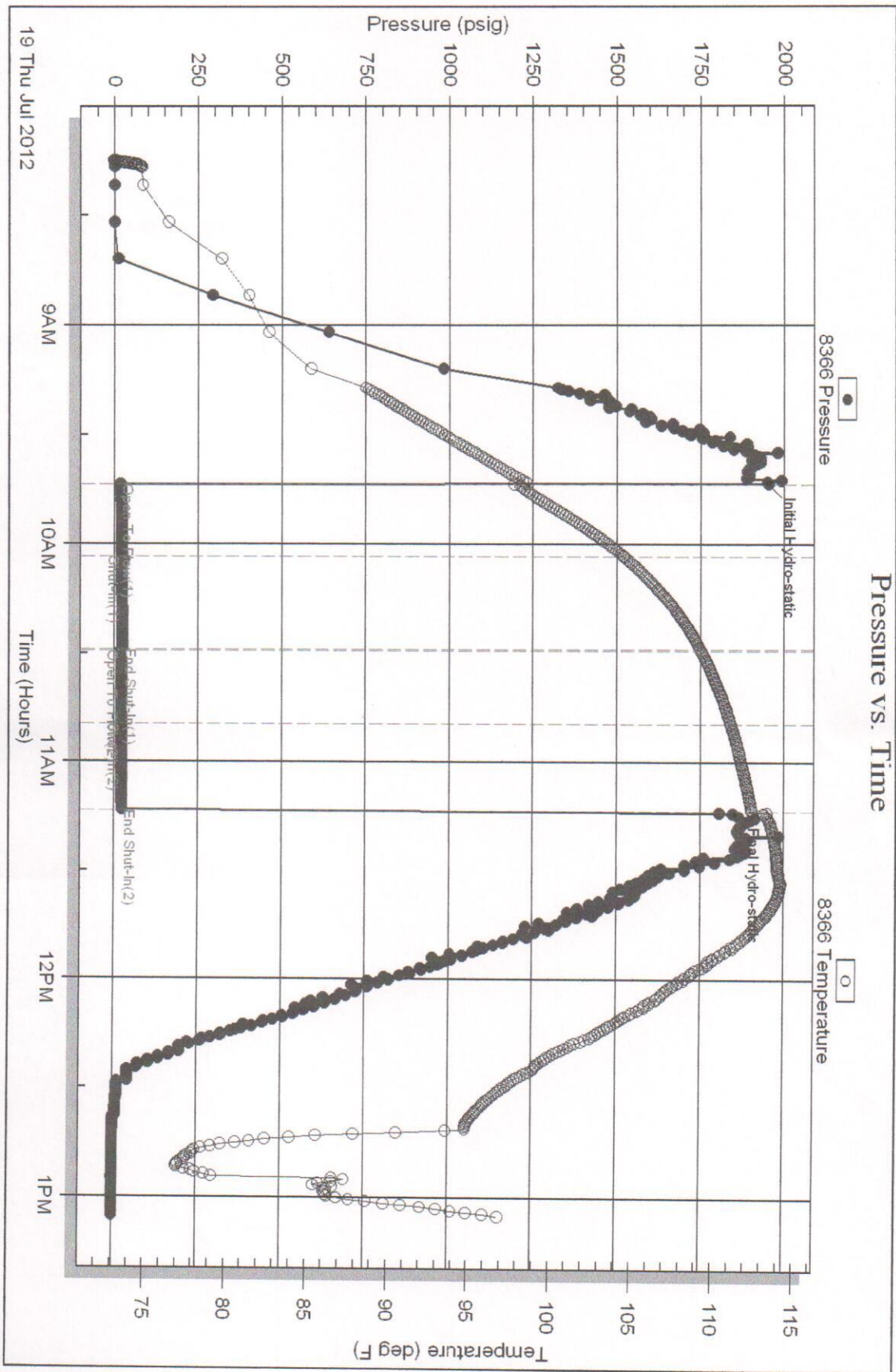
InstId: Inside

Rains & Williamson Oil Co.

Fore #6-36

DST Test Number: 5

Pressure vs. Time



Triobite Testing, Inc

Ref. No: 47834

Printed: 2012.07.19 @ 13:24:46