

GEOLOGIST'S REPORT

DRILLING TIME AND SAMPLE LOG

COMPANY Rains & Williamson Oil Co., Inc

LEASE Fore 6-36

FIELD Gra-Sher Northwest

LOCATION 80'S W/2 E2 NW

SEC 36 TWP 9 S RGE 26 W

COUNTY Sheridan STATE Kansas

CONTRACTOR American Eagle Drilling, Rig #2

SPUD July 19, 2012 COMP July 19, 2012

RTD 4150 LTD 4146

MUD UP 2997' TYPE MUD Chemical

ELEVATIONS

KB 2621

DF _____

GL 2614

Measurements Are All
From Kelly Bushing

CASING
SURFACE 8 5/8" set @ 247'

PRODUCTION _____

ELECTRICAL SURVEYS
Log Tech
CN/For, Micro, Oil

SAMPLES SAVED FROM 3500 TO RTD

DRILLING TIME KEPT FROM 3500 TO RTD

SAMPLES EXAMINED FROM 3500 TO RTD

GEOLOGICAL SUPERVISION FROM 3500 TO RTD

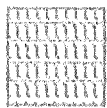
GEOLOGIST ON WELL W. Scott Alberg

FORMATION TOPS	LOG	SAMPLES	
<u>Anhydrite</u>	<u>2259 (+1362)</u>	<u>2262 (+359)</u>	
<u>B/Anhydrite</u>	<u>2293 (+1328)</u>	<u>2301 (+330)</u>	
<u>Lopoka</u>	<u>3615 (-994)</u>	<u>3620 (-999)</u>	
<u>Heebner</u>	<u>3828 (-1207)</u>	<u>3834 (-1213)</u>	0.46
<u>Tohonto</u>	<u>3851 (-1230)</u>	<u>3856 (-1035)</u>	
<u>Lansing</u>	<u>3868 (-1247)</u>	<u>3873 (-1252)</u>	36
<u>300' zone</u>	<u>4066 (-1445)</u>	<u>4073 (-1452)</u>	
<u>B/KC</u>	<u>4098 (-1477)</u>	<u>4103 (-1482)</u>	
<u>RTD</u>	<u>4146 (-1525)</u>	<u>4150 (-1529)</u>	

REMARKS: Based on the results of the DST's, sample shows & log calculations, it was recommended by all parties this test well be plugged & abandoned.

Respectfully,
W. Scott Alberg
#54

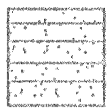
LEGEND



Anhydrite



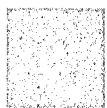
Salt



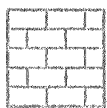
Sandstone



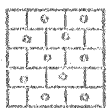
Shale



Carbon



Limestone



Oil Limestone



Chert



Dolomite

DRILLING TIME

Logarithmic Scale

LOG TIME

.5 1 2 3 4 5 10 15 20 30

2200

KB 2621

20

40

60

Anhydrite

2263 (+358)

e-log
2259 (+362)

80

B/Anhydrite

2301 (+320)

e-log 2293 (+320)

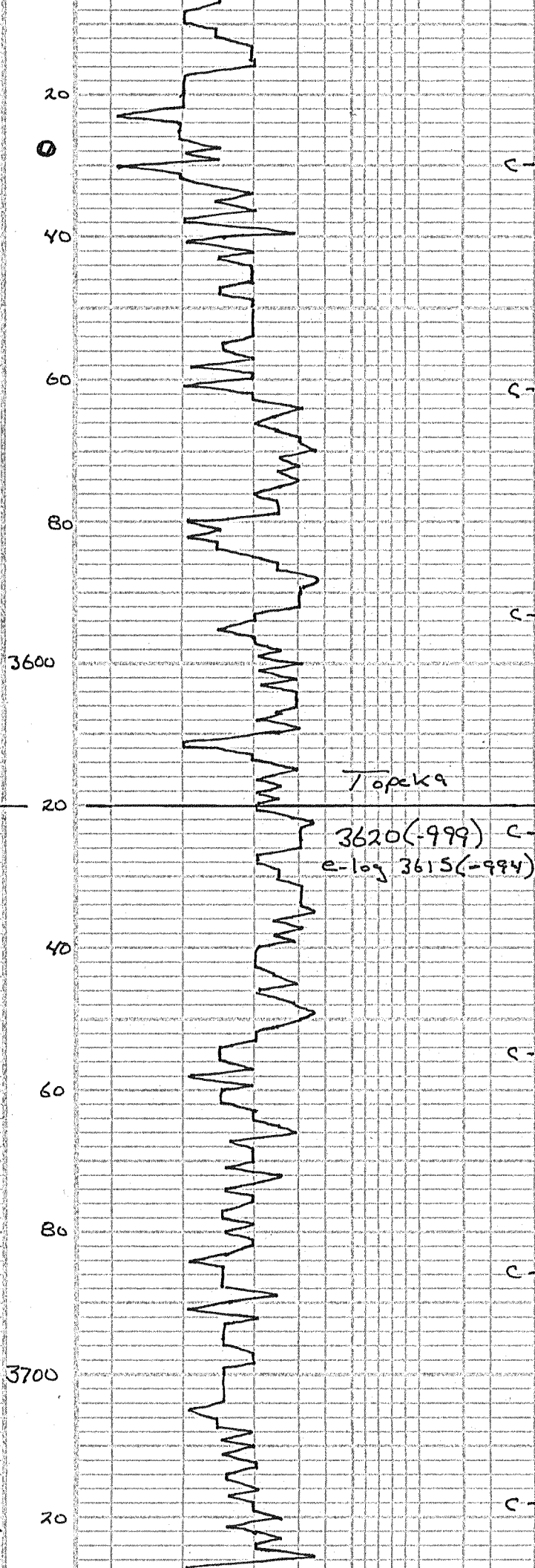
2300

20

Bit Trap 2747
Strap Pipe
Board 2747.67
Strap 2744.30

Strap Short 3.37'
Survey 3/4°

3500



LS; cream-buff, tan, xln, foss.
foss φ, sl. chalky, U.
sl. show oil, no odor

Shale; grey, green

LS; tan, grey, xln, dense,
trace chalky

Shale; grey

LS; tan, buff, xln, dense
sl. foss. + n. chalky

LS; grey-white, xln, dense
foss. in pt

July 15, 2012
3600' @ 7:00 a.m.

Shale; grey-green

Topack

3620(-999) c-
e-log 3615(-994) ○

LS; cream, buff, xln,
partly dense, oolitic,
tr. col. nodules &
sl. show dk oil, no odor

LS; cream, buff, xln, dense
chalky

LS; cream, tan, xln, foss,
tr. foss φ, chalky,
NSFO

Shale; grey, reddish

LS; buff, tan, xln, foss

Andy's Mud Ck
7-15-12 @ 10:30am

U1555

wt 9.1

pH 11.5

wk 8.0

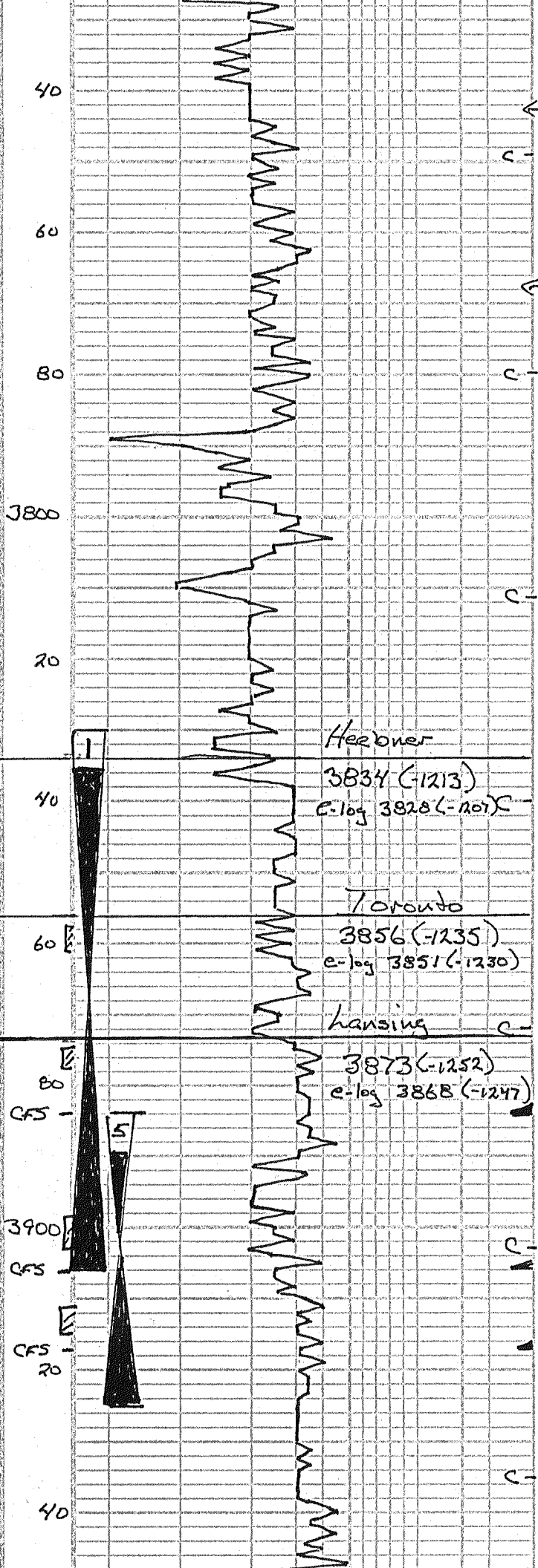
chl 2000

LCM 3#

LS; cream buff, xln, dense
chalky, sl. foss.

LS; cream, white, buff, xln, chalky
sl. foss

Shale; dk grey



LS; grey-white, grey, xln shaley

Shale; grey-green, some red-yellow

LS; grey-white, xln, dense foss.

Shale; grey, reddish

LS; grey-white, buff, xln dense, sl. chalky

LS; tan, cream, xln, oolitic, oolitic, barren, no odor

Shale; lt grey

LS; grey-white, xln, sl. shaley

LS; buff, cream, foss

Shale; grey-blk

LS; grey-white, xln, dense

Shale; greenish grey

LS; cream, buff, tan, xln, foss., tr. ppt, some dk asphaltic staining, sl. show oil, no odor

Shale; grey-reddish

LS; cream, tan, white, xln, tr. oolites, tr. sl. ool., sl. show oil, dk stain on edges, no odor, tr. chalky at base

LS; buff-white, xln, dense, sl. foss. chalky in ppt.

Shale; grey-red

LS; cream-white, xln, foss, tr. foss scattered vugs, sl. oolitic, show oil, faint odor

LS; buff-white, xln, foss frags, xln, few small vugs, sl. show oil, faint odor

LS; cream-white, xln, dense chalky, dk stain

LS; cream buff, tan, xln, mostly dense, scattered vugs, lt. stain, no vugs, sl. show oil, poor odor

LS; white, tan, xln, dense, chalky

Geologist on location

DS#1 3830-3906
Times 30-45-30-45
IHP 1978 FHP 1978
JFP 51-78 FFP 82-101
FSIP 922 FSIP 850

Recovery:
1st opening - 2 3/4" blow
no blow back
2nd opening 1 1/4" blow
no blow back
80' U30CM (5% O, 95% W)
30' U30CWM (1% O, 59% W, 40% M)
Temp 118°

KB 2621

Andy's Mud Co
3906 @ 10:30 am
July 16, 2012
UT 360
wt 9.2
pit 10.0
WL 8.8
Chl 3000
KCM 3#

July 16, 2012
3906 @ 7:00 am
Board 3903.44
Strap 3898.36
strap 5.08 short
Survey @ 3906
1/2 degree

DS#5 3884-3925
Straddle
Times 15-30-15-30
IHP 1952 FHP 1847
JFP 17-22 FFP 20-21
FSIP 24 FSIP 23

Recovery:
1st opening - weak blow

2nd opening - no blow
63' Drilling Mud

OST#2 3979-4014
Times 30-30-30-30
IHP 2002 FHP 1953
IFP 15-18 FFP 20-20
ISIP 566 FSIP 378
Recovery:
1st opening - weak surface
no blow back
2nd opening - no blow
no blow back
6' Mud w/ oil specks
Temp 117°

July 17, 2012
4014 @ 7:00 a.m.
Andy's Mud Ck
7-17-12 4014 @ 11:00 am
U13.53 Wt 9.6
wt 9.5 Chl 3000
PH 10.0 Lcm 3#

OST#3 4014-4058
Times 30-30-30-30
IHP 2032 FHP 1960
IFP 15-17 FFP 18-20
ISIP 26 FSIP 36
Recovery:
1st opening - surge,
then diech
no blow back
2nd opening - no blow
flushed tool - no help
no blow back
6' Mud Temp 117°

July 18, 2012
4064 @ 7:00 a.m.

OST#4 4057-4080
Times 30-30-30-30
IHP 2079 FHP 2027
IFP 15-16 FFP 16-18
ISIP 33 FSIP 84
Recovery:
1st opening - weak blow
died
no blow back
2nd opening - no blow
flushed tool
no help
no blow back
3' DMG Mud Temp 115°

Andy's Mud Ck
July 18, 2012
4080 @ 10:00 am
U13.57 Wt 8.8
wt 9.5 Chl 2000
PH 10.0 Lcm 3#
Survey @ 4150
10

KS; crm, buff, xln, foss frags,
xln ϕ , show (f oil), fair
odor, sl. chalky
KS; buff-white, xln, oolitic, foss
frags, xln ϕ , tr. oolitic ϕ ,
show oil, fair odor
KS; crm, white, xln, v. chalky
tr foss
KS; crm, buff, xln, chalky,
tr grey chalk
Shale; grey - blk
KS; tan, buff, xln, dense, sl.
foss. chalky

KS; crm, buff, xln, foss frags
tr xln ϕ , trace ugs
poor odor, sl. show oil
KS; buff-white, xln, dense
sl. foss., chalky imp.

Shale; reddish, grey
KS; tan, buff, xln, xln ϕ ,
foss, show oil, faint
odor, some fossils, brown
staining

Shale; grey, reddish brown
KS; buff-white, xln, foss. tr.
scattered xln ϕ , small
ugs, tr. spotted staining
show oil, faint odor

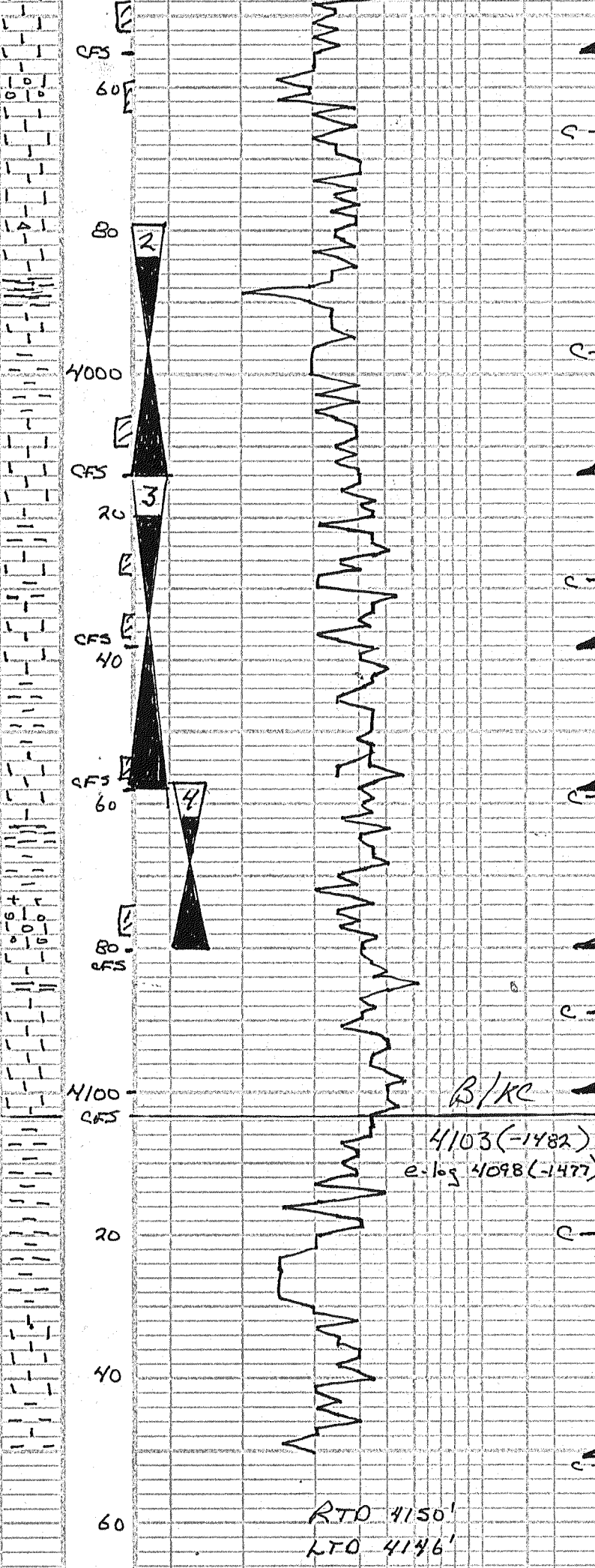
Shale; grey - blk, reddish brown
KS; buff, tan-white, xln, oolitic,
interoolitic ϕ , some ugs, fair
show oil, fair odor, tr
staining
Shale; red-grey - blk

KS; buff, crm-white, xln, dense
tr foss, chalky, asphaltic
stain, no odor, no show
free oil.

Shale; reddish brown, green
calcitic

Shale; reddish brown, some
vari-colored, green

KS; buff, xln, dense,
tr foss.



B/KC
4103 (-1482)
e-log 4098 (-1477)

RTD 4150'
LTD 4146'

