

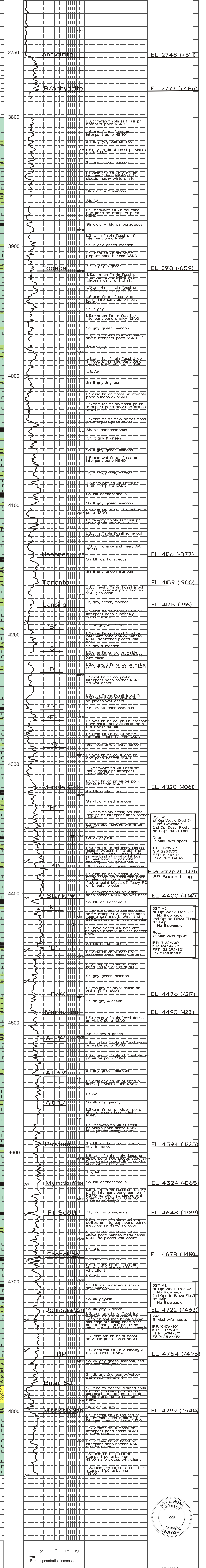
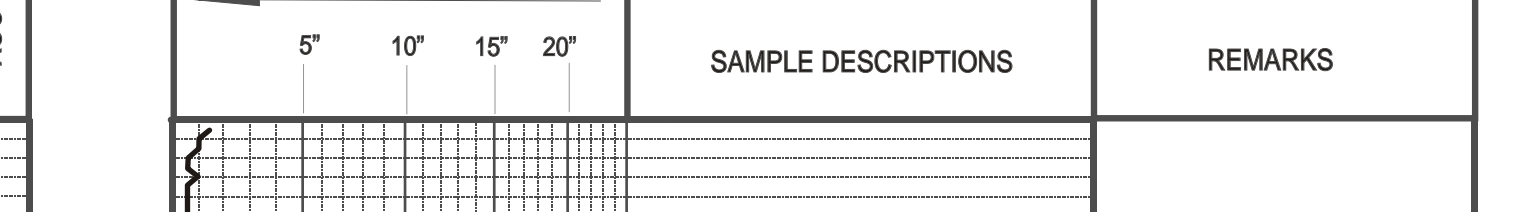
GEOLOGIST'S REPORT
 DRILLING TIME AND SAMPLE LOG

OPERATOR: Russell Oil, Inc. WELL NO.: #1-5
 LEASE: Soucie FIELD: Danime
 API: #15-109-21086 LOCATION: 465'FN & 1700'FE
 SEC: 5 TWP: 11S RNG: 34W
 COUNTY: Logan STATE: Kansas
 CONTRACTOR: HZ Drilling Rig #2
 COMM: 5-3-2012 COILED: 4814-202
 R/O: 4830 LOG TO: 4848 TD:
 SAMPLES SAVED FROM: 3800 TO: 4848
 DRILLING TIME SAVED FROM: 3800 TO: TD
 SAMPLES EXAMINED FROM: 3800 TO: TD
 GEOLOGICAL SUPERVISION FROM: 3800 TO: TD
 MUD UP: 3500 MUD TYPE: Chemical

DE: 2886
 MEASUREMENTS ARE ALL FROM KB
 CASING RECORD
 9 5/8" set at
 270' w/200' sx.
 Production D&A
 SURVEYS
 Dual Induction
 Dual Comp. Porosity
 Microlog

FORMATION: Top Datum Top Sample Bottom Stratigraphical
 Anhydrite 2748 (+51.0) 2754 (+50.5) 1-1.4
 B/Anhydrite 2773 (+48.6) 2780 (+47.9) 6-6
 Heabner 486 (-87.7) 4140 (-88.0) -6-6
 Lansing 475 (-96) 4179 (-92.0) -5-4
 Stark 4400 (-114) 4404 (-115) -2-6
 B/KC 4476 (-127) 4480 (-128) -4-4
 Marmaton 4490 (-133) 4494 (-133.5) -6-3
 Pawnee 4524 (-138.5) 4526 (-138.7) -2-2
 Cherokee 4548 (-143) 4549 (-143) -1-1
 Johnson Zn 4722 (-166.3) 4724 (-166.5) -2-2
 Mississippi 4799 (-154.0) 4802 (-154.3) -3-3
 LTD 4848 (-159) 4850 (-159) -2-2

LEGEND



ELEVATION: 3259 KB
 OPERATOR: Russell Oil, Inc. LOCATION: 465'FN & 1700'FE
 LEASE: Soucie WELL NO.: #1-5 SEC: 5 TWP: 11S RNG: 34W
 API: 15-109-21086 FIELD: Wildcat COUNTY: Logan STATE: Kansas

