



TRILOBITE TESTING, INC.

DRILL STEM TEST REPORT

Credo Petroleum Corporation

22-17s-29w Lane Co. KS

1801 Broadway # 900
Denver CO. 80202-3858

Nancy 1-22

Job Ticket: 48323

DST#: 4

ATTN: Bruce Ard

Test Start: 2012.07.02 @ 12:00:00

GENERAL INFORMATION:

Formation: **Cherokee**

Deviated: No Whipstock: ft (KB)

Time Tool Opened: 14:23:15

Time Test Ended: 19:24:00

Test Type: Conventional Bottom Hole (Reset)

Tester: Jace McKinney

Unit No: 46

Interval: 4482.00 ft (KB) To 4550.00 ft (KB) (TVD)

Reference Elevations: 2816.00 ft (KB)

Total Depth: 4550.00 ft (KB) (TVD)

2805.00 ft (CF)

Hole Diameter: 7.88 inches Hole Condition: Fair

KB to GR/CF: 11.00 ft

Serial #: 8675 Inside

Press @ Run Depth: 33.48 psig @ 4483.00 ft (KB)

Capacity: 8000.00 psig

Start Date: 2012.07.02

End Date: 2012.07.02

Last Calib.: 2012.07.02

Start Time: 12:00:15

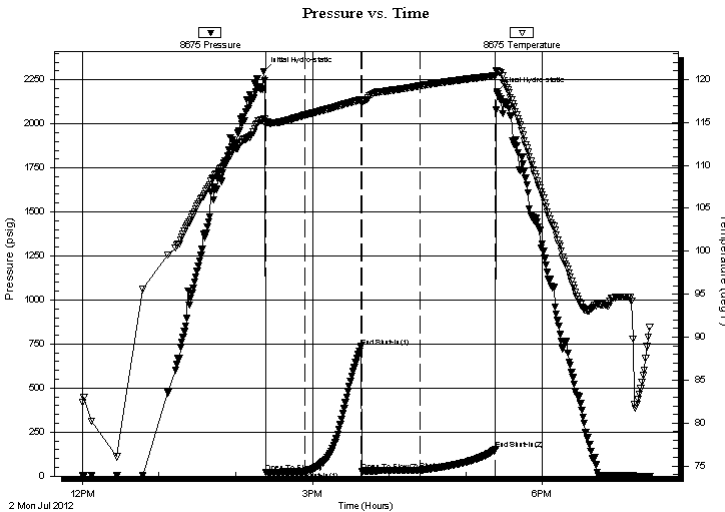
End Time: 19:24:00

Time On Btm: 2012.07.02 @ 14:21:45

Time Off Btm: 2012.07.02 @ 17:24:15

TEST COMMENT: Built to 1/2" blow
No return blow
No blow
No return blow

PRESSURE SUMMARY



Time (Min.)	Pressure (psig)	Temp (deg F)	Annotation
0	2298.47	115.43	Initial Hydro-static
2	19.71	114.81	Open To Flow (1)
33	25.47	115.85	Shut-In(1)
77	735.54	117.65	End Shut-In(1)
77	27.99	117.41	Open To Flow (2)
122	33.48	119.26	Shut-In(2)
182	151.18	120.45	End Shut-In(2)
183	2184.59	121.07	Final Hydro-static

Recovery

Length (ft)	Description	Volume (bbl)
10.00	100% Mud with oil spots	0.05

* Recovery from multiple tests

Gas Rates

Choke (inches)	Pressure (psig)	Gas Rate (Mcf/d)



**TRILOBITE
TESTING, INC.**

DRILL STEM TEST REPORT

FLUID SUMMARY

Credo Petroleum Corporation

22-17s-29w Lane Co. KS

1801 Broadway # 900
Denver CO. 80202-3858

Nancy 1-22

Job Ticket: 48323

DST#: 4

ATTN: Bruce Ard

Test Start: 2012.07.02 @ 12:00:00

Mud and Cushion Information

Mud Type: Gel Chem

Cushion Type:

Oil API:

deg API

Mud Weight: 9.00 lb/gal

Cushion Length:

ft

Water Salinity:

ppm

Viscosity: 72.00 sec/qt

Cushion Volume:

bbbl

Water Loss: 12.39 in³

Gas Cushion Type:

Resistivity: ohm.m

Gas Cushion Pressure:

psig

Salinity: 4700.00 ppm

Filter Cake: 1.00 inches

Recovery Information

Recovery Table

Length ft	Description	Volume bbl
10.00	100% Mud with oil spots	0.049

Total Length: 10.00 ft Total Volume: 0.049 bbl

Num Fluid Samples: 0

Num Gas Bombs: 0

Serial #:

Laboratory Name:

Laboratory Location:

Recovery Comments:

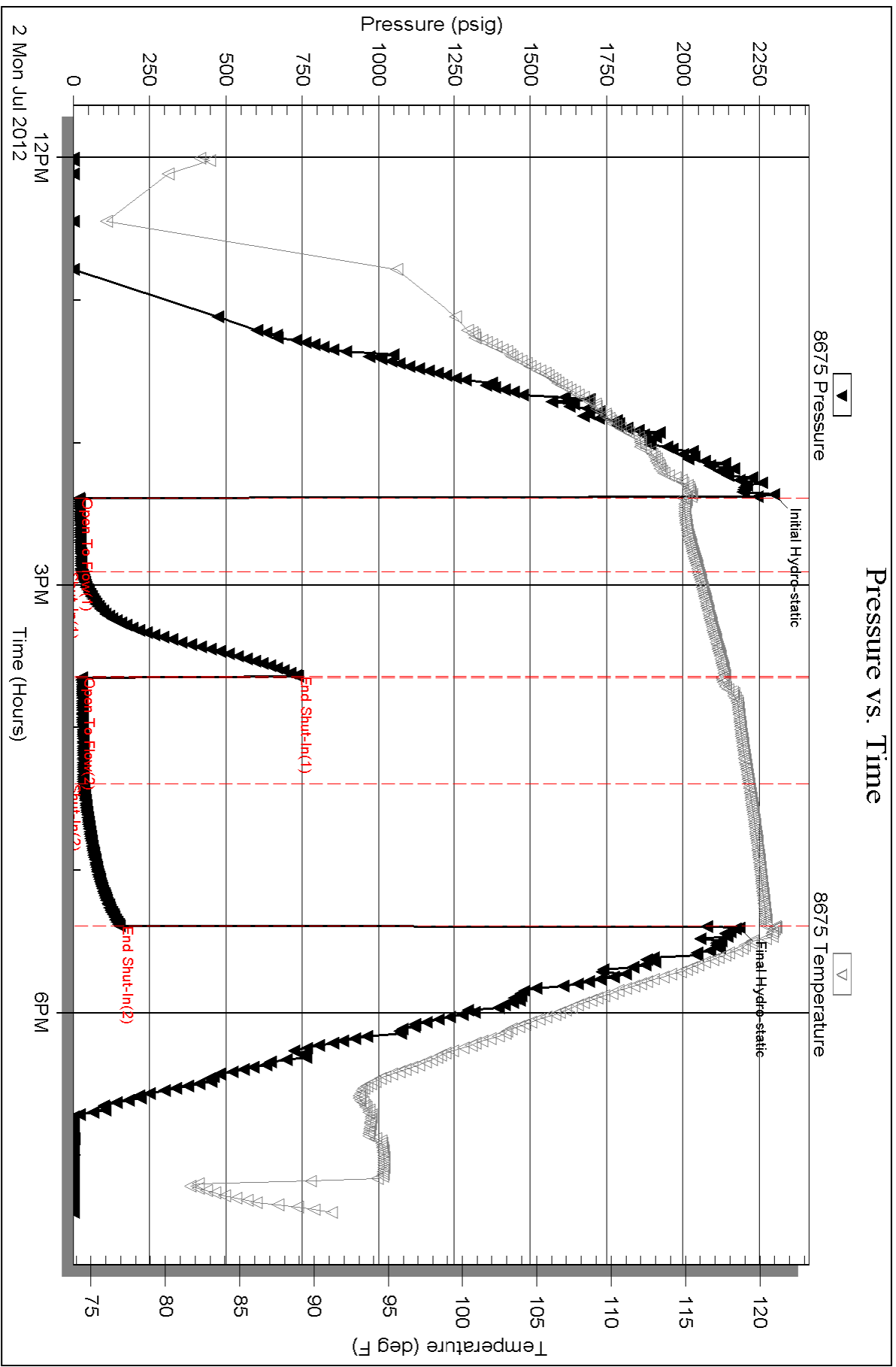
Serial #: 8675

Inside

Crede Petroleum Corporation

Nancy 1-22

DST Test Number: 4



Triobite Testing, Inc

Ref. No: 48323

Printed: 2012.07.03 @ 05:56:32

Serial #: 8650

Outside Credo Petroleum Corporation

Nancy 1-22

DST Test Number: 4

