

KEVIN L. KESSLER
CONSULTING PETROLEUM GEOLOGIST
(316) 522-7338

OPERATOR : MULL DRILLING COMPANY INC.
LEASE : ALBIN "A" WELL # : 1 - 26
LOCATION : 510' FNL & 2250' FWL
SEC: 26 TWP : 15 S RGE : 27 W
COUNTY : GOVE STATE : KANSAS

ELEVATION
KB : 2491
GL : 2486
MEASUREMENTS FROM
KB

CONTRACTOR : W W DRILLING RIG # 10
COMM : 05 / 21 / 2012 COMP : 05 / 30 / 2012
RTD : 4480 LOG TD : 4480
SAMPLES SAVED FROM : 3600 TO : RTD
GEOLOGICAL SUPERVISION FROM : 3600 TO : RTD
MUD UP : 3500 TYPE MUD : CHEMICAL

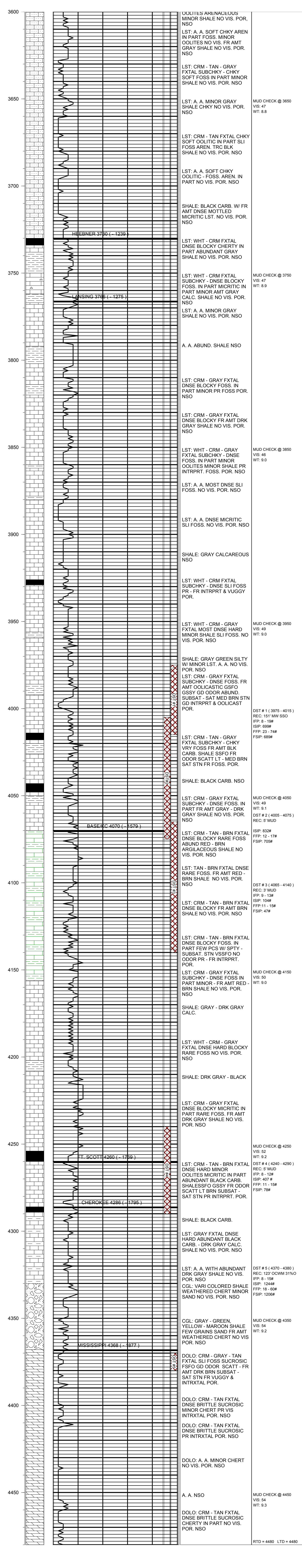
CASING RECORD
SURFACE :
8 5/8" @ 215'
PRODUCTION :

ELECTRICAL SURVEYS:

FORMATION	TOP	LOG	DATUM	TOP	SAMPLE	DATUM	STRUCT. COMP.
HEEBNER	3730		- 1239	3730		- 1239	FLAT
LANSING	3766		- 1275	3766		- 1275	+ 05
BASE / KC	4070		- 1579	4070		- 1579	+ 09
FORT SCOTT	4260		- 1769	4260		- 1769	+ 12
CHEROKEE	4286		- 1795	4286		- 1795	+ 10
MISSISSIPPI	4368		- 1877	4368		- 1877	- 08

DIL
CNL / CDL
MICRO
SONIC

REFERENCE WELL FOR STRUCTURAL COMPARISON :
CHIEF DRILLING # 1 - 26 OWENS 26 - T 15 S - R 27 W GOVE COUNTY KANSAS



COMMENTS:

**DUE TO NEGATIVE DST RESULTS THIS WELL
WAS PLUGGED AND ABANDONED**

KEVIN L. KESSLER