

ADVANTAGE ELEVATIONS

OIL FIELD SURVEYORS

BOX 8604 - PRATT, KS 67124
(620) 672-6491

428121
INVOICE NO.

R & B OIL & GAS
OPERATOR

A 1
NO.

Colborn
FARM

Barber COUNTY 23 S 33s T 12w R

2205' FSL & 635' FWL
LOCATION

ELEVATION: 1479' GR



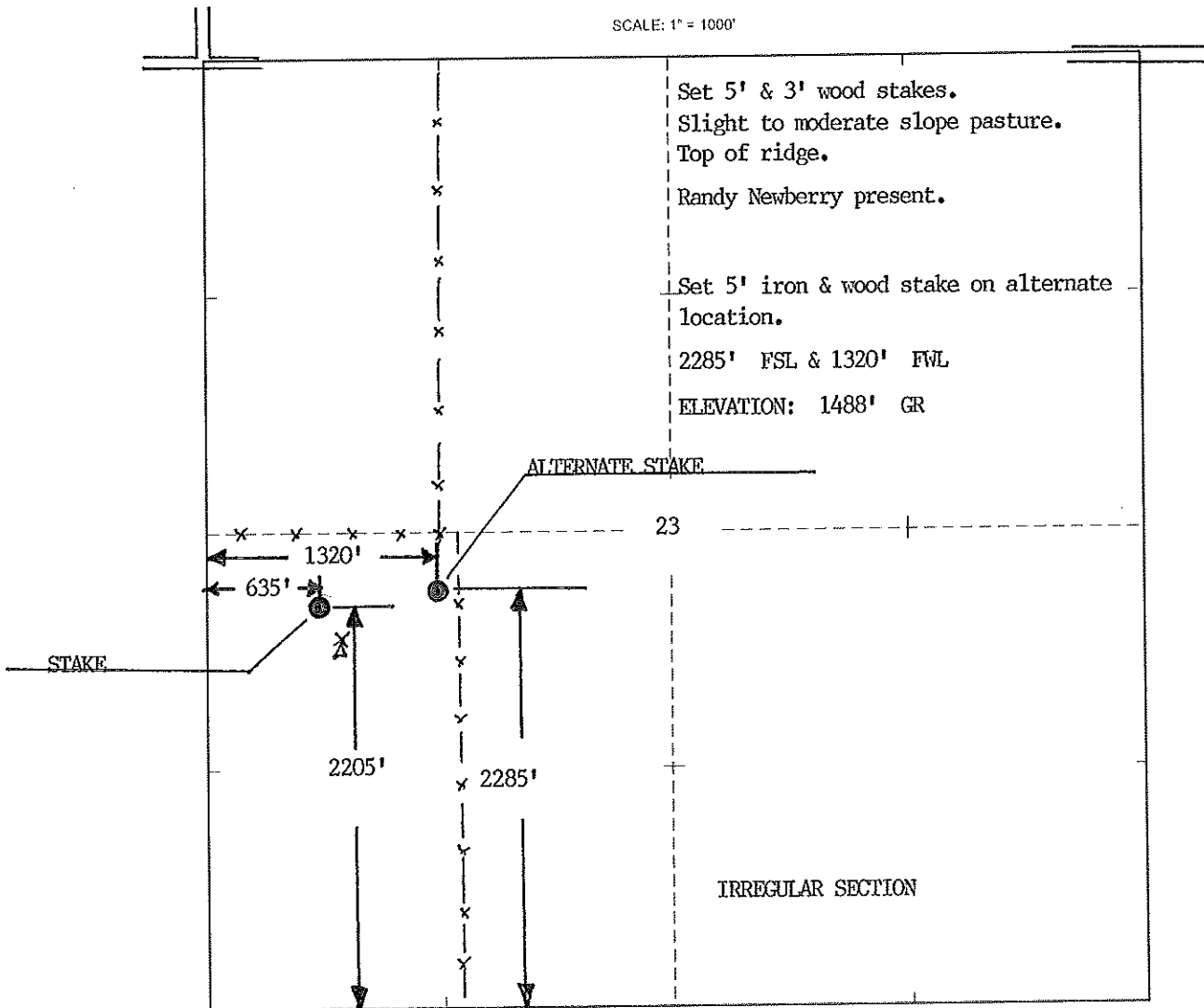
R & B OIL & GAS
PO Box 195
Attica, KS 67009-0195



*Use
Alternate
stake for
Colborn A1*

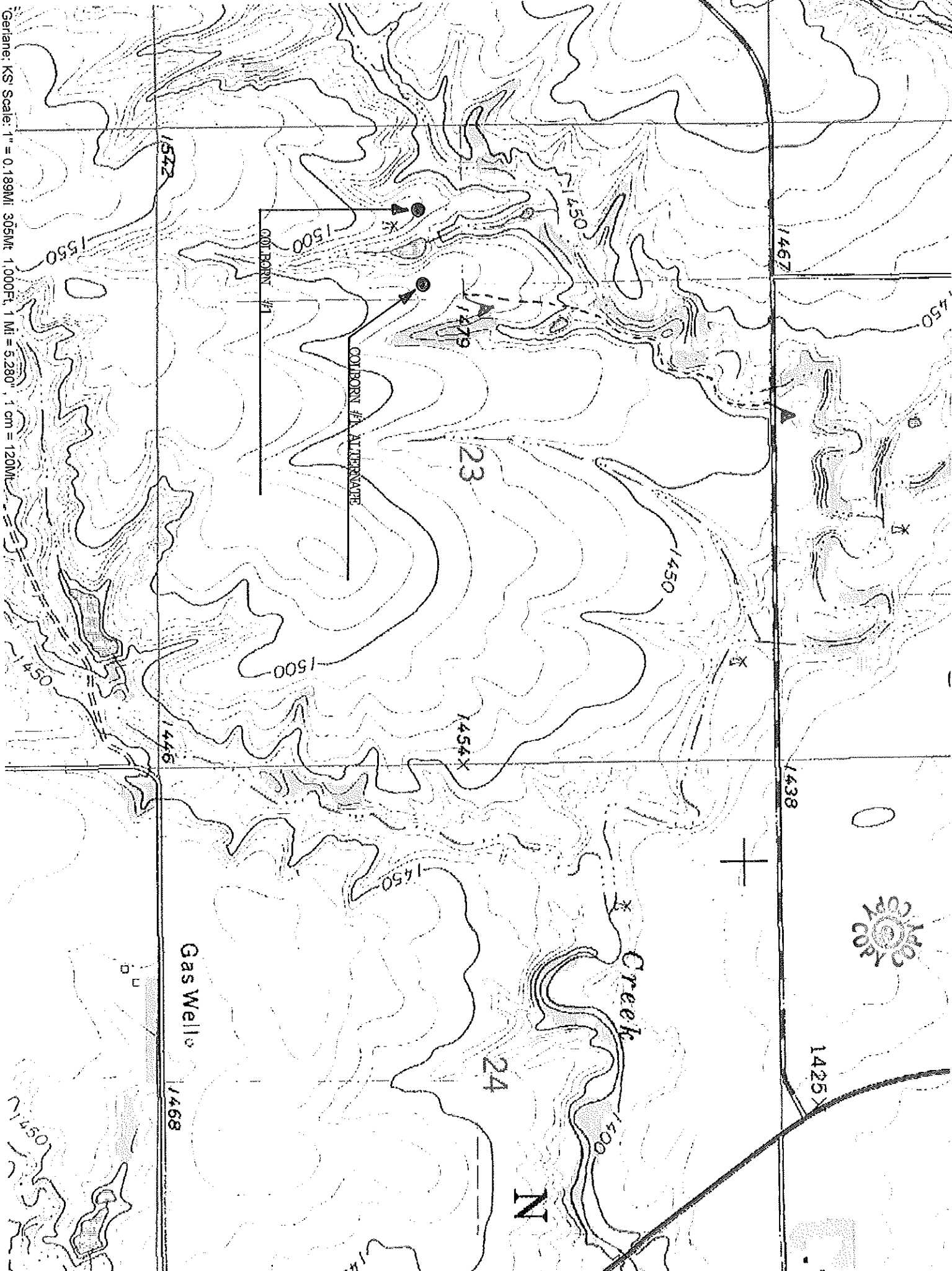
AUTHORIZED BY: Randy Newberry

SCALE: 1" = 1000'



DATE STAKED: 05/02/2012

Gerarone: KS Scale: 1" = 0.189MI 305Mt 1.000Ft, 1 Mi = 5,280', 1 cm = 120Mt



Gas Wells

COLBORN #1 ALTERNATE

COLBORN #1



N