

Jeff Christian

PETROLEUM GEOLOGIST

Wichita, Kansas

GEOLOGIST'S REPORT

DRILLING TIME AND SAMPLE LOG

OPERATOR MURFIN DRILLING COMPANY		ELEVATIONS	
LEASE ROMAR # 1-2		RE 2783'	
LOCATION 500' FSI & 1100' FEL		GL 2778'	
SEC. 2	TWSP. 5 S	RNG. 31 W	MEASUREMENTS FROM K.B.
COUNTY RAWLINS	STATE KANSAS	CASING RECORD	
FIELD ELNA	CONDUCTOR NONE		
API 15-152-206988	RIO NO. 8	Surface 8.6/6' @ 220'	W/ 179 SX
CONTRACTOR MURFIN	DRILLING STARTED 05/05/2012	COMPLETED 05/14/2012	Production 1 1/2" @ 440'
MUD DISP. AGED 2972'	MUD TYPE CHEMICAL		
DRILLING TIME - LEFT FROM 3465'	TO RTD		
SAMPLES SAVED FROM 3490'	TO RTD		
SAMPLES EXAMINED FROM 3490'	TO RTD		
GEOLOGICAL SUPERVISION FROM 3400'	TO RTD		

FORMATION NAME	LOG TOP	DATE	SAMPLE	DEPTH
ANHYDRITE	2512'	(-271)	2509'	(-274)
TOPEKA	3591'	(-808)	3590'	(-807)
HEEBNER	3758'	(-975)	3758'	(-975)
LANSING	3806'	(-1023)	3806'	(-1023)
STARK	3974'	(-1193)	3974'	(-1193)
BKC	4030'	(-1243)	4027'	(-1244)
PAWNEE	4139'	(-1356)	4133'	(-1350)
CHEROKEE	4222'	(-1439)	4220'	(-1437)
MISSISSIPPIAN	4347'	(-1564)	4342'	(-1559)
TOTAL DEPTH	4411'	(-1628)	4410'	(-1627)

DATE	7:00 AM DEPTH	REMARKS
5/5/12	MIRT	SPUD 1:45 pm
5/6/12	450'	DRLG. dev. 1/2 deg. @ 220'
5/7/12	1935'	DRLG.
5/8/12	2950'	DRLG.
5/9/12	3615'	DRLG.
5/10/12	3840'	TOH w/ DST # 1 dev. 3/4 deg.
5/11/12	3930'	DRLG.
5/12/12	4085'	DRLG.
5/13/12	4240'	DRLG.
5/14/12	4400'	DRLG. RTD 4410' @ 8:00 am dev. 3/4 deg.

Remarks

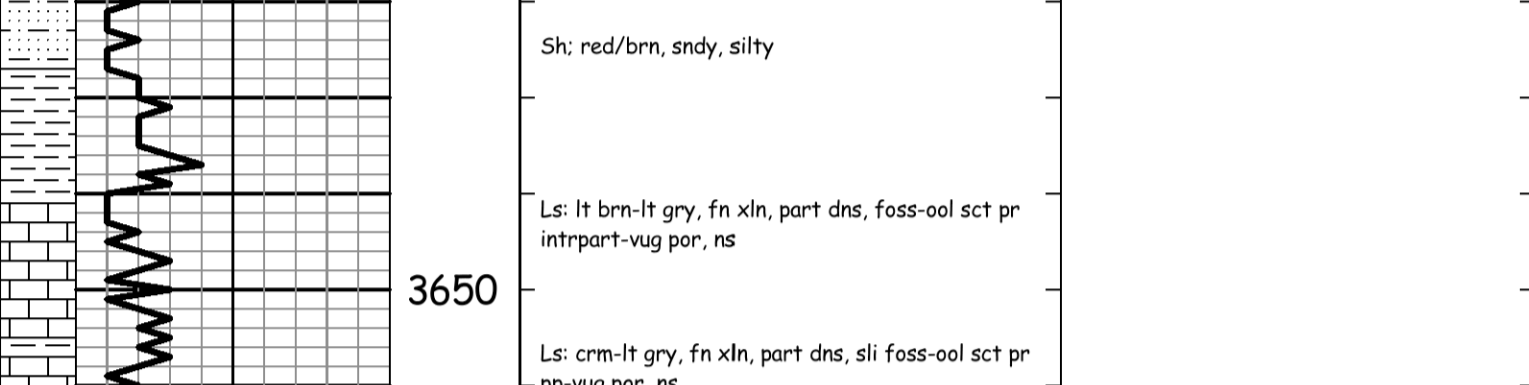
5 1/2" production casing run to further test the Toronto, Lansing / Kansas City and Cherokee formations.

Electric log measurements correlate 1' to 2' deep compared to rotary measurements. Sample tops adjusted to the electric log.

Samples deposited at the Kansas Geological Survey.

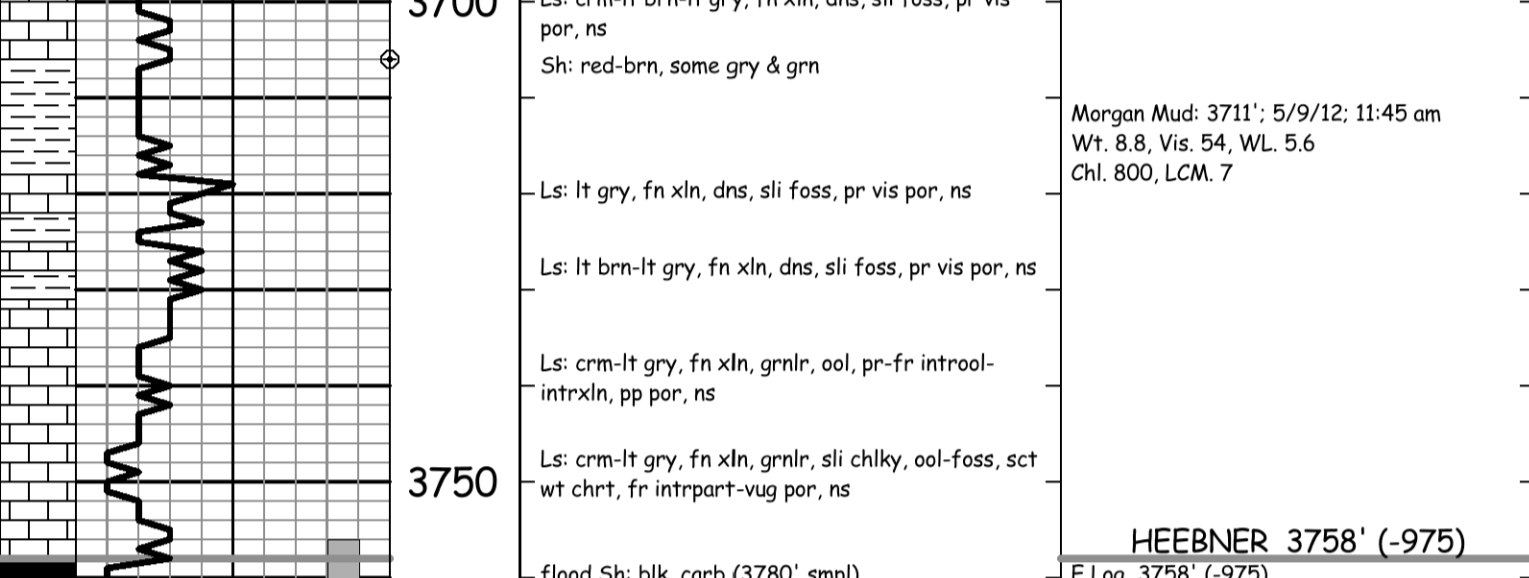
Respectfully Submitted,
Jeff Christian
Jeff Christian

LITHO	DRILL TIME (MIN-FT)	DEPTH	SAMPLE DESCRIPTIONS	REMARKS
-------	---------------------	-------	---------------------	---------

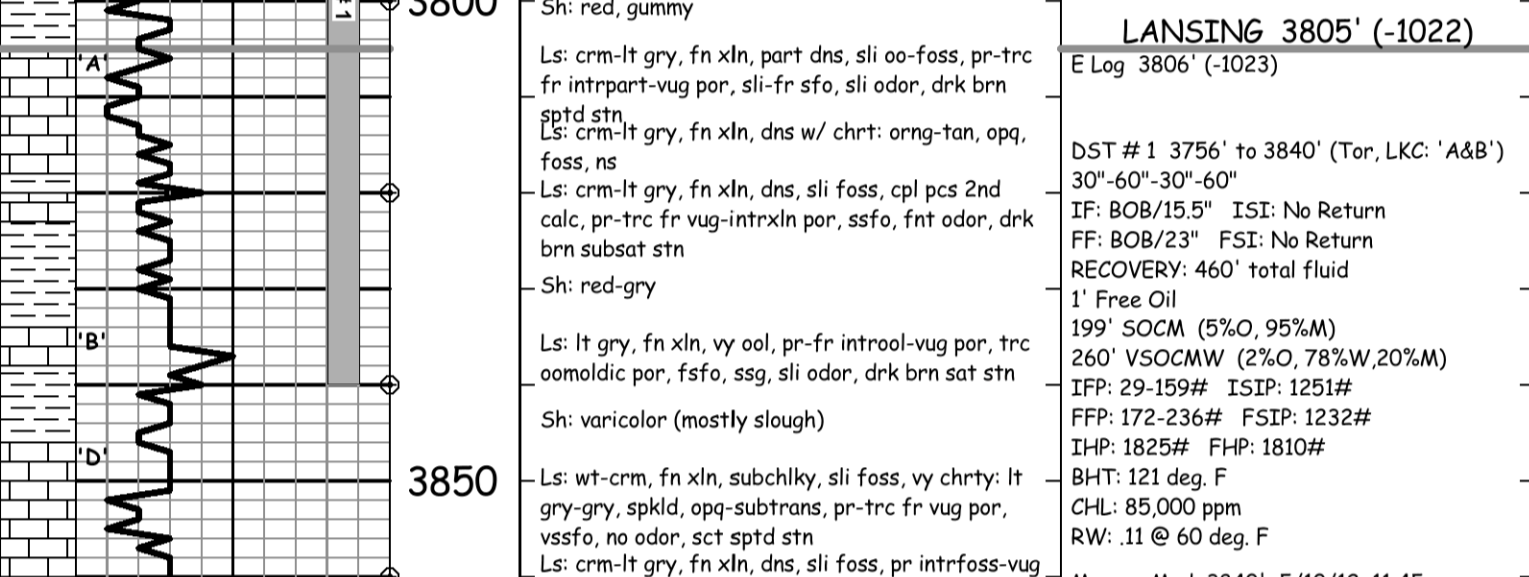


ANHYDRITE 2510' (+273)
E Log 2512' (-271)

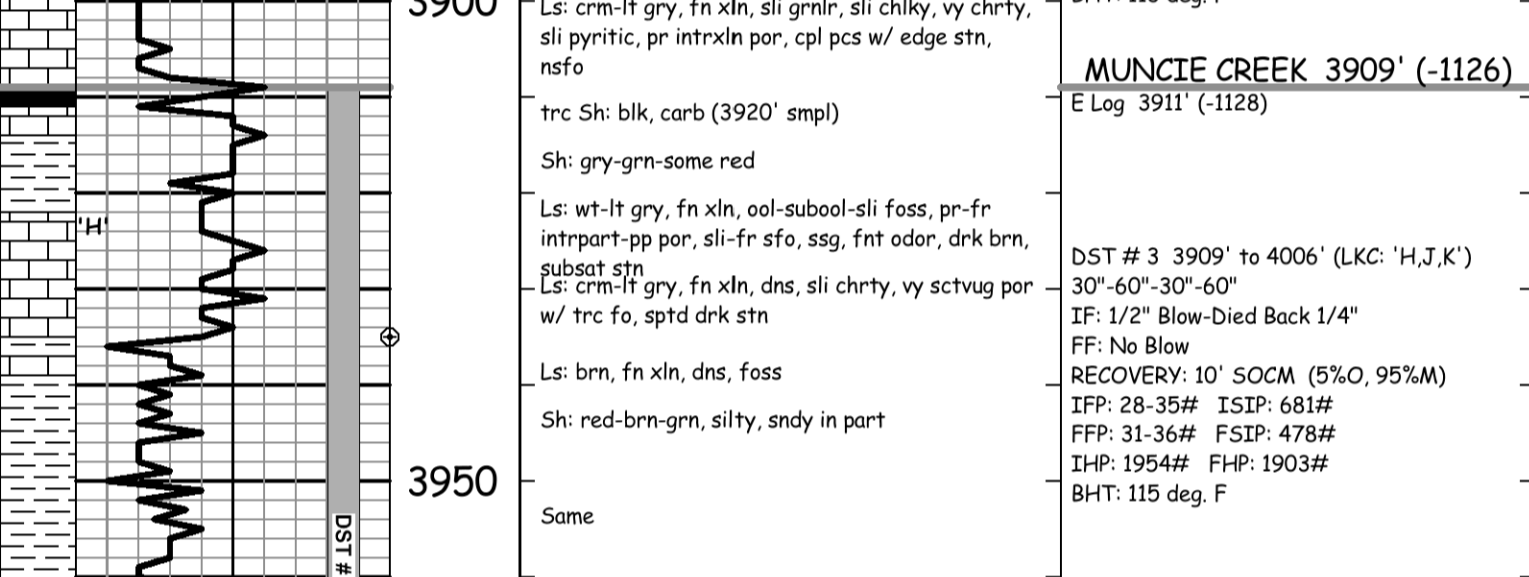
Base ANHYDRITE 2543' (-240)
E Log 2545' (-238)



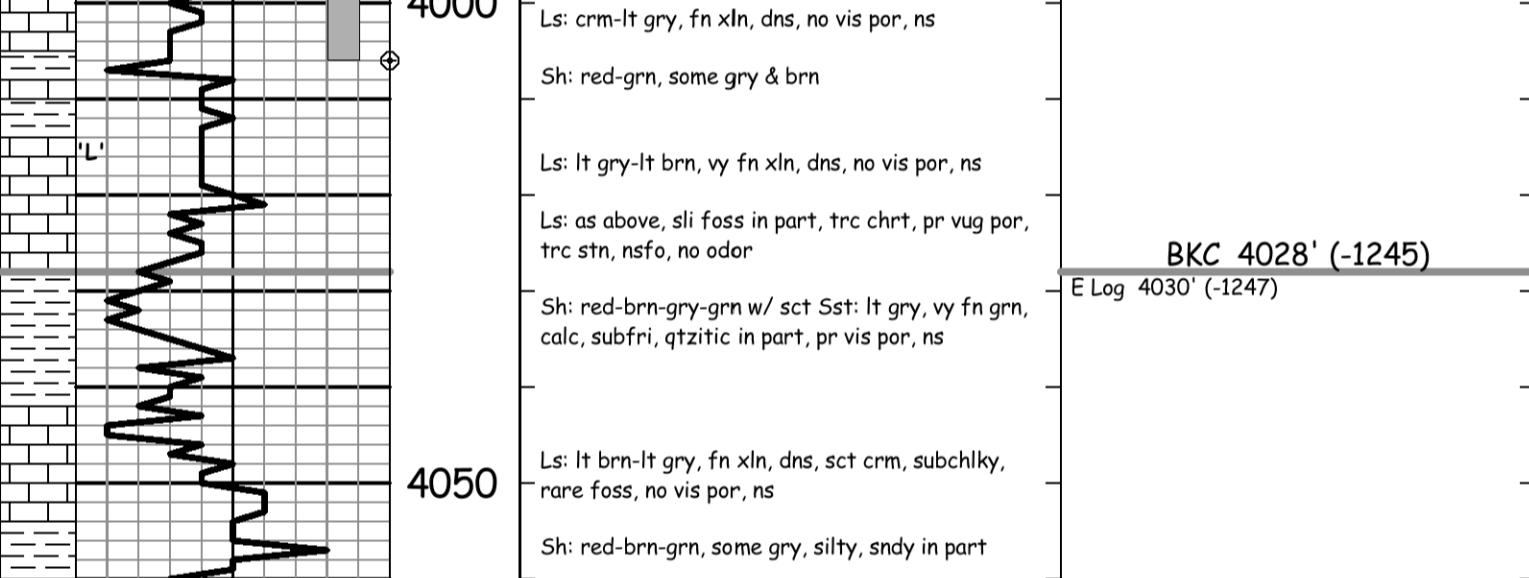
TOPEKA 3590' (-807)
E Log 3591' (-808)



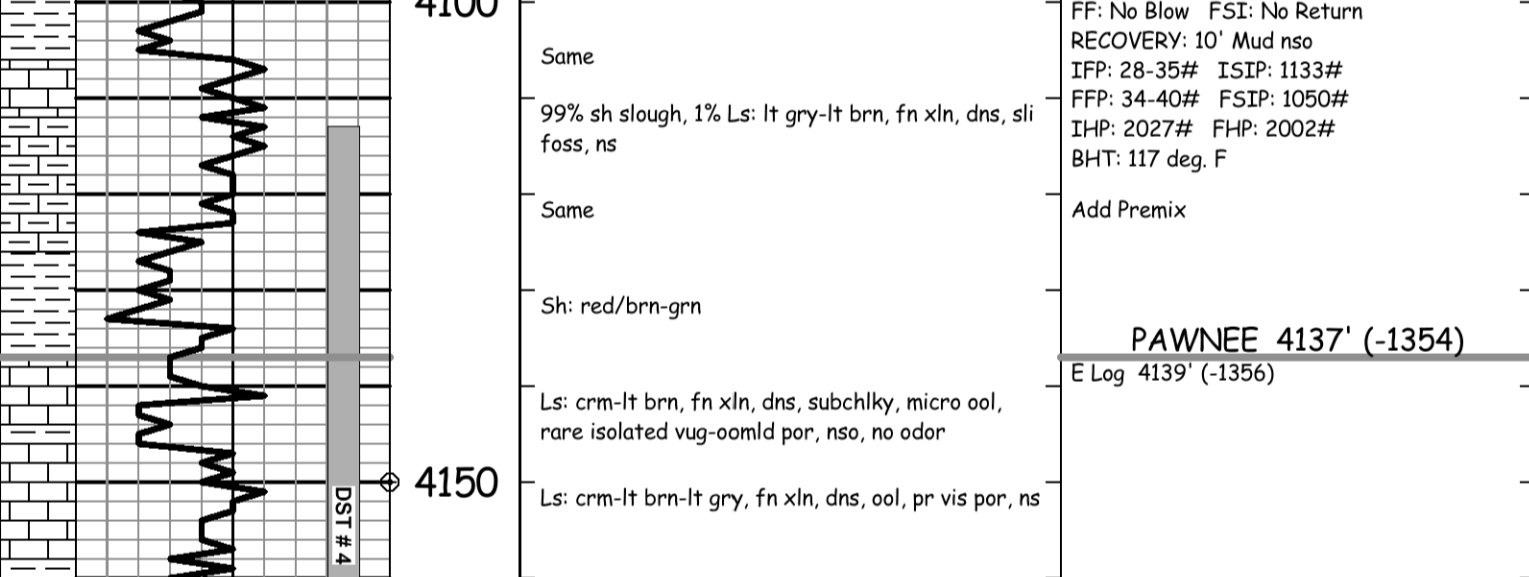
LANSING 3805' (-1022)
E Log 3806' (-1023)



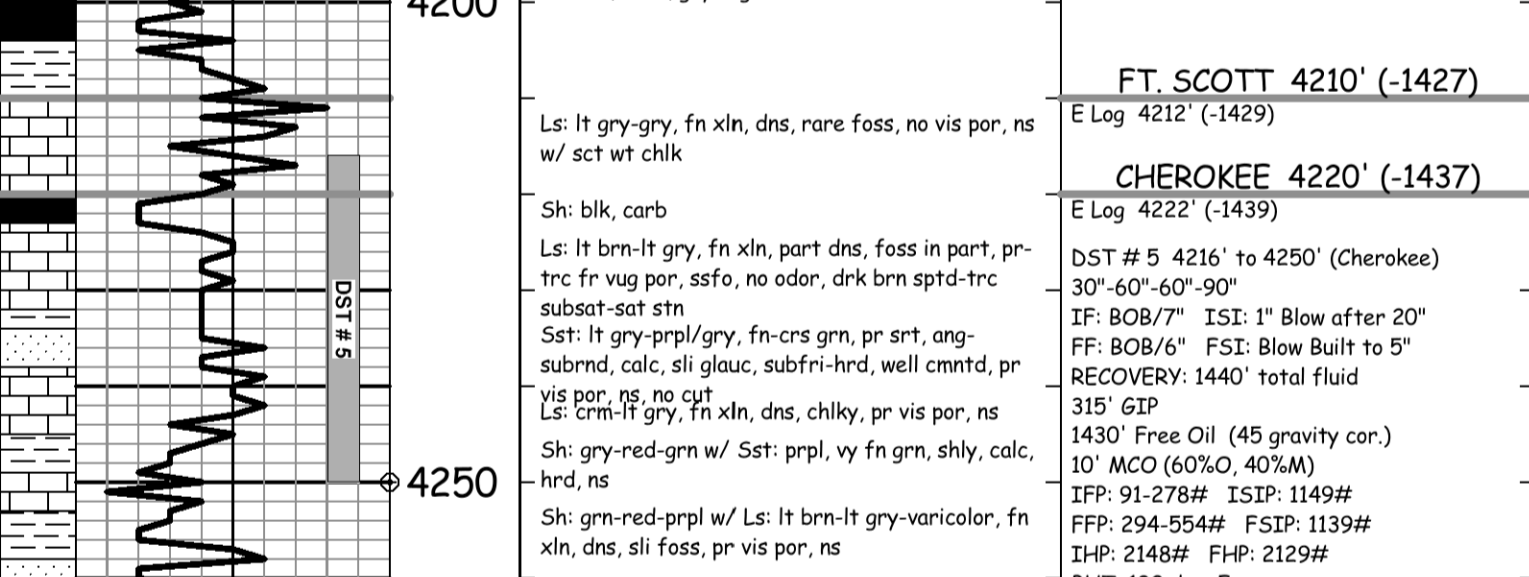
STARK 3974' (-1191)
E Log 3976' (-1193)



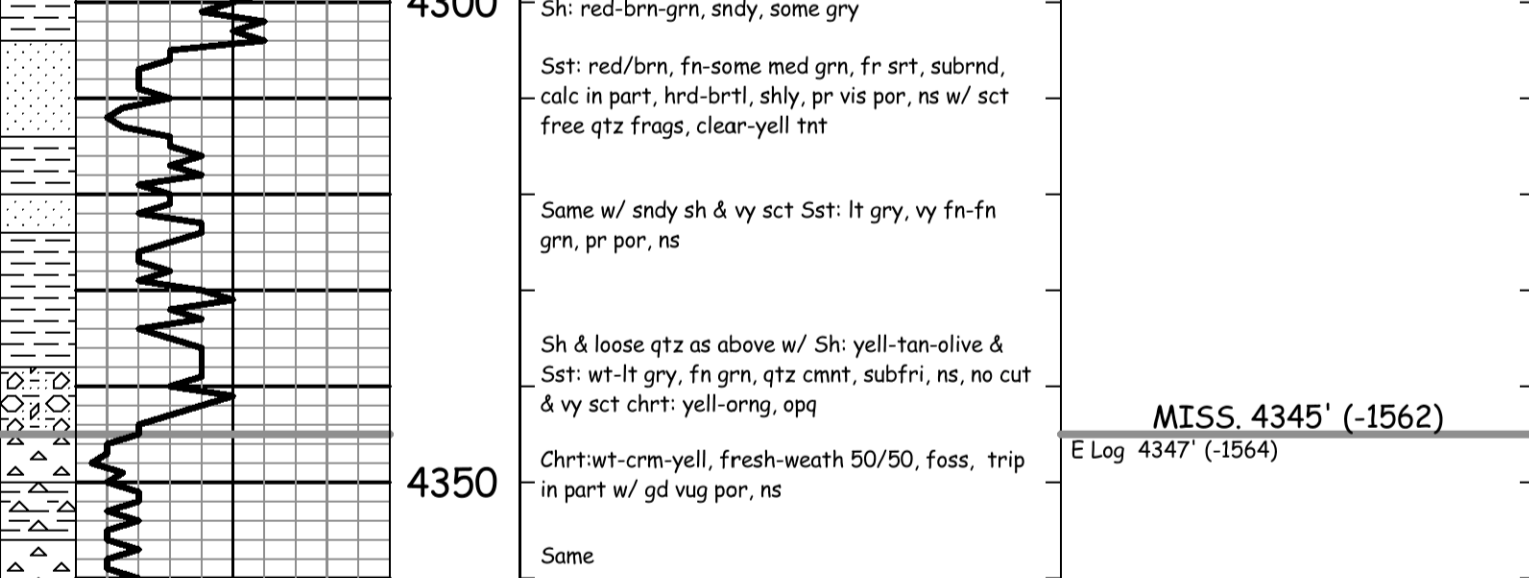
HEEBNER 3758' (-975)
E Log 3758' (-975)



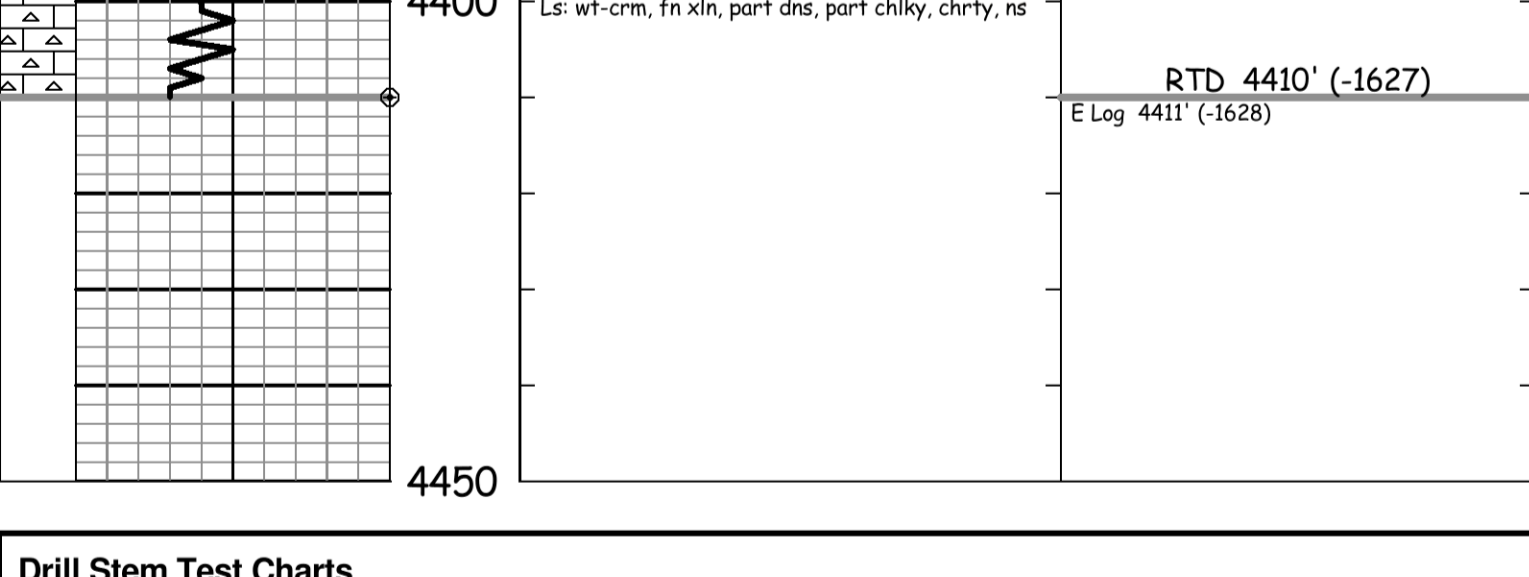
TORONTO 3790' (-1007)
E Log 3792' (-1009)



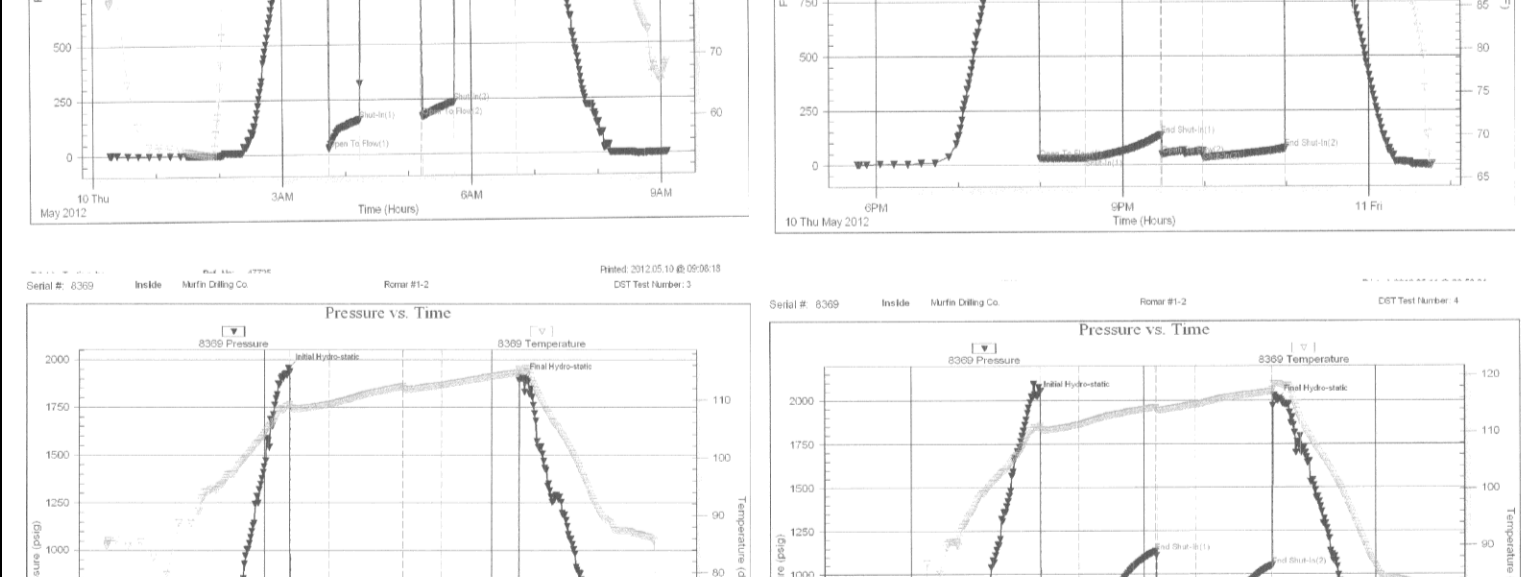
LANSING 3805' (-1022)
E Log 3806' (-1023)



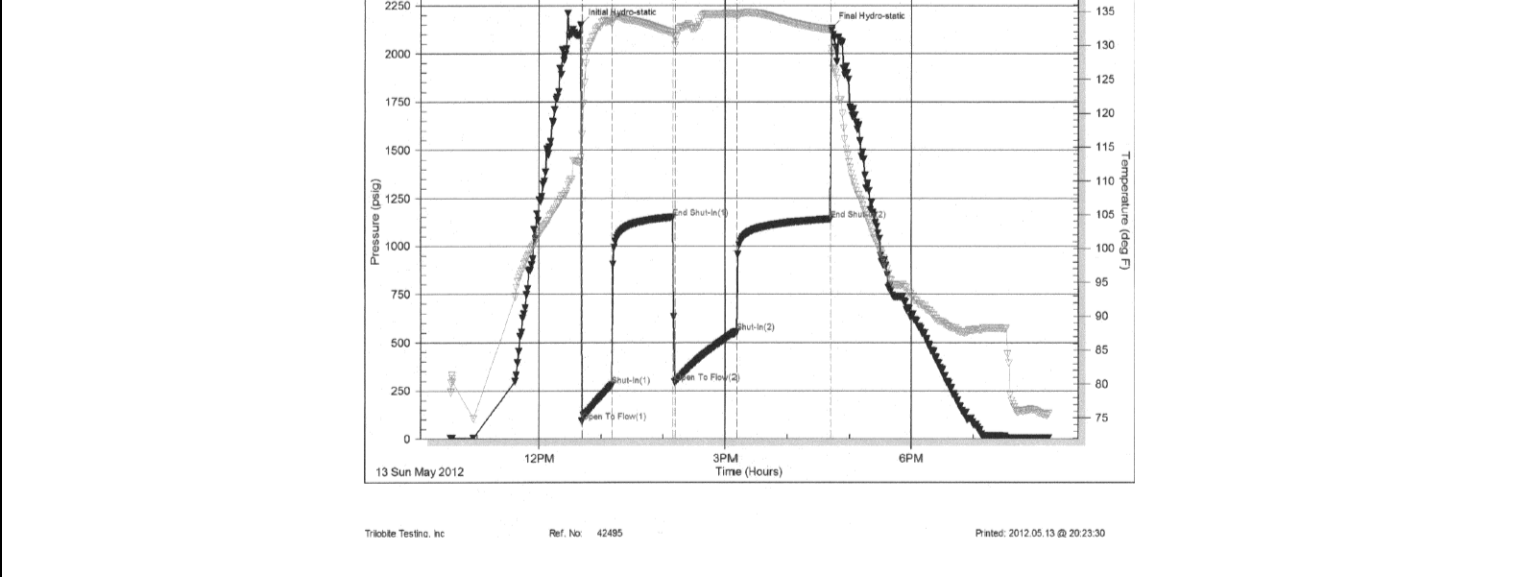
MUNCIE CREEK 3909' (-1126)
E Log 3911' (-1128)



STARK 3974' (-1191)
E Log 3976' (-1193)



BKC 4028' (-1245)
E Log 4030' (-1247)



MARMATON 4072' (-1289)
E Log 4074' (-1291)



PAWNEE 4137' (-1354)
E Log 4139' (-1356)



LWR PAWNEE 4177' (-1394)
E Log 4179' (-1396)



FT. SCOTT 4210' (-1427)
E Log 4212' (-1429)

CHEROKEE 4220' (-1437)
E Log 4222' (-1439)

MISS 4345' (-1562)
E Log 4347' (-1564)

RTD 4410' (-1627)
E Log 4411' (-1628)

4450'

Drill Stem Test Charts

