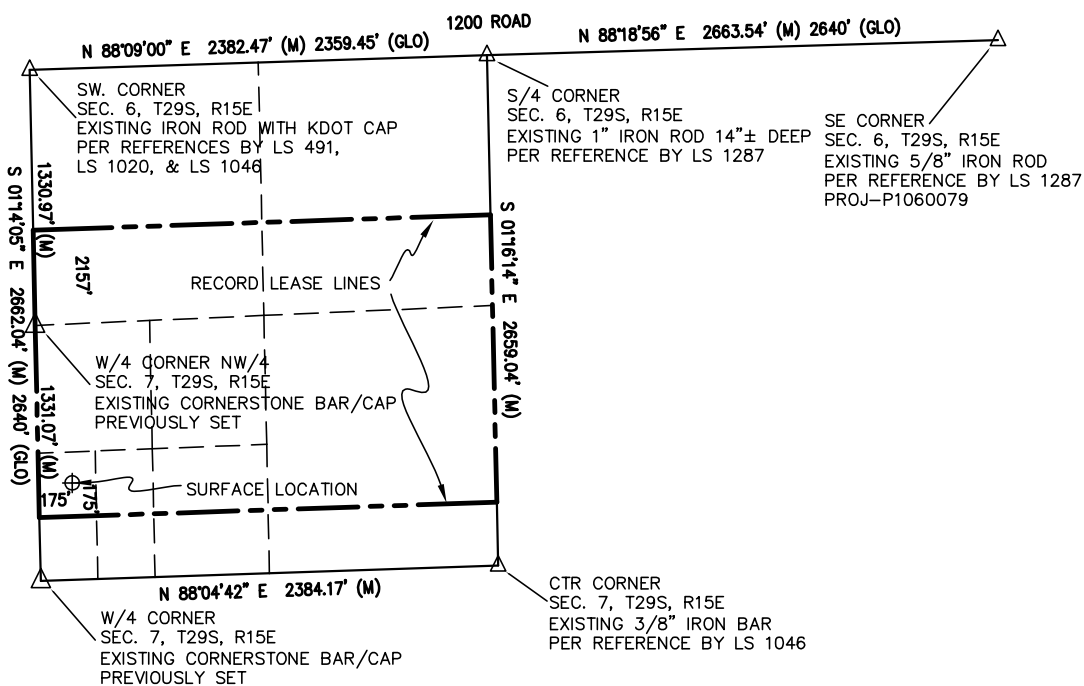


**WELL LOCATION -- Timmons
NW/4 SECTION 7,
TOWNSHIP 29 SOUTH, RANGE 15 EAST of the 6TH P.M.,
WILSON COUNTY, KANSAS
prepared for Wilson County Holdings, LLC
August 6, 2012**



PROPOSED WELL LOCATION
WILSON COUNTY HOLDINGS, LLC
 Timmons Surface
 2157 ft. from the North Line & 175 ft. from the West Line
 of the NW 1/4 of Section 7, Township 29 South, Range 15 East
 of the 6th Principal Meridian, Wilson County, Kansas
 Ground Elevation at staked location = 916' MSL
 Latitude N 37° 32' 18.672" = 37.53852°
 Longitude W 95° 48' 55.171" = 95.81533°
 NW/4 SW/4 SW/4 NW/4 Sec. 7-29S-15E



SURVEYOR'S CERTIFICATION:

I, R. Gary Walker, a duly licensed Land Surveyor in the State of Kansas, do hereby certify that the above described well location was staked on the ground, under my supervision as shown herein on August 3, 2012. This plat does not, in any way represent a "Boundary Survey."

R. Gary Walker, L.S. No. 1066

**CORNERSTONE REGIONAL
SURVEYING, L.L.C.**
 1921 North Penn
 Independence, Kansas 67301
 Ph: 620-331-6767

<i>DRAWN BY:</i> RGW	<i>DATE:</i> AUGUST 6, 2012
<i>CHECKED BY:</i> RGW	<i>DRAWING NO.:</i> 1204075(Sec 7)
<i>JOB NO.:</i> 1-1204075-K	<i>SHEET</i> 1 <i>OF</i> 1