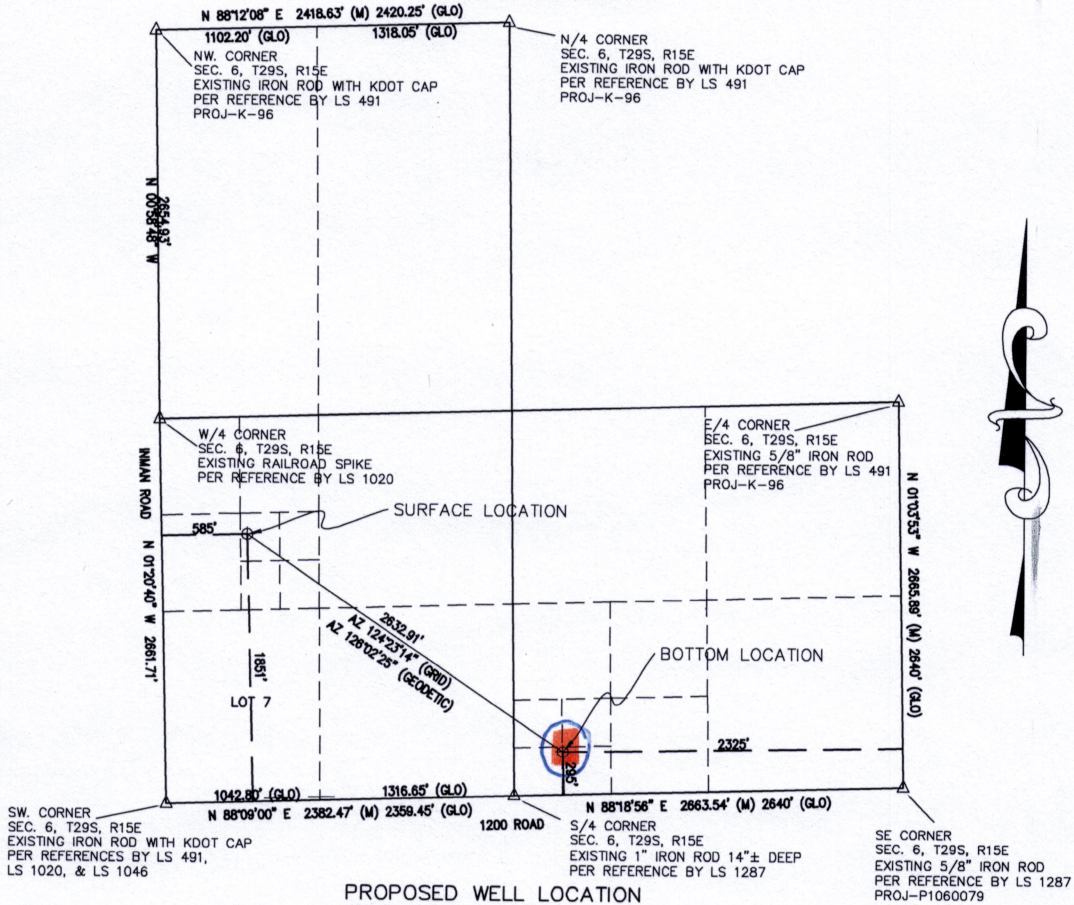
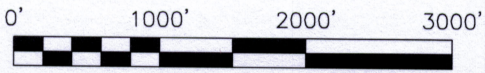


WELL LOCATIONS -- TaylorHendry_1_Bart
S/2 SECTION 6,
TOWNSHIP 29 SOUTH, RANGE 15 EAST of the 6TH P.M.,
WILSON COUNTY, KANSAS
 prepared for Wilson County Holdings, LLC
 July 30, 2012



PROPOSED WELL LOCATION
 WILSON COUNTY HOLDINGS, LLC
 TaylorHendry_1_Bart Surface
 1851 ft. from the South Line & 585 ft. from the West Line
 of the SW 1/4 of Section 6, Township 29 South, Range 15 East
 of the 6th Principal Meridian, Wilson County, Kansas
 Ground Elevation at staked location = 894' MSL
 Latitude N 37° 32' 58.310" = 37.54953°
 Longitude W 95° 48' 49.764" = 95.81382°
 NW/4 SE/4 NW/4 SW/4 Sec. 6-29S-15E

TaylorHendry_1_Bart Bottom
 295 ft. from the South Line & 2325 ft. from the East Line
 of the SE 1/4 of Section 6, Township 29 South, Range 15 East
 of the 6th Principal Meridian, Wilson County, Kansas
 Ground Elevation at staked location = 935' MSL
 Latitude N 37° 32' 42.994" = 37.54528°
 Longitude W 95° 48' 23.328" = 95.80648°
 SE/4 SW/4 SW/4 SE/4 Sec. 6-29S-15E



SURVEYOR'S CERTIFICATION:

I, R. Gary Walker, a duly licensed Land Surveyor in the State of Kansas, do hereby certify that the above described well location was staked on the ground, under my supervision as shown herein on July 27, 2012. This plat does not, in any way represent a "Boundary Survey."

R. Gary Walker, L.S. No. 1066

CORNERSTONE REGIONAL SURVEYING, L.L.C.	
1921 North Penn Independence, Kansas 67301 Ph: 620-331-6767	
DRAWN BY: <i>RGW</i>	DATE: <i>JULY 30 2012</i>
CHECKED BY: <i>RGW</i>	DRAWING NO.: <i>1204075(Sec6)</i>
JOB NO.: <i>1-1204075-K</i>	SHEET <i>1</i> OF <i>1</i>