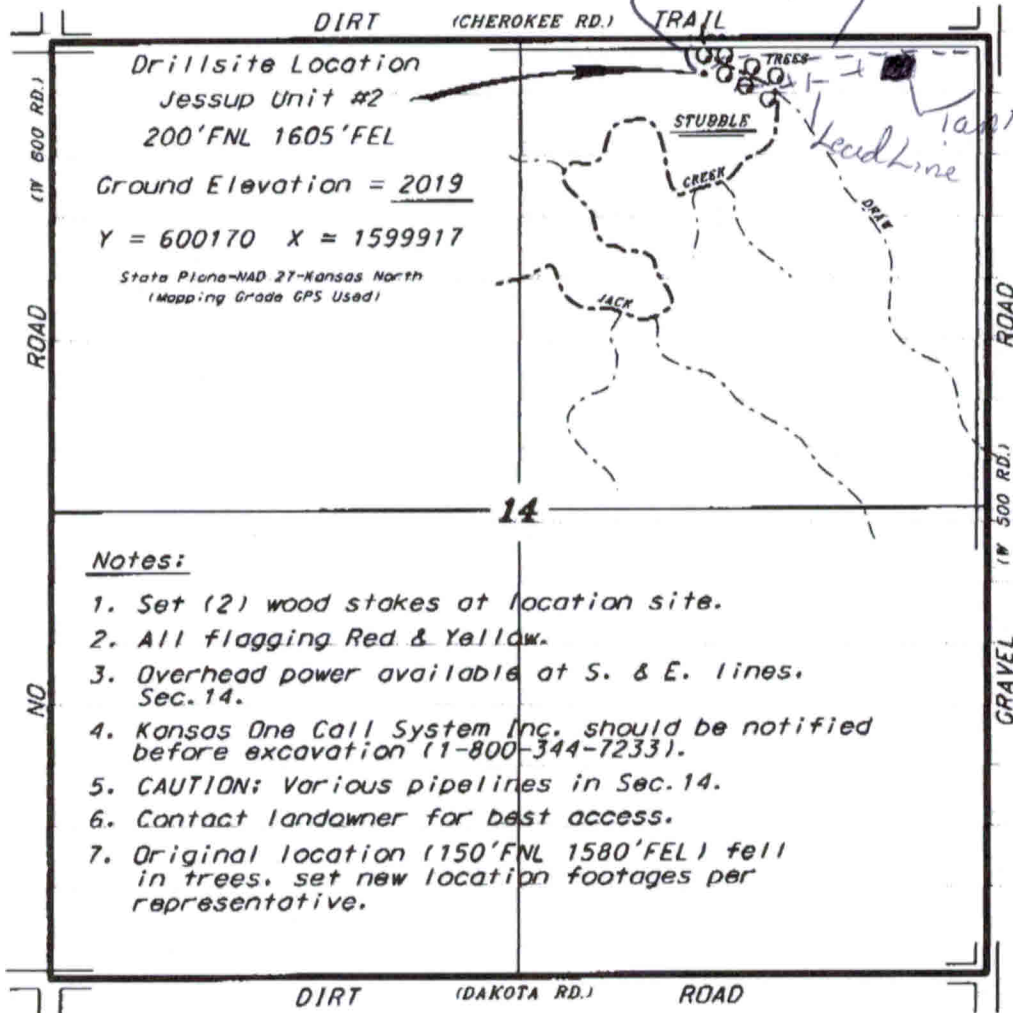


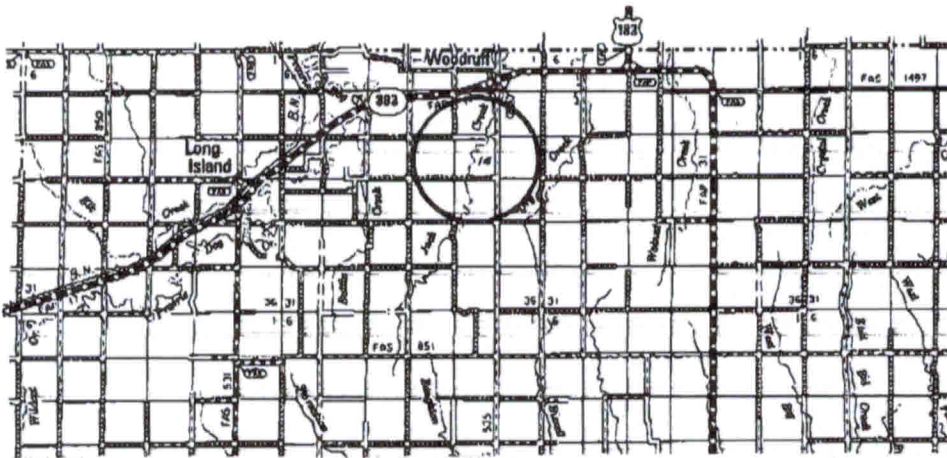
BACH OIL PRODUCTION, INC.
 JESSUP LEASE
 NE. 1/4, SECTION 14, T15, R19W
 PHILLIPS COUNTY, KANSAS



Notes:

1. Set (2) wood stakes at location site.
2. All flagging Red & Yellow.
3. Overhead power available at S. & E. lines. Sec. 14.
4. Kansas One Call System Inc. should be notified before excavation (1-800-344-7233).
5. CAUTION: Various pipelines in Sec. 14.
6. Contact landowner for best access.
7. Original location (150' FNL 1580' FEL) fell in trees. set new location footages per representative.

Ingress and egress to location as shown on this plat is for usage only and may not be legally opened for public use. Contact landowner. Tenant and county road department for access.



• Controlling data is based upon the best maps and photographs available to us and upon a regular section of land containing 640 acres.
 • Approximate section lines were determined using the normal standards of care of oilfield surveyors practicing in the state of Kansas. The section corners, which establish the precise section lines, were not necessarily located, and the exact location of the drillsite location in the section is not guaranteed; therefore, the operator securing this service and accepting this plat and all other services relating thereto agrees to hold Central Kansas Oilfield Services, Inc., its officers and employees harmless from all claims, costs and expenses and joint entities released from any liability from incidental or consequential damages.
 • Elevations derived from National Geodetic Vertical Datum.

Date August 24, 2012