

PATRICK J. DEENIHAN

Licensed Geologist No. 234

(316) 640-5611

Wichita, KS 67226

4502 Spyclass Circle

GEOLOGIST'S REPORT DRILLING TIME AND SAMPLE LOG

OPERATOR STANWSON EXPLORATION Co., Inc

LEASE JAMES #1-26

FIELD UNNAMED

LOCATION 1040' FNL & 1015' FEL

SEC. 26 TWP. 10 S RGE. 34 W

COUNTY THOMAS STATE KANSAS

CONTRACTOR W.W. Drilling, LLC Rig # 8

DATE 7-11-12 COMP. 7-19-12

RTD 4820' LOG TD 4821'

SAMPLES SAVED FROM 4000' TO T.D.

DRILLING TIME KEPT FROM 4000' TO T.D.

SAMPLES EXAMINED FROM 4000' TO T.D.

GEOLOGICAL SUPERVISION FROM 3800' TO T.D.

LOG UP 3392' TYPE LOG CHEMICAL

LOG # 15-193-20854-00-00

FORMATION	TOP	LOG	DATE	TOP	SAMPLE	STRUCT.
					DEPTH	COVER.
ANHYDRITE	4668	(+502)	2670	(+500)		+4
BASE ANHYDRITE	2093	(-477)	2696	(+474)		+6
HELDNER SHALE	4054	(-888)	4053	(-888)		+3
LANSING	4090	(-923)	4092	(-922)		+3
MURKIN CREEK	4236	(-1066)	4237	(-1067)		+1
STARKE SHALE	4324	(-1154)	4322	(-1152)		+3
ARK	4385	(-1215)	4382	(-1212)		+1
MARMATON	4412	(-1242)	4409	(-1239)		+1
PRIME	4515	(-1345)	4515	(-1345)		+3
MYRICK STATION	4550	(-1380)	4550	(-1380)		+3
UPPER CHER.	4563	(-1393)	4563	(-1392)		+3
LOWER CHER.	4597	(-1427)	4597	(-1427)		+3
JOHNSON ZONE	4640	(-1470)	4639	(-1469)		+3
MUSKIEPPIAN	4718	(-1548)	4715	(-1545)		+2

ELEVATION

KB 3170'

DF 3165'

Measurements Are All From KB (3170')

CASING RECORD

SURFACE 8 5/8" 307'

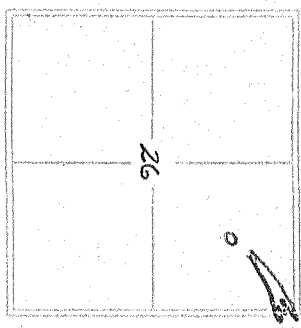
185 SRS (3% CC, 2% GEL)

PRODUCTION 4 1/2" CS G

To T.D.

WELL LOG SURVEYS

W/FASTER FORD -
CND, OZ, HIGH RES, Micro
& Seismic



REMARKS AFTER SAMPLE EXAMINATION, DST RESULTS & LOG EVALUATION, IT WAS RECOMMENDED THAT THE JAMES 1-26 - BE FURTHER TESTED THROUGH PRODUCTION CSG - JOHNSON - MYRICK ETC.

RESPECTFULLY SUBMITTED

BY Patrick J. Deenihan
PETROLEUM GEOLOGIST

LEGEND

Anhydrite	Salt	Sandstone	Shale	Carbonate	Limestone	Ool. Lime	Chert	Dolomite

SCALE " = 100'

DRILLING TIME	DEPTH	SAMPLE DESCRIPTION	REMARKS
0	2600	7:00 AM DEPTH	
5			
10			
15			
20			
25			
30			
35			
40			
45			
50			
55			
60			
65			
70			
75			
80			
85			
90			
95			
100			

7-11-12-MIRU ESPUD

7-12-12-775'
7-13-12-2700'
7-14-12-3675'
7-15-12-4272'
7-16-12-4846'
7-17-12-4570'
7-18-12-4684'
7-19-12-4820'

50

ANHYDRITE
2670 (+500)

BASE / ANHYDRITE
2696 (+474)

2700

MUD-Co / SERVICE MUD, INC.
@ 2486'
VIS: 30 WT: 9.4 WL: NC
CHL: 5,000 LCM: TRC

DISPLACED @ 3392'

MUD-Co / SERVICE MUD, INC.
@ 3543'
VIS: 55 WT: 8.9 WL: 7.2
CHL: 4,500 LCM: 2#

50

4000

SH. DARK GRY TO BLACK CARB

LS. WHT-CRM-SING - FSSG, FIN-KIN
SUB-IRACLY

HEEBNER SHALE
4053 (-883)

LANSING
4092 (-922)

MUNCIE CREEK
4237 (-1067)

SH., VARI-COLOR

LS. WHT CRM - SING FSSL TO
SLI-CHALKY - P-FN-XLN

SH., BLACK CARB

SH., VARI-COLOR

SH., VARI-COLOR

LS., WHT CRM - SING - FSSL TO SLI -
DOL - NO SHOW

LS., TAN W/TH LARGE DOL & CRIN -
SHALLOW PP - TO SLI V. V. OF NASH
SH., GRAY, GRN, BRN - DRG - ARG IL

LS. WHT CRM, TAN - SING / MOTT
FSSL - FN - XLN, SLI - CHERTY -
NO SHOW

LS., WHT CRM - SING - FN - XLN FSSL -
SLI - CHERTY - SUB CHALKY

SH., SLI VARI-COLOR

LS., WHT CRM - SING - FSSL, P-FN-XLN
WASHES CHALKY

LS., CRM, GRAY - SING - FSSL, FN-XLN
NO SHOW

SH., DK GRAY TO SLI VARI-COLOR
ABUND ORANGE

LS., CRM, GRAY - SING / MOTT - FN - XLN
FSSL - NO SHOW

LS., A) A ABUND - PYRITE MICRO -
XLN - MICRO - FSSL SLI - CHALKY
NO SHOW

SH., DK GRAY & ORANGE, TRC OF BLACK
CARB.

LS., WHT CRM, GRAY - SING / SLI - MOTT
WASHES CHALKY - NO FLUR -
NO CUT - NO ODR

LS., A) A - NO SHOW - NO STAIN IN DRY -
V - FSSL - TO MED DOL

VIS: 56 WT: 9.2 WL: 9.4
CHL: 3000 LCM: 2⁺

- CFS -
4200

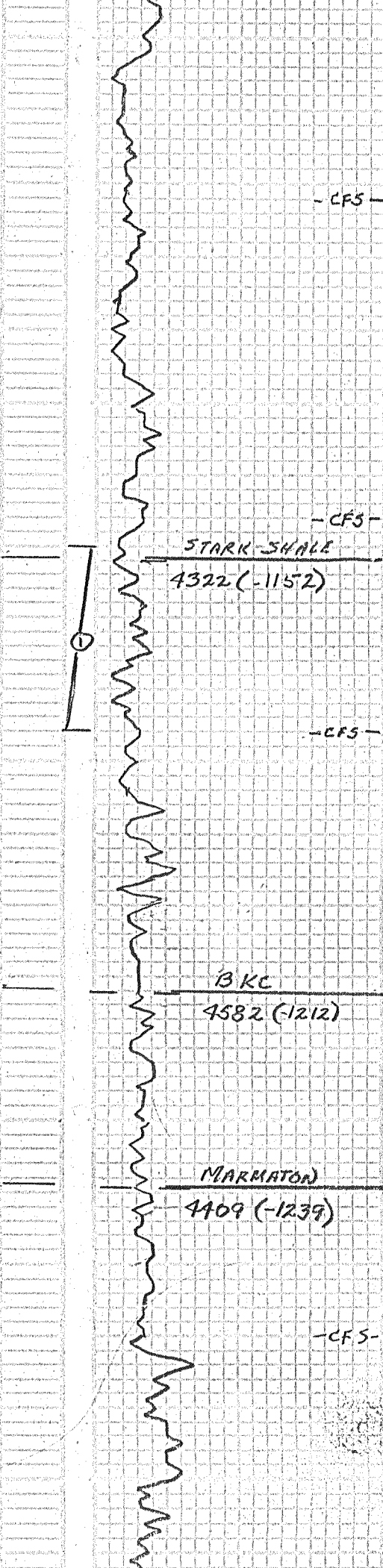
SH., VARI-COLOR

LS., CRM - GRAY - SING / MOTT V - CHALKY
SLI - FSSL, TRC OF CHERTY LS -
FRESH WHT - GRAY CHERT - PAIR
SHOW OF BLACK TO BRN L₂ -
NO ODR, NO FLUR, NO CUT

LS., WHT CRM, GRAY SING - FSSL P-FN -
XLN - SAMPLE WASHES CHALKY -
NO STAIN IN DRY

SH., VARI-COLOR

SH., BLACK CARB



LS., WHT. GR. - SING. / MOTT - FN - XLN -
FSSL, No VIS P
SH., VARI-COLOR

LS., CRM, TAN, GR. SING - FN - XLN -
FSSL - SUB CHALKY - BLACK DEAD
OIL STN IN WET, NO STAIN IN
DRYS, NO FLUR - NO ODR.

LS., A/A INCR IN CHALK-DEGR.
IN SHOW

-CF5-

SH., BLACK CARB

SH., VARI-COLOR

LS., WHT, CRM - SING - FN - XLN TO
TRC OF INTERKLING ON EDGES
V-P - TOP - FLUR ON EDGES OF
A FEW PCS, TRC OF BLACK F-D -
NO ODR, F-CUT

4300 SH., VARI-COLOR, ABUND ORANGE-
ARGIL

LS., CRM-TAN - SING TO SLI-MOTT -
FN-XLN - CHALKY - BLACK TARRY
OIL STN - NO ODR NO FLUR.

-CF5-

STARK SHALE
4322 (-1152)

SH., ABUND BLACK CARB

SH., ABUND VARI-COLOR

LS., CRM-TAN - SING - FN - XLN TO FSSL, ODR
IN PART - FSSL - 19 FLUR - ODR SHEET
ODR - SHALLOW VUG TO INTER - XLN
TO INTER.

-CF5-

LS., A/A

DST #1 (4322' - 4346')	
30" 45" - 25" - 90"	
IF: VAL: NO RETURN	
FF: NO BLEND: NO RETURN	
REC: 70' MUD	
VHP: 2271	FHP: 2202
IFP: 27-39	FFP: 42-60
LSIP: 1200	FSIP: 1199
BHT: 123	CHL: 800 (SYSTEM)

STRAP: 9.3 LONG TO BOARD
VIS: 66 WT: 9.3 WL: 10.4
CAL: 10.4 LCM: 2"

SH., BLACK CARB

SH., VARI-COLOR

LS., WHT, CRM LT GR. SING - CHALKY
FN - XLN, SLI - FSSL - TRC OF BLACK
DEAD OIL STN, NO FLUR, NO ODR

BKC
4582 (-1212)

SH., ABUND VARI-COLOR

SH., VARI-COLOR

LS., WHT, CRM, LT GR. - SING - V - FN - XLN
SUB CHALKY, CRM - FRESH CHERT
NO SHOW

4400

SH., VARI-COLOR

LS., CRM-TAN - SING / SLI-MOTT - V - FN - XLN
TO SUB CHALKY TRC OF BLACK GILSONITE
STN ON EDGES, NO FLUR NO ODR

SH., VARI-COLOR

LS., WHT, CRM - SING / MOTT - V - FN - XLN
SLI - FSSL, SLI - CHERT NO SHOW

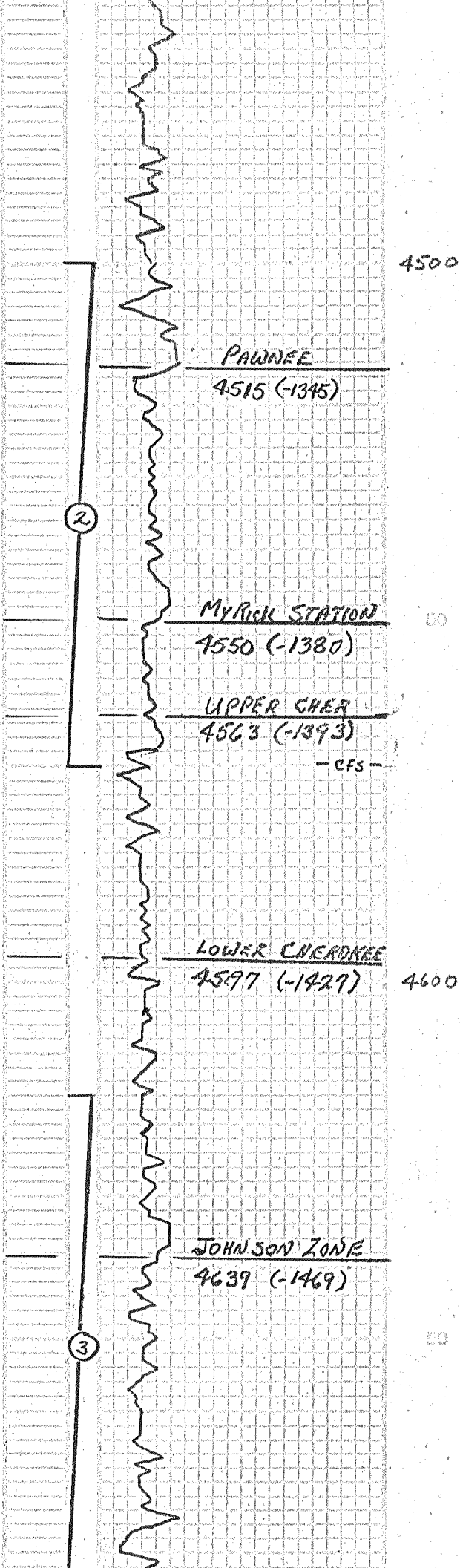
-CF5-

LS., CRM-TAN - SING - SUB CHALKY
CHERTY - GR. FRESH NO SHOW

SH., ABUND VARI-COLORED

SH., BLACK CARB

LS., CRM - SING - FN - XLN - SUB - CHALKY



LS., A)A.

LS., A)A W) VARI-COLORED SAND

4500

SH., BLACK CARB

LS., CRM-GRY-SING/MOTT-TRC OF LFO., NO ODOR SLI-FLUOR

LS., CRM-GRY-SING To MOTT. ABUND FRESH SLI-FSSL & -DEAD OIL STN NO ODOR-NO FLUOR.

DST # 2 (4500'-4576')
30"-20"-20"-20"
IF: SURF BLOW DIED IN 28" No Ret.
FF: No BLOW: No RETURN
REC: 5' MUD
INP: 2292 FNP: 2169
IFP: 16-20 FFP: 20-21
ISIP: 266 FSIP: 172
BHT: 121° CHL: 4800

LS., CRM-GRY-SING-MICRO-XLN, FSSL LARGE OIL-TRC OF V.LTFO NO ODOR BRIGHT WHITE FLUOR-TRC OF BRN OIL, RARE GAS BUBBLES

SH., BLACK CARB

LS., CRM, LT GRAY-SING/MOTT-V FN-XLN FRESH LT GRAY CHERT-NO SHOW

Vis: 59 WT: 9.4 WL: 96
CHL: 4800 LCM: 24

LS., A)A SUB CHALKY TO CHALKY W) DEPTH-NO SHOW

LOWER CHERDREE

4597 (-1427)

4600

SH., BLACK CARB.

BR, WHT CRM GRAY-SING-FN-XLN CHERT 2 SUB CHALKY-TRC OF P-FSSL POR NO SHOW

SH., DK GRAY TO VAR. COLOR

LS., GRAY-SING DANSE XLN-NO SHOW

SH., BLACK SLI CARB, DK GRAY ARGIL

DST # 3 (4616'-4684')
30"-45"-45"-90"
IF: 1/4" BLOW-NO RETURN
FF: No BLOW-NO RETURN
REC: 2' GD (5% GAS, 95% OIL) 63' OCM (5% OIL-95% M)
INP: 2448 FNP: 2385
IFP: 35-55 FFP: 58-72
ISIP: 426 FSIP: 423
BHT: 129° CHL: 4880

SH., DK GRAY To VARI-COLOR

LS., CRM-GRY-FN-XLN, SLI-FSSL, SUB CHALKY-GSLEGO, STRONG SWEET ODOOR F-SCATT FLUOR.

LS., CRM-GRY-SING-FN-XLN-SLI CHERTY. SUB CHALKY-V-P-ODOR P-EDGE STN, P-FLUOR-LOOKS TITE

LS., CRM-GRY-FN-XLN, SLI-INTER-XLN F-GS LFO. ABUND BRN OIL BEAD FLOATING IN FRAY-V-STRONG ODOOR GOOD FLUOR-SLI GRASSY Upon CRUSHING

LS., A)A.

SH., ABUND GRAY-ARGIL.

JOHNSON ZONE

4639 (-1469)

3

SH. BLACK CARB

VIS: 59 WT: 9.4 WL: 10.4
CHL: 5400 LCM: 24

SH. ABOVE VARI COLOR - TRC OF
BARREN FN-GRN SS CLUSTERS -
GLAUCONIOUS TO PYRITIC;

4700

SH, A7A. MUSTARD, GRN, PURPLE
ORANGE, BLACK & GRYS.

SH. & SLI SAND A7A - No SHOW

MISSISSIPPIAN

4715 (-1545)

LS, WHT CRM LT GRY - MICRO-FIN
SUB CHALKY - STILL CARRY SH
A7A - No SHOW

LS, A7A SLI - ENERGY - FRESH No
SHOW

50

SH, VARI-COLOR

LS, WHT CRM GRY - SING - MICRO-VLA
CHALKY - No SHOW

LS, A7A - No SHOW

4800

LS, A7A - No SHOW - SLI SANDY

- RTD

RTD 4820' @ 4:30PM
7-18-12

50

50

DRILLING TIME
0 5 10 15

DEPTH

SAMPLE DESCRIPTION

REMARKS