



DRILL STEM TEST REPORT

Prepared For: **RJM Company**

Po Box 256 Claflin Kansas 67525

ATTN: Jim Musgrove

Robl Farms #1

18-19s-11w

Start Date: 2012.06.20 @ 09:41:00

End Date: 2012.06.20 @ 15:00:30

Job Ticket #: 17689 DST #: 7

Superior Testers Enterprises LLC
PO Box 138 Great Bend KS 67530
1-800-792-6902

Printed: 2012.06.20 @ 13:18:35



DRILL STEM TEST REPORT

RJM Company
 Po Box 256 Claflin Kansas 67525
 ATTN: Jim Musgrove

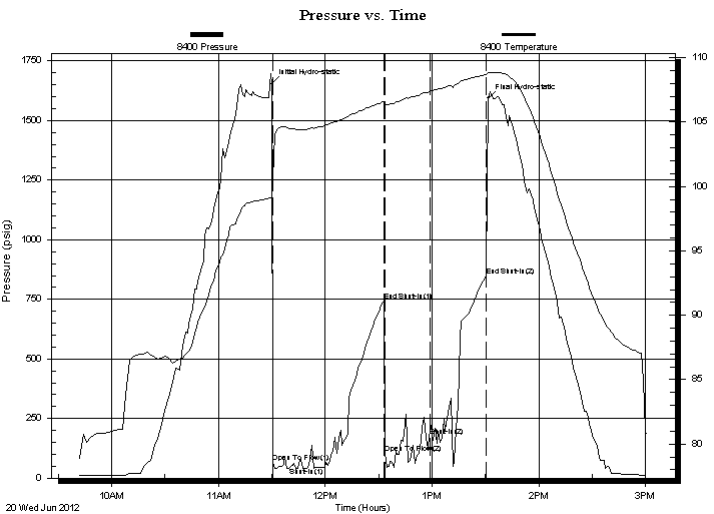
18-19s-11w
Robl Farms #1
 Job Ticket: 17689 **DST#: 7**
 Test Start: 2012.06.20 @ 09:41:00

GENERAL INFORMATION:

Formation: **Arbuckle**
 Deviated: No Whipstock: ft (KB)
 Time Tool Opened: 11:30:30
 Time Test Ended: 15:00:30
 Interval: **3379.00 ft (KB) To 3389.00 ft (KB) (TVD)**
 Total Depth: 3389.00 ft (KB) (TVD)
 Hole Diameter: 7.88 inches Hole Condition: Fair
 Test Type: Conventional Bottom Hole (Initial)
 Tester: Dustin Ellis
 Unit No: 3315-GB-30
 Reference Elevations: 1799.00 ft (KB)
 1792.00 ft (CF)
 KB to GR/CF: 7.00 ft

Serial #: 8400 Inside
 Press @ RunDepth: 174.06 psig @ 3386.00 ft (KB) Capacity: 5000.00 psig
 Start Date: 2012.06.20 End Date: 2012.06.20 Last Calib.: 2012.06.20
 Start Time: 09:41:00 End Time: 15:00:30 Time On Btm: 2012.06.20 @ 11:30:00
 Time Off Btm: 2012.06.20 @ 13:31:30

TEST COMMENT: 1st Open 30 minutes Weak blow blew 1 inch into bucket.
 1st Shut in 30 minutes No blow back.
 2nd Open 30 minutes Weak surface blew 1 inch.
 2nd Shut in 30 minutes No blow back.



PRESSURE SUMMARY

Time (Min.)	Pressure (psig)	Temp (deg F)	Annotation
0	1653.58	99.17	Initial Hydro-static
1	64.98	100.61	Open To Flow (1)
30	43.79	104.72	Shut-In(1)
63	743.79	106.58	End Shut-In(1)
64	103.53	106.28	Open To Flow (2)
89	174.06	107.37	Shut-In(2)
121	846.66	108.68	End Shut-In(2)
122	1593.30	108.86	Final Hydro-static

Recovery

Length (ft)	Description	Volume (bbl)
7.00	Mud 100%	0.03

Gas Rates

	Choke (inches)	Pressure (psig)	Gas Rate (m ³ /d)



DRILL STEM TEST REPORT

RJM Company
 Po Box 256 Claflin Kansas 67525
 ATTN: Jim Musgrove

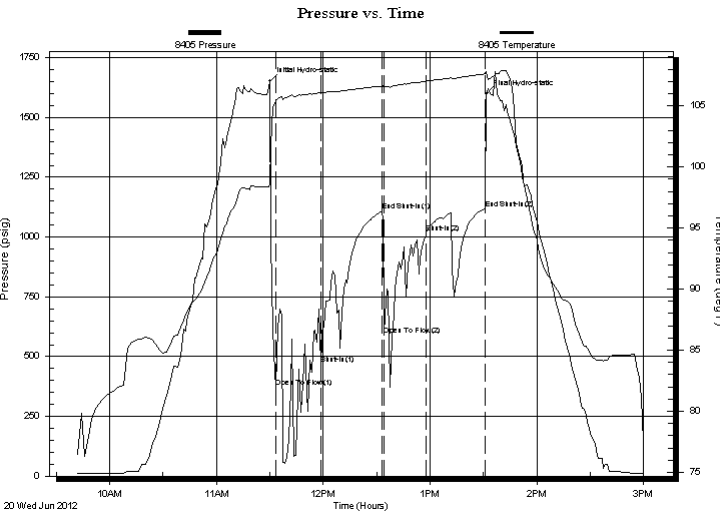
18-19s-11w
Robl Farms #1
 Job Ticket: 17689 **DST#: 7**
 Test Start: 2012.06.20 @ 09:41:00

GENERAL INFORMATION:

Formation: **Arbuckle**
 Deviated: No Whipstock: ft (KB)
 Time Tool Opened: 11:30:30
 Time Test Ended: 15:00:30
 Interval: **3379.00 ft (KB) To 3389.00 ft (KB) (TVD)**
 Total Depth: 3389.00 ft (KB) (TVD)
 Hole Diameter: 7.88 inches Hole Condition: Fair
 Test Type: Conventional Bottom Hole (Initial)
 Tester: Dustin Ellis
 Unit No: 3315-GB-30
 Reference Elevations: 1799.00 ft (KB)
 1792.00 ft (CF)
 KB to GR/CF: 7.00 ft

Serial #: 8405 Outside
 Press @ RunDepth: 1119.09 psig @ 3385.00 ft (KB) Capacity: 5000.00 psig
 Start Date: 2012.06.20 End Date: 2012.06.20 Last Calib.: 2012.06.20
 Start Time: 09:41:00 End Time: 15:01:00 Time On Btm: 2012.06.20 @ 11:30:00
 Time Off Btm: 2012.06.20 @ 13:31:30

TEST COMMENT: 1st Open 30 minutes Weak blow blew 1 inch into bucket.
 1st Shut in 30 minutes No blow back.
 2nd Open 30 minutes Weak surface blew 1 inch.
 2nd Shut in 30 minutes No blow back.



PRESSURE SUMMARY

Time (Min.)	Pressure (psig)	Temp (deg F)	Annotation
0	1651.67	98.60	Initial Hydro-static
4	371.11	105.44	Open To Flow (1)
29	467.82	106.03	Shut-In(1)
63	1107.66	106.62	End Shut-In(1)
64	589.81	106.47	Open To Flow (2)
88	1018.61	107.02	Shut-In(2)
121	1119.09	107.62	End Shut-In(2)
122	1597.52	107.77	Final Hydro-static

Recovery

Length (ft)	Description	Volume (bbl)
7.00	Mud 100%	0.03

Gas Rates

Choke (inches)	Pressure (psig)	Gas Rate (m ³ /d)



DRILL STEM TEST REPORT

TOOL DIAGRAM

RJM Company
 Po Box 256 Claflin Kansas 67525
 A T T N : Jim Musgrove

18-19s-11w
Robl Farms #1
 Job Ticket: 17689 **DST#: 7**
 Test Start: 2012.06.20 @ 09:41:00

Tool Information

Drill Pipe:	Length: 3254.00 ft	Diameter: 3.80 inches	Volume: 45.65 bbl	Tool Weight: 2000.00 lb
Heavy Wt. Pipe:	Length: 0.00 ft	Diameter: 0.00 inches	Volume: 0.00 bbl	Weight set on Packer: 20000.00 lb
Drill Collar:	Length: 118.79 ft	Diameter: 2.25 inches	Volume: 0.58 bbl	Weight to Pull Loose: 46000.00 lb
			<u>Total Volume: 46.23 bbl</u>	Tool Chased 0.00 ft
Drill Pipe Above KB:	13.79 ft			String Weight: Initial 44000.00 lb
Depth to Top Packer:	3379.00 ft			Final 44000.00 lb
Depth to Bottom Packer:	ft			
Interval between Packers:	10.00 ft			
Tool Length:	30.00 ft			
Number of Packers:	2	Diameter: 6.75 inches		

Tool Comments:

Tool Description	Length (ft)	Serial No.	Position	Depth (ft)	Accum. Lengths
Shut-In Tool	5.00			3364.00	
Hydraulic Tool	5.00			3369.00	
Packer	5.00			3374.00	20.00 Bottom Of Top Packer
Packer	5.00			3379.00	
Anchor	5.00			3384.00	
Recorder	1.00	8405	Outside	3385.00	
Recorder	1.00	8400	Inside	3386.00	
Bull Plug	3.00			3389.00	10.00 Bottom Packers & Anchor

Total Tool Length: 30.00



DRILL STEM TEST REPORT

FLUID SUMMARY

RJM Company
 Po Box 256 Claflin Kansas 67525
 ATTN: Jim Musgrove

18-19s-11w
Robl Farms #1
 Job Ticket: 17689 **DST#: 7**
 Test Start: 2012.06.20 @ 09:41:00

Mud and Cushion Information

Mud Type: Gel Chem	Cushion Type:	Oil API:	deg API
Mud Weight: 9.00 lb/gal	Cushion Length: ft	Water Salinity:	ppm
Viscosity: 48.00 sec/qt	Cushion Volume: bbl		
Water Loss: 15.20 in ³	Gas Cushion Type:		
Resistivity: ohm.m	Gas Cushion Pressure: psig		
Salinity: 18000.00 ppm			
Filter Cake: 1.00 inches			

Recovery Information

Recovery Table

Length ft	Description	Volume bbl
7.00	Mud 100%	0.034

Total Length: 7.00 ft Total Volume: 0.034 bbl
 Num Fluid Samples: 0 Num Gas Bombs: 0 Serial #:
 Laboratory Name: Laboratory Location:
 Recovery Comments:

Serial #: 8400

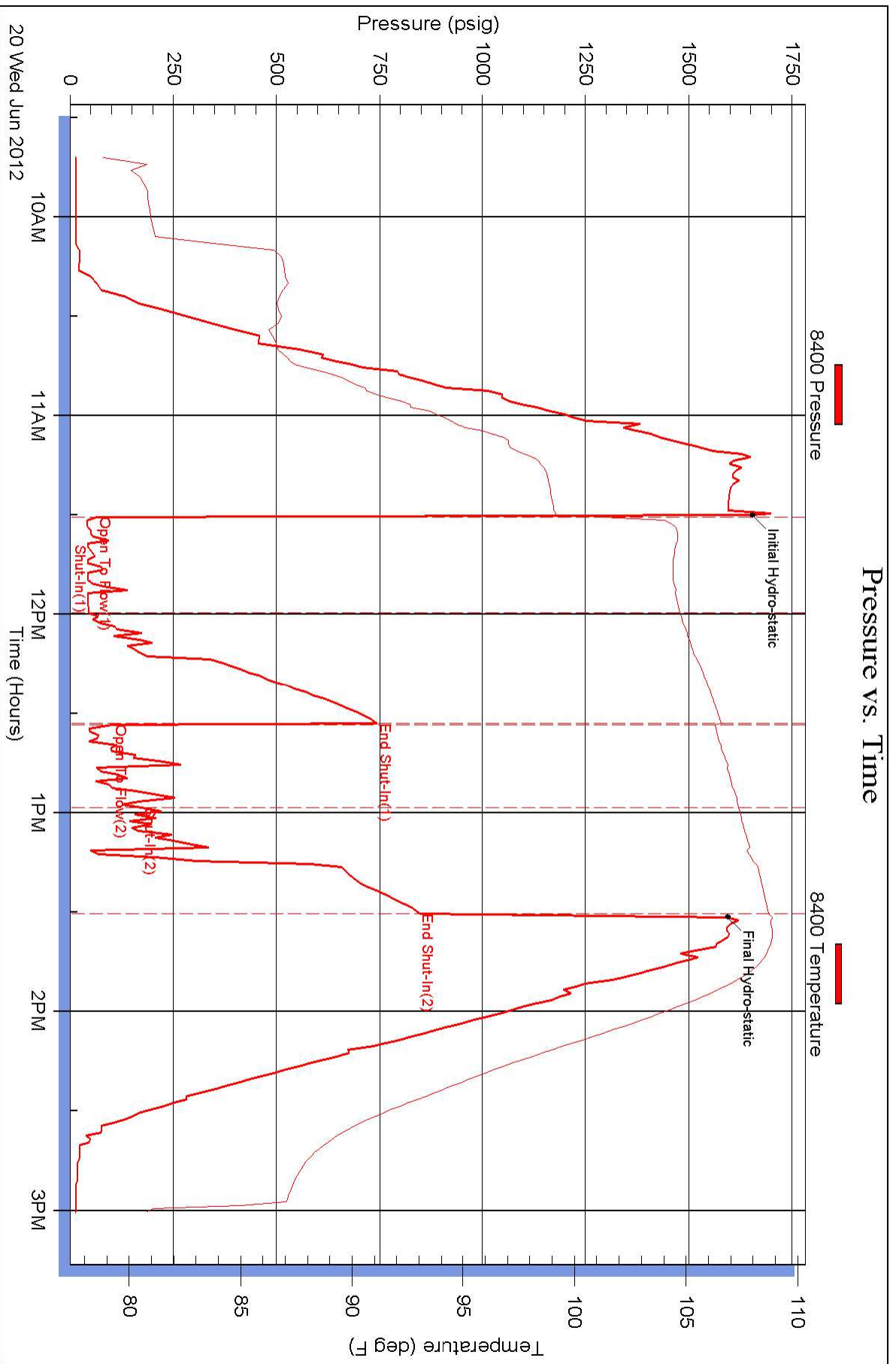
Inside

RJM Company

Robl Farms #1

DST Test Number: 7

Pressure vs. Time



Superior Testers Enterprises LLC

Ref. No: 17689

Printed: 2012.06.20 @ 13:18:36

Pressure vs. Time

