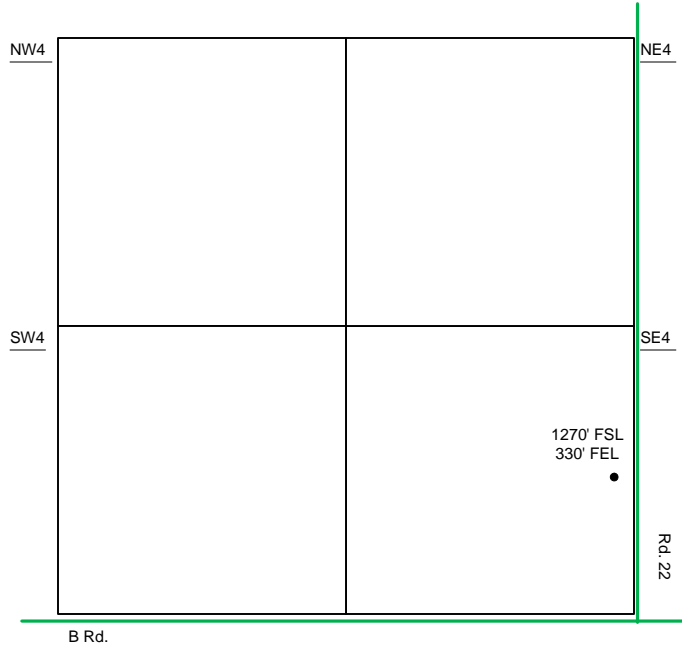


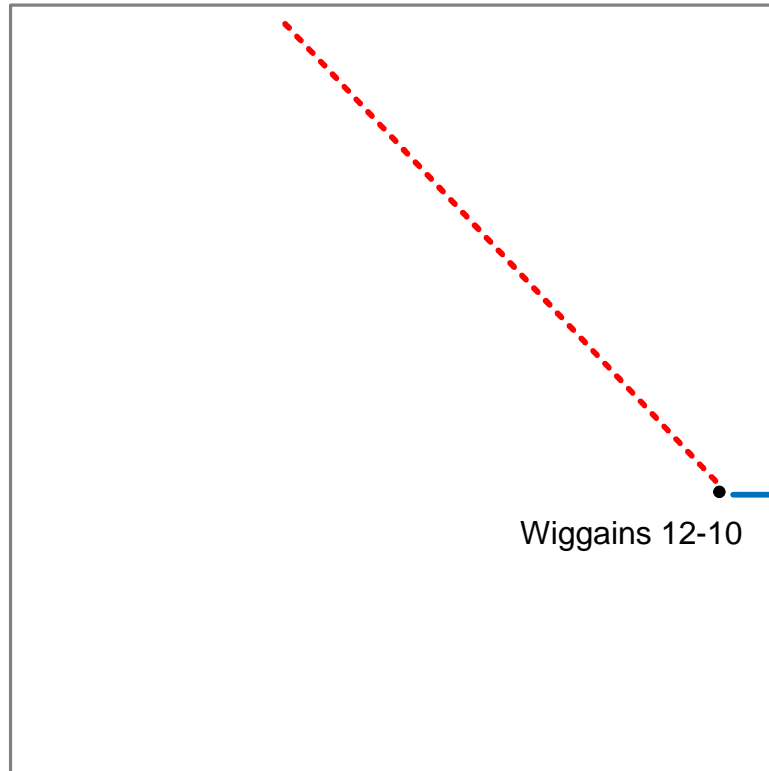
Proposed Plan of Construction
 Wiggains 12-10
 Sec 12-T35S-R36W
 Stevens County, KS



The Existing Tank Battery for the Wiggains 12-10 will be located in the NW of the NE quarter.

Sec 12 - T35S - R36W

SE/4



- Well Location
- Lease Roads
- - - Proposed Pipeline
- Tank Battery Equipment
- Power Lines
- - - Existing Pipeline

Detail of
 SE4 Sec 12-T35S-R36W

Note-Drawing **Not** to Scale

Site Diagram
 Wiggains 12-10
 August 30, 2012

